



## *Elite Series*

### Ductless Heat Pump Mini Split System

- 38 SEER / 15 HSPF Efficiency
- DC Inverter Technology
- Heat Pump and AC Operation
- Wifi included
- Self-Diagnosis
- AHRI and EnergyStar Rated
- Ultra Heat down to -22°F
- 4-Way air flow
- Multiple fan speeds
- Intelligent defrost
- Low voltage start-up
- Intelligent preheating
- Remote "I-Feel" mode
- Sleep mode
- Timer mode
- Privacy lock mode
- Turbo Mode
- Quiet Operation

## ADVANTAGE OF SINGLE ZONE CONTROL

- A ductless AC is able to distribute cold or warm air more evenly and efficiently than traditional units, resulting in a more comfortable temperature throughout the home.
- They're easy to install. Ductless installation is essentially free of hassles, doesn't require any invasive ductwork, and can be completed in just a few days. As a result, the installation is less expensive than a traditional HVAC system.

- They save money. Ductless systems are extremely efficient and have the ability to heat and cool homes at just a fraction of the cost of other heating and cooling units.
- It allows allergy sufferers to breathe easier. Ductless systems contain air purifying filters that absorb germs, pollen, dust, mildew, and odor-causing gases. In addition, they constantly circulate fresh and healthy air throughout the home.



*Indoor Unit*

*Refrigerant Lines*

*Outdoor Unit*



## ***SINGLE-ZONE APPLICATIONS***

Single zone systems can control each room with their own preference with heating or cooling.

***Living Rooms***



***Bedrooms***



***Kitchens***



***Garages***

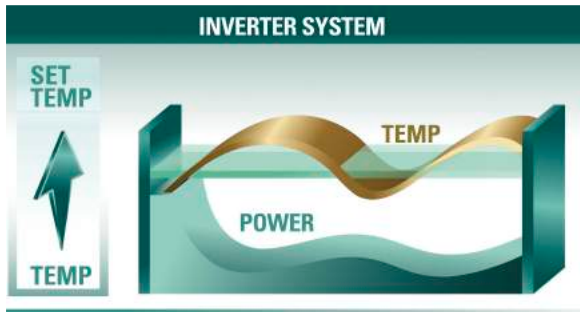
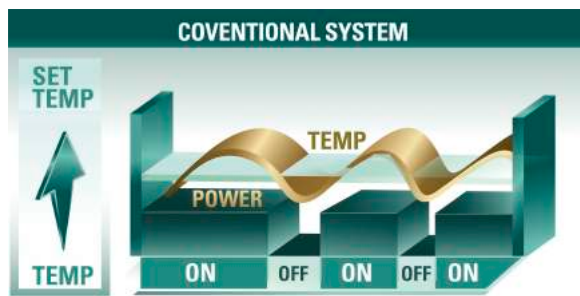


***Computer Server Rooms***



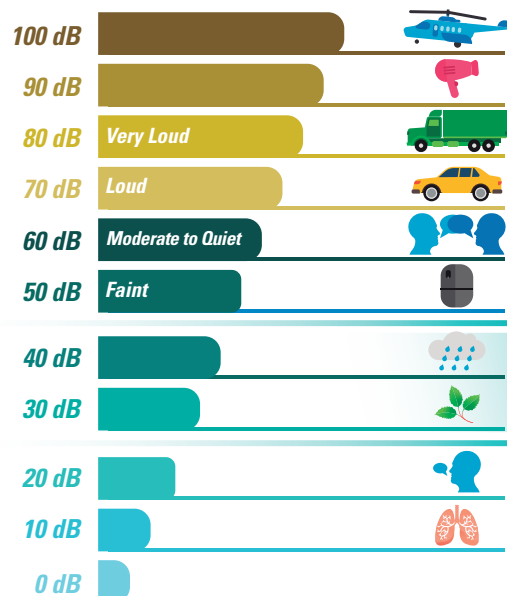
***Indoor Gardens***





## Saves up to 30% on your utility bill

Since mini-splits require no ducting, they forego those energy losses typically associated with conventional central systems. Ducts not properly sealed or unconditioned spaces such as attics, crawlspaces, or poorly insulated rooms can account for more than 30% of loss energy consumption, leading to a more expensive utility bill.



## Why go Inverter?

The key difference between an inverter and non-inverter air conditioner is that an inverter system can regulate the speed of its compressor and motor. Once the room is cool, inverter technology reduces the speed of the motor and refrigerant used to cool the area, thus saving on energy.

In comparison, non-inverter motors only runs at full speed. The motor runs at full speed and turns off once room temperature drops to the desired level. This repeated on-off process can produce unnecessary noise and consume more energy.



## A Quiet Option

With inverter technology, the indoor unit will continuously run at adjusted speeds, eliminating the loud start-up conventional air conditioning systems require.

This comfort will allow a flexible installation in areas that will not interrupt day-to-day activities with unnecessary noise pollution.

## Condenser Features

- Ultra heating capable of delivering up to 90% capacity at -22 °F
- Ultra high efficiency up to 38 SEER cooling and 15 HSPF heating
- Advanced 2-stage compressor provides faster response to reaching comfort temperatures
- Low voltage startup helps operate system from 187V to 253, adapting to unstable power suppliers
- **Saving energy by using Intelligent Defrost.** Helps monitor the frost build up on coil surface
- Self-Diagnostic built-in computer which uses real-time diagnostics which helps prolong the unit's life and alerts users with simple error codes the system may be having.



## Wall Mount Features

- 4-Way airflow allows for Vertical and Horizontal auto swing
- Ultra-Quiet operation with sound ratings as low as 19 dB(A)
- Wide angle air guides enable a full 180° swing up and down for superior air distribution
- 7 Speed fan for ultimate comfort and quiet operation
- Polymeric air filters to improve air quality by preventing dust and debris.

## Control Features

- Multi-functional wireless remote control with large LCD display
- "I FEEL" mode can sense the room temperature from the remote control, adjusting to your locations comfort
- **Wifi Access to control your system away from your system's location. Compatible with Amazon Alexa and Google Home.**
- Sleep Mode allows the unit to automatically adjust room's temperature at low sound levels
- Available displays in °F or °C





# ELITE SERIES SPECIFICATIONS

	MODEL		EIN10H2V32	EIN13H2V32	EIN18H2V32	EIN24H2V32	
SYSTEM	CAPACITY	BTU/H	9,000	12,000	18,000	24,000	
	ELECTRICAL	Volt / Hertz	208~230V / 60Hz	208~230V / 60Hz	208~230V / 60Hz	208~230V / 60Hz	
		MOCP (A)	15.0	15.0	30.0	35.0	
	COOLING	Rated Current (A)	6.2	6.5	10.8	16.4	
		SEER	38.0	30.5	24.5	21.5	
	HEATING	Rated Current (A)	6.9	6.9	10.8	16.4	
		HSPF	15.0	14.0	12.0	12.0	
	OPER. AMBIENT TEMP.	Cooling (°F )	0 °F~129°F				
		Heating (°F )	-22 °F ~ 75 °F				
	CIRCUIT BREAKER SIZE	(A)	15.0	15.0	30.0	35.0	
	MOISTURE REMOVAL	Liter/Hr	0.8	1.4	1.8	2.0	
	REFRIGERANT	R410A (oz)	55.4	49.4	70.6	62.8	
		Additional Refrigerant (oz/Ft)	0.2	0.2	0.5	0.5	
	REFRIGERANT CONNECTIONS	Liquid (in)	1/4"	1/4"	1/4"	1/4"	
		Suction (in)	1/2"	1/2"	5/8"	5/8"	
Pre-Charged Length (Ft)		25	25	25	25		
Maximum Length (Ft)		49	98	131	164		
Maximum Height (Ft)		33	49	66	98		
INDOOR UNIT	AIR FLOW	CFM	205 ~ 425	235 ~ 500	350 ~ 745	385 ~ 825	
	SOUND LEVEL	dB(A)	29 ~ 56	32 ~ 59	44 ~ 61	34 ~ 64	
	CONTROL	Remote Control Tempearture Range	LCD WIRELES REMOTE CONTROL and WIFI 61 °F ~ 86 °F				
	DIMENSIONS	Unit W x H x D (in)	38 ¼ x 11 ¾ x 9	38 ¼ x 11 ¾ x 9	43 ¼ x 12 ¾ x 9 ¾	42 ½ x 12 ¾ x 9 ¾	
	WEIGHT	Net / Gross (LBs.)	30	30	36	35	
OUTDOOR UNIT	COMPRESSOR	RLA	6.9	6.9	15.5	16.0	
		LRA	-	-	-	-	
	SOUND LEVEL	dB(A)	67	63	69	69	
	DIMENSIONS	Unit W x H x D (in)	35 ½ x 23 ½ x 14 ¾	35 ½ x 23 ½ x 14 ¾	38 ½ x 31 ¼ x 16 ¾	38 ½ x 31 ¼ x 16 ¾	
	WEIGHT	Net / Gross (LBs.)	99	99	141	147	

\*Specifications are subject to changes without notice. \*\* Model numbers, pictures, and specifications of all products are subject to change without further notice.

## ACCESSORIES INCLUDED



- 10 FT Installation Kit
- Inter-connecting cables
- Installation and User Manuals
- LCD Remote Control
- Wifi pre-installed

## Savings Comparison

38 SEER Savings vs 13 SEER	Electric Rate (\$/kWh)						
	\$0.10	\$0.15	\$0.20	\$0.25	\$0.30	\$0.35	\$0.40
<b>5 Year Savings</b>	\$414.00	\$621.00	\$829.00	\$1,036.00	\$1,243.00	\$1,450.00	\$1,657.00
<b>10 Year Savings</b>	\$772.00	\$1,158.00	\$1,543.00	\$1,929.00	\$2,315.00	\$2,701.00	\$3,087.00

\*Calculation based on 3240 hours per year of use. These values are calculated estimates and can vary due to multiple conditions

## Solar Panel Solution



\*Perfect solution for those looking to go off-grid or hybrid with solar panel installation!

\*System does not include any solar panels, conversion batteries, or any other accessories needed for solar installation. System is compatible for Solar Panel installation. Please contact a Solar expert to see if this system is compatible for you

## Innovative Ideas in Air Conditioning

