

Multipoise Crossover Air Handler

Indoor Model: **D5FUAAH48XAK**

Job Data:
 Tag #:
 Date:

Location:
 Carrier#:



INDOOR STANDARD FEATURES

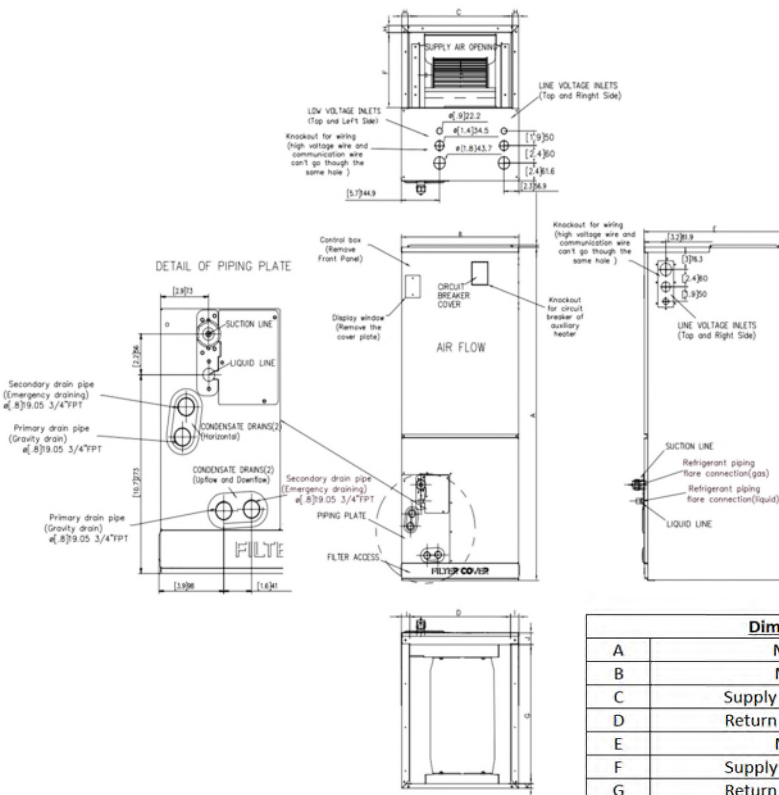
- Modes: Cool, Heat, Dry, Fan, Auto
- Factory installed leak detection system
- Conventional Lineset
- Built-in 24V Interface
- Dual Voltage (115V/230V)
- Constant Air Motor/Blower
- Quiet indoor operation
- Anti-corrosive fin coating

LIMITED WARRANTY*

- Seven (7) years compressor and five (5) years parts warranty.

NOTE: Images for illustration purposes only. Actual models may be slightly different.

| D5FUAAH48XAK | | | |
|-----------------|--|--|------------------|
| System | Indoor Model # | D5FUAAH48XAK | |
| | Indoor Size | 48000 | |
| Electrical | Voltage, Phase, Cycle | V/Ph/Hz | 115-208-230/1/60 |
| | Power Supply | Indoor unit powered separate from outdoor unit | |
| | MCA | A. | 11 |
| Piping | Pipe Connection Size - Liquid | in (mm) | 3/8 (9.52) |
| | Pipe Connection Size - Suction | in (mm) | 3/4 (19) |
| Operating Range | Cooling Indoor DB Min - Max | *F(°C) | 60~90(16~32) |
| | Heating Indoor DB Min - Max | *F(°C) | 32~86(0~30) |
| Indoor Coil | Face Area | Sq. Ft. | 4.88 |
| | No. Rows | | 5 |
| | Fins per inch | | 20 |
| | Circuits | | 14 |
| Indoor Unit | Number of Fan Speeds | | 820/720/615 |
| | Airflow (highest to lowest) | CFM | 1600.99~1094.80 |
| | Sound Pressure | dB(A) | 34 |
| Dimensions | Height | in (mm) | 52.99(1346) |
| | Width | in (mm) | 24.49(622) |
| | Depth | in (mm) | 21.02(534) |
| | Net Weight | lbs (kg) | 162.92(73.9) |
| | Shipping Height | in (mm) | 56.30(1430) |
| | Shipping Width | in (mm) | 28.15(715) |
| | Shipping Depth | in (mm) | 21.20(640) |
| | Shipping Net Weight | lbs (kg) | 190.92(86.6) |
| CONTROLS | | | |
| Standard | Wireless Remote Controller (*F/°C Convertible) | | |
| Optional | Wired Remote Control 7 Day Programmable | KSACN1401AAA | |



| Dimensions | 18K/24K | | 30K/36K | | 48K/60K | |
|--|---------|------|---------|------|---------|------|
| | inch | mm | inch | mm | inch | mm |
| A Model Height | 45 | 1143 | 49 | 1245 | 53 | 1346 |
| B Model Width | 17.5 | 445 | 21 | 534 | 24.5 | 622 |
| C Supply Air Opening Width | 15.6 | 397 | 19.1 | 486 | 22.6 | 575 |
| D Return Air Opening Width | 15.1 | 384 | 18.6 | 473 | 22.1 | 562 |
| E Model Depth | 21 | 534 | 21 | 534 | 21 | 534 |
| F Supply Air Opening Depth | 10.3 | 260 | 10.3 | 260 | 10.3 | 260 |
| G Return Air Opening Depth | 18.8 | 476 | 18.8 | 476 | 18.8 | 476 |
| H Supply Air Opening Clearance | 0.9 | 24 | 0.9 | 24 | 0.9 | 24 |
| I Return Air Opening Side Clearance | 1.3 | 32 | 1.3 | 32 | 1.1 | 28 |
| J Return Air Opening Front Clearance | 1.5 | 38 | 1.6 | 41 | 1.6 | 41 |
| K Return Air Opening Back Clearance | 0.6 | 16 | 0.6 | 16 | 0.8 | 19 |
| Refrigerant Piping Flare Connection (Gas) | 3/4 | 19 | 3/4 | 19 | 3/4 | 19 |
| Refrigerant Piping Flare Connection (Liquid) | 3/8 | 9.52 | 3/8 | 9.52 | 3/8 | 9.52 |



R-454B