

Product data sheet

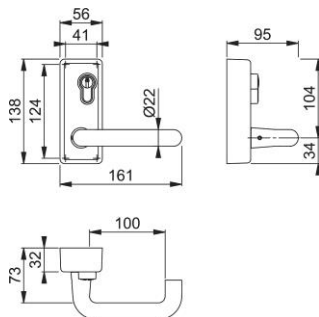
Plus

AR885L/AR886L



ARRONE lever operated outside access device:

- Function: Lever and key operation
- Body material: Zinc
- Lever material: Aluminium
- Maximum door weight: 200 kg
- Options: Device without cylinder (AR8806L)
- Testing: Included as part of both single and double door sets in accordance with the requirements of **BS EN 1125: 2008** and **BS EN 179:2008**, **BS EN 1634** Part 1: Assessed for use on 30 and 60 minute timber fire doors
- Included as an accessory on CE certificate AAA005, ABB015, UKCA certificate UK-AAA7651 and UK-ABB7654
- Included as an accessory on Certifire certificate CF810 and DoP's HUK0022, HUK0023, HUK0022-UK, HUK0023-UK



Article number	50015606
Product ref.	AR885L-SE
EAN-Code	5051358007703
Country of origin	United Kingdom
CN-Code	83024110
Spindle size	8 mm
Spindle length	
Number of pins	5
Pinning and Keying	5 pin
Material Body	zinc
Shape	Lever shape: return to door
Finish	Silver Enamel
Cylinder finish	satin nickel plated
Range	ARRONE Range
Packing unit	0
Outer carton	0