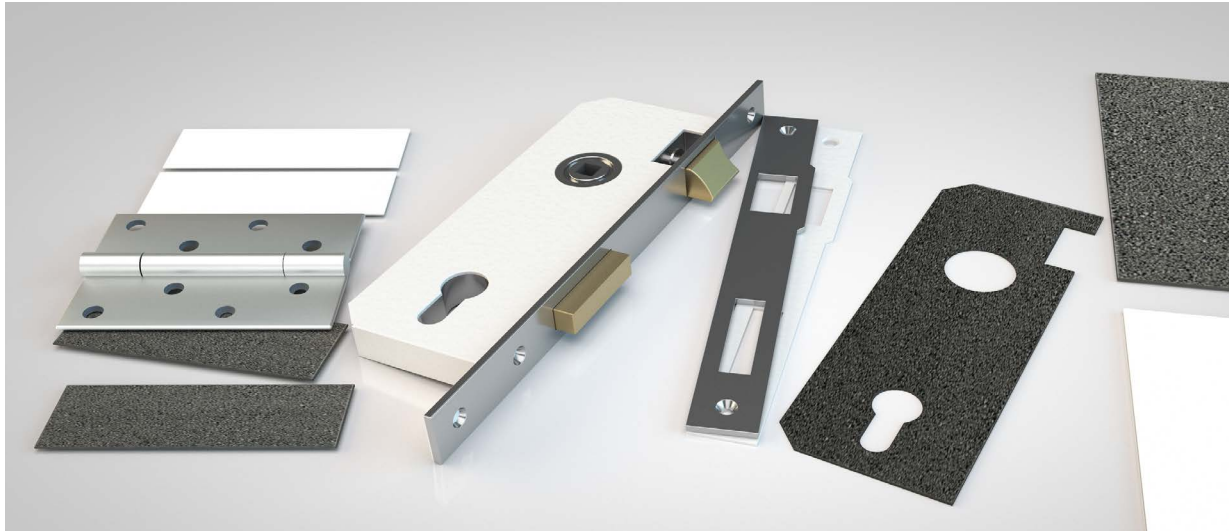


INTUMESCENT LOCK KITS

NORSEAL



Application

At lock and latch locations within fire resisting doorsets

Performance

Fire resistance in accordance with BS 476-22

GRAPHITE

Thickness (mm)

1

Colour

Dark Grey

Intumescent Lock Mask (European Sashlock)

Order code

NOR910-TH100

INTERDENS®

Thickness (mm)

1

Colour

White

Lock Mask (European Sashlock/DIN Lock)

Order code

INT(1)TH100

Lock Forend 235mm

Order code

INT(1)FEP

Flush Bolt 200mm S/A

Order code

INT(1)FL/PK-200

Lock Strike Plate 177x32mm

Order code

INT(1)SPP

AV2/3 Universal Kit for Locks and Keeps

Order code

INT(1)AV2/3KIT

Norseal can manufacture intumescent kits to all ironmongery requirements

Contact us on 01661 830088 for bespoke sizes

 5 Regents Drive
Prudhoe
Northumberland
NE42 6PX

 norseal.co.uk

 sales@norseal.co.uk

 01661 830088

Registered in Companies House Cardiff No. 04317595 VAT Reg. No. 733 9466 08