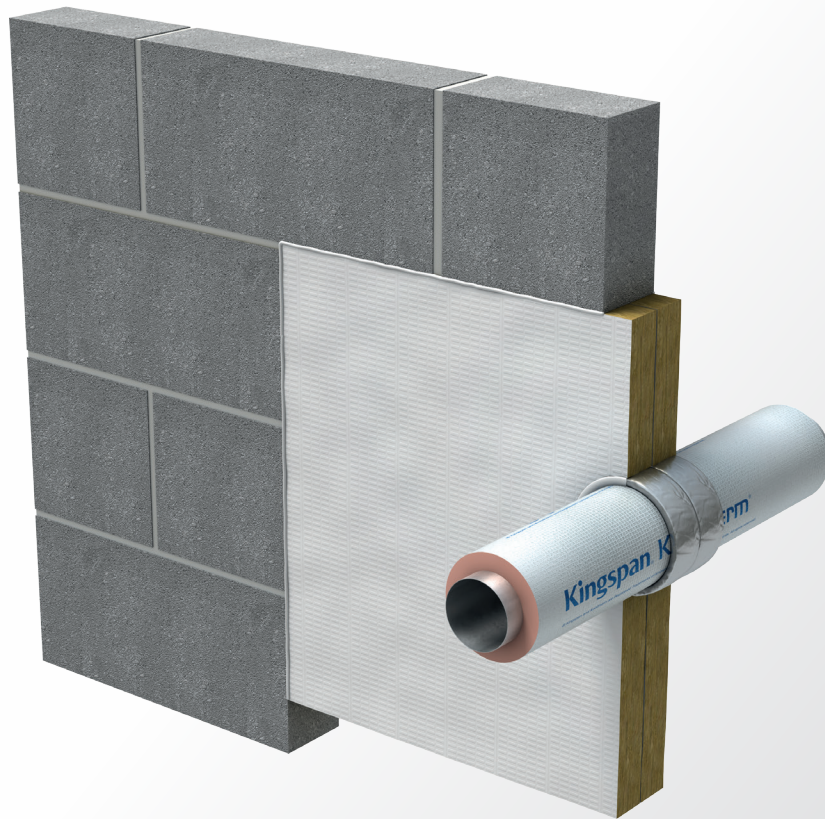


Technical Insulation

Passive Fire Protection
Great Britain & Ireland

Kooltherm[®] Pipe Insulation and K-Stop[®] Fire Stopping Solutions

Installation Guide



Contents

	Page
Walls	4
Reference Table	4 - 5
Drywalls or Rigid Walls	6 - 9
Drywalls, Masonry or Concrete Walls	10 - 12
Timber Walls	13 - 15
Floors	16
Reference Table	16 - 17
Rigid Floors	18 - 23
Timber Floors	24

Kooltherm® Pipe Insulation and K-Stop® Fire Stopping Solutions

Summary

Kingspan Kooltherm® Pipe Insulation can be used in various wall and floor applications as a fire stopping solution when installed in conjunction with Kingspan K-Stop® passive fire protection products.

This brochure provides an overview of the applications where a Kooltherm® Pipe Insulation and K-Stop® product solution is available. For further detailed information please contact the technical services team on technical.pfp@kingspan.com.

Walls

Substrate material and thickness	Pipe details	Kooltherm® insulation thickness	K-Stop® product solution	Fire resistance rating achieved	Figure reference
≥ 75 mm Drywalls or Rigid Walls	Steel pipes ≤ Ø 273 mm	25 – 100 mm	Kingspan K-Stop® Coated Batt and Kingspan K-Stop® Pipe Wrap	EI 60 C/U (E 60)	W1
≥ 100 mm Drywalls or Rigid Walls	Steel pipes ≤ Ø 16 mm	15 mm	Kingspan K-Stop® Coated Batt and Kingspan K-Stop® Pipe Wrap	EI 90 C/U (E 90)	W2
≥ 100 mm Drywalls or Rigid Walls	Steel pipes ≤ Ø 273 mm	25 – 100 mm	Kingspan K-Stop® Coated Batt and Kingspan K-Stop® Pipe Wrap	EI 90 C/U (E 90)	W3
≥ 100 mm Drywalls or Rigid Walls	Steel pipes ≤ Ø 273 mm	25 – 100 mm	Kingspan K-Stop® Coated Batt (Pattress detail) and Kingspan K-Stop® Pipe Wrap	EI 90 C/U (E 90)	W4
≥ 75 mm Drywalls or Rigid Walls	Copper pipes ≤ Ø 159 mm	15 – 100 mm	Kingspan K-Stop® Coated Batt and Kingspan K-Stop® Pipe Wrap	EI 30 C/C (E 60)	W5
≥ 100 mm Drywalls or Rigid Walls	Copper pipes ≤ Ø 15 mm	15 mm	Kingspan K-Stop® Coated Batt and Kingspan K-Stop® Pipe Wrap	EI 90 C/C (E 120)	W6
≥ 100 mm Drywalls or Rigid Walls	Copper pipes ≤ Ø 159 mm	15 mm	Kingspan K-Stop® Coated Batt and Kingspan K-Stop® Pipe Wrap	EI 30 C/C (E 120)	W7
≥ 100 mm Drywalls or Rigid Walls	Copper pipes ≤ Ø 159 mm	16 – 99 mm	Kingspan K-Stop® Coated Batt and Kingspan K-Stop® Pipe Wrap	EI 30 C/C (E 60)	W8
≥ 100 mm Drywalls or Rigid Walls	Copper pipes ≤ Ø 159 mm	100 mm	Kingspan K-Stop® Coated Batt and Kingspan K-Stop® Pipe Wrap	EI 60 C/C (E 60)	W9
≥ 100 mm Drywalls or Rigid Walls	Copper pipes ≤ Ø 159 mm	100 mm	Kingspan K-Stop® Coated Batt (Pattress detail) and Kingspan K-Stop® Pipe Wrap	EI 60 C/C (E 60)	W10
≥ 75 mm Drywalls or Rigid Walls	Metal pipes with no minimum distance in-between	Various (See detail)	Kingspan K-Stop® Coated Batt and Kingspan K-Stop® Pressure Exerting Graphite Mastic	EI 60	W11
≥ 100 mm Drywalls or Rigid Walls	Metal pipes with no minimum distance in-between	Various (See detail)	Kingspan K-Stop® Coated Batt and Kingspan K-Stop® Pressure Exerting Graphite Mastic	EI 60-120	W12
≥ 100 mm Drywalls or Rigid Walls	Metal pipes with no minimum distance in-between	Various (See detail)	Kingspan K-Stop® Coated Batt (Pattress detail) and Kingspan K-Stop® Pressure Exerting Graphite Mastic	EI 60-120	W13
≥ 100 mm Drywalls, Masonry or Concrete Walls	Steel pipes ≤ Ø 16 mm	15 mm	Kingspan K-Stop® Intumescent Mastic Plus	EI 90 C/U (E 90)	W14
≥ 100 mm Drywalls, Masonry or Concrete Walls	Steel pipes ≤ Ø 273 mm	25 mm	Kingspan K-Stop® Intumescent Mastic Plus	EI 60 C/U (E 90)	W15
≥ 100 mm Drywalls, Masonry or Concrete Walls	Steel pipes ≤ Ø 273 mm	26 – 100 mm	Kingspan K-Stop® Intumescent Mastic Plus	EI 60 C/U (E 60)	W16
≥ 100 mm Drywalls, Masonry or Concrete Walls	Copper pipes ≤ Ø 54 mm	15 mm	Kingspan K-Stop® Intumescent Mastic Plus	EI 60 C/C (E 120)	W17
≥ 100 mm Drywalls, Masonry or Concrete Walls	Copper pipes ≤ Ø 54 mm	16 – 30 mm	Kingspan K-Stop® Intumescent Mastic Plus	EI 60 C/C (E 90)	W18
≥ 100 mm Drywalls, Masonry or Concrete Walls	Copper pipes ≤ Ø 159 mm	15 – 100 mm	Kingspan K-Stop® Intumescent Mastic Plus	EI 30 C/C (E 45)	W19
≥ 100 mm Drywalls, Masonry or Concrete Walls	Copper pipes ≤ Ø 159 mm	100 mm	Kingspan K-Stop® Intumescent Mastic Plus and Kingspan K-Stop® Pipe Wrap	EI 60 C/C (E 60)	W20

Table 1: Reference table for Kooltherm® Pipe Insulation and K-Stop® passive fire protection products in walls.

Walls

Substrate material and thickness	Pipe details	Kooltherm® insulation thickness	K-Stop® product solution	Fire resistance rating achieved	Figure reference
≥ 100 mm Drywalls, Masonry or Concrete Walls	Copper or steel pipes ≤ Ø 12 mm	15 mm	Kingspan K-Stop® Pipe Collar	EI 120 C/C (E 120)	W21
≥ 100 mm Drywalls, Masonry or Concrete Walls	Copper or steel pipes ≤ Ø 108 mm	25 mm	Kingspan K-Stop® Pipe Collar	EI 90 C/C (E 120)	W22
≥ 100 mm Drywalls, Masonry or Concrete Walls	Copper or steel pipes ≤ Ø 108 mm	26 – 100 mm	Kingspan K-Stop® Pipe Collar	EI 60 C/C (E 60)	W23
≥ 100 mm Drywalls, Masonry or Concrete Walls	Copper or steel pipes ≤ Ø 108 mm	26 – 100 mm	Kingspan K-Stop® Intumescent Mastic Plus and Kingspan K-Stop® Pipe Collar	EI 60 C/C (E 60)	W24
≥ 100 mm Drywalls, Masonry or Concrete Walls	Copper or steel pipes ≤ Ø 159 mm	25 mm	Kingspan K-Stop® Pipe Collar	EI 60 C/C (E 60)	W25
≥ 100 mm Drywalls, Masonry or Concrete Walls	Copper or steel pipes ≤ Ø 159 mm	25 mm	Kingspan K-Stop® Intumescent Mastic Plus and Kingspan K-Stop® Pipe Collar	EI 60 C/C (E 60)	W26
≥ 100 mm Drywalls, Masonry or Concrete Walls	Copper or steel pipes ≤ Ø 159 mm	26 – 100 mm	Kingspan K-Stop® Pipe Collar	EI 45 C/C (E 45)	W27
≥ 100 mm Drywalls, Masonry or Concrete Walls	Copper or steel pipes ≤ Ø 159 mm	26 – 100 mm	Kingspan K-Stop® Intumescent Mastic Plus and Kingspan K-Stop® Pipe Collar	EI 45 C/C (E 45)	W28
≥ 100 mm Timber Wall	Steel pipes ≤ Ø 16 mm	15 mm	Kingspan K-Stop® Coated Batt (Pattress detail) and Kingspan K-Stop® Pipe Wrap	EI 90 C/U (E 90)	W29
≥ 100 mm Timber Wall	Steel pipes ≤ Ø 273 mm	25 – 100 mm	Kingspan K-Stop® Coated Batt (Pattress detail) and Kingspan K-Stop® Pipe Wrap	EI 90 C/U (E 90)	W30
≥ 100 mm Timber Wall	Copper pipes ≤ Ø 15 mm	15 mm	Kingspan K-Stop® Coated Batt (Pattress detail) and Kingspan K-Stop® Pipe Wrap	EI 90 C/C (E 120)	W31
≥ 100 mm Timber Wall	Copper pipes ≤ Ø 159 mm	15 mm	Kingspan K-Stop® Coated Batt (Pattress detail) and Kingspan K-Stop® Pipe Wrap	EI 30 C/C (E 120)	W32
≥ 100 mm Timber Wall	Copper pipes ≤ Ø 159 mm	16 - 99 mm	Kingspan K-Stop® Coated Batt (Pattress detail) and Kingspan K-Stop® Pipe Wrap	EI 30 C/C (E 60)	W33
≥ 100 mm Timber Wall	Copper pipes ≤ Ø 159 mm	100 mm	Kingspan K-Stop® Coated Batt (Pattress detail) and Kingspan K-Stop® Pipe Wrap	EI 60 C/C (E 60)	W34
≥ 100 mm Timber Wall	Metal pipes with no minimum distance in-between	Various (See detail)	Kingspan K-Stop® Coated Batt and Kingspan K-Stop® Pressure Exerting Graphite Mastic	EI 60-120	W35
≥ 100 mm Timber Wall	Copper or steel pipes ≤ Ø 12 mm	15 mm	Kingspan K-Stop® Intumescent Mastic Plus and Kingspan K-Stop® Pipe Collar and stone wool backing	EI 90 C/C (E 90)	W36
≥ 100 mm Timber Wall	Copper or steel pipes ≤ Ø 108 mm	25 – 100 mm	Kingspan K-Stop® Intumescent Mastic Plus and Kingspan K-Stop® Pipe Collar and stone wool backing	EI 60 C/C (E 60)	W37
≥ 100 mm Timber Wall	Copper or steel pipes ≤ Ø 108 mm	25 mm	Kingspan K-Stop® Intumescent Mastic Plus and Kingspan K-Stop® Pipe Collar and stone wool backing	EI 90 C/C (E 90)	W38
≥ 100 mm Timber Wall	Copper or steel pipes ≤ Ø 159 mm	25 mm	Kingspan K-Stop® Intumescent Mastic Plus and Kingspan K-Stop® Pipe Collar and stone wool backing	EI 60 C/C (E 60)	W39
≥ 100 mm Timber Wall	Copper or steel pipes ≤ Ø 159 mm	26 – 100 mm	Kingspan K-Stop® Intumescent Mastic Plus and Kingspan K-Stop® Pipe Collar and stone wool backing	EI 45 C/C (E 45)	W40

Table 1: Reference table for Kooltherm® Pipe Insulation and K-Stop® passive fire protection products in walls.

Drywalls or Rigid Walls

Figure W1: Insulated Steel Pipes Fire Resistance EI 60 C/U (E 60)

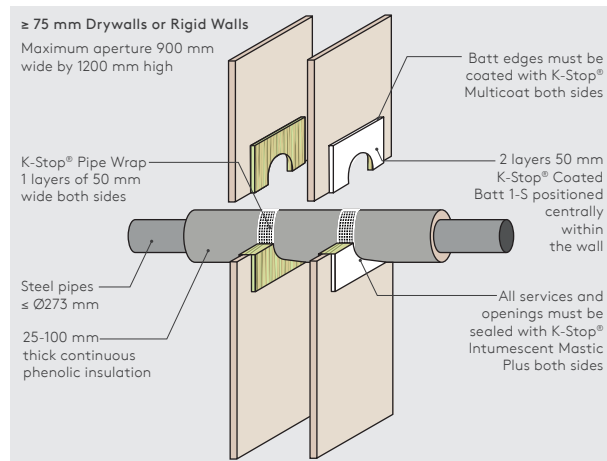


Figure W2: Insulated Steel Pipes Fire Resistance EI 90 C/U (E 90)

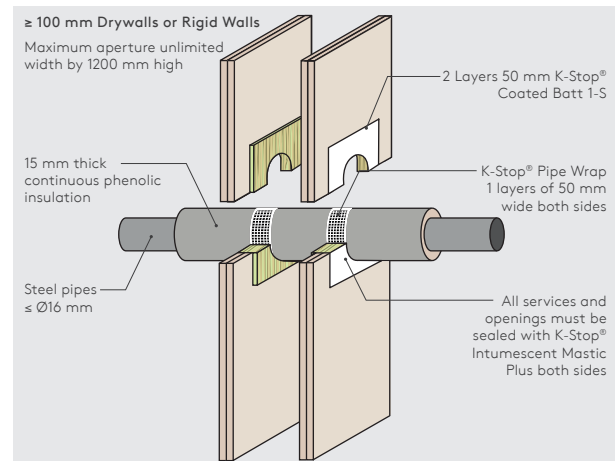


Figure W3: Insulated Steel Pipes Fire Resistance EI 90 C/U (E 90)

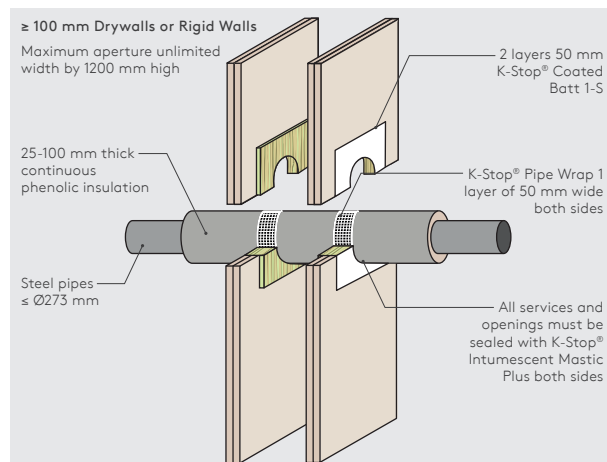


Figure W4: Insulated Steel Pipes Fire Resistance EI 90 C/U (E 90)

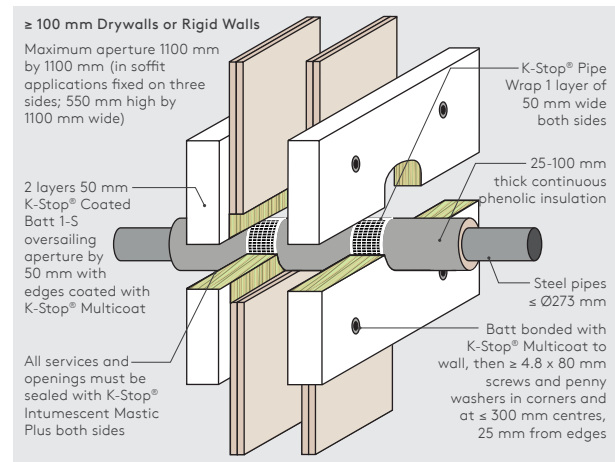


Figure W5: Insulated Copper Pipes Fire Resistance EI 30 C/C (E 60)

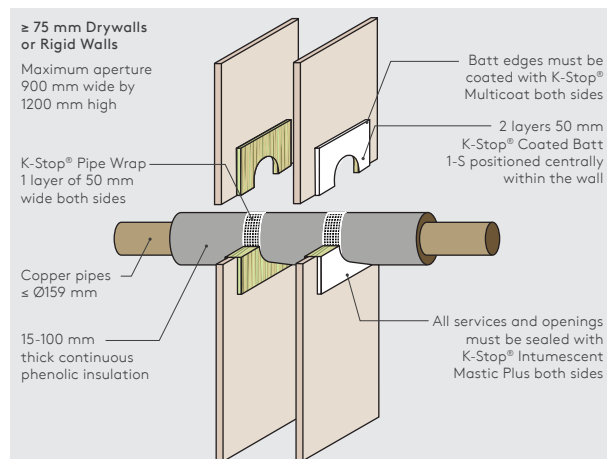
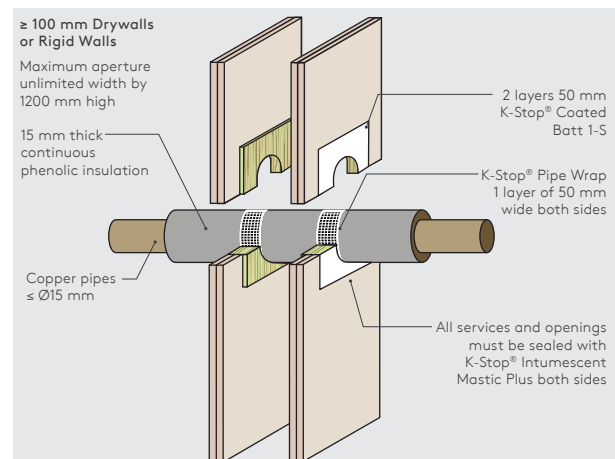


Figure W6: Insulated Copper Pipes Fire Resistance EI 90 C/C (E 120)



Drywalls or Rigid Walls

Figure W7: Insulated Copper Pipes Fire Resistance EI 30 C/C (E 120)

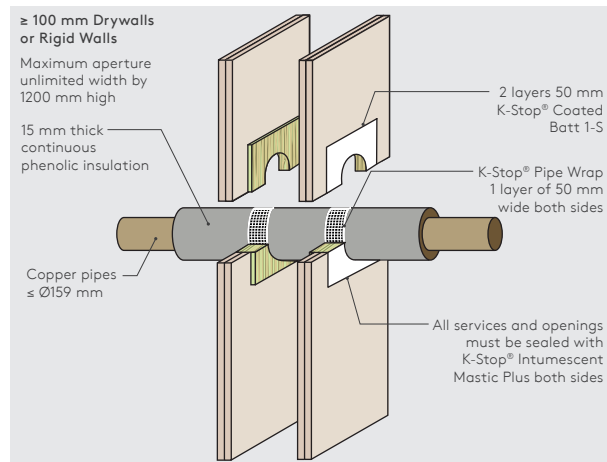


Figure W8: Insulated Copper Pipes Fire Resistance EI 30 C/C (E 60)

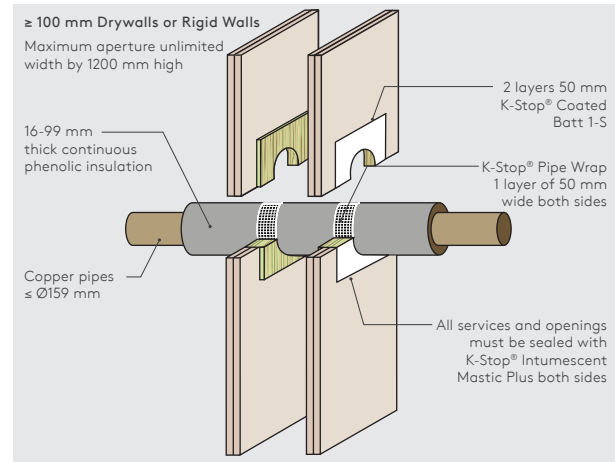


Figure W9: Insulated Copper Pipes Fire Resistance EI 60 C/C (E 60)

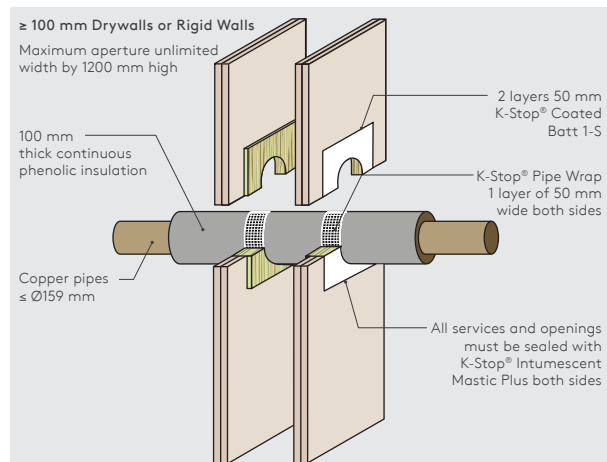
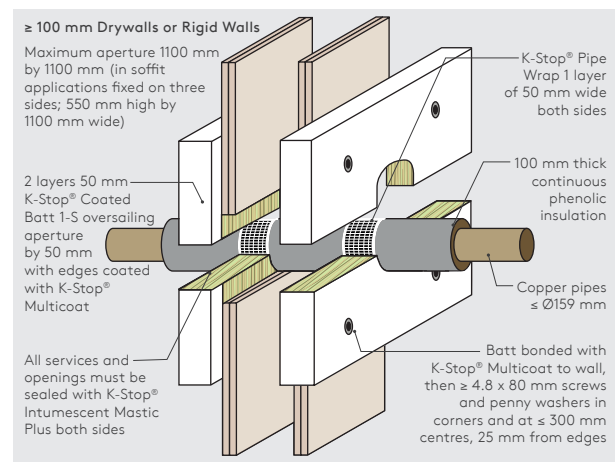
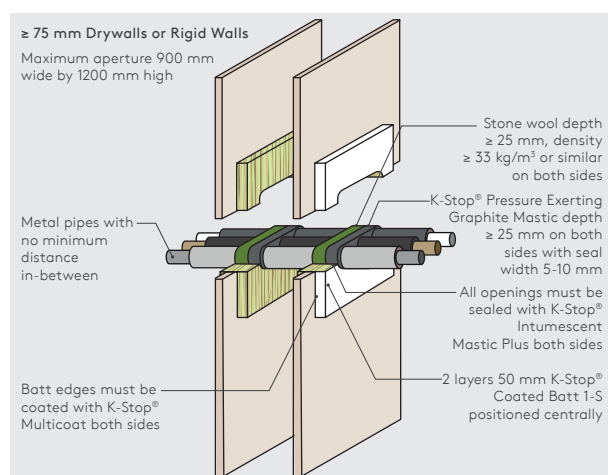


Figure W10: Insulated Copper Pipes Fire Resistance EI 60 C/C (E 60)



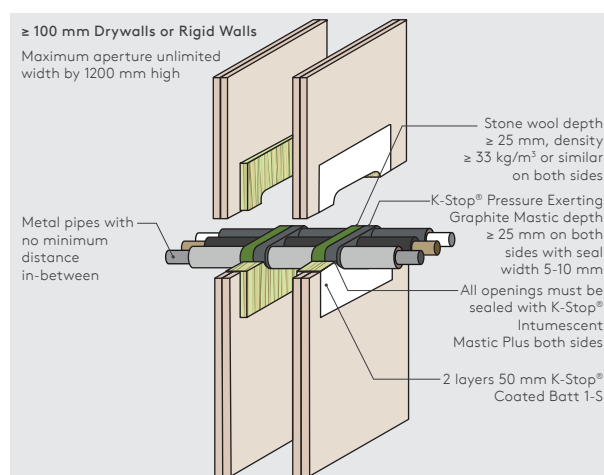
Drywalls or Rigid Walls

Figure W11: Insulated Metal Pipes with K-Stop® Pressure Exerting Graphite Mastic Fire Resistance EI 60



Services	Pipe Insulation	Classification
Ø6 mm Steel or Copper Pipes	9 mm elastomeric insulation class ≥ B-s3, d0	EI 60 C/C (E 60 C/C)
≤ Ø18 mm Steel or Copper Pipes	9 mm elastomeric insulation class ≥ B-s3, d0	EI 60 C/C (E 60 C/C)
≤ Ø54 mm Steel or Copper Pipes	19 mm elastomeric insulation class ≥ B-s3, d0	EI 60 C/C (E 60 C/C)
≤ Ø54 mm Steel or Copper Pipes	25 mm thick phenolic insulation	EI 60 C/C (E 60 C/C)
Ø14 mm Alupex Pipes	6 mm PE foam insulation	EI 60 C/C (E 60 C/C)

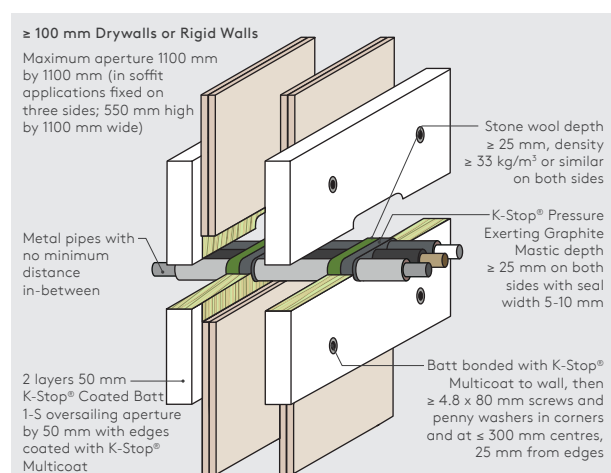
Figure W12: Insulated Metal Pipes with K-Stop® Pressure Exerting Graphite Mastic Fire Resistance EI 60-120



Services	Pipe Insulation	Classification
Ø6 mm Steel or Copper Pipes	9 mm elastomeric insulation class ≥ B-s3, d0	EI 120 C/C (E 120 C/C)
≤ Ø18 mm Steel or Copper Pipes	9 mm elastomeric insulation class ≥ B-s3, d0	EI 90 C/C (E 120 C/C)
≤ Ø54 mm Steel or Copper Pipes	19 mm elastomeric insulation class ≥ B-s3, d0	EI 90 C/C (E 120 C/C)
≤ Ø54 mm Steel or Copper Pipes	25 mm thick phenolic insulation	EI 60 C/C (E 120 C/C)
Ø14 mm Alupex Pipes	6 mm PE foam insulation	EI 60 C/C (E 90 C/C)

Drywalls or Rigid Walls

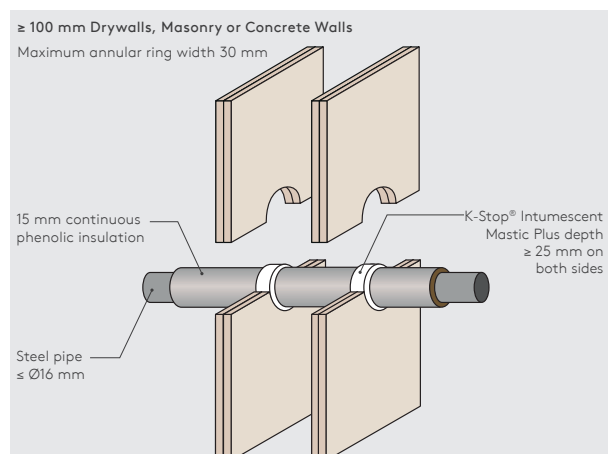
Figure W13: Insulated Metal Pipes with K-Stop® Pressure Exerting Graphite Mastic Fire Resistance EI 60-120



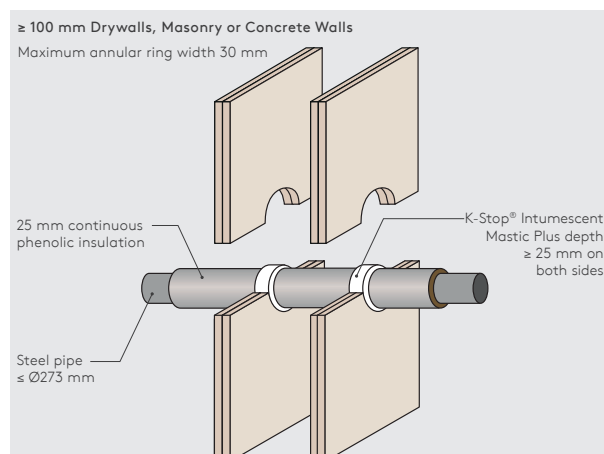
Services	Pipe Insulation	Classification
Ø6 mm Steel or Copper Pipes	9 mm elastomeric insulation class ≥ B-s3, d0	EI 120 C/C (E 120 C/C)
≤ Ø18 mm Steel or Copper Pipes	9 mm elastomeric insulation class ≥ B-s3, d0	EI 90 C/C (E 120 C/C)
≤ Ø54 mm Steel or Copper Pipes	19 mm elastomeric insulation class ≥ B-s3, d0	EI 90 C/C (E 120 C/C)
≤ Ø54 mm Steel or Copper Pipes	25 mm thick phenolic insulation	EI 60 C/C (E 120 C/C)
Ø14 mm Alupex Pipes	6 mm PE foam insulation	EI 60 C/C (E 90 C/C)

Drywalls, Masonry or Concrete Walls

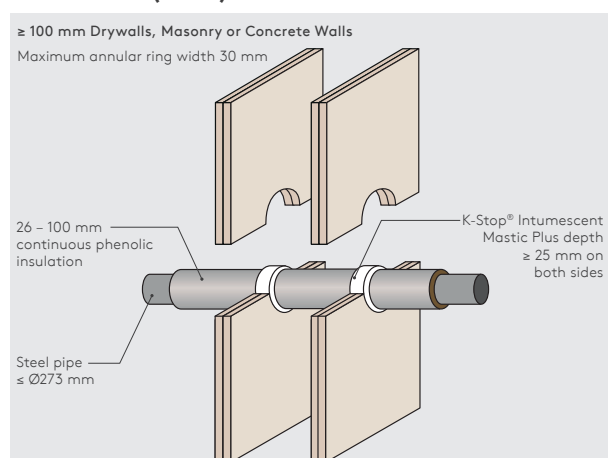
**Figure W14: Steel Pipe Fire Resistance
EI 90 C/U (E 90)**



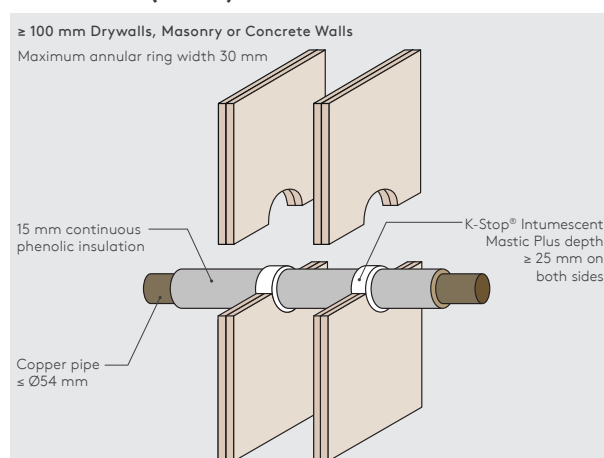
**Figure W15: Steel Pipe Fire Resistance
EI 60 C/U (E 90)**



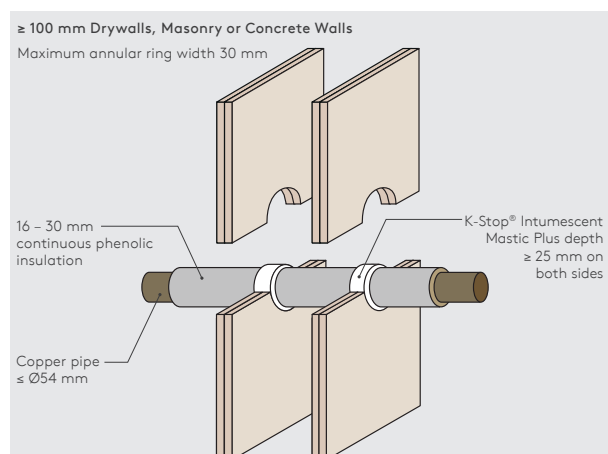
**Figure W16: Steel Pipe Fire Resistance
EI 60 C/U (E 60)**



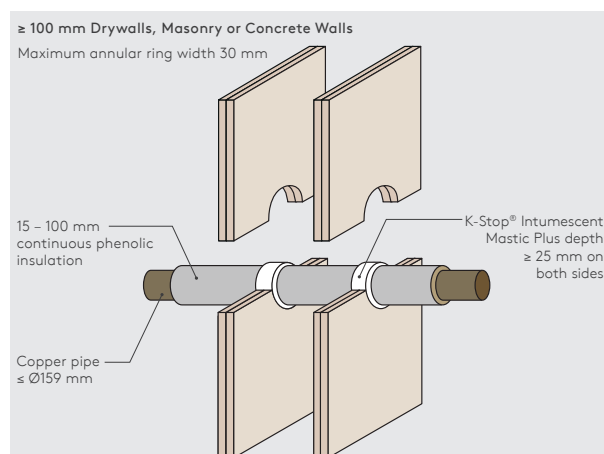
**Figure W17: Copper Pipe Fire Resistance
EI 60 C/C (E 120)**



**Figure W18: Copper Pipe Fire Resistance
EI 60 C/C (E 90)**



**Figure W19: Copper Pipe Fire Resistance
EI 30 C/C (E 45)**



Drywalls, Masonry or Concrete Walls

Figure W20: Copper Pipe Fire Resistance EI 60 C/C (E 60)

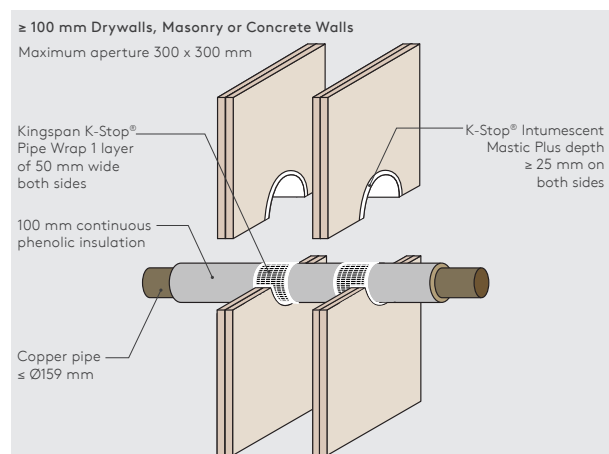


Figure W21: Copper or Steel Pipe Fire Resistance EI 120 C/C (E 120)

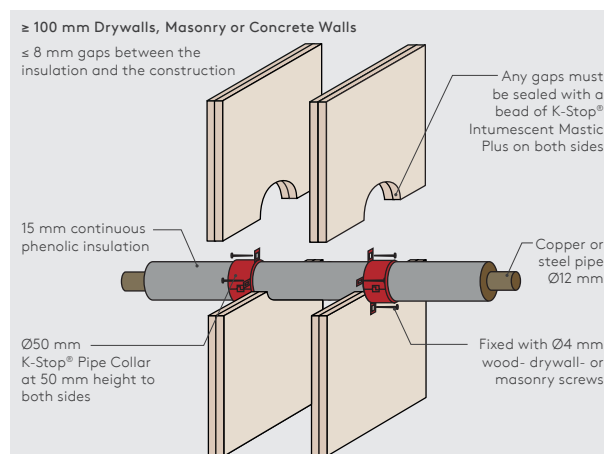


Figure W22: Copper or Steel Pipe Fire Resistance EI 90 C/C (E 120)

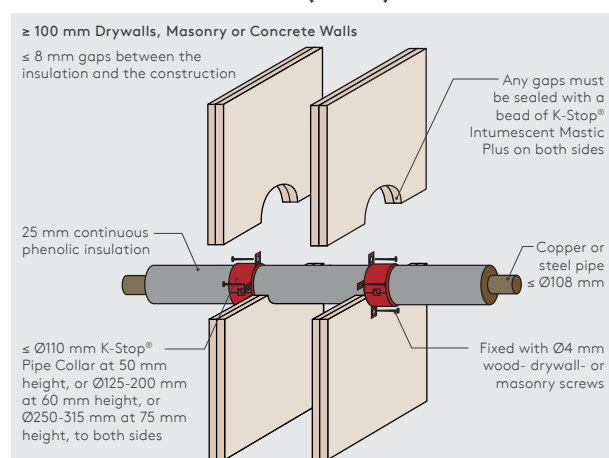


Figure W23: Copper or Steel Pipe Fire Resistance EI 60 C/C (E 60)

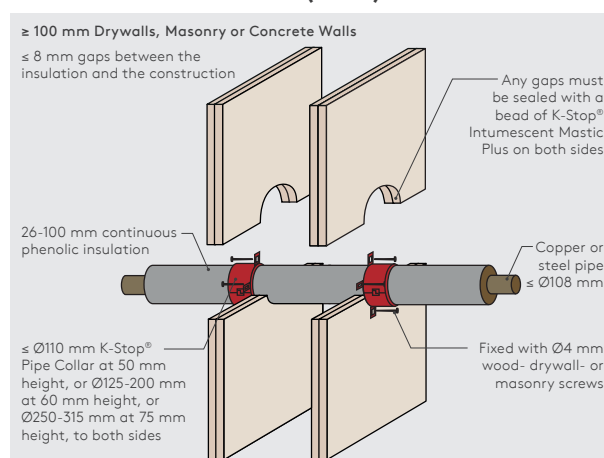


Figure W24: Copper or Steel Pipe Fire Resistance EI 60 C/C (E 60)

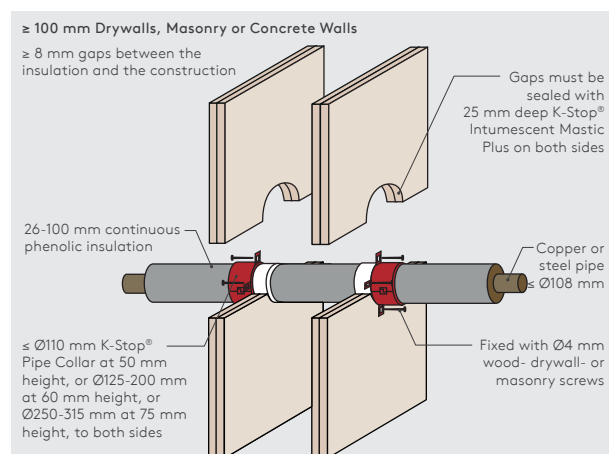
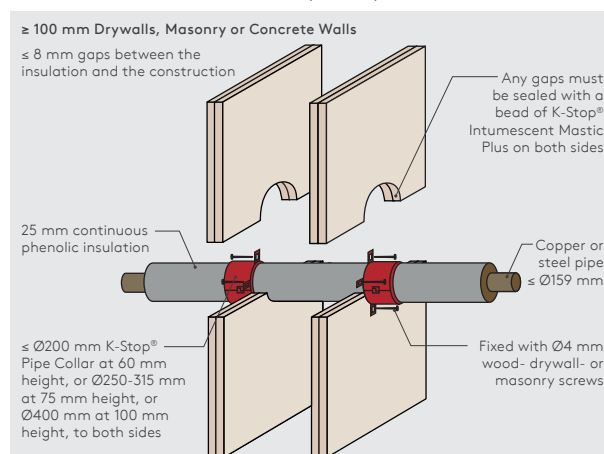


Figure W25: Copper or Steel Pipe Fire Resistance EI 60 C/C (E 60)



Drywalls, Masonry or Concrete Walls

Figure W26: Copper or Steel Pipe Fire Resistance EI 60 C/C (E 60)

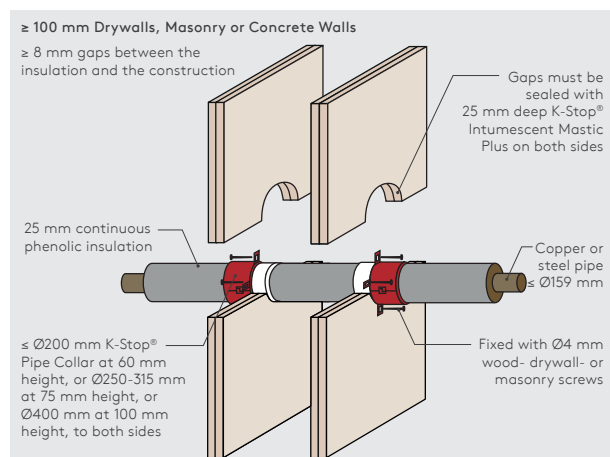


Figure W27: Copper or Steel Pipe Fire Resistance EI 45 C/C (E 45)

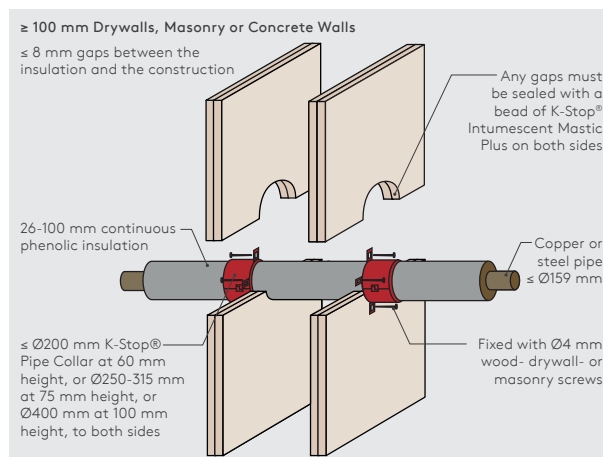
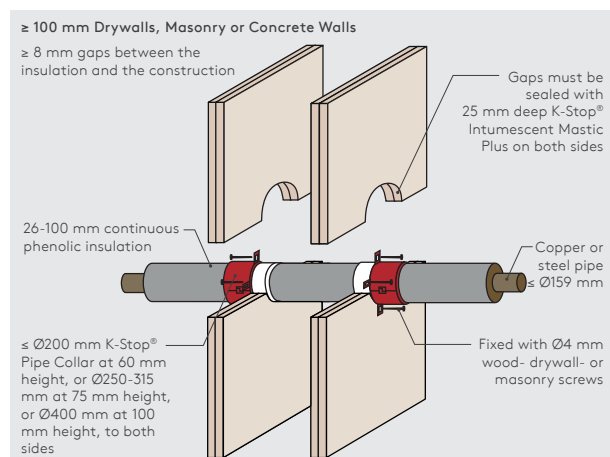


Figure W28: Copper or Steel Pipe Fire Resistance EI 45 C/C (E 45)



Timber Walls

Figure W29: Insulated Steel Pipes Fire Resistance EI 90 C/U (E 90)

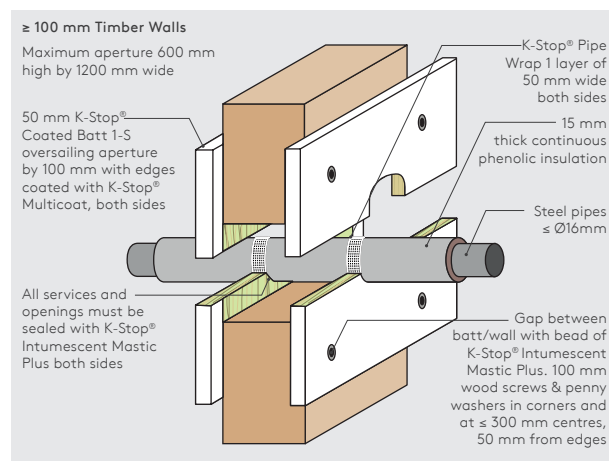


Figure W30: Insulated Steel Pipes Fire Resistance EI 90 C/U (E 90)

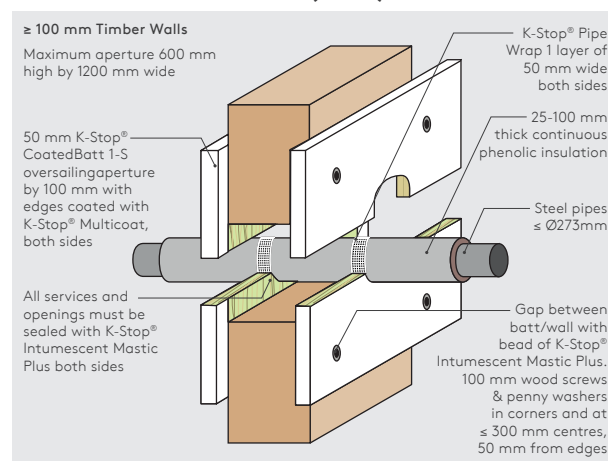


Figure W31: Insulated Copper Pipes Fire Resistance EI 90 C/C (E 120)

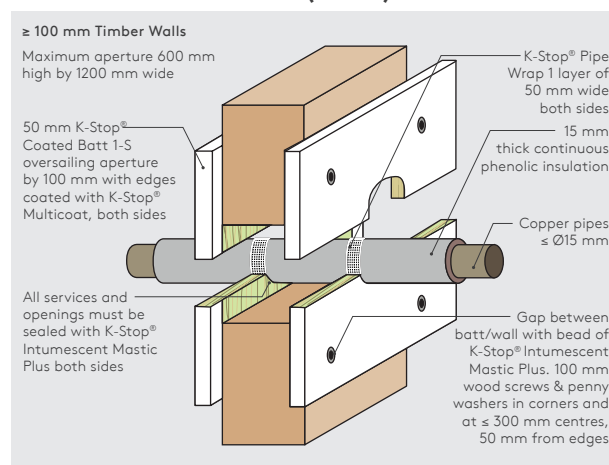


Figure W32: Insulated Copper Pipes Fire Resistance EI 30 C/C (E 120)

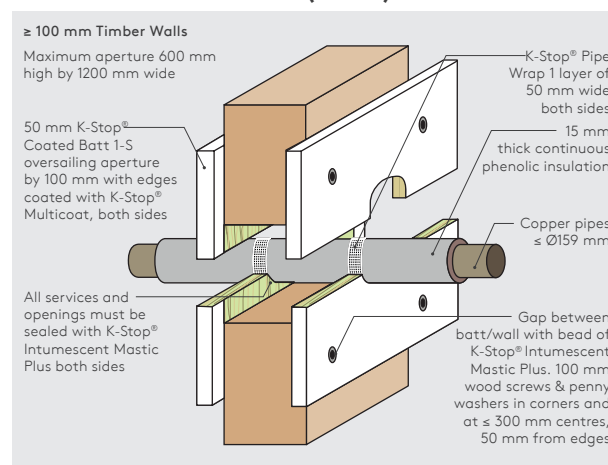


Figure W33: Insulated Copper Pipes Fire Resistance EI 30 C/C (E 60)

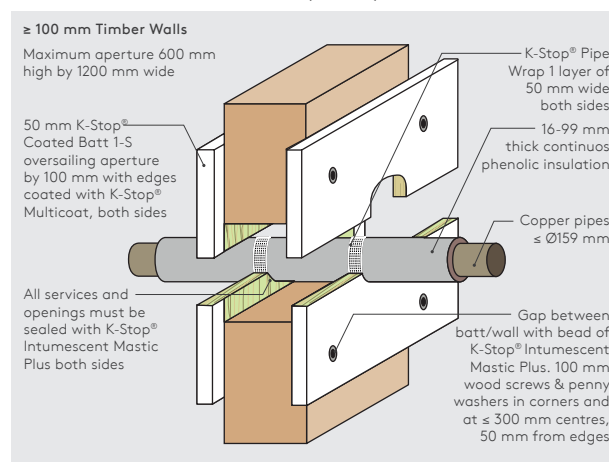
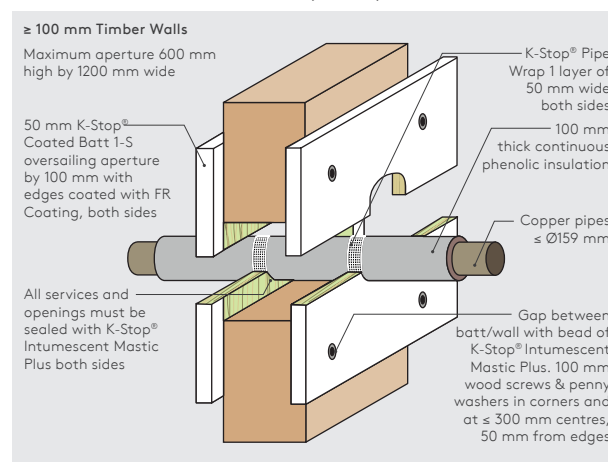
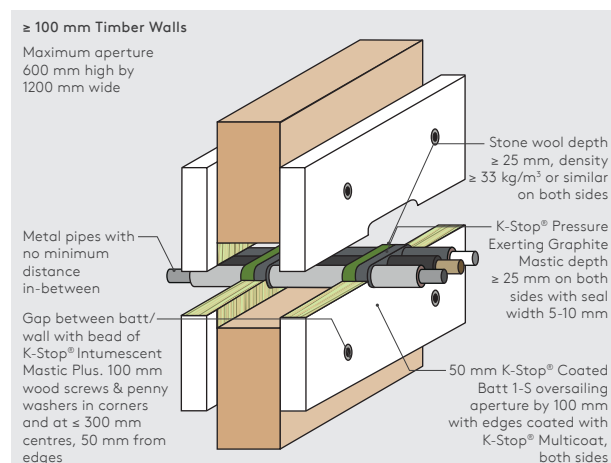
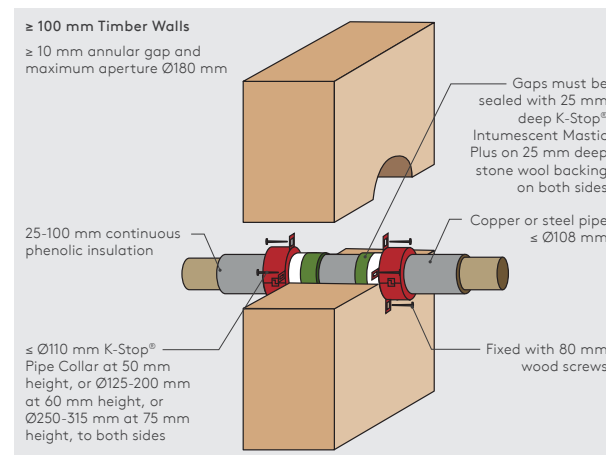
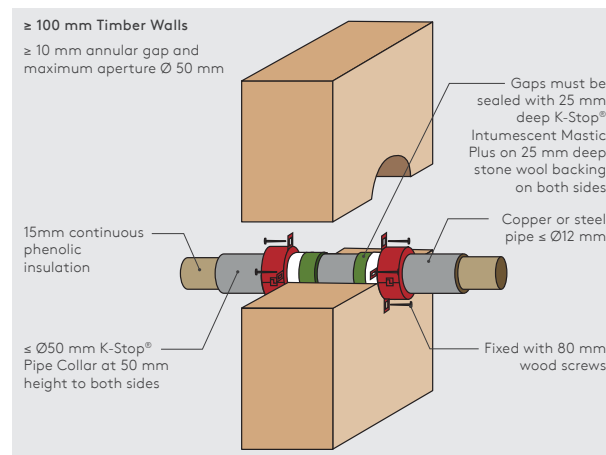


Figure W34: Insulated Copper Pipes Fire Resistance EI 60 C/C (E 60)





Services	Pipe Insulation	Classification
≤ Ø18 mm Steel or Copper Pipes	9 mm elastomeric insulation class ≥ B-s3, d0	EI 90 C/C (E 120 C/C)
Ø6 mm Steel or Copper Pipes	9 mm elastomeric insulation class ≥ B-s3, d0	EI 120 C/C (E 120 C/C)
≤ Ø54 mm Steel or Copper Pipes	19 mm elastomeric insulation class ≥ B-s3, d0	EI 90 C/C (E 120 C/C)
≤ Ø54 mm Steel or Copper Pipes	25 mm thick phenolic insulation	EI 60 C/C (E 120 C/C)
Ø14 mm Alupex Pipes	6 mm PE foam insulation	EI 60 C/C (E 90 C/C)



Timber Walls

Figure W38: Copper or Steel Pipe Fire Resistance EI 90 C/C (E 90)

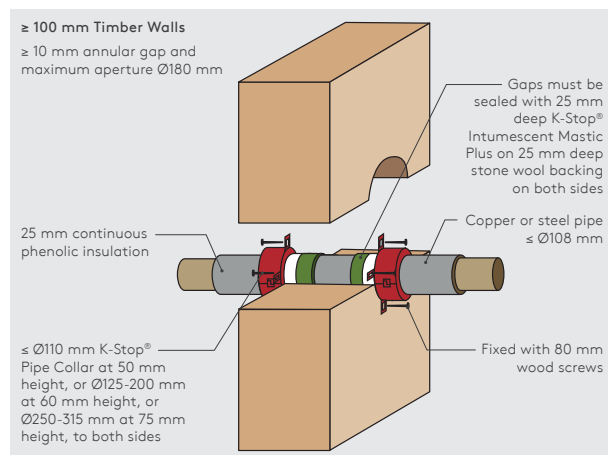


Figure W39: Copper or Steel Pipe Fire Resistance EI 60 C/C (E 60)

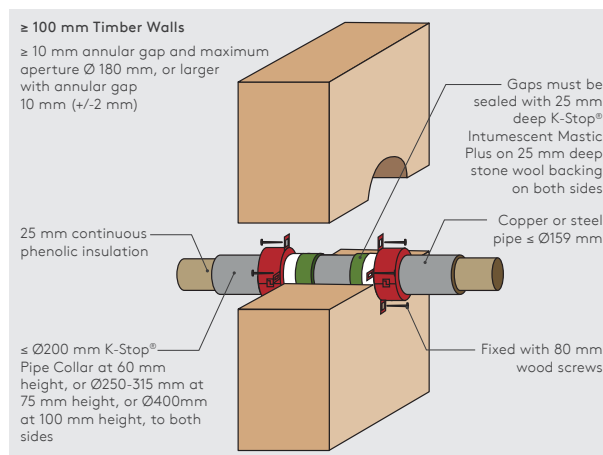
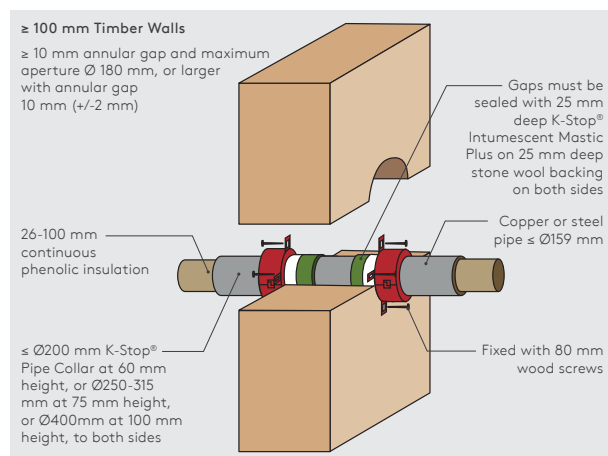


Figure W40: Copper or Steel Pipe Fire Resistance EI 45 C/C (E 45)



Floors

Substrate material and thickness	Pipe details	Kooltherm® insulation thickness	K-Stop® product solution	Fire resistance rating achieved	Figure reference
≥ 100 mm Rigid Floor	Steel pipes ≤ Ø 40 mm	13 mm	Kingspan K-Stop® Compound Fire Mortar and Kingspan K-Stop® Pipe Wrap	EI 180 C/U (E 180)	F1
≥ 100 mm Rigid Floor	Steel pipes ≤ Ø 40 mm	25 mm	Kingspan K-Stop® Compound Fire Mortar and Kingspan K-Stop® Pipe Wrap	EI 240 C/U (E 240)	F2
≥ 100 mm Rigid Floor	Steel pipes ≤ Ø 165 mm	13 - 19 mm	Kingspan K-Stop® Compound Fire Mortar and Kingspan K-Stop® Pipe Wrap	EI 120 C/U (E 180)	F3
≥ 100 mm Rigid Floor	Steel pipes ≤ Ø 324 mm	25 mm	Kingspan K-Stop® Compound Fire Mortar and Kingspan K-Stop® Pipe Wrap	EI 120 C/U (E 240)	F4
≥ 100 mm Rigid Floor	Steel pipes ≤ Ø 324 mm	26 - 50 mm	Kingspan K-Stop® Compound Fire Mortar and Kingspan K-Stop® Pipe Wrap	EI 120 C/U (E 120)	F5
≥ 100 mm Rigid Floor	Copper pipes ≤ Ø 12 mm	9 mm	Kingspan K-Stop® Compound Fire Mortar and Kingspan K-Stop® Pipe Wrap	EI 240 C/C (E 240)	F6
≥ 100 mm Rigid Floor	Copper pipes ≤ Ø 54 mm	9 - 18 mm	Kingspan K-Stop® Compound Fire Mortar and Kingspan K-Stop® Pipe Wrap	EI 60 C/C (E 180)	F7
≥ 100 mm Rigid Floor	Alupex pipes ≤ Ø 16 mm	9 mm	Kingspan K-Stop® Compound Fire Mortar and Kingspan K-Stop® Pipe Wrap	EI 240 C/C (E 240)	F8
≥ 100 mm Rigid Floor	Alupex pipes ≤ Ø 25 mm	9 - 13 mm	Kingspan K-Stop® Compound Fire Mortar and Kingspan K-Stop® Pipe Wrap	EI 180 C/C (E 240)	F9
≥ 100 mm Rigid Floor	Alupex pipes ≤ Ø 75 mm	24 mm	Kingspan K-Stop® Compound Fire Mortar and Kingspan K-Stop® Pipe Wrap	EI 90 C/C (E 180)	F10
≥ 100 mm Rigid Floor	Alupex pipes ≤ Ø 75 mm	25 mm	Kingspan K-Stop® Compound Fire Mortar and Kingspan K-Stop® Pipe Wrap	EI 180 C/C (E 180)	F11
≥ 120 mm Rigid Floor	PE, ABS and SAN+PVC pipes with wall thickness 3.0-9.5 mm, ≤ Ø 68 mm incl. insulation	9 - 50 mm	Kingspan K-Stop® Compound Fire Mortar and Kingspan K-Stop® Pipe Wrap	EI 240 C/C (E 240)	F12
≥ 120 mm Rigid Floor	PE, ABS and SAN+PVC pipes with wall thickness 3.0-9.5 mm, ≤ Ø 178 mm incl. insulation	9 - 50 mm	Kingspan K-Stop® Compound Fire Mortar and Kingspan K-Stop® Pipe Wrap	EI 240 C/C (E 240)	F13
≥ 120 mm Rigid Floor	PE, ABS and SAN+PVC pipes ≤ Ø 160 mm with wall thickness 3.0-9.5 mm, and ≤ Ø 260 mm incl. insulation	9 - 50 mm	Kingspan K-Stop® Compound Fire Mortar and Kingspan K-Stop® Pipe Wrap	EI 120 C/C (E 120)	F14
≥ 120 mm Rigid Floor	PP pipes with wall thickness 1.8-9.1 mm, ≤ Ø 68 mm incl. insulation	9 - 50 mm	Kingspan K-Stop® Compound Fire Mortar and Kingspan K-Stop® Pipe Wrap	EI 180 C/C (E 240)	F15
≥ 120 mm Rigid Floor	PP pipes with wall thickness 1.8-9.1 mm, ≤ Ø 178 mm incl. insulation	9 - 50 mm	Kingspan K-Stop® Compound Fire Mortar and Kingspan K-Stop® Pipe Wrap	EI 240 C/C (E 240)	F16
≥ 120 mm Rigid Floor	PP pipes ≤ Ø 160 mm with wall thickness 1.8-9.1 mm, and ≤ Ø 260 mm incl. insulation	9 - 50 mm	Kingspan K-Stop® Compound Fire Mortar and Kingspan K-Stop® Pipe Wrap	EI 120 C/C (E 120)	F17
≥ 150 mm Rigid Floor, Maximum annular ring width 30 mm	Steel pipes ≤ Ø 40 mm	13 - 19 mm	Kingspan K-Stop® Intumescent Mastic Plus and stone wool backing	EI 180 C/C (E 180)	F18
≥ 150 mm Rigid Floor, Maximum annular ring width 30 mm	Steel pipes ≤ Ø 165 mm	13 - 19 mm	Kingspan K-Stop® Intumescent Mastic Plus and AES Fibre backing	EI 60 C/U (E 60)	F19

Table 2 : Reference table for Kooltherm® Pipe Insulation and K-Stop® passive fire protection products in floors.

Floors

Substrate material and thickness	Pipe details	Kooltherm® insulation thickness	K-Stop® product solution	Fire resistance rating achieved	Figure reference
≥ 150 mm Rigid Floor, Maximum annular ring width 30 mm	Copper or Steel pipes ≤ Ø 12 mm	9 mm	Kingspan K-Stop® Intumescent Mastic Plus and AES Fibre backing	EI 180 C/C (E 240)	F20
≥ 150 mm Rigid Floor, Maximum annular ring width 30 mm	Copper or Steel pipes ≤ Ø 54 mm	9 – 13 mm	Kingspan K-Stop® Intumescent Mastic Plus and AES Fibre backing	EI 120 C/C (E 180)	F21
≥ 150 mm Rigid Floor, Maximum annular ring width 30 mm	Copper or Steel pipes ≤ Ø 54 mm	14 – 25 mm	Kingspan K-Stop® Intumescent Mastic Plus and AES Fibre backing	EI 60 C/C (E 90)	F22
≥ 150 mm Rigid Floor, Maximum annular ring width 30 mm	Alupex pipes ≤ Ø 16 mm	9 mm	Kingspan K-Stop® Intumescent Mastic Plus and AES Fibre backing	EI 180 C/C (E 180)	F23
≥ 150 mm Rigid Floor, Maximum annular ring width 30 mm	Alupex pipes ≤ Ø 75 mm	9 – 13 mm	Kingspan K-Stop® Intumescent Mastic Plus and AES Fibre backing	EI 60 C/C (E 120)	F24
≥ 150 mm Rigid Floor, Maximum annular ring width 30 mm	Alupex pipes ≤ Ø 75 mm	14 – 25 mm	Kingspan K-Stop® Intumescent Mastic Plus and AES Fibre backing	EI 60 C/C (E 60)	F25
≥ 150 mm Rigid Floor, ≤ 10 mm gaps between the insulation and the construction	Copper or Steel pipes ≤ Ø 54 mm	25 mm	Kingspan K-Stop® Pipe Collar with stone wool backing, single sided application	EI 45 C/C (E 120)	F26
≥ 150 mm Rigid Floor, ≥ 10 mm gaps between the insulation and the construction	Copper or Steel pipes ≤ Ø 54 mm	25 mm	Kingspan K-Stop® Pipe Collar, Kingspan K-Stop® Intumescent Mastic Plus and stone wool backing, single sided application	EI 45 C/C (E 120)	F27
≥ 150 mm Rigid Floor, ≤ 10 mm gaps between the insulation and the construction	Copper or Steel pipes ≤ Ø 158 mm	25 mm	Kingspan K-Stop® Pipe Collar with stone wool backing, double sided application	EI 45 C/C (E 120)	F26
≥ 150 mm Rigid Floor, ≥ 10 mm gaps between the insulation and the construction	Copper or Steel pipes ≤ Ø 158 mm	25 mm	Kingspan K-Stop® Pipe Collar, Kingspan K-Stop® Intumescent Mastic Plus and stone wool backing, double sided application	EI 45 C/C (E 120)	F29
≥ 150 mm Rigid Floor, ≤ 10 mm gaps between the insulation and the construction	Copper or Steel pipes ≤ Ø 159 mm	25 mm	Kingspan K-Stop® Pipe Collar with stone wool backing, double sided application	EI 60 C/C (E 120)	F30
≥ 150 mm Rigid Floor, ≥ 10 mm gaps between the insulation and the construction	Copper or Steel pipes ≤ Ø 158 mm	25 mm	Kingspan K-Stop® Pipe Collar, Kingspan K-Stop® Intumescent Mastic Plus and stone wool backing, double sided application	EI 60 C/C (E 120)	F31
≥ 150 mm Timber Floor, ≥ 10 mm annular gap and maximum aperture Ø 130 mm	Copper or Steel pipes ≤ Ø 54 mm	25 mm	Kingspan K-Stop® Pipe Collar, Kingspan K-Stop® Intumescent Mastic Plus and stone wool backing, single sided application	EI 45 C/C (E 120)	F32

Table 2 : Reference table for Kooltherm® Pipe Insulation and K-Stop® passive fire protection products in floors.

Rigid Floors

Figure F1: Insulated Steel Pipes Fire Resistance EI 180 C/U (E 180)

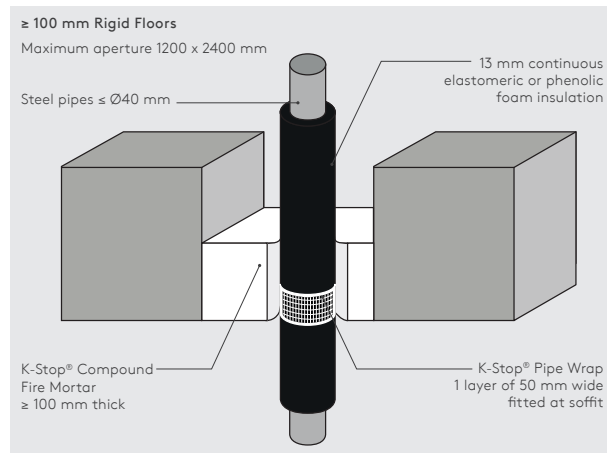


Figure F2: Insulated Steel Pipes Fire Resistance EI 240 C/U (E 240)

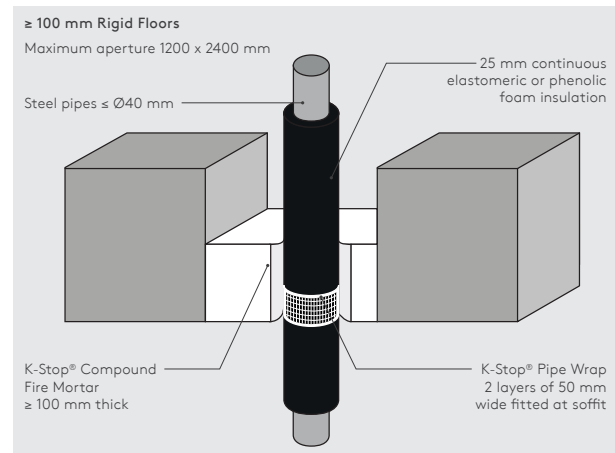


Figure F3: Insulated Steel Pipes Fire Resistance EI 120 C/U (E 180)

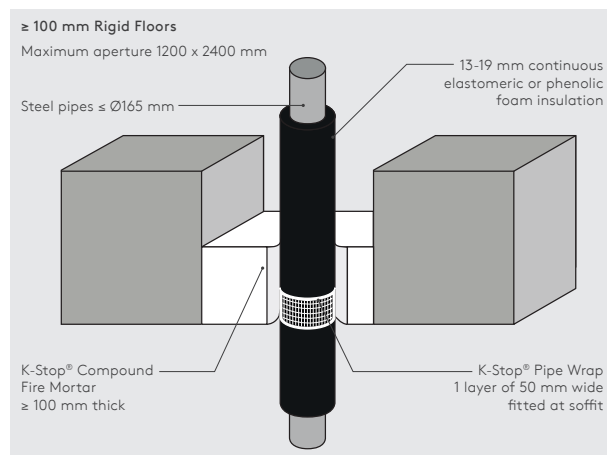


Figure F4: Insulated Steel Pipes Fire Resistance EI 120 C/U (E 240)

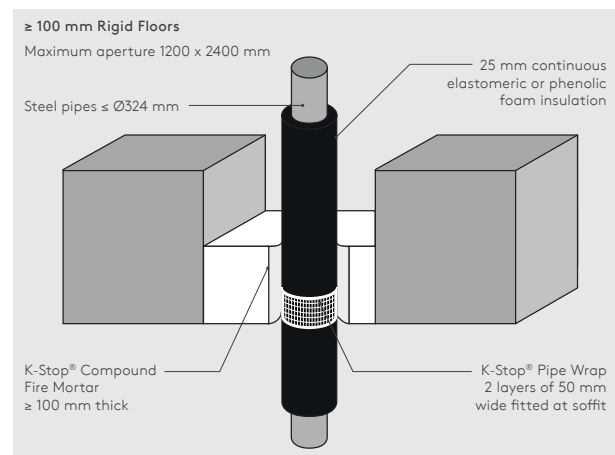


Figure F5: Insulated Steel Pipes Fire Resistance EI 120 C/U (E 120)

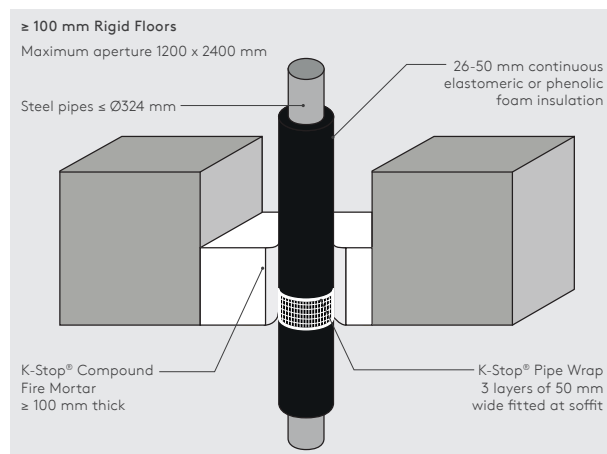
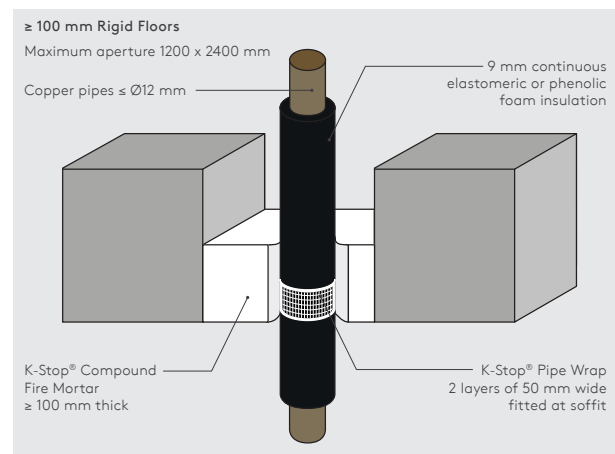


Figure F6: Insulated Copper Pipes Fire Resistance EI 240 C/C (E 240)



Rigid Floors

Figure F7: Insulated Copper Pipes Fire Resistance EI 60 C/C (E 180)

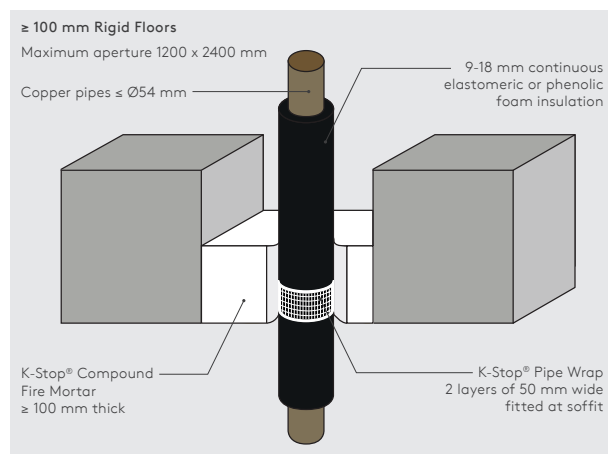


Figure F8: Insulated Alupex Pipes Fire Resistance EI 240 C/C (E 240)

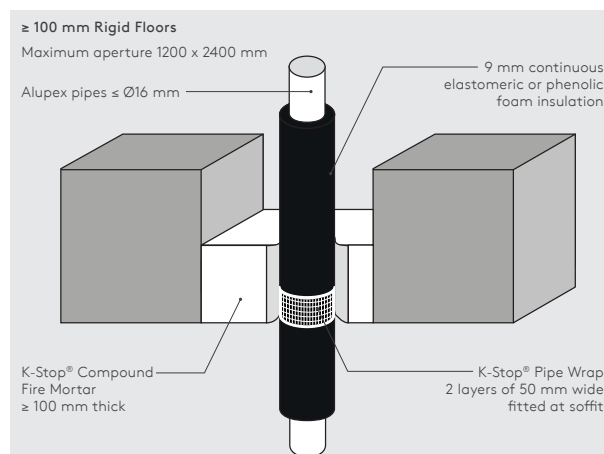


Figure F9: Insulated Alupex Pipes Fire Resistance EI 180 C/C (E 240)

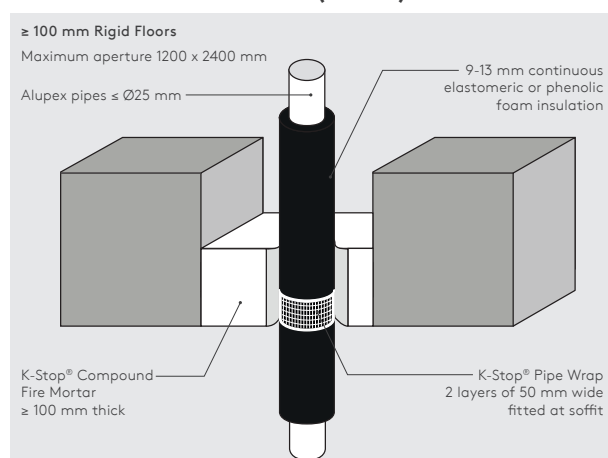


Figure F10: Insulated Alupex Pipes Fire Resistance EI 90 C/C (E 180)

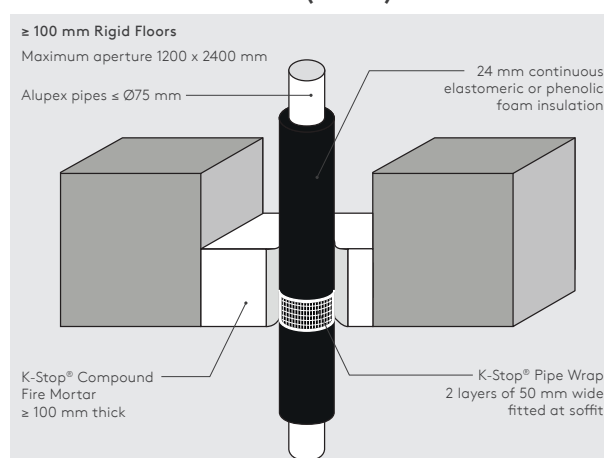


Figure F11: Insulated Alupex Pipes Fire Resistance EI 180 C/C (E 180)

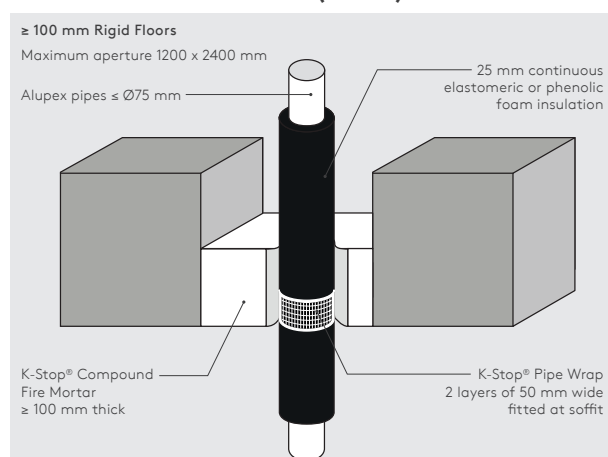
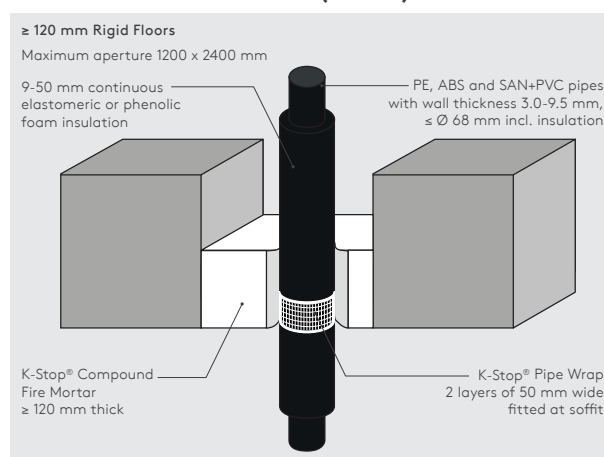


Figure F12: Insulated PE Pipes Fire Resistance EI 240 C/C (E 240)



Rigid Floors

Figure F13: Insulated PE Pipes Fire Resistance EI 240 C/C (E 240)

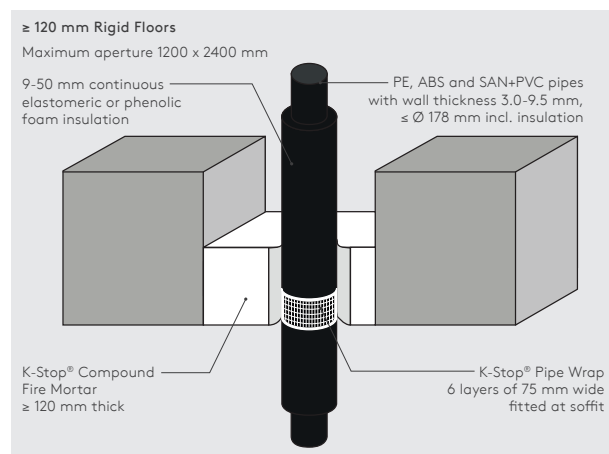


Figure F14: Insulated PE Pipes Fire Resistance EI 120 C/C (E 120)

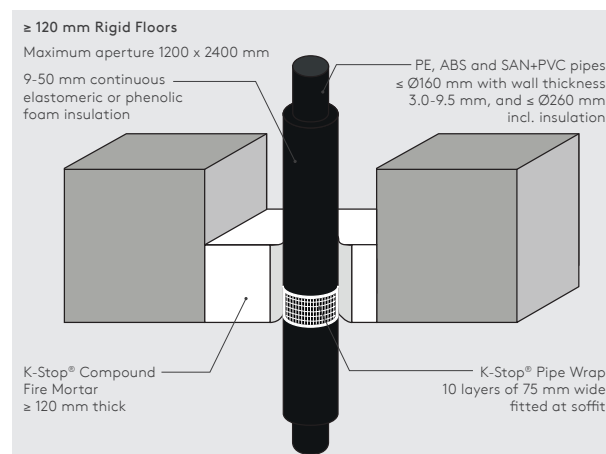


Figure F15: Insulated PP Pipes Fire Resistance EI 180 C/C (E 240)

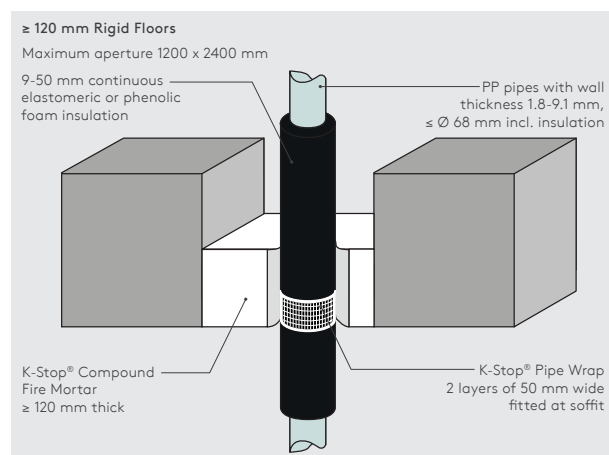


Figure F16: Insulated PP Pipes Fire Resistance EI 240 C/C (E 240)

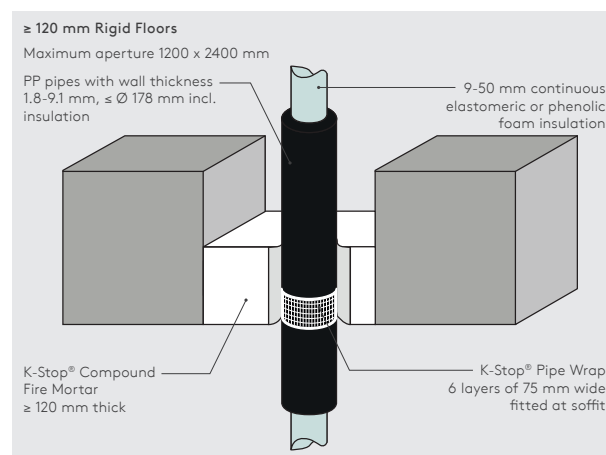


Figure F17: Insulated PP Pipes Fire Resistance EI 120 C/C (E 120)

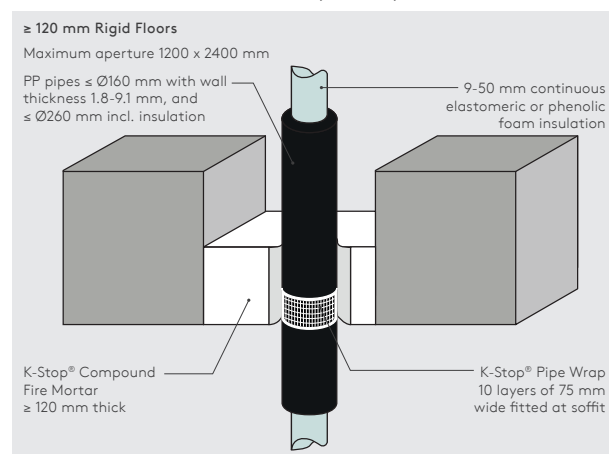
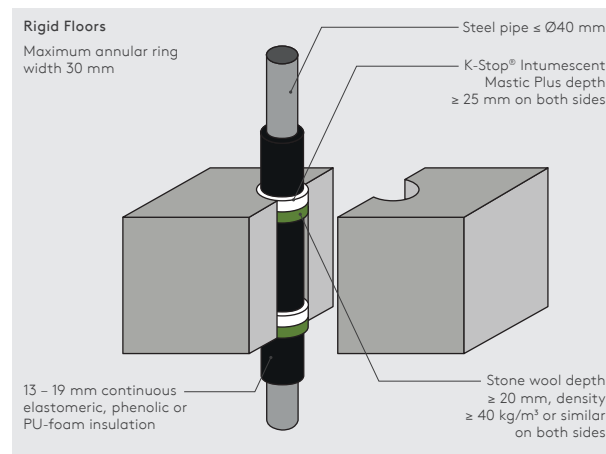


Figure F18: Insulated Steel Pipe Fire Resistance EI 180 C/U (E 180)



Rigid Floors

Figure F19: Insulated Steel Pipe Fire Resistance EI 60 C/U (E 60)

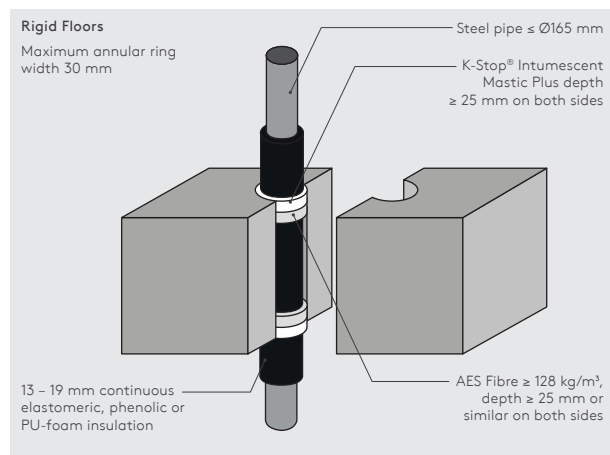


Figure F20: Copper or Steel Pipe Fire Resistance EI 180 C/C (E 240)

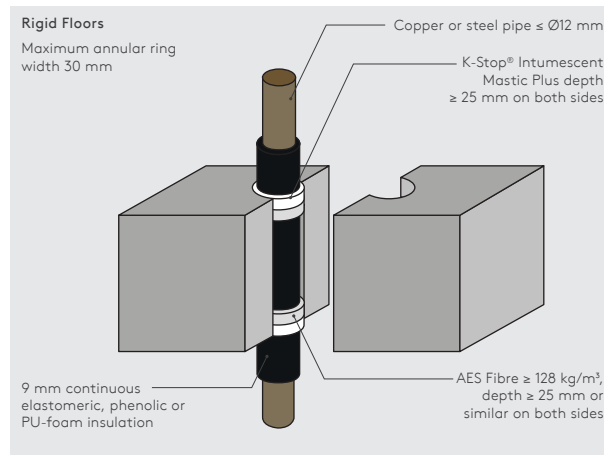


Figure F21: Copper or Steel Pipe Fire Resistance EI 120 C/C (E 180)

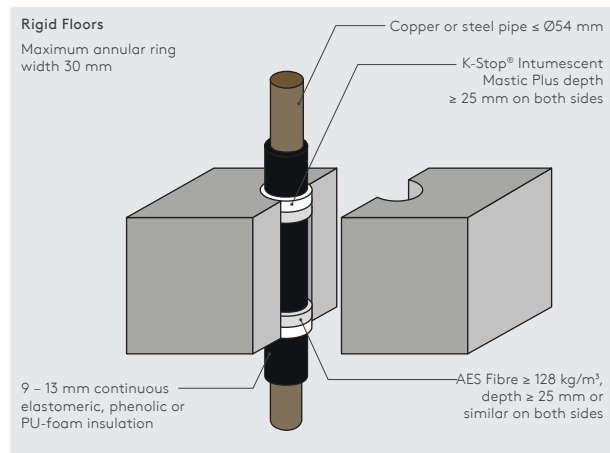


Figure F22: Copper or Steel Pipe Fire Resistance EI 60 C/C (E 90)

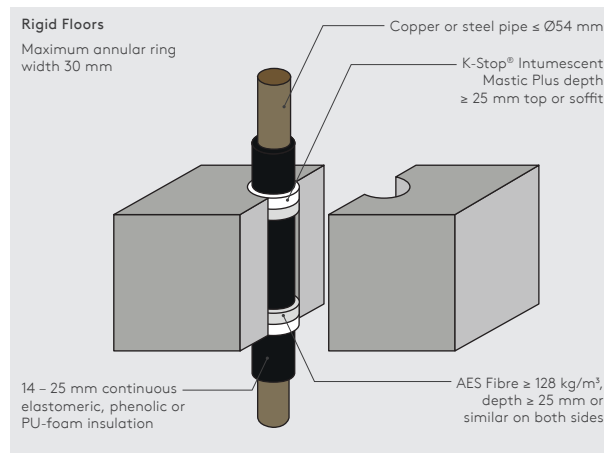


Figure F23: Insulated Alupex Pipe Fire Resistance EI 180 C/C (E 180)

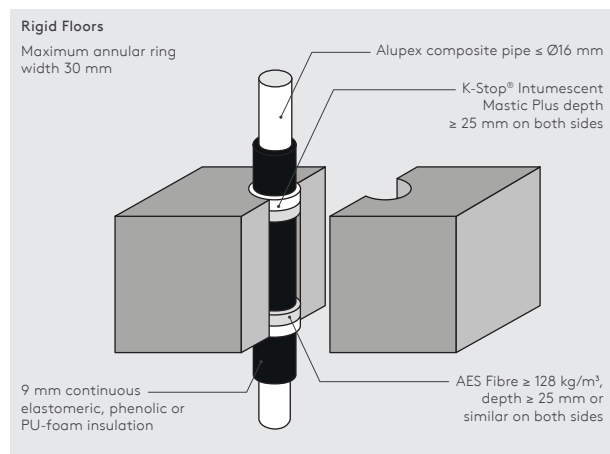
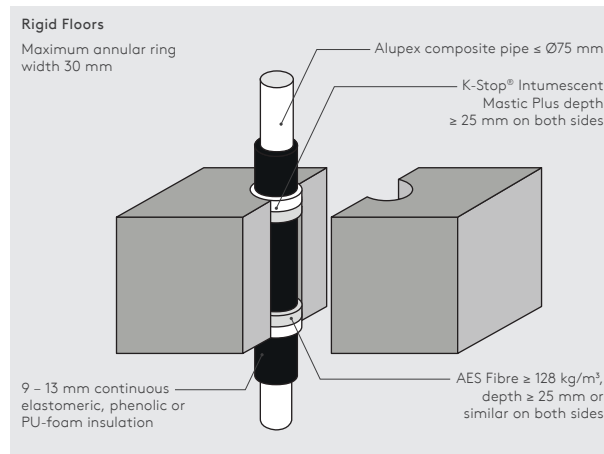


Figure F24: Insulated Alupex Pipe Fire Resistance EI 60 C/C (E 120)



Rigid Floors

Figure F25: Insulated Alupex Pipe Fire Resistance EI 60 C/C (E 60)

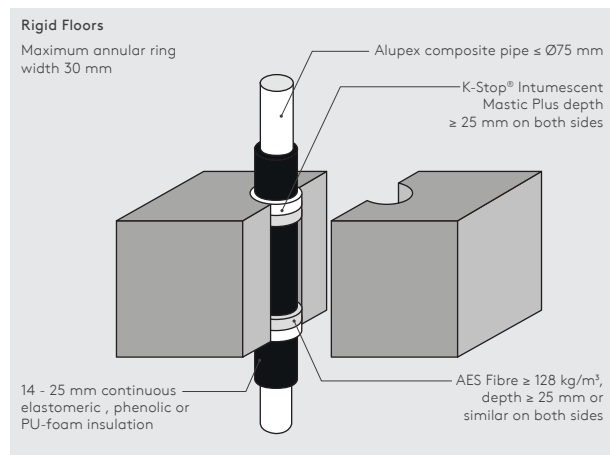


Figure F26: Copper or Steel Pipe Fire Resistance EI 45 C/C (E 120)

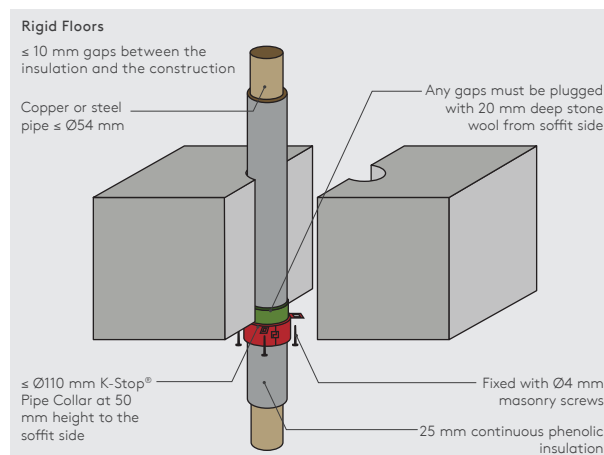


Figure F27: Copper or Steel Pipe Fire Resistance EI 45 C/C (E 120)

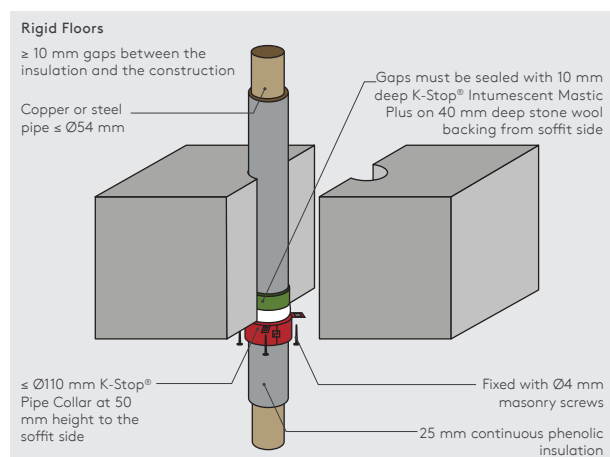


Figure F28: Copper or Steel Pipe Fire Resistance EI 45 C/C (E 120)

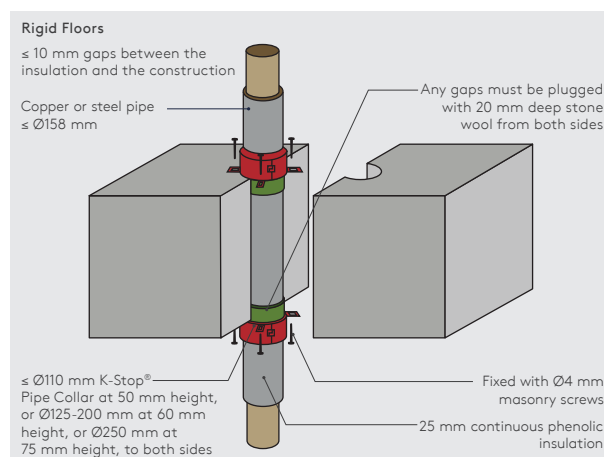


Figure 29: Copper or Steel Pipe Fire Resistance EI 45 C/C (E 120)

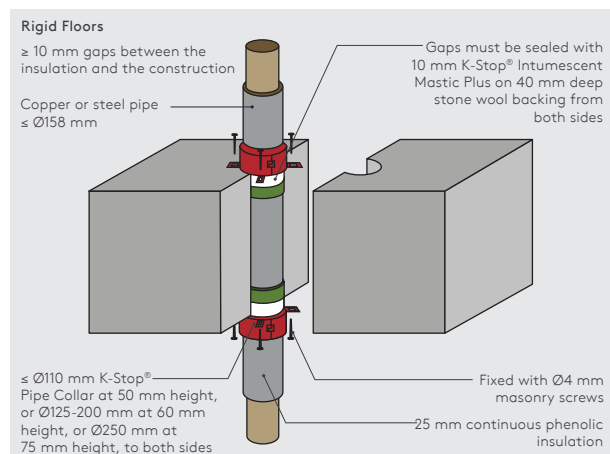
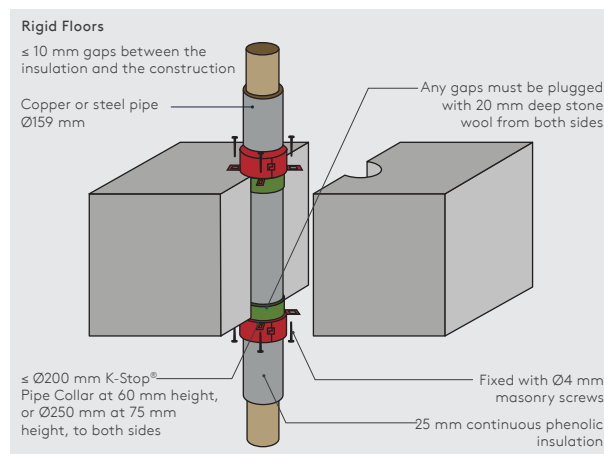
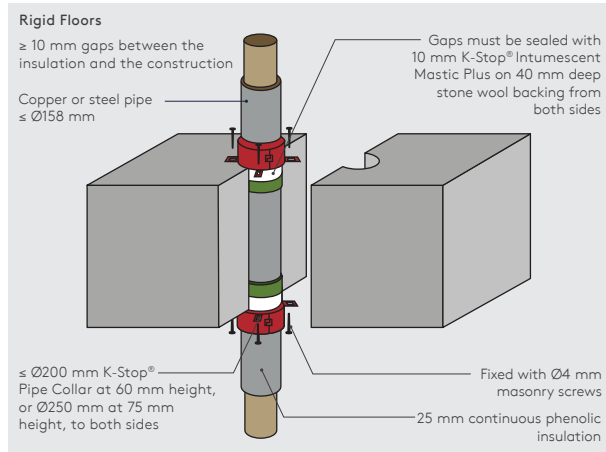


Figure F30: Copper or Steel Pipe Fire Resistance EI 60 C/C (E 120)



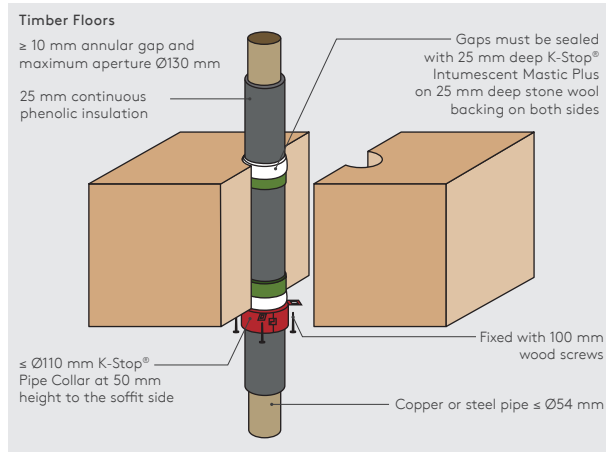
Rigid Floors

Figure F31: Copper or Steel Pipe Fire Resistance EI 60 C/C (E 120)



Timber Floors

Figure F32: Copper or Steel Pipe Fire Resistance EI 45 C/C (E 120)



Contact Details

Great Britain

Kingspan Technical Insulation Ltd
Harvey Road | Burnt Mills Industrial Estate
Basildon | SS13 1QJ

T: +44 (0) 1524 388 898

E: sales.pfp@kingspan.com

www.kingspanpassivefireprotection.co.uk

For individual department contact details please visit
www.kingspantechinsulation.co.uk/contacts

Ireland

Kingspan Insulation Ltd
Castleblayney | County Monaghan

T: +353 (0) 42 975 4219

E: sales.pfp@kingspan.com

www.kingspanpassivefireprotection.ie



To check that you have the latest version of this brochure please visit
www.kingspanpassivefireprotection.co.uk or scan the QR code directly above.

To access pre-existing product information or information relating to previously sold/ discontinued products please email info.kti@kingspan.com.

The information contained in this brochure is believed to be correct at the date of publication. Kingspan Technical Insulation Limited ("Kingspan Technical Insulation") reserves the right to alter or amend the product specifications without notice due to continuous improvement commitments. There may also be relevant changes between publications with regard to legislation, or other developments affecting the accuracy of the information contained in this brochure. Product thicknesses shown in this document should not be taken as being available ex-stock and reference should be made to the current Kingspan Technical Insulation price-list or advice sought from Kingspan Technical Insulation's Customer Service Department. The information, technical details and fixing instructions etc. included in this literature are given in good faith and apply to uses described. Kingspan Technical Insulation does not accept responsibility for issues arising from using products in applications different from those described within this brochure or failure to correctly follow the information or instructions as described within this brochure. Recommendations for use should be verified with a suitable expert or professional for suitability and compliance with actual requirements, specifications and any applicable laws and regulations. For other applications or conditions of use, Kingspan Technical Insulation offers a technical advisory service (see above for contact details), the advice of which should be sought for uses of Kingspan Technical Insulation products that are not specifically described herein. Please check that your copy of this literature is current by contacting the Kingspan Technical Insulation Marketing Department.

© Kingspan, Kooltherm, K-Stop and the Lion Device are Registered Trademarks of the Kingspan Group plc in the UK, Ireland and other countries. All rights reserved.

Registered in England and Wales, No. 05571822. Registered Office: Harvey Road, Burnt Mills Industrial Estate, Basildon, SS13 1QJ, England. VAT GB872003452.

Registered in Ireland, No. 54621. Registered Office: Bree Industrial Estate, Castleblayney, Co. Monaghan, Ireland. VAT IE45750691.

