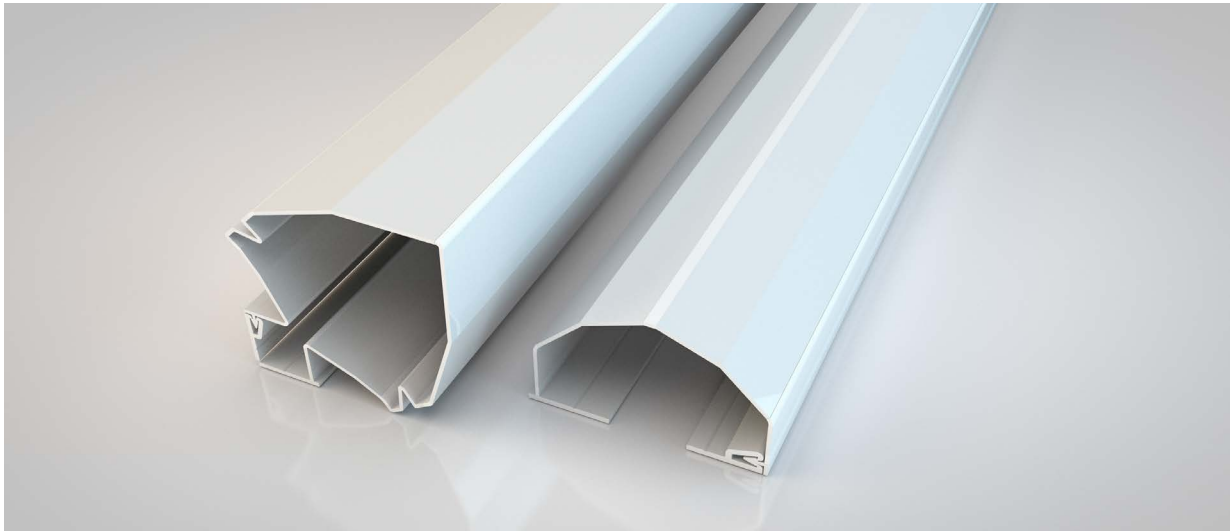


NOR200 FULL SET

NORSEAL



Application

Surface mounted to the hinge side of timber doorsets

Fixing

Self-adhesive or pinned

Performance

Door opening up to 180 degrees
SKG certified to EN 16654 & NEN 8654
250,000 cycles

Material

PVC

Length (mm)

1950

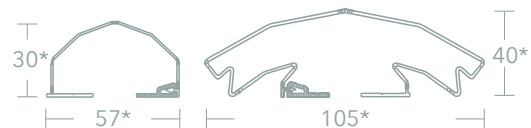
Colours

White (**WHT**) / Grey (**GRY**)

Order codes

NOR200/FS/ + Colour eg. **NOR200/FS/GRY** (Grey)

Dimensions



*Dimensions are approximates due to flexible material.

 5 Regents Drive
Prudhoe
Northumberland
NE42 6PX



[norseal.co.uk](https://www.norseal.co.uk)



sales@norseal.co.uk



01661 830088

Registered in Companies House Cardiff No. 04317595 VAT Reg. No. 733 9466 08