

Structural Protection

Product Catalogue



Structural Protection Solutions For Any Specification

As a market leading manufacturer of both Structural Protection and Fire Stopping solutions, Nullifire is at the forefront of smart passive fire protection.

Following the integration of Carboline as a brand of Tremco CPG in the UK, the Nullifire brand now has the benefit of the extensive range of Carboline primers, topcoats and mortars to meet any specification.

As the landscape of passive fire protection in construction continually evolves to meet revised safety standards, we too are committed to delivering products that meet these standards ensuring compliancy.

Our priority is to support our partners - architects, contractors, specifiers and installers to deliver enhanced structural protection in the event of a fire, enabling immediate safe evacuation of occupants and asset protection, from a single supplier.



Smartly Designed Solutions

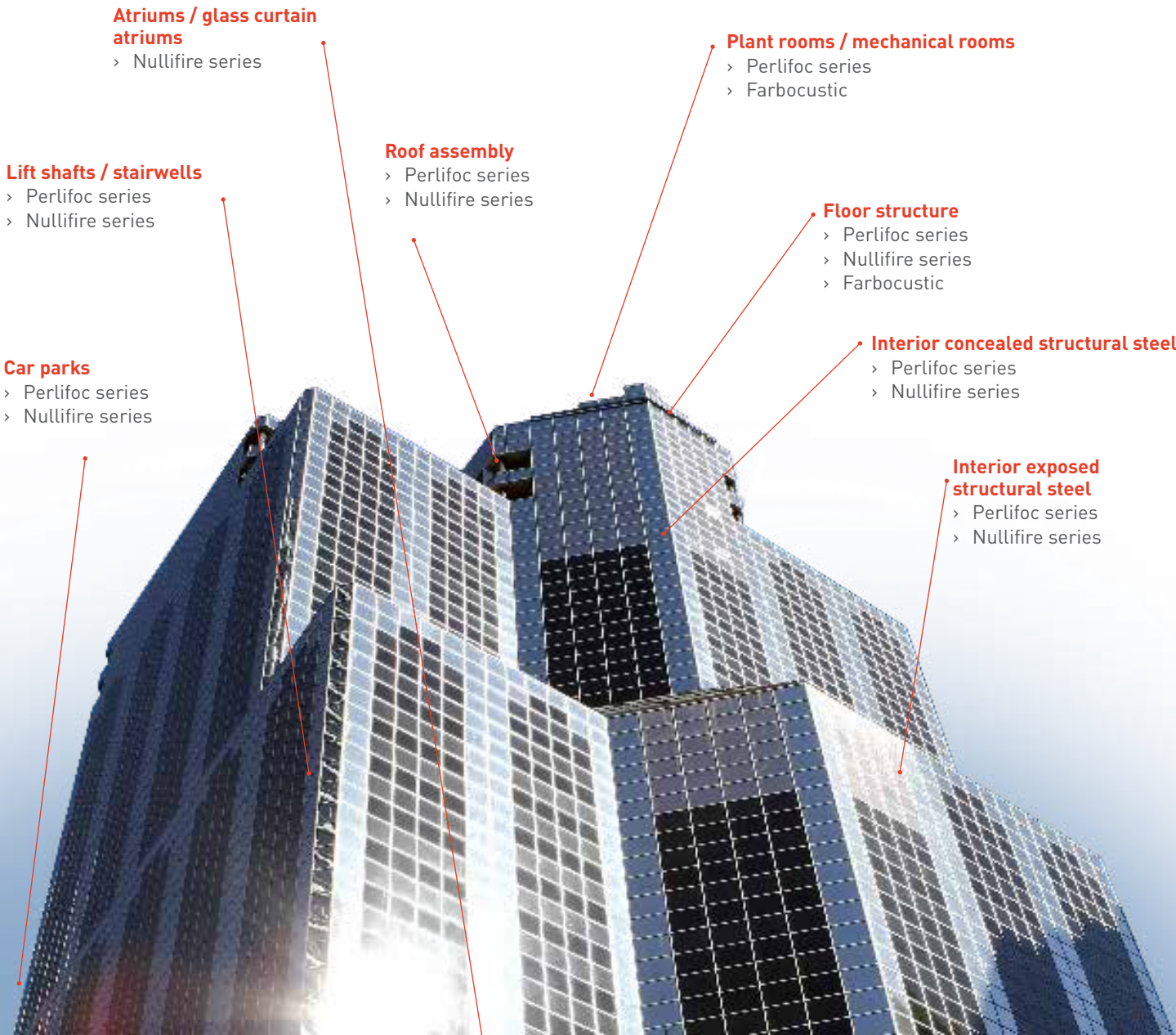
Our structural product range now offers solutions for most scenarios and substrates – such as steel and concrete.

Products engineered for compatibility, the Nullifire structural protection range is designed to provide a complete system for fire protection and decoration of structural steel and concrete. When using a complete Nullifire solution, you can achieve the required compliance, performance and desired aesthetics for the project.

Assistance When Required – Technical, Regulatory, Application Advice

Our targeted approach allows you to access answers to all of your questions- quickly, simply and for every phase of your project. Our trained expert team supports architects, specifiers, main contractors and installers in product selection, specification writing and industry best practices. Involving us at the early stages of a project can help you save money and time, as well as the assurance that the products selected are fully compliant, compatible and ideal for the job at hand.

Whilst choosing the right product is vitally important, the application is equally as critical. Our extensive range of training ensures Nullifire products are applied professionally and efficiently, whilst giving installers and contractors access to new technologies and solutions. Project specifications and schedules are also available from our technical team.



Looking For Sustainable Options?

We have systems that have demonstrated performance to resist environmental classifications from C1-C5 (ISO12944)

We work pro-actively to improve sustainability in our product formulations and packaging with our product lines.

Our Global R&D team are committed to developing products ensuring compliance, fit for purpose and with a focus on sustainability to not only protect from fire but also support our environment. Each product will show fire rating, testing certification and where

applicable – sustainability accreditations. We have a range of Environmental Product Declaration (EPDs) covering the products in our portfolio.

All of our product data sheets, technical guidance notes, application instructions, loading tables, specification guidance documents and additional product information can be downloaded from www.nullifire.com

Fire Testing & Certification

Nullifires fireproofing products have been certified to the following industry-accepted fire test standards:

- EN 13381-3 Concrete protection
- EN 13381-4 Protection of structural steel with non-reactive systems
- EN 13381-5 Composite metal/concrete deck slab protection
- EN 13381-6 Protection of concrete filled hollow steel
- EN 13381-8 Protection of structural steel with reactive systems
- EN 13381-9 Protection of beams with web openings (Cellbeams)
- EN 13381-10 Protection of solid steel rods



At Nullifire, we are able to assist with a comprehensive selection of passive fire protection products, giving architects, specifiers, and contractors the ability to achieve fire protection requirements within any building structure.

Working closely with our in-house technical team, 3rd party accredited installers can deliver the best possible and most cost-effective fire protection solution, without compromising on quality or safety.

As the sole manufacturer to offer intumescent coatings, spray applied mortars and fire stopping products, we are uniquely positioned to offer a full package to suit all project requirements. Nullifire's passive fire protection products, in combination with technical support and expert advice, gives all parties peace of mind and assurance of local building code compliance.

Our passive fire protection products undergo initial validation assessments at our in-house facilities prior to undergoing rigorous independent 3rd party testing, resulting in the following accreditation or certification:

- EAD 350140-00-1106
- EAD 350402-00-1106
- CE Marking
- Certifire

Nullifire, as part of Tremco CPG is an active participant in BSI standards, CEN working groups and the ASFP, BCF and CEPE also.



Guaranteed Source Of Quality

Pioneering technology from Nullifire to provide building owners with lifelong traceability of products after construction phase.

This unique technology offers a guaranteed source of quality and new levels of assurance, whilst acting as an incentive to ensure products are used and applied correctly.

- **Applicators** – Ability to prove product installed on site is correct.
- **Main Contractors** – Ability to ensure that the whole contract chain is adhering to the same specifications.
- **Architects and Specifiers** – Ability to ensure that the specified quality products are installed without potentially inferior quality alternatives used.



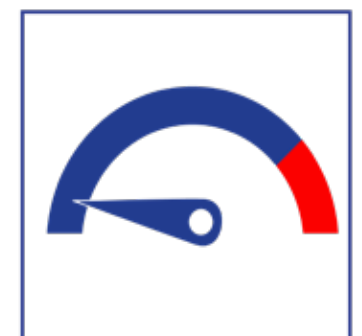
A pigment technology, which is impossible to manipulate. It's only visible with a specific Nullifire detector, owned by the team, it offers lifetime identification, remaining traceable even after a fire.



Insurance Premiums



Lifetime Traceability



Reduced Risk



SC601

Intumescent Steel Coating - Off-site & On-site

Product Overview

SC601 is a single pack acrylic thin film intumescent steel coating for the protection of internal and semi-exposed structural steelwork. SC601 is optimised to provide 60 minutes fire resistance to “I” section beams & columns, hollow beams & columns, as well as cellular beams, solid steel rods and concrete filled hollows. SC601 also provides 90 minute fire resistance and limited 120 minute protection.

Advantages at a glance:

- Competitive loadings
- Compatible with various primers and topcoats
- Easy to apply by airless spray, optimised to provide fire protection for 60 minutes as well as limited range of sections for longer protection times
- Suitable for off-site and on-site applications
- Certifire CF5767
- Optifire®+ unique traceability identifier.



SC801

Intumescent Steel Coating On-site

Product Overview

SC801 is a water based, white, thin film, intumescent coating for the protection of internal structural steelwork. It offers up to 120 minutes fire resistance to “I” section beams, columns, hollow tube columns and cellular beams.

Advantages at a glance:

- Suitable for internal use on structural steelwork for up to 120 minute fire resistance
- Easier to apply product for greater efficiency on site with improved smooth matt finish
- Low odour and very low VOC
- Compatible with various primers and topcoats
- Certifire CF5365
- Optifire®+ unique traceability identifier.



SC802

Intumescent Steel Coating On-site

Product Overview

SC802 is a water based, single pack product. SC802 offers the optimum mix of economic, environmental, aesthetic and practical benefits. Optimised to provide 60 minutes fire resistance to “I” section beams, columns, hollow columns, hollow beams and cellular beams.

Advantages at a glance:

- Competitive “all-round” 60 mins water based product
- Easy to spray to reduce downtime and potential difficulties on site
- Gives an outstanding smooth, matt finish
- Outstanding adhesion and durability
- Compatible with various primers and topcoats
- Certifire CF5420
- Optifire®+ unique traceability identifier.



SC803

Intumescent Steel Coating On-site

Product Overview

SC803 is a water based, white, thin film intumescent coating for the protection of internal structural steelwork. Optimised to provide 60 minutes fire resistance to “I” section beams, columns, hollow columns, hollow beams, cellular beams, solid steel rods and concrete filled hollow columns. Available for Ireland and EU only.

Advantages at a glance:

- Ultra low VOC
- Market leading loadings
- Easy to apply with excellent aesthetics
- Compatible with various primers and topcoats
- CE ETA 20/1210
- Optifire®+ unique traceability identifier.



SC804

Intumescent Steel Coating On-site

Product Overview

SC804 is a water based, white, thin film intumescent coating for the protection of internal structural steelwork. It was developed to give optimised loadings for 90 minutes, and up to 120 minutes fire resistance to “I” section beams, columns, hollow columns, hollow beams, cellular beams, solid steel rods and concrete filled hollow columns.

Advantages at a glance:

- Ultra low VOC
- Competitive loadings
- Excellent aesthetics
- Compatible with various primers and topcoats
- Certifire CF5929
- Optifire®+ unique traceability identifier.



SC902

Intumescent Steel Coating - Fast Track, On-site

Product Overview

SC902 is a low VOC, one coat, high build system for on-site use. It offers up to 120 minutes fire resistance to “I” section beams, columns, hollow columns, cellular beams, solid steel rods and concrete filled hollow columns.



Advantages at a glance:

- Fire rating up to 120 minutes tested to BS476 and EN13381: Part B
- Fast cure & weather resistance, even below 0°C, touch dry and shower proof within 1 hour
- Achieves external durability with an approved topcoat
- Self-priming system, up to 2 weeks post blasting
- High-build potential with all rating possible in one application
- Certifire CF5144
- Optifire®+ unique traceability identifier.

One Coat Protection Hybrid Solutions

SC900 series

SC900 series are innovative patented intumescent coatings delivering ground breaking performance for the protection of internal, semi-exposed, and external steelwork. Suitable for both on-site and off-site work.

-  SC901 Steel Coating Fast track, off site – low VOC
-  SC902 Steel Coating Fast track, on site – low VOC

Solvent Based Solutions

SC600 series

Nullifire solvent based products offer fast applied robust fire protection for structural steelwork. These products provide a more robust environmental tolerance and resistance in addition to a decorative finish, and are suitable for on-site or off-site application.

-  SC601 Steel coating off site and on site

Spray applied Mortars

Fireproof mortars

Gypsum-based mortar containing recycled materials, designed for use on steel, concrete and composite decks as a cost-effective, environmentally friendly alternative. Applied as a textured finish or smoothed to suit and can be topcoated to most RAL/BS shades from matt to high gloss using Carboline’s extensive range of topcoats.

-  Perlifoc HP Eco+

Water Based Solution -Ultra Low VOC

SC800 series

Nullifire water based solutions offer safe, fast and economical fire protection for internal steelwork. Our pioneering water based technology gives a smooth finish in a faster time than other methods. A preferred choice among specifiers and applicators, given its environmental benefits.

-  SC801 Steel Coating
-  SC802 Steel Coating
-  SC803 Steel Coating
-  SC804 Steel Coating

Acoustic mortars

Gypsum-based acoustic mortar. Offering an aesthetically pleasing textured finish whilst achieving excellent acoustic performance. Products are available in a wide range of colours from the RAL & BS colour ranges.

-  Farbocustic



	Mortars		Intumescents	
Product Codes	Perlifoc HP Eco+	Farbocustic	SC803	SC804
Substrate	Slab Wall Beam Column Composite slab Hollow core Clay pot	Slab	Slab Wall Beam Column Hollow core Clay pot	Slab Wall Beam Column Hollow core Clay pot
Rating	Up to R240	Up to R240	Up to R240	Up to R240
Exposure	Internal	Internal	Internal	Internal
Approvals	EN13381-3 EN13381-5 EN1364-1 EN13501-1 EN13501-2	EN13501-1 EN13381-3	EN13381-3	EN13381-3



	Mortars	
Product Codes	Farbocoustic	Perlifoc HP Eco+
Substrate	Soffit Ceiling	Soffit Ceiling
Exposure	Internal	Internal
Sound Absorption	aw <0.85 (in accordance with UNE - EN-ISO 354) NRC <0.8 (in accordance with ASTM C423)	aw 0.2 (in accordance with UNE-EN ISO 11654:1998)
Thermal Conductivity	0.051 W/m.K (UNE-EN 12667:2002)	0.087 W/m.K (UNE-EN 12667:2002)
Additional	EN13501-1-Reaction to Fire A1 Classification	EN13501-1-Reaction to Fire A1 Classification



	Intumescent						Mortars
Product Codes	SC601	SC801	SC802	SC803	SC804	SC902	Perlifoc HP Eco+
Substrate	Hot rolled steel Stainless steel Galvanised steel Cast iron Cellular beams Solid rods Concrete filled hollows	Hot rolled steel Stainless steel Galvanised steel Cast iron Cellular beams	Hot rolled steel Stainless steel Galvanised steel Cast iron Cellular beams	Hot rolled steel Stainless steel Galvanised steel Cast iron Cellular beams Solid rods Concrete filled hollows	Hot rolled steel Stainless steel Galvanised steel Cast iron Cellular beams Solid rods Concrete filled hollows	Hot rolled steel Stainless steel Galvanised steel Cast iron Cellular beams Solid rods Concrete filled hollows	Hot rolled steel Stainless steel Galvanised steel Cast iron
Rating (Optimised)	R60	R120	R60	R60	R90	R120	R240
Exposure	External	Internal	Internal	Internal	Internal	External	Internal
Approvals	BS476 Pt 20-22 YB5 Cell beam EN13381-6 EN13381-10	BS476 Pt 20-22 YB5 Cell beam	BS476 Pt 20-22 YB5 Cell beam	CE Marking - 2812 - CPR GA5037 EAD 350402 - 00 - 1106 EN13381-6 EN13381-8 EN13381-9 EN13381-10	BS476 Pt 20-22 YB5 Cell beam EN13381-6 EN13381-8 EN13381-10	CE Marking - 2812 - CPR GA5018 EAD 350402 - 00 - 1106 BS476 Pt 20-22 YB5 Cell beam EN13381-6 EN13381-8 EN13381-9 EN13381-10	EN13381-4

Tested for Compatibility

It's crucial to test primers, intumescent steel coatings and topcoats together to avoid costly problems and ensure a smooth fire protection process. Compatibility also guards against delamination of the coatings once installed which can be extremely costly to rectify once construction has finished and the building is in use.

Primers are designed to protect the surface of structural steel from corrosive attack. They also provide a suitable key onto which a Nullifire intumescent steel coating can be applied.

Topcoats provide an outstanding quality decorative finish, which is particularly useful where steelwork remains exposed as opposed to being hidden by false ceiling installations or by boarding around columns.

We're very meticulous and rigorous when selecting and advising the appropriate primers and topcoats for the full steel protection system. All our intumescent steel coatings have been tested with a wide range of primers and topcoats from the Carboline portfolio. These can be ordered directly from Nullifire, your single source for a high performance coating system.



Carboguard 60
Epoxy Polyamide

High Solids Anti Corrosion Epoxy Primer

Carboguard 60 is a high solids, versatile, abrasion resistant, chemical resistant, and corrosion resistant coating. It can be used as a primer, intermediate coat, or self-priming finish over steel or inorganic zinc primers.

- Low odor and low VOC
- Good chemical resistance
- Fast cure & dry times
- Attractive medium sheen for tank exteriors
- Good chemical resistance

Carboguard I340
Polyamido-Amine Epoxy

High Solids Epoxy Penetrating Primer

Penetrating primer/sealer for use on concrete substrates and Carboline Pyrocrete Fireproofing products. It performs extremely well in sealing cementitious surfaces and is designed to receive a variety of different generic types of finish coats. It can also be used as a surface tolerant primer on steel.

- Exceptional wetting characteristics
- Low stress, highly flexible film
- Very high solids
- Low odor
- User-friendly brush & roller application
- VOC compliant to current AIM regulations

Carbomastic 15 LT
Two-components, high solids aluminium pigmented, low temperature curing modified epoxymastic

Aluminium Epoxy Primer

Carbomastic 15 LT is a high build coating with excellent adhesion to rusted steel and most aged coatings.

- Surface tolerant
- Recommended for painting over rusted steel where hand cleaning only is possible
- Carbomastic 15 LT penetrates through rust to steel substrate and stops further corrosion and undercutting
- Fast curing at low temperatures
- High solids give good coverage and reduced solvent emission
- Excellent maintenance primer for piping, bridges, tank exteriors, ships and offshore structures etc...

Carbothane I34 HP
Polyamido-Amine Epoxy

High Gloss & High Solid Polyurethane Topcoat

Thin film, high gloss finish with exceptional weathering performance. Used extensively in industrial markets. Provides a smooth durable finish that has superior resistance to corrosion, abrasion and chemical exposure.

- High solids. low VOC content
- Excellent weatherability
- Excellent flexibility
- Excellent abrasion resistance
- Optimal protection with minimum layer thickness
- Excellent flow behaviour with spray and roll application
- VOC compliant to current AIM regulations

Carbothane I34 CG
Aliphatic Acrylic Polyurethane

Semi Gloss Acrylic Polyurethane Topcoat

A polyurethane with a glossy finish. Once applied it forms a hard and easy-to-clean film. It has good resistance to spills and splashes of acids, alkalines and most solvents.

- Excellent weatherability
- Excellent flexibility
- Excellent abrasion resistance
- Optimal protection with minimum layer thickness
- Excellent flow behaviour with spray and roll application
- Available in many colours / matt
- VOC compliant to current AIM regulation



Our Structural Protection used across the globe

Trusted worldwide

Nullifire is trusted worldwide and used across the globe, recognised for delivering reliable passive fire protection solutions in some of the most demanding environments.



UN Offices, Geneva



Torre Glòries, Barcelona



Crescent Development, Baku



Santiago Bernabeu, Madrid



Construction Products Group

Tremco CPG Europe manufactures high performance building materials in order to solve the complex challenges faced by today's construction industry. With over 1,400 employees across Europe, we are committed to being by your side to shape a world where buildings and structures save energy, last longer and exceed sustainability benchmarks.

Delivering World-Class Construction Product Solutions.

The product brands housed within Tremco CPG Europe cover a wide array of different construction needs and provide a wealth of complex services, support and systems that are rarely found together under one roof.

Sealing, bonding & insulation



Window Insulation, Façade Construction, Exterior Insulation & EIFS, Structural & Inplant Glazing, Insulated Concrete Forms (ICFs)

Passive fire protection



Intumescent Coatings, Fire Stopping and Spray Applied Mortars

Flooring



Seamless Resin Flooring, Subfloor Preparation, Car Parking Structures

Waterproofing



Potable & Waste Water Industry, Balconies, Terraces, Basements & Foundations

Roofing



Liquid Applied Systems, Felt Systems, Vegetated Roofing

Europe's leading construction products brands...





Tremco CPG UK Limited
Coupland Road
Hindley Green
WN2 4HT, UK

+44 (0) 1942 251400
hello@tremcocpg.com
www.tremcocpg.eu



www.nullifire.com



firesales@tremcocpg.com



[@Nullifire](https://www.facebook.com/Nullifire)



[/company/Nullifire](https://www.linkedin.com/company/Nullifire)

2025-07