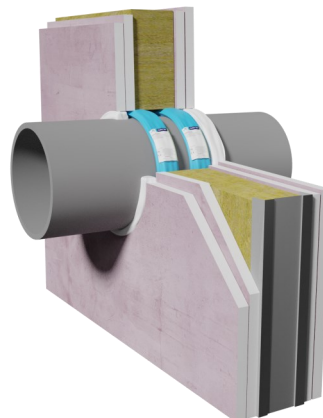


## PipeBloc® PWP

### Fire Resistance Pipe Wrap



#### General description

PipeBloc PWP is a fire resistant prefabricated pipe wrap consisting of a PE sheathing and an intumescent insert for interior penetration sealing applications. PipeBloc PWP is designed to provide a high volume expansion and pressure seal during a fire to combustible pipes that pass through floor and wall service openings.

#### Packaging

- Boxed with 20 x PipeBloc PWPs in each box

#### Application and use

To reinstate fire resistance through walls and floors where combustible services penetrate the substrate

Used in conjunction with FSi Promat products such as Stopseal Batt, Silverseal Compound and Pyrocoustic Sealant.

#### Product Details

Material	LDPE sheathing with intumescent insert
Weight	0.1kg - 3.4kg (depending on PipeBloc PWP size)
Finish / Colour	Branded LDPE sheath, black inner
PipeBloc PWP Width	40mm
Chemical properties/ COSHH statement	This product is an article as defined in article 3 of regulation (EC) No 1907/2006 (REACH). It contains no substances which are intended to be released from the article under normal or reasonably foreseeable conditions of use. A safety data sheet following article 31 of the same regulation is not needed to bring the product to the market, to transport or to use it. For safe use follow the instructions given in this product data sheet. Based on our current knowledge, this product does not contain SVHC (substances of very high concern) as listed in Annex XIV of the REACH regulation or on the candidate list published by the European Chemicals Agency in concentrations above 0.1 % (w/w)
Size/dimensions (product & installation spacial requirement)	For penetrations seals, opening size and penetration service covered as per requirements of UL-EU-01022-CPR
Shelf Life	10 Years
Working life	10 Years ( ETA-20/1008 )
Durability	Type X: Intended for use in conditions exposed to weathering.

### Product Certification / Approvals

Approval	Reference number
ETA	ETA-20-1008
CE Mark	2531-CPR-CX010251
UL-EU	UL-EU-01022-CPR
UKCA	0843-CPR-1154

### Testing / Classification

Standard	Description	Result
BS EN 1366-3	Fire resistance tests for service installations. Penetration seals	See UL-EU-01022-CPR for fire resistance performance
ASTM E84	Standard Test Method for Surface Burning Characteristics of Building Materials	Contact <a href="mailto:technical.fsi.uk@etexgroup.com">technical.fsi.uk@etexgroup.com</a> for details
BS EN 13501-2	Fire classification of construction products and building elements	building elements See UL-EU-01022-CPR for fire resistance performance

## Technical Data Sheet

### Installation & Operation

FSi Ltd. recommend installation of FSi Ltd. products is carried out by 3rd party certified installers.

Simple tools and equipment may be required, depending on your aperture: • Tape measure • Cartridge gun • Marker or pencil • Straight edge • Masking tape • All purpose saw • Pad saw • Pallet knife or pointing trowel • Drill or screw driver

Clean substrate and service ensuring they are clean, dry, sound and homogeneous, free from oils, grease, dust and loose particles. The product does not require a primer on most common surfaces.

For larger openings, the aperture will need to be filled with Stopseal Batt at the same time as the PipeBloc PWP is installed. See TDS001 for installation and UL-EU-01022-CPR for tested systems. Adequate space and accessibility should be provided for cutting and shaping the batts, applying and tooling the sealant.

For smaller openings, Open PipeBloc PWP and wrap around the service, use self-adhesive label to secure. Push into aperture circa 5mm Apply the second PipeBloc PWP to the other side of the wall and seal with Pyrocoustic Sealant. Floor systems may require PipeBloc PWP to be installed to both sides also.

Clean all tools and application equipment with water immediately after use.

annular space apply Pyrocoustic Sealant at 5mm depth after wrap is installed. Use pointing tool to smooth off.

Competence records should be kept for all individuals installing this product (s). Installations should be suitably recorded and logged. should be suitably recorded and logged.

### Maintenance

Recorded inspection should be conducted in line with the maintenance and inspection schedule defined for the building/project.

These inspections should be completed and recorded by suitably competent individuals at intervals outlined in the operation and maintenance manual relevant to the building.

Ensure Safe Access and Egress when carrying out maintenance or inspection.

Where product (s) is damaged or tampered, new product should be installed in line with installation guidance.

### Handling & Storage

Store in a well-ventilated, dry, cool environment. Recommended temp ranges +5°C - +35°C, however can be -20 °C min. / +70 °C max. Protect against exposure to direct sunlight. Always ensure that safe manual handling procedures are followed at all times.

For information and advice on the safe handling, storage and disposal of chemical products, please refer to the most recent Safety Data Sheet (SDS) available at [www.promat.com/en-gb](http://www.promat.com/en-gb)

## Technical Data Sheet

### Disposal

The PipeBloc PWP is considered a complex article. Therefore, considerations on disposal should be made per component.

#### LDPE Sheathing

The sheathing used as a component for the PipeBloc PWP product is a low-density polyethylene film and can be readily recycled.

European Waste Catalogue code: **15 01 02**  
(WASTE PACKAGING, ABSORBENTS, WIPING CLOTHS, FILTER MATERIALS AND PROTECTIVE CLOTHING NOT OTHERWISE SPECIFIED; packaging (including separately collected municipal packaging waste); plastic packaging)

Disposal of waste packaging material must be done according to official regulations and in accordance with a licensed collector's sorting instructions.

#### Intumescent materials

The intumescent material used within the PipeBloc PWP system is not classified as hazardous, it is, however, non-recyclable.

European Waste Catalogue code: **17 09 04**  
(CONSTRUCTION AND DEMOLITION WASTES (INCLUDING EXCAVATED SOIL FROM CONTAMINATED SITES); other construction and demolition wastes; mixed construction and demolition wastes other than those mentioned in 17 09 01, 17 09 02 and 17 09 03.)

Disposal of waste intumescent material must be done according to official regulations and in accordance with a licensed collector's sorting instructions.

You must classify your own waste, the information given above is guidance only. Waste must be classified on a case-by-case basis

### Legal Notes

FSi Ltd. products are manufactured to rigid standards of quality. Any product which has been applied in accordance with FSi Ltd.'s written instructions and in any application recommended by FSi Ltd., but which is proved to be defective in product quality, will be replaced free of charge. No liability can be accepted for the information provided in this document although it is published in good faith and believed to be correct at time of issue. Any drawings provided are for illustrative purposes only. FSi Ltd. reserves the right to alter product specifications without prior notice, in line with our Company policy of continuous development and improvement. Changes due to new findings are possible, errors and misprints are not excluded. No liability whatsoever will be accepted for any loss, damage or injury arising from the use of the information given. FSi Ltd. have no control over the methods of installation, competence of operatives or suitability of site conditions, no warranties, expressed or implied, are intended to be given as to the actual performance of the product/system mentioned within this document.

## Technical Data Sheet

SKU CODES			
Item Code	Description	Size	Box Qty
PWP32FP	PipeBloc® PWP	32mm	20
PWP40FP	PipeBloc® PWP	40mm	20
PWP55FP	PipeBloc® PWP	55mm	20
PWP63FP	PipeBloc® PWP	63mm	20
PWP75FP	PipeBloc® PWP	75mm	20
PWP82FP	PipeBloc® PWP	82mm	20
PWP90FP	PipeBloc® PWP	90mm	20
PWP110FP	PipeBloc® PWP	110mm	20
PWP125FP	PipeBloc® PWP	125mm	20
PWP140FP	PipeBloc® PWP	140mm	20
PWP160FP	PipeBloc® PWP	160mm	20