



ROYAL
OPERA
HOUSE

EVENT SPACES

Paul Hamlyn Hall, Bow Street Entrance ©
2018 ROH. Photograph by Luke Hayes



WELCOME

The Royal Opera House is at the centre of London's artistic life and is the UK's leading destination for world-class opera and ballet. Our building is home to three of the world's greatest performing arts companies: The Royal Ballet, The Royal Opera and the Orchestra of the Royal Opera House. We bring together the world's most extraordinary artists in live, streamed and broadcast events, with performances that thrill, move and excite, and transport people to other worlds. Our theatres are in London's Covent Garden, but our work is accessed and experienced across the UK and globally through touring partnerships, cinema programmes, radio, TV and streaming. Our mission is to enrich the cultural life of the nation by growing the public enjoyment and appreciation of exceptional ballet, dance, opera and music.

The Royal Opera House auditorium © ROH
2016. Photograph by Sim Canetty-Clarke

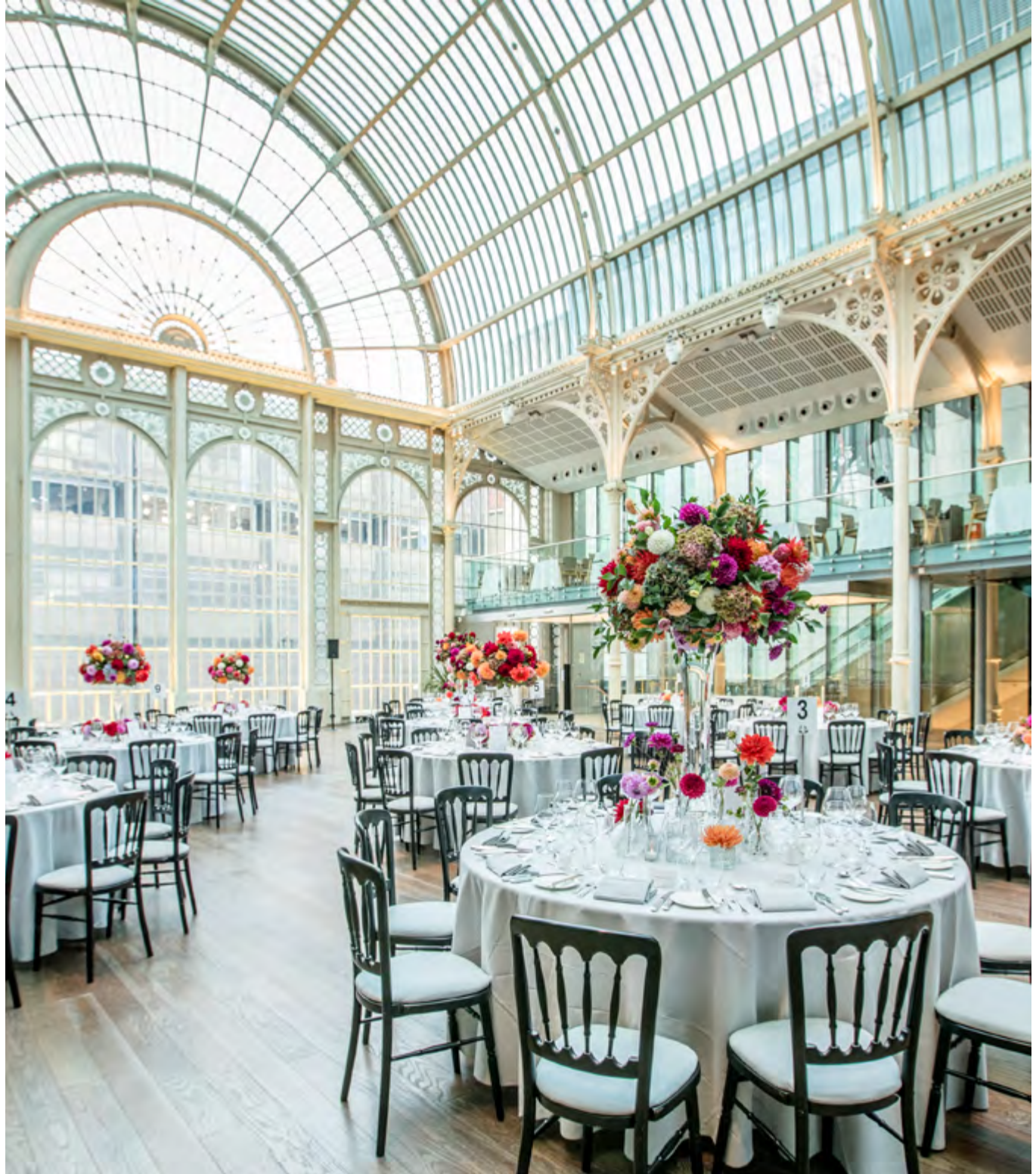


PAUL HAMLYN HALL BY DAY

The Paul Hamlyn Hall, completed in 1860, was originally known as the Floral Hall and was part of the iconic Covent Garden flower market.

Today, the Paul Hamlyn Hall has become the main event space for guests.

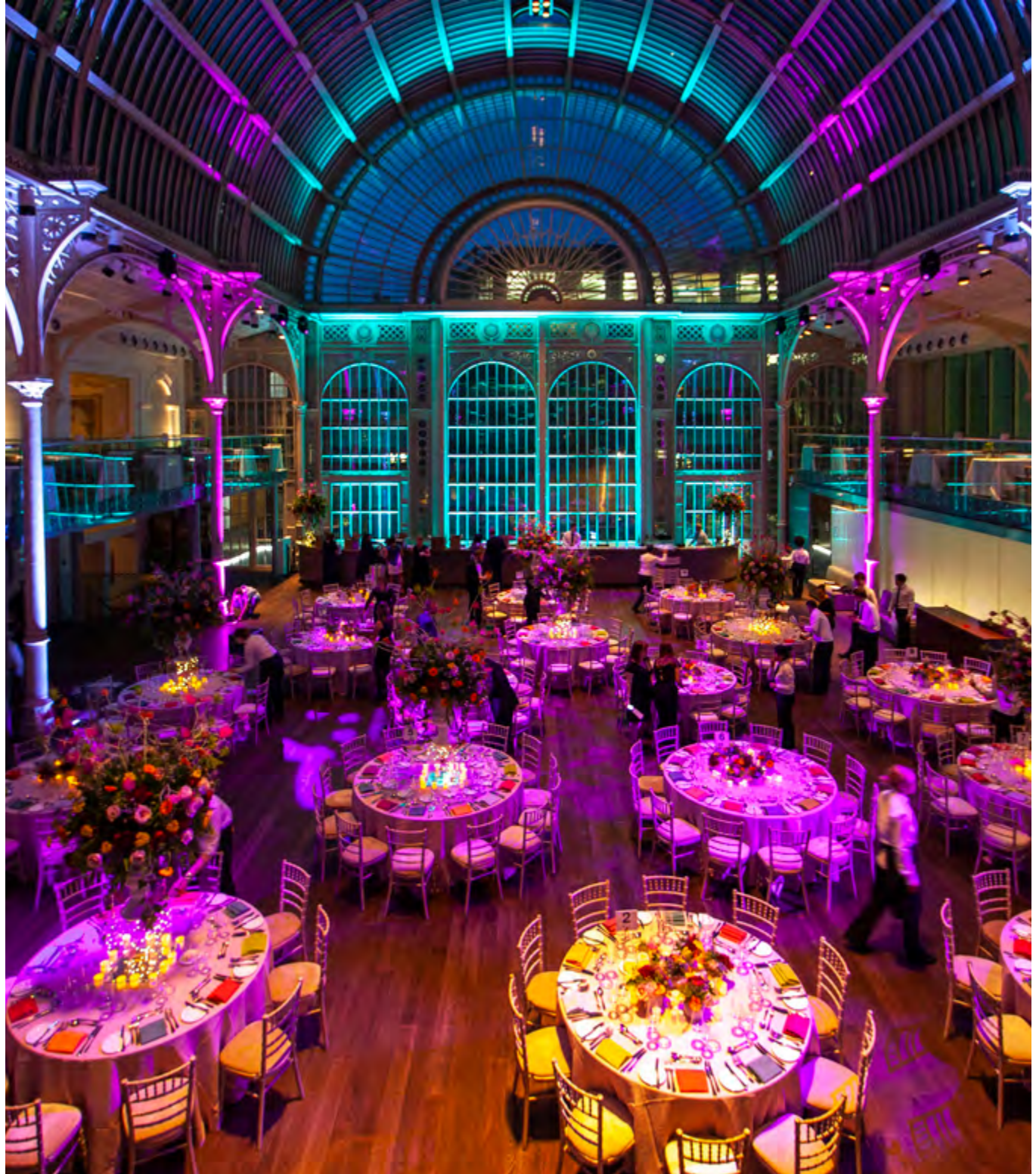
With its magnificent ironwork and ample natural light, the Hall is guaranteed to leave a lasting impression. The venue is perfectly suited for lunches, conferences, fashion shows, wine tastings, product launches and other daytime events.



PAUL HAMLYN HALL BY NIGHT

The Paul Hamlyn Hall has been used for iconic evening events for more than 150 years and is now associated with some of London's most glittering parties and dinners.

As night falls, the glamour of the Paul Hamlyn Hall comes to the fore. Your guests will find it difficult to resist an invite for an exclusive night at the Royal Opera House. Evening availability is limited to a few nights a year, which makes this space all the more special for stand-out events such as top award ceremonies.

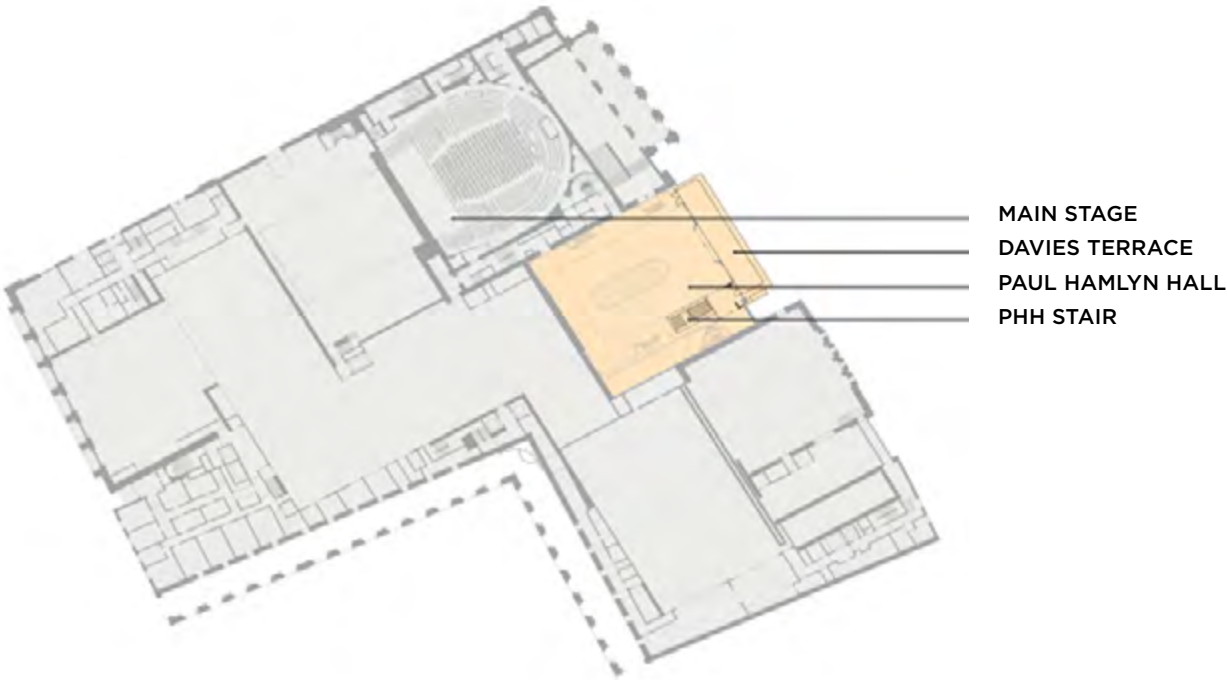


Royal Opera House, Paul Hamlyn Hall
evening © ROH Photograph by Lia Vittone

PAUL HAMLYN HALL FLOORPLAN

CAPACITY

- 200
Cabaret style
- 300
Dinner/Dance
- 350
Theatre style
- 350
Seated lunch/dinner
- 600
Standing reception



PAUL HAMLYN HALL LEVEL

Architect's diagram of the Paul Hamlyn Hall
level of the Royal Opera House building ©ROH

CRUSH ROOM

The richly decorated Crush Room dates back to 1858. It is an impressive venue for smaller conferences, launches and lunches, particularly during the day. As the rooms are used to host the audience on performance nights, evening availability is limited.

Royal Opera House, Crush Room reception
© ROH Photograph by Lia Vittone



DORFMAN CONSERVATORY

The Dorfman Conservatory bridges the history of the old carriage entrance on Bow Street and the modern architecture of the Open Up spaces. The newly-renovated conservatory space elegantly accommodates drinks receptions and smaller functions. It can be booked with the Crush Room as a space for refreshments and networking.



The newly renovated Dorfman Conservatory
©ROH 2017

CRUSH ROOM AND DORFMAN CONSERVATORY FLOORPLAN

CRUSH ROOM

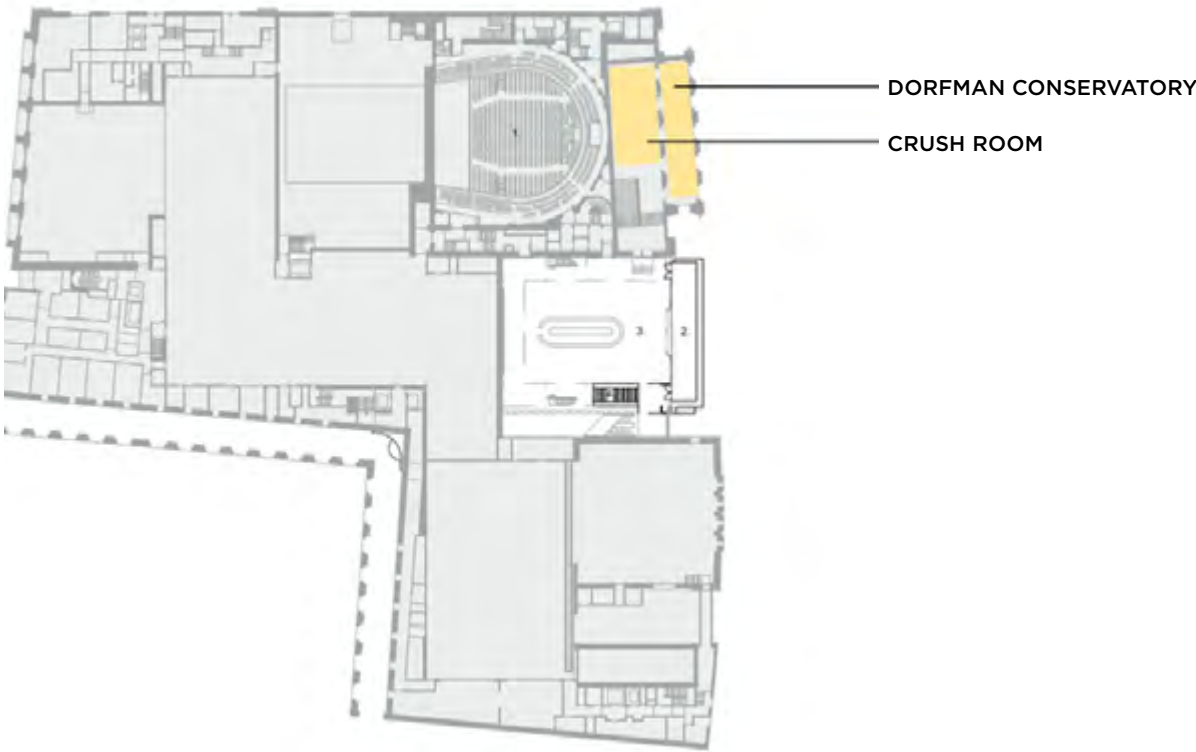
- 48
Cabaret style
- 90
Seated lunch/dinner
- 140
Theatre style
- 200
Standing reception

DORFMAN CONSERVATORY

- 70
Standing reception

COMBINED CAPACITY

- 270
Standing reception



PAUL HAMLYN HALL LEVEL

LEVEL 5 BAR

The sophisticated Level 5 Bar gives a clear view over the Paul Hamlyn Hall, and can be hired in conjunction with the Hall for a reception.



Bar Level 5 at the Royal Opera House ©2018
ROH. Photograph by Luke Hayes

PIAZZA

On the top floor of the Royal Opera House, Piazza offers great views over the Covent Garden rooftops and a distinctive dining experience.

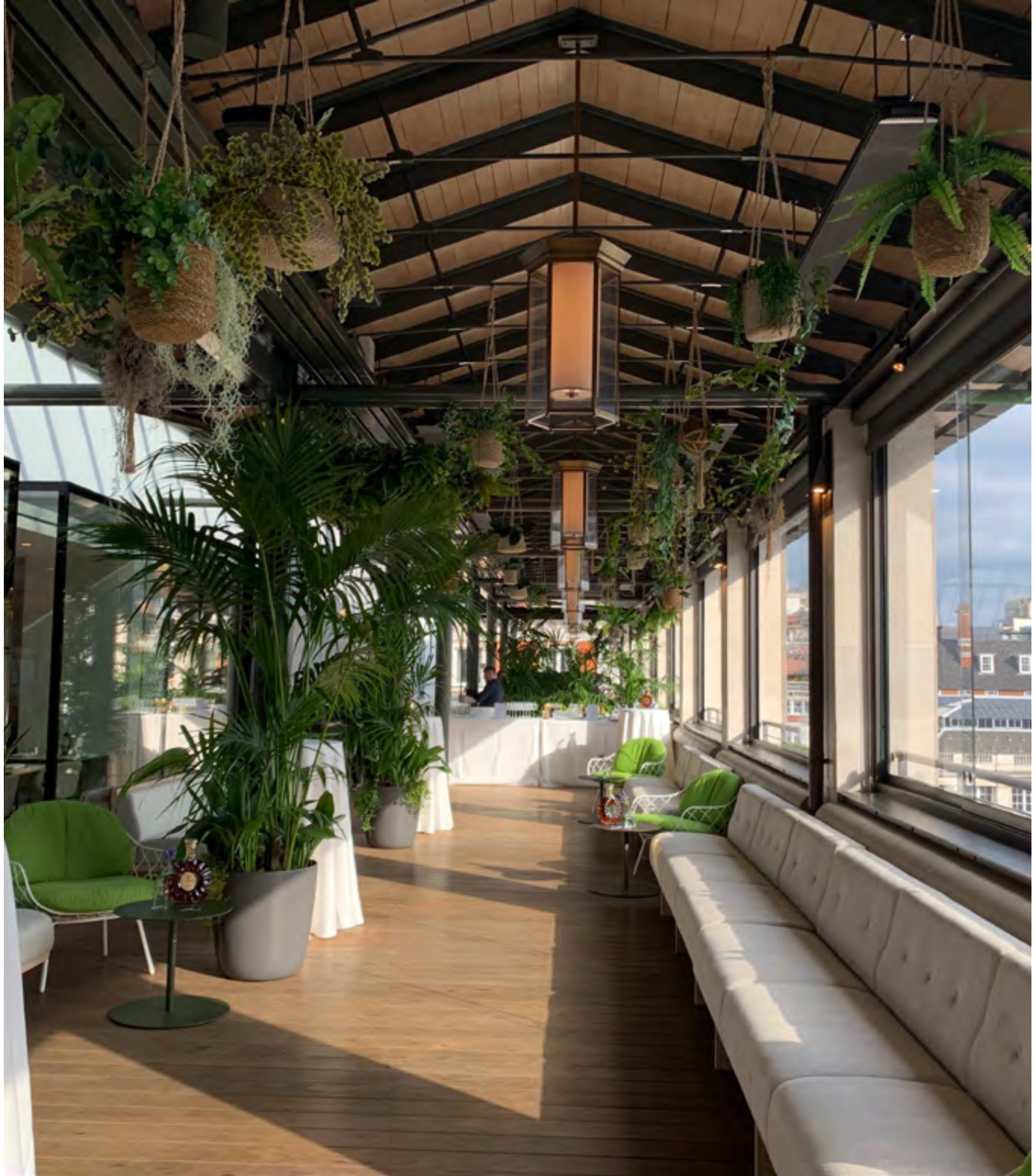
ROH Piazza ©2022 ROH. Photograph by
Laura Jalbert



PIAZZA TERRACE

The Piazza Terrace is a flexible, welcoming and comfortable space with great views over Covent Garden. The Terrace is covered and offers light and airy outdoor space in the centre of London.

Section of the Piazza terrace
©ROH



LEVEL 5 BAR
PIAZZA AND TERRACE
FLOORPLAN



LEVEL 5 BAR
PIAZZA AND TERRACE

550
Standing reception

PIAZZA TERRACE

100
Semi-private section on a
performance evening

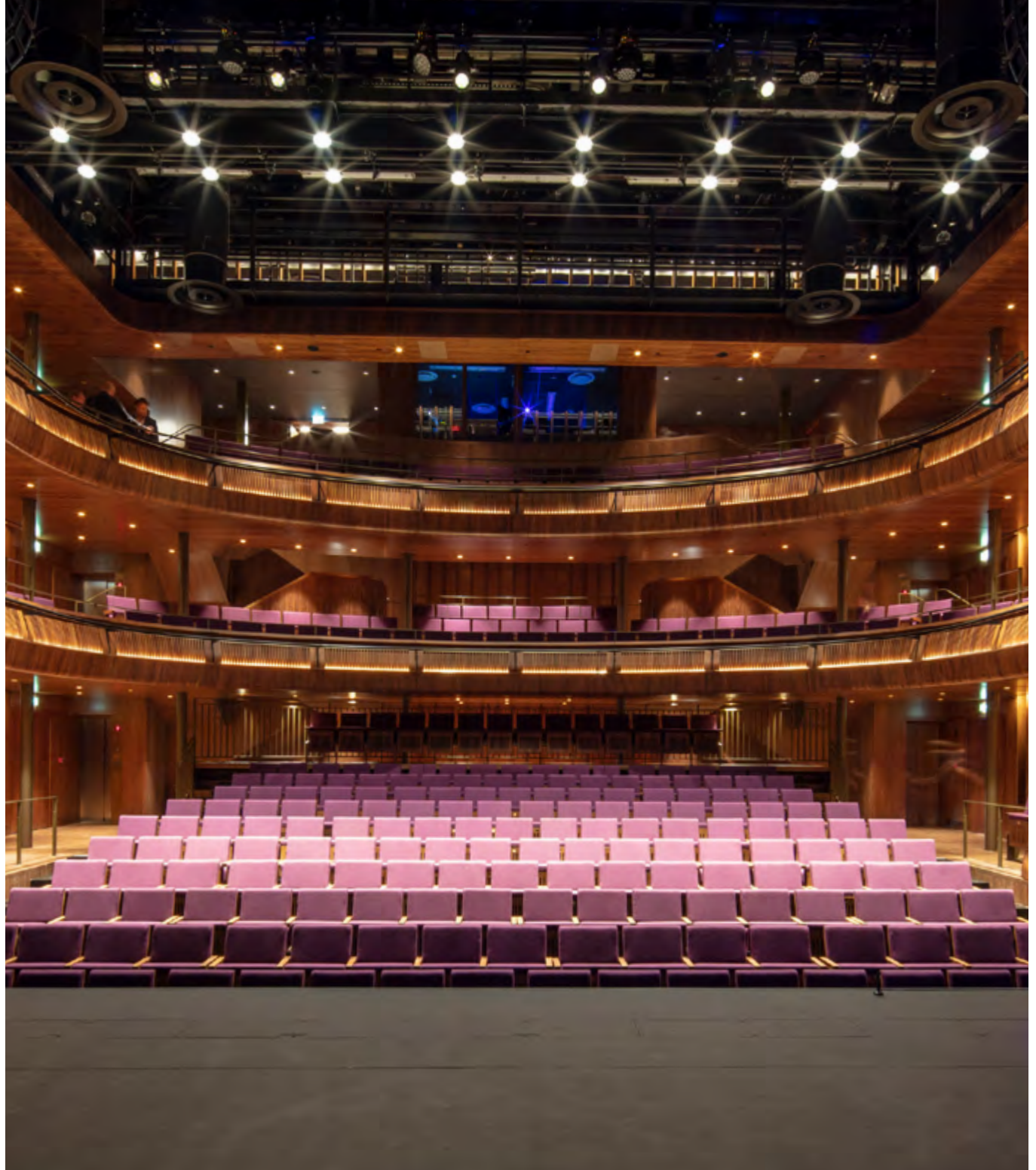


LEVEL 5

LINBURY THEATRE

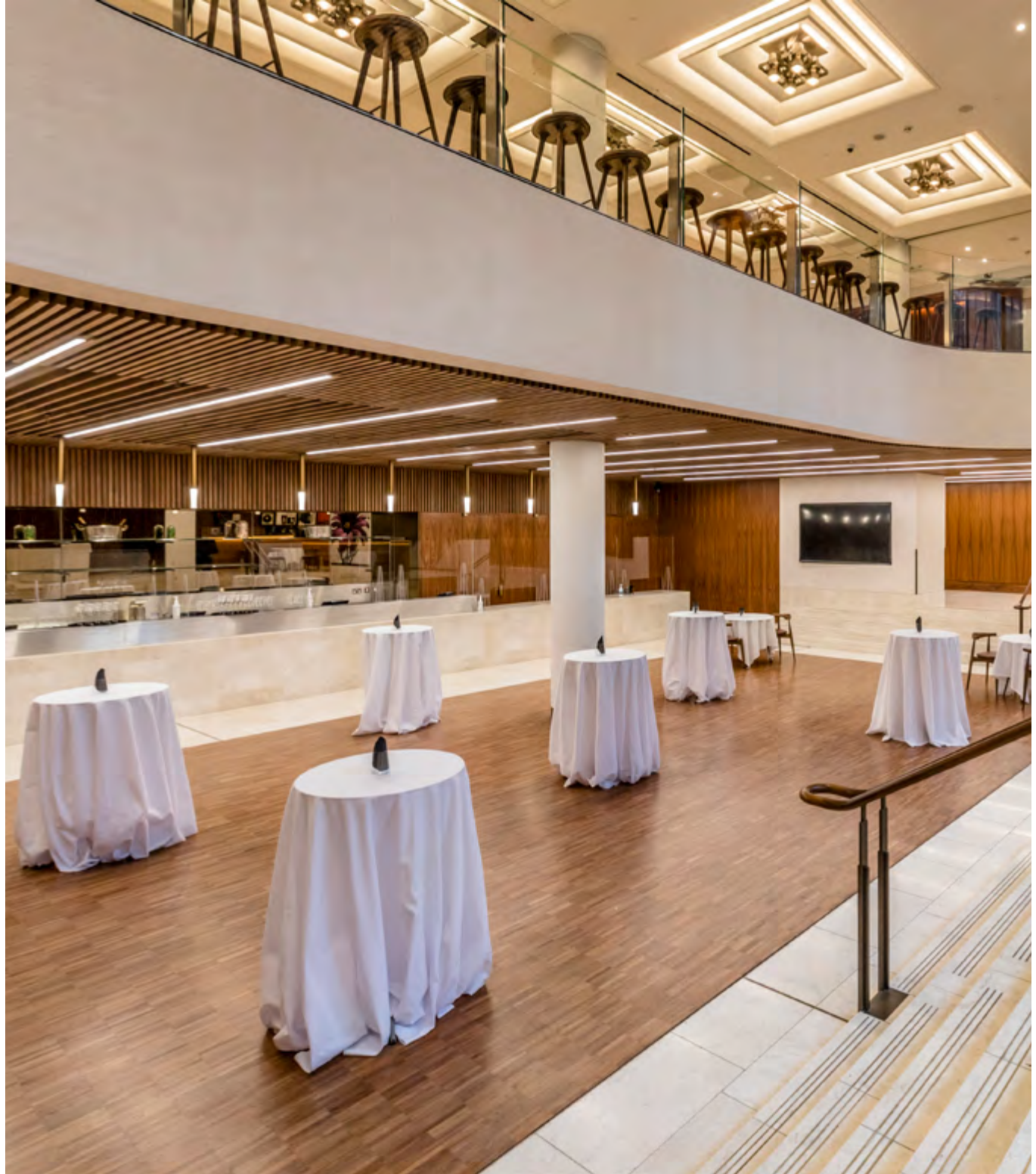
Our second stage is one of the West End's newest and most intimate theatres. The layout and staging is versatile, and the auditorium is comfortable with good views. Hire can include green rooms, dressing rooms and technical support.

The Royal Opera House redesigned
Linbury Theatre ©Hufton+Crow



LINBURY FOYER

The Linbury foyer and bar is a perfect space for standalone events, or for registration, reception and breaks between sessions for events in the Linbury Theatre.



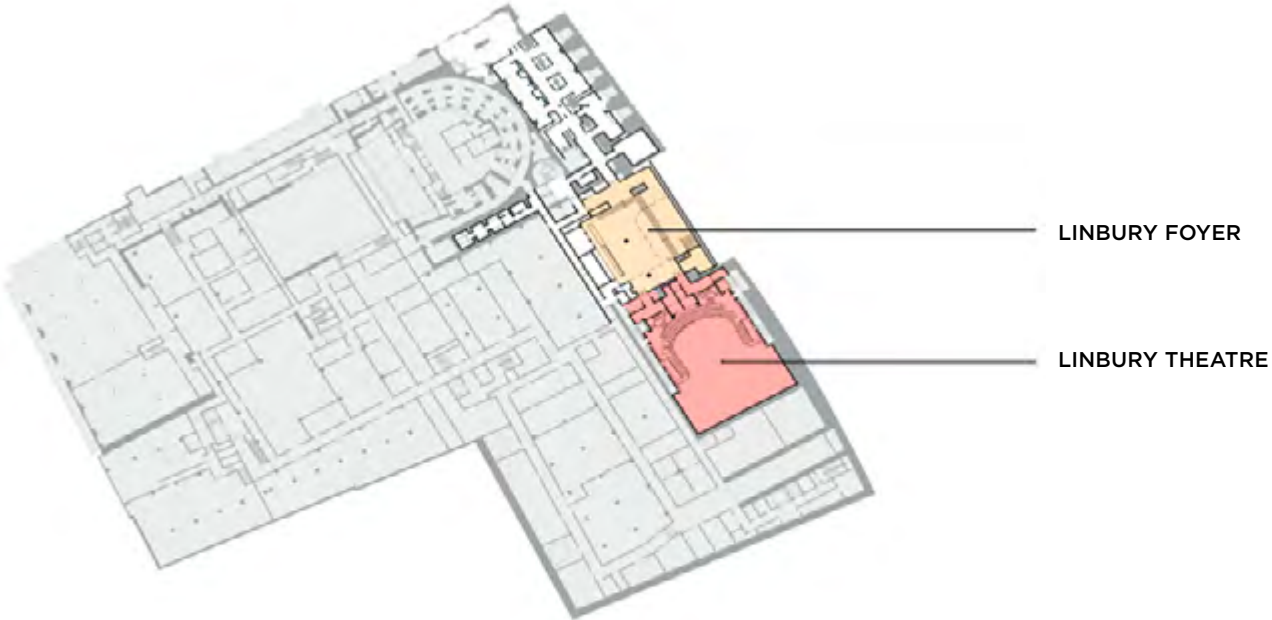
LINBURY THEATRE AND FOYER FLOORPLAN

THEATRE

350
Auditorium

FOYER

260
Standing reception



LOWER GROUND LEVEL

Architect's diagram of the Lower Ground level
of the Royal Opera House building ©ROH

THE ROYAL BALLET STUDIOS

If you're looking for an intriguing venue for dinners and receptions, the three studios that The Royal Ballet dancers rehearse in by day can be yours by night.

These simple, white spaces provide a canvas ready for you to create a memorable event for your guests.

The studios are ideal for wine tastings, receptions and dinners where guests can soak up the Royal Opera House's theatrical atmosphere among the ballet barres and mirror-lined walls. Private terraces alongside the studios offer spectacular views across the London skyline.

MACMILLAN STUDIO

100

Seated dinner

110

Standing reception

CLORE STUDIO

150

Seated dinner

250

Standing reception

176

Theatre style

Royal Opera House, Clore Studio reception
© ROH Photograph by Lia Vittone



UNIQUELY THE ROYAL OPERA HOUSE

Enhance your event with bespoke tours, guest speakers, tailored gift bags and intimate performances from opera singers, string quartets or jazz bands.

Your guests will be greeted and guided around the building by our wonderful in-house ushers.

A private event experience at the Royal Opera House also can include:

- Dedicated Event Manager
- Front of House and Security staff
- Cloakroom facilities
- Technical support
- Hybrid capabilities

Young ROH ©2022 ROH.
Photograph by Laura Aziz



CATERING

Company of Cooks, our in-house caterer, will be pleased to create a bespoke menu for your food and drink requirements. Company of Cooks is part of CH&CO, a specialist catering and hospitality business that operates across many sectors throughout the UK and Ireland including workplaces, education, destinations, events, venues, livery and healthcare. CH&CO holds the top-level three-star Food Made Good rating from the Sustainable Restaurant Association, and it holds a Royal Warrant for catering services to HM the Queen. They have provided catering to the Royal Opera House since 2008, helping to pair world-renowned arts with world-class food.

Royal Opera House, Paul Hamlyn Hall drinks
© ROH Photograph by Lia Vittone



ACCREDITED SUPPLIERS

We work with leaders in the industry. Our suppliers are familiar with our building and work closely with our staff. We choose and monitor our suppliers on criteria of quality, safety, sustainability and professionalism.

FLORISTS

BLOOMSBURY FLOWERS
bloomsburyflowers.co.uk
info@bloomsburyflowers.co.uk
+44 (0)20 7242 2840

FIONA FLEUR
fionafleur.com
studio@fionafleur.com
+44 (0)7955 065 282

PINSTripES & PEONIES
pinstripesandpeonies.com
flowers@pinstripesandpeonies.com
+44 (0)20 7720 1245

SHANE CONNOLLY & COMPANY
shaneconnolly.co.uk
events@shaneconnolly.co.uk
+44 (0)20 8964 4398

LAVENDER GREEN
lavendergreen.co.uk
info@lavendergreen.co.uk
+44 (0)20 8171 1001 (Store)
+44 (0)20 7127 5303 (Studio)

SIMON LYCETT
simonlycett.co.uk
enquiries@simonlycett.co.uk
+44 (0)20 7277 3322

THE URBAN FLOWER FIRM
theurbanflowerfirm.com
tuff@theurbanflowerfirm.com
+44 (0)20 7252 3228

TECHNICAL AND AV

ECLIPSE
eclipse.global
sales@eclipse.global
+44 (0)20 8662 6444

EVENT CONCEPT
eventconcept.co.uk
info@eventconcept.co.uk
+44 (0)20 7740 3988

EQUIP
equip.london
kathryn.eade@equip.london
+44 (0)20 7733 4488

FISHER PRODUCTIONS
fisherproductions.co.uk
enquiries@fisherproductions.co.uk
+44 (0)20 8871 1978

WHITE LIGHT
whitelight.ltd.uk
royal.opera.house@whitelight.ltd.uk
+44 (0)20 8254 4870

WISE PRODUCTIONS
wiseproductions.co.uk
events@wiseproductions.co.uk
+44 (0)20 8991 6922

VENUE CAPACITIES

VENUES	STANDING RECEPTION	SEATED LUNCH/DINNER	DINNER/DANCE	CABARET STYLE	THEATRE STYLE
PAUL HAMLYN HALL	600	350	300	200	350
CRUSH ROOM	200	90		48	140
DORFMAN CONSERVATORY	70				
CRUSH ROOM AND DORFMAN CONSERVATORY	270	90		48	140
LEVEL 5 BAR, PIAZZA AND TERRACE	550				
PIAZZA TERRACE	100 Semi-private section on a performance evening	50			
LINBURY THEATRE					350
LINBURY FOYER	260				
MACMILLAN STUDIO	110	100			
CLORE STUDIO	250	150			176

OUR HISTORY

There has been a theatre on the current Royal Opera House site since 1732. The Royal Opera House stage has played host to some of the world's greatest performers from Luciano Pavarotti to Maria Callas, Rudolf Nureyev to Margot Fonteyn, and continues to build its reputation for national and international excellence. The first ballet was performed in the original Theatre Royal in 1734, and a year later Handel's first Season of operas began. The current theatre was designed by Edmund Barry and opened in 1858. Barry's original classically-inspired design can still be seen in many of the opulent rooms.

The Floral Hall decorated for social dancing in the late 19th century ©ROH



CONTACT US

roh.org.uk/venue-hire
commercialevents@roh.org.uk
+44 (0)20 7212 9490

Royal Opera House
Bow Street
London
WC2E 9DD

Royal Opera House exterior ©2018 ROH.
Photograph by Luke Hayes

