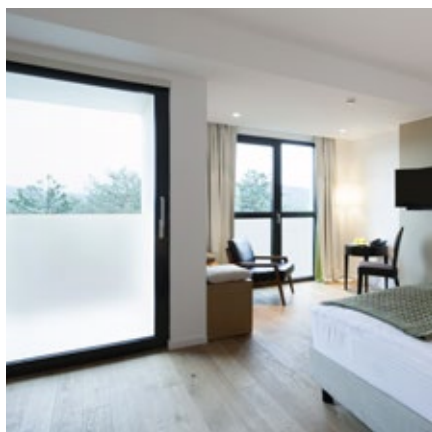




## MAT OPAL

*Mat Opal privacy films are designed to provide protection against the scrutiny of prying eyes. Whilst completely opalescent, the film filters out most natural light creating subtle ambient lighting conditions.*



Fire-resistance rating  
**M1**



Storage from -5°C to +40°C  
**3 YEARS**



REACH RoHS compliant  
**RESPECTED**

### TECHNICAL DATA

Data calculated based on film applied to clear glass 3 mm thick (\* on double glazing 4-16-4)

Ultraviolet transmission	5%
Visible light transmission	60%
Reflection of external visible light	27%
Reflection of internal visible light	20%
Total solar energy rejected	30%
Total solar energy rejected 2 *	30%
Solar ratio:	
Solar energy reflection	21%
Solar energy absorption	18%
Solar energy transmission	61%
Reduction in Solar Glare	27%
G-value	0.71
U-value	5.6
Shading coefficient	0.8
Installation type	Interior
Roll length	30,5 m
Film composition	PET
Thickness	60 µ
Colour from the outside	White

### MAINTENANCE

Use soapy water solution for cleaning. Do not clean for at least a month after installation and do not apply any type of stickers or adhesive on the film. For more information read our maintenance instructions and quality standards on [www.solfilmsgrossisten.se](http://www.solfilmsgrossisten.se)

### INSTALLATION ADVICE

Vertical installation and on standard glass surface \*

Clear single pane	✓
Tinted single pane	✓
Reflective tinted single pane	✓
Clear double pane	✓
Tinted double pane	✓
Reflective tinted double pane	✓
Gas-filled double pane - Low E	✓
STADIP EXT. clear double pane	✓
STADIP INT. clear double pane	✓

✓ Yes ! Caution ✗ Not

*Recommended*

*\* Recommendations provided on the basis of a glazed surface covering up to 2.5 m².*

### CONSTRUCTION

1. Frosted polyester with satin surface
2. Bonding adhesive
3. High optical quality polyester
4. PS adhesive, glass polymerization within 15 days
5. Protection release liner, disposable after installation

