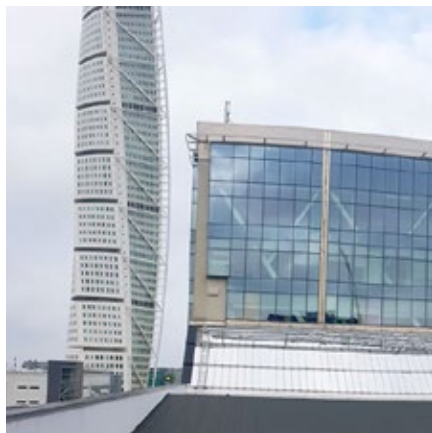




MULTIGLASS 50 INT

With a highly specific multi alloy metal composition, the Multiglass 50 INT film constitutes a significant barrier to solar absorption. It is highly effective in shielding against solar heat gain and further protects glazed surfaces from damage.



Fire-resistance rating
M1



Storage from -5°C to +40°C
3 YEARS



REACH RoHS compliant
RESPECTED

TECHNICAL DATA

Data calculated based on film applied to clear glass 3 mm thick (* on double glazing 4-16-4)

Ultraviolet transmission	1%
Visible light transmission	47%
Reflection of external visible light	29%
Reflection of internal visible light	28%
Total solar energy rejected	66%
Total solar energy rejected 2 *	63%
Solar ratio:	
Solar energy reflection	47%
Solar energy absorption	25%
Solar energy transmission	28%
Reduction in Solar Glare	52%
G-value	0.36
U-value	4.9
Rejected Infrared (760-2500 nm)	+/- 80%
Shading coefficient	0.4
Installation type	Interior
Roll length	30,5 m
Film composition	PET
Thickness	55 µ
Colour from the outside	Champagne

MAINTENANCE

Use soapy water solution for cleaning. Do not clean for at least a month after installation and do not apply any type of stickers or adhesive on the film. For more information read our maintenance instructions and quality standards on www.solfilmsgrossisten.se

INSTALLATION ADVICE

Vertical installation and on standard glass surface *

Clear single pane	✓
Tinted single pane	✓
Reflective tinted single pane	✓
Clear double pane	✓
Tinted double pane	✓
Reflective tinted double pane	✓
Gas-filled double pane - Low E	✓
STADIP EXT. clear double pane	✓
STADIP INT. clear double pane	!

✓ Yes ! Caution ✗ Not

Recommended

* Recommendations provided on the basis of a glazed surface covering up to 2.5 m², contact us for definitive details or to obtain a thermal chock analysis report.

CONSTRUCTION

1. Hard scratch resistant layer, for durability and ease of maintenance during window cleaning
2. High optical quality polyester, with anti IR metal particles deposit
3. Bonding adhesive
4. High optical quality polyester
5. PS adhesive, glass polymerization within 15 days
6. Protection release liner, disposable after installation

