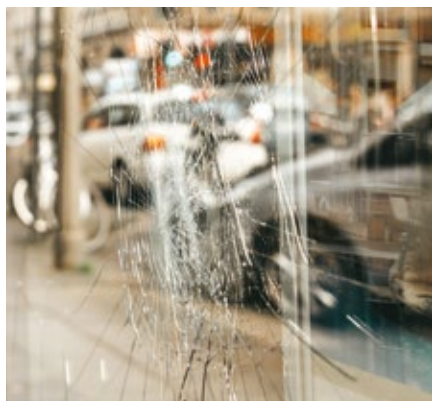




NEUTRAL 440 C

Neutral 440 C films are highly effective at reducing solar heat gain, whilst at the same time continuing to allow some natural light transmission. Designed to act as a security film, it provides protection by holding shattered glass in place in the event of an impact.



Fire-resistance rating
M1



Storage from -5°C to +40°C
3 YEARS



European Standard EN 12600
2B2



REACH RoHS compliant
RESPECTED

TECHNICAL DATA

Data calculated based on film applied to clear glass 3 mm thick (* on double glazing 4-16-4)

Ultraviolet transmission	1%
Visible light transmission	63%
Reflection of external visible light	11%
Reflection of internal visible light	10%
Total solar energy rejected	37%
Total solar energy rejected 2 *	34%
Solar ratio:	
Solar energy reflection	7%
Solar energy absorption	30%
Solar energy transmission	63%
Reduction in Solar Glare	43%
G-value	0.66
U-value	5.8
Shading coefficient	0.7
Installation type	Interior
Roll length	30,5 m
Film composition	PET
Thickness	125 µ
Colour from the outside	Neutral

MAINTENANCE

Use soapy water solution for cleaning. Do not clean for at least a month after installation and do not apply any type of stickers or adhesive on the film. For more information read our maintenance instructions and quality standards on www.solfilmsgrossisten.se

INSTALLATION ADVICE

Vertical installation and on standard glass surface *

Clear single pane	✓
Tinted single pane	!
Reflective tinted single pane	✓
Clear double pane	✓
Tinted double pane	!
Reflective tinted double pane	✓
Gas-filled double pane - Low E	!
STADIP EXT. clear double pane	!
STADIP INT. clear double pane	✗

✓ Yes ! Caution ✗ Not

Recommended

* Recommendations provided on the basis of a glazed surface covering up to 2.5 m², contact us for definitive details or to obtain a thermal shock analysis report.

CONSTRUCTION

1. Hard scratch resistant layer, for durability and ease of maintenance during window cleaning
2. High optical quality polyester
3. Bonding adhesive
4. Dyed polyester without optical distortion
5. Reinforced PS adhesive to accompany the elasticity of the film in case of impact, glass polymerization within 30 days
6. Protection release liner, disposable after installation

