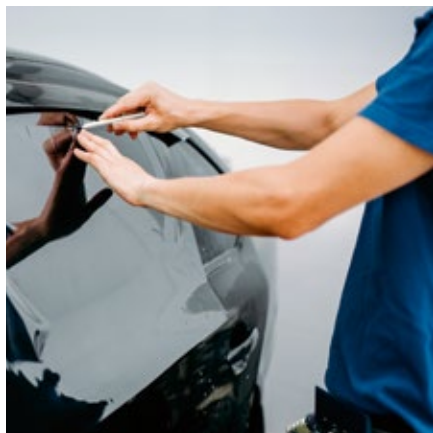




PANTHERA 05

With its well-appointed metallised design, the Panthera 05 automotive film combines discretion and privacy from prying eyes with technical efficiency in reflecting solar heat.



Fire-resistance rating
M1



Storage from -5°C to +40°C
3 YEARS



REACH RoHS compliant
RESPECTED

TECHNICAL DATA

Data calculated based on film applied to clear glass 3 mm thick (* on double glazing 4-16-4)

Ultraviolet transmission	1%
Visible light transmission	5%
Reflection of external visible light	7%
Reflection of internal visible light	7%
Total solar energy rejected	59%
Total solar energy rejected 2 *	57%
Solar ratio:	
Solar energy reflection	11%
Solar energy absorption	72%
Solar energy transmission	17%
Reduction in Solar Glare	94%
G-value	0.36
Installation type	Interior
Roll length	30,5 m
Film composition	PET
Thickness	60 µ
Colour from the outside	Black

MAINTENANCE

Use soapy water solution for cleaning. Do not clean for at least a month after installation and do not apply any type of stickers or adhesive on the film. For more information read our maintenance instructions and quality standards on www.solfilmsgrossisten.se

INSTALLATION ADVICE

Vertical installation and on standard glass surface *

Clear single pane	✓
Tinted single pane	✗
Reflective tinted single pane	✗
Clear double pane	✗
Tinted double pane	✗
Reflective tinted double pane	✗
Gas-filled double pane - Low E	✗
STADIP EXT. clear double pane	✗
STADIP INT. clear double pane	✗

✓ Yes ! Caution ✗ Not

Recommended

* Recommendations provided on the basis of a glazed surface covering up to 2.5 m², contact us for definitive details or to obtain a thermal chock analysis report.

CONSTRUCTION

1. Hard scratch resistant layer, for durability and ease of maintenance during window cleaning
2. Dyed polyester without optical distortion, with anti IR metal particles deposit
3. Bonding adhesive
4. Dyed polyester without optical distortion
5. PS adhesive, glass polymerization within 15 days
6. Protection release liner, disposable after installation

