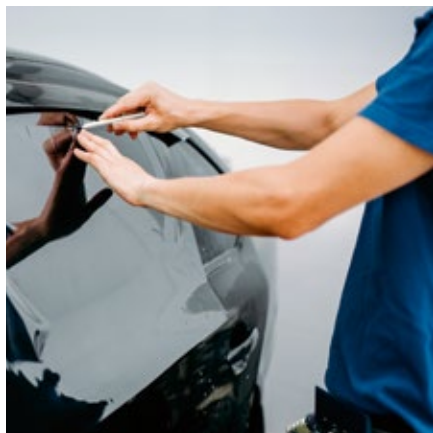




## PANTHERA 70

With its well-appointed design, the Panthera 70 automotive protects the interior of the vehicle while remaining transparent.



Fire-resistance rating  
**M1**



Storage from -5°C to +40°C  
**3 YEARS**



REACH RoHS compliant  
**RESPECTED**

### TECHNICAL DATA

Data calculated based on film applied to clear glass 3 mm thick (\* on double glazing 4-16-4)

Ultraviolet transmission	1%
Visible light transmission	70%
Reflection of external visible light	6%
Reflection of internal visible light	5%
Total solar energy rejected	32%
Total solar energy rejected 2 *	29%
Solar ratio:	
Solar energy reflection	8%
Solar energy absorption	33%
Solar energy transmission	59%
Reduction in Solar Glare	29%
G-value	NC
Installation type	Interior
Roll length	30,5 m
Film composition	PET
Thickness	55 µ
Colour from the outside	Black

### MAINTENANCE

Use soapy water solution for cleaning. Do not clean for at least a month after installation and do not apply any type of stickers or adhesive on the film. For more information read our maintenance instructions and quality standards on [www.solfilmsgrossisten.se](http://www.solfilmsgrossisten.se)

### INSTALLATION ADVICE

Vertical installation and on standard glass surface \*

Clear single pane	✓
Tinted single pane	✓
Reflective tinted single pane	✓
Clear double pane	✓
Tinted double pane	!
Reflective tinted double pane	✓
Gas-filled double pane - Low E	✓
STADIP EXT. clear double pane	✓
STADIP INT. clear double pane	!

✓ Yes ! Caution ✗ Not

*Recommended*

\* Recommendations provided on the basis of a glazed surface covering up to 2.5 m², contact us for definitive details or to obtain a thermal chock analysis report.

### CONSTRUCTION

1. Dyed polyester without optical distortion
2. Bonding adhesive
3. Dyed polyester without optical distortion
4. PS adhesive, glass polymerization within 15 days
5. Protection release liner, disposable after installation

