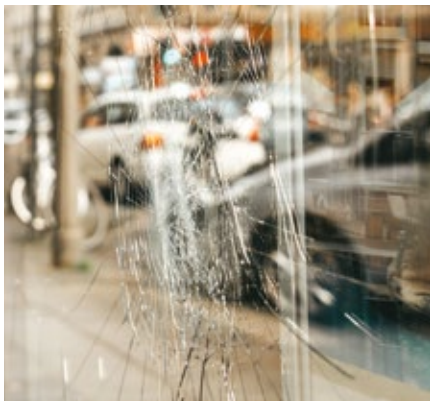




SILVER 470 C

Silver 470 C films are highly effective at reducing solar heat gain, whilst at the same time continuing to allow most natural light to pass through. Solar glare is greatly diminished and its one-way mirror aspect guarantees privacy from prying eyes. A highly resilient film, it helps to secure your windows by ensuring that the glass does not shatter in the event of an impact or explosion.



Fire-resistance rating
M1



Storage from -5°C to +40°C
3 YEARS



European Standard EN 12600
2B2



REACH RoHS compliant
RESPECTED

TECHNICAL DATA

Data calculated based on film applied to clear glass 3 mm thick (* on double glazing 4-16-4)

Ultraviolet transmission	1%
Visible light transmission	30%
Reflection of external visible light	44%
Reflection of internal visible light	44%
Total solar energy rejected	68%
Total solar energy rejected 2 *	65%
Solar ratio:	
Solar energy reflection	43%
Solar energy absorption	35%
Solar energy transmission	22%
Reduction in Solar Glare	68%
G-value	0.32
U-value	5.1
Shading coefficient	0.3
Installation type	Interior
Roll length	30,5 m
Film composition	PET
Thickness	125 µ
Colour from the outside	Silver medium

MAINTENANCE

Use soapy water solution for cleaning. Do not clean for at least a month after installation and do not apply any type of stickers or adhesive on the film. For more information read our maintenance instructions and quality standards on www.solfilmsgrossisten.se

INSTALLATION ADVICE

Vertical installation and on standard glass surface *

Clear single pane	✓
Tinted single pane	✓
Reflective tinted single pane	✓
Clear double pane	✓
Tinted double pane	!
Reflective tinted double pane	✓
Gas-filled double pane - Low E	!
STADIP EXT. clear double pane	✓
STADIP INT. clear double pane	!

✓ Yes ! Caution ✗ Not

Recommended

* Recommendations provided on the basis of a glazed surface covering up to 2.5 m².

CONSTRUCTION

1. Hard scratch resistant layer, for durability and ease of maintenance during window cleaning
2. High optical quality polyester, with anti IR metal particles deposit
3. Bonding adhesive
4. High optical quality polyester
5. Reinforced PS adhesive to accompany the elasticity of the film in case of impact, glass polymerization within 30 days
6. Protection release liner, disposable after installation

