



RS 20 Statisch

Sun protection privacy film Internal

SKU: RZ1524

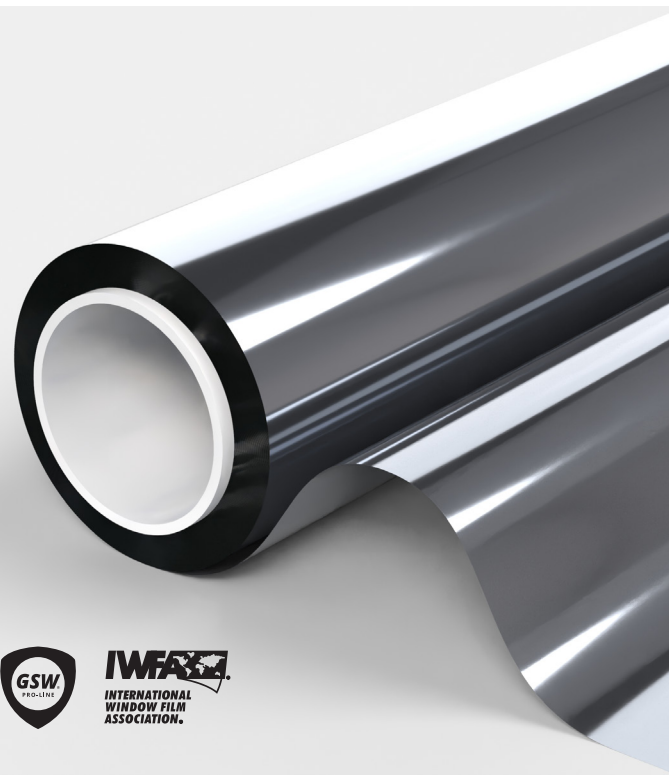
GSW® RS 20 Static solar heat is kept to a minimum and at the same time a maximum of natural light incidence is guaranteed. Light reflection is significantly reduced and because the film functions as a one-way mirror, you have no onlookers and the exterior of a house or building gets a modern look.

Features:

- Blocks infrared High.
- Creates an attractive appearance on the facade.
- Ideal against prying eyes during the day.
- Glass gets a longer lifespan.
- Silver glass look.
- View from inside to outside.

PRODUCT PERFORMANCE

UV protection	82%
Light transmission	24%
Reflection of visible light outside	60%
Reflection of visible light inside	60%
Reflection of solar energy	55%
Absorption of solar energy	33%
Transmission of solar energy	12%
Reduction of reflection	83%
Sun transmission	21%
Rejected solar energy single glazing	75%
Rejected solar energy double glazing	79%
G-value	0.2
U-value single	5.1
U-value double	
Shade coefficient	0.22



SOLAR

82%



UV

75%



24%



LTA

33%



ABS

Warranty

years

Installation

Inside

Foil colour

Silver

PROFESSIONAL WINDOWFILM
VISIT GSWFILM.COM

Contact sales +31 (0)299-323122 info@gswfilm.com

RS 20 Statisch

Sun protection privacy film Internal

SKU: RZ1524

GLASS TYPES	SUITABLE
Clear single pane	Yes
Tinted single pane	Yes
Reflective tinted single pane	Yes
Clear double pane	Yes
Tinted double pane	No
Reflective tinted double pane	No
Gas-filled double pane - Low E	No
Stadip ext. clear double pane	No
Stadip int. clear double pane	No
Triple glazed	No
Acrylic 4 mm	Yes
Polycarbonate 4 mm	No

*Recommendations based on a glass surface of max. 2.5 m². Contact us for further information.

U-value

The lower the U-value, the better the thermal resistance of the foil, with less heat being lost to the outside.

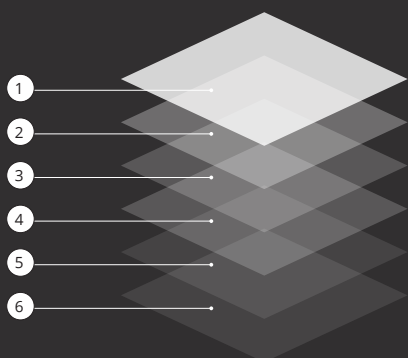
PRODUCT FEATURES	
Width(s)	152 cm
Length(s)	20 meters
Film thickness	100 µ
Material	PET + PVC
Storage period	3 years
Storage temperature	-5 °C to '+40 °C
Fire class	EN13501-1
Manufacturer	

Installation

Install the film with water and green Fairy dishwashing liquid. Under no circumstances use chemicals!

Maintenance

Do not clean the window film or attach stickers or other adhesives for at least 1 month after installation. The film can then be cleaned with water and green Fairy dishwashing liquid. Be careful not to use chemicals!



1. Hard scratch-resistant layer for long life and ease of maintenance when cleaning the windows.
2. Polyester / PVC with anti IR metal particles.
3. Static.
4. Protective backing, disposable after installation.

SOLAR

PROFESSIONAL WINDOWFILM
VISIT **GSWFILM.COM**

GSW accepts no liability for administrative errors and reserves the right to change information without prior notice. This document does not create, specify, modify or replace any new or existing contractual obligations agreed between GSW and the user. Data calculated on the basis of film on clear glass of 3 mm thickness (*on double glass 4-16-4). GSW® is a registered trademark of Glass Solution Windowfilm B.V. ©2024 GSW

Glass Solution Windowfilm B.V. Schepnetstraat 3a, 1446 AL Purmerend +31 (0)299-323 122 info@gswfilm.com



FREE SAMPLE