

FROM THE FOUNDER OF THE #VIKISEWS BRAND



Back in 2016, when I was working on my first set of sewing instructions, I was trying to write them in such a way that even a complete beginner could easily understand and use them to create their very first garment. These instructions laid the foundation for the Vikisews brand, its vision and its mission. I wanted to create modern patterns with the most detailed and clear instructions.

Now, with each new collection we are constantly improving our instructions, amending them and adding more relevant details. By the time the final product reaches you, our drafters, correctors, and editors would have spent weeks perfecting every word and every photograph. If you compile a few of our instructions together, you will get a sewing manual that will assist you in sewing all kinds of garments at any difficulty level.

And I would be very happy if these instructions helped you to turn your hobby into a lifelong passion... Enjoy the process! Create your ultimate dream wardrobe! Wear your garments proudly for years to come!

If you have any questions, please contact us at info@vikisews.com - we are always there to help.



MANUELA PATTERN DESCRIPTION

Manuela is a semi-fitted dress with an accentuated waist. The dress has a waist seam and shaped bands along the front neckline which are joined together with a hook-and-eye fastener. The wrap skirt features curved edges at the front. There are inverted box pleats on the front and back bodice, as well as on the front and back skirt. The dress has long, flared raglan sleeves. There is a pleat at the bottom of the front sleeve secured with a line of stitching. The dress fastens with sew-on snaps at the waist seam, as well as with a narrow tie belt. Manuela is below mid-calf length.



IMPORTANT!

The contents of this pattern are copyright protected and belong exclusively to VikiSews. You may use VikiSews patterns for personal use. It is prohibited to share VikiSews patterns and instructions with third parties, as well as to publish patterns and instructions online for public access. According to part 1 of clause 1252 and clause 1301 of the Civil Code of the Russian Federation, failure to comply with the mentioned rules constitutes a breach of the legislation in force in the field of copyright and entails liability of the violator. Illegal use or distribution will be prosecuted in accordance with legislation.

You may use VikiSews patterns for commercial use, to sew custom-made garments and/or create fashion collections, on the condition that the patterns are solely used in a manufacturing setting and are not further shared with individuals.

TOTAL EASE ALLOWANCE

	Bust ease	Waistline ease	Hipline ease	Upper arm ease
cm	19.3–23.1	2.9–3.6	33–33.8	13.8–15.6
inches	7 5/8–9 1/8	1 1/8–1 3/8	13–13 1/4	5 3/8–6 1/8

GARMENT LENGTH, SLEEVE LENGTH

Height, cm	Back length from waist down, cm	Sleeve length, cm
1 (154-160)	79	65
2 (162-168)	82	67
3 (170-176)	85	69
4 (178-184)	88	71

Height, ft	Back length from waist down, in	Sleeve length, in
1 (5'1" - 5'3")	31 1/8	25 5/8
2 (5'4" - 5'6")	32 1/4	26 3/8
3 (5'7" - 5'9")	33 1/2	27 1/8
4 (5'10" - 6'1")	34 5/8	28

SUGGESTED FABRIC

To sew this dress, choose dress-weight fabrics with the following properties:

- medium-weight, pliable, soft, non-stretch or low-stretch, opaque
- the fabric content can include natural (silk, cotton, linen), artificial (viscose), blends (cotton + silk, silk + viscose, etc.), and synthetic fibers (polyester, polyester + elastane)
- the following fabrics are recommended: dress-weight satin, crepe, man-made silk, cupro, silk velvet.

Attention! We do not recommend very stretchy knit materials (jersey fabric) and lightweight sheer fabrics (chiffon, stretch lace).

The dress in the photo is made in man-made silk. This fabric is medium-weight, pliable, soft, and has little stretch. The fiber content is 100% polyester.

Main fabric, 150 cm wide, to be cut in one direction on a single layer, in meters:

Height, cm	Size									
	34	36	38	40	42	44	46	48	50	52
1 (154-160)	2.05	2.1	2.2	2.2	2.5	2.5	2.5	2.5	2.5	2.5
2 (162-168)	2.15	2.15	2.25	2.25	2.55	2.55	2.55	2.55	2.55	2.55
3 (170-176)	2.2	2.2	2.25	2.36	2.65	2.65	2.65	2.65	2.65	2.65
4 (178-184)	2.3	2.35	2.4	2.4	2.75	2.75	2.75	2.75	2.75	2.75

Main fabric, 60" wide, to be cut in one direction on a single layer, in yards:

Height, ft	Size									
	34	36	38	40	42	44	46	48	50	52
1 (5'1" - 5'3")	2 1/4	2 1/4	2 3/8	2 3/8	2 3/4	2 3/4	2 3/4	2 3/4	2 3/4	2 3/4
2 (5'4" - 5'6")	2 3/8	2 3/8	2 1/2	2 1/2	2 3/4	2 3/4	2 3/4	2 3/4	2 3/4	2 3/4
3 (5'7" - 5'9")	2 3/8	2 3/8	2 1/2	2 5/8	2 7/8	2 7/8	2 7/8	2 7/8	2 7/8	2 7/8
4 (5'10" - 6'1")	2 1/2	2 5/8	2 5/8	2 5/8	3	3	3	3	3	3

IMPORTANT! When purchasing fabric, please account for shrinkage and buy 5% more than required.

2. Lightweight fusible interfacing (either knit or woven), 140 cm (55") wide, for all sizes in all heights - 0.45 m (1/2 yd)
3. Two snaps 0.7–1 cm (1/4–3/8") in diameter
4. One pair of concealed hook-and-eye fastener
5. Matching thread, 5 spools (1 spool for the sewing machine and 4 spools for the overlocker)

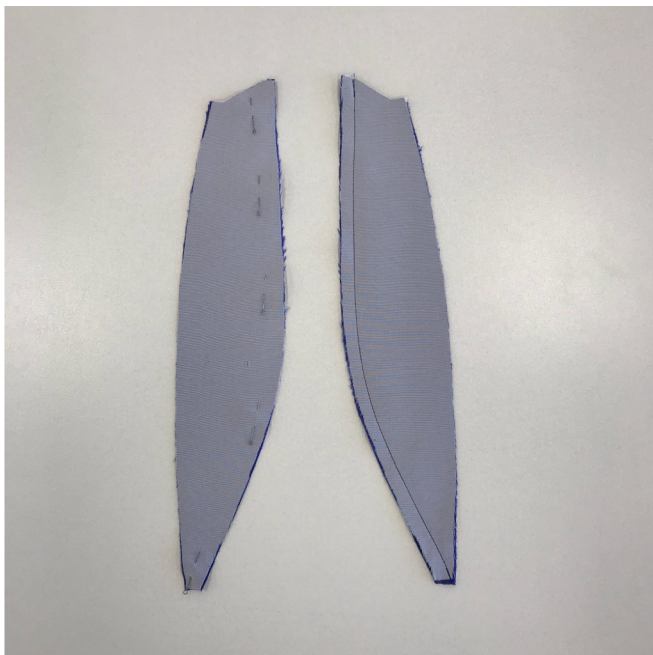
Verify the length of the garment.

Pay attention if the garment has fit issues due to individual body features (for instance, in case of an asymmetrical figure: asymmetric shoulder height, etc.).

Ensure there is no tension and no stress folds in the area where snaps will be sewn on.

Verify the volume of the garment; it should be comfortable, non-restricting.

After the test fit, alter the pattern pieces symmetrically on both sides of the garment, and if necessary, baste the garment again for a new test fit.



Join and align along the edges the front band pieces, right sides together. Match the notches and pin. Machine-stitch along the curvier side of the front band pieces, backstitching in the beginning and end. Press flat.



Turn the seam allowances toward either side and machine-stitch at 1–2 mm from the seam. Repeat to the other pieced front band, ensuring the two pieces are symmetrical. The half of the front band piece that has the stitching line visible is considered as the wrong side (hereinafter, the bottom side – the one closer to the body).

Trim the seam allowance on the bottom side close to the stitching line.