

FROM THE FOUNDER OF THE #VIKISEWS BRAND

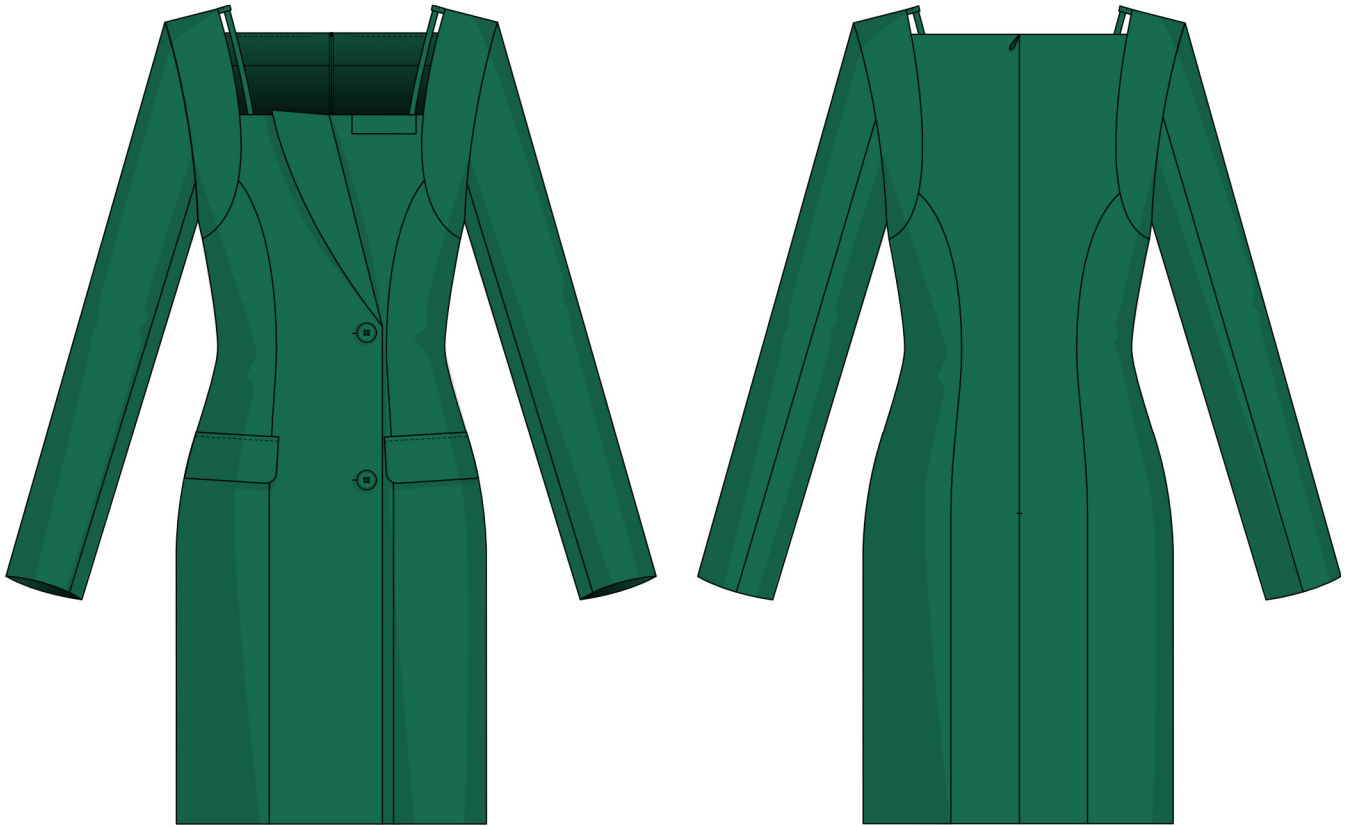


Back in 2016, when I was working on my first set of sewing instructions, I was trying to write them in such a way that even a complete beginner could easily understand and use them to create their very first garment. These instructions laid the foundation for the Vikisews brand, its vision and its mission. I wanted to create modern patterns with the most detailed and clear instructions.

Now, with each new collection we are constantly improving our instructions, amending them and adding more relevant details. By the time the final product reaches you, our drafters, correctors, and editors would have spent weeks perfecting every word and every photograph. If you compile a few of our instructions together, you will get a sewing manual that will assist you in sewing all kinds of garments at any difficulty level.

And I would be very happy if these instructions helped you to turn your hobby into a lifelong passion... Enjoy the process! Create your ultimate dream wardrobe! Wear your garments proudly for years to come!

If you have any questions, please contact us at info@vikisews.com - we are always there to help.



CHARLIZE PATTERN DESCRIPTION

Charlize is a close-fitting dress with a sheath silhouette due to front and back princess seams. The front and back feature curved band pieces along the armholes. There are thin straps along the band pieces, attached to the front and back necklines and secured in the shoulder seams. The front pieces feature flaps and an asymmetric lapel. Charlize has a faux double-breasted fastening with buttons and buttonholes. The front and back pieces are finished with a free-hanging lining. The dress features long, set-in, two-piece, fitted sleeves, and is above-knee length.



IMPORTANT!

The contents of this pattern are copyright protected and belong exclusively to VikiSews. You may use VikiSews patterns for personal use. It is prohibited to share VikiSews patterns and instructions with third parties, as well as to publish patterns and instructions online for public access. According to part 1 of clause 1252 and clause 1301 of the Civil Code of the Russian Federation, failure to comply with the mentioned rules constitutes a breach of the legislation in force in the field of copyright and entails liability of the violator. Illegal use or distribution will be prosecuted in accordance with legislation.

You may use VikiSews patterns for commercial use, to sew custom-made garments and/or create fashion collections, on the condition that the patterns are solely used in a manufacturing setting and are not further shared with individuals.

TOTAL EASE ALLOWANCE

	Bust ease	Waistline ease	Hipline ease	Upper arm ease
cm	8.8–9.4	11.1–11.2	9	7
inches	3 1/2–3 3/4	4 3/8	3 1/2	2 3/4

GARMENT LENGTH, SLEEVE LENGTH

Height, cm	Garment length from waist down (different for each size), cm	Sleeve length, cm
1 (154–160)	47	59–60
2 (162–168)	49	61.1–62.1
3 (170–176)	51	63–64
4 (178–184)	53	65–65.9
Height, ft	Garment length from waist down (different for each size), in	Sleeve length, in
1 (5'1"–5'3")	18 1/2	23 1/4–23 5/8
2 (5'4"–5'6")	19 1/4	24–24 1/2
3 (5'7"–5'9")	20 1/8	24 3/4–25 1/4
4 (5'10"–6'1")	20 7/8	25 5/8–26

SUGGESTED FABRIC

To sew this dress, choose woven fabrics with the following properties:

- Medium weight, easily pressed and steamed, breathable, soft, non-stretch or with very little stretch, opaque
- The fiber content can include natural fibers (wool, silk, cotton), artificial (viscose), blends (wool + silk, wool + polyester, wool + cotton, etc.), and synthetic (polyester, polyester + viscose)
- The following fabrics are recommended: dress-weight wool, gabardine, wool crepe.

Attention! We do not recommend stretchy knit materials and lightweight sheer fabrics (chiffon, organza, stretch lace).

For the lining, we recommend artificial fibers (viscose), blends (viscose + elastane, viscose + polyester), or synthetic fibers (polyester, polyester + elastane).

The dress in the photo is made of suiting fabric. This material is medium weight, soft, with very little stretch and presses well. The fiber content is a blend: 65% polyester + 35% viscose. The lining is 100% viscose.

3. From interfacing:

- left front facing – cut 1
- right front facing – cut 1
- front band – cut 2
- back band – cut 2
- back facing – cut 2
- flap – cut 2
- welt – cut ½ of the piece width

***IMPORTANT!** Don't forget to transfer all pattern markings and notches onto the fabric.*

Additionally, cut the following pieces from interfacing:

- two strips, 3 x 20 cm (1 1/8 x 7 7/8"), to interface the flap stitching line
- one strip, 3 x 10 cm (1 1/8 x 3 7/8"), to interface the welt stitching line.

The grainline of the interfacing strips should be along the longer side (along the fusible fabric selvedge).

SEAM ALLOWANCES

All pattern pieces include seam allowances as follows:

- garment hem allowance – 4 cm (1 5/8")
- garment lining hem allowance – 2 cm (3/4")
- sleeve hem allowance – 2 cm (3/4")
- center back seam allowance – 1.5 cm (5/8")
- all other edges – 1 cm (3/8")

Take this into account when laying out pattern pieces on the fabric.

What to look for during fitting?

Left and right garment pieces should look the same.

Verify the balance of the garment – the side seams, back and front center lines should be vertical, the shoulder seams should lie on the natural shoulder line.

The front edges should hang straight down without overlapping or spreading apart.

The garment hemline should be parallel to the floor.

Evaluate the side view of the front and back of the garment (look at yourself sideways in the mirror). The front and back should not sag or ride up. There shouldn't be any horizontal wrinkles across the back or any tension across the shoulder blades and shoulders.

Evaluate the front or back view of the side seams. The garment sides should not sag or ride up.

Evaluate the flap, welt and strap sizes and placements. Cut small pieces from the muslin fabric and pin to the garment.

Verify the garment length.

Evaluate the lapel shape. The lapel should fit closely to the body along the roll line.

Check for fit issues associated with individual features of the body (for example, an asymmetrical figure with shoulders at different levels, etc.).

The fabric should not stretch, form diagonal folds or creases at the places where the buttons will be attached.

Verify the garment volume, there should be enough ease and it should feel comfortable.

After the fitting, mark changes symmetrically to both sides of the garment; if needed, baste once more and do another fitting.



Finish the center back seam allowances on the overlocker.

Overlock with the right side of the garment facing up.