

I M P O R T A N T !

The contents of this pattern are copyright protected and belong exclusively to VikiSews:

- **you may use VikiSews patterns for personal use.** It is prohibited to share VikiSews patterns and instructions with third parties, as well as to publish patterns and instructions online for public access.
- **You may use VikiSews patterns for commercial use,** to sew custom-made garments and/or create garment collections, on the condition that the patterns are solely used in a manufacturing setting and are not further shared with individuals.

A D E L I N E

#vikisews

PATTERN DESCRIPTION

Adeline is a pair of semi-fitted trousers with a straight silhouette, tapered towards the hem. The front features two soft pleats on each side at the waistline directed towards the center front, the back has waist darts, and both the front and back have pressed creases. Adeline has a fly front, the side seams have inseam pockets, the waistband has topstitched belt loops, its top edge sits on the natural waistline and it fastens with a hook and eye. Adeline is below ankle length.



TOTAL EASE ALLOWANCE

Waistline ease, cm	Hipline ease, cm
5	20,4

GARMENT LENGTH

Height, cm	Garment length, cm
1 (154-160)	102
2 (162-168)	106
3 (170-176)	110
4 (178-184)	114

SUGGESTED FABRIC

To sew these trousers, choose thin, woven dress and suiting fabrics with the following properties:

- Medium weight, breathable, soft, non-stretch or with very little stretch, opaque
- The fiber content can include natural fibers (wool, silk, cotton, linen), artificial (viscose), blends (wool + silk, wool + polyester, cotton + viscose, etc), and synthetic (polyester, polyester + elastane)
- The following fabrics are recommended: dress-weight wool or denim, gabardine.

Attention! We do not recommend stretchy knit materials or lightweight sheer materials (chiffon, organza, stretch lace).

The trousers on the photo are made in a blend of viscose with polyester. This fabric is medium weight, flexible, soft and has very little stretch. The pocket bags are made with 100% viscose lining.

FABRIC AND NOTIONS REQUIREMENTS

1. Main fabric, 140cm wide, with nap, in meters:

Height, cm	Size									
	34	36	38	40	42	44	46	48	50	52
1 (154-160)	1,68	1,79	1,79	1,79	1,8	1,81	1,84	1,91	1,98	2,07
2 (162-168)	1,71	1,84	1,84	1,84	1,85	1,87	1,88	1,94	2,03	2,12
3 (170-176)	1,75	1,89	1,89	1,89	1,89	1,9	1,92	1,98	2,07	2,18
4 (178-184)	1,79	1,95	1,95	1,95	1,95	1,95	1,97	2,06	2,12	2,22

Main fabric, 140cm wide, without nap, in meters:

Height, cm	Size									
	34	36	38	40	42	44	46	48	50	52
1 (154-160)	1,45	1,52	1,59	1,65	1,71	1,77	1,83	1,9	2,01	2,11
2 (162-168)	1,48	1,56	1,62	1,69	1,75	1,8	1,87	1,93	2,03	2,15
3 (170-176)	1,53	1,61	1,68	1,74	1,8	1,87	1,92	1,99	2,07	2,22
4 (178-184)	1,57	1,65	1,72	1,79	1,84	1,91	1,96	2,02	2,11	2,28

2. Lining material, 140cm wide, with nap, in meters:

34	36	38	40	42	44	46	48	50	52
0,32	0,32	0,33	0,33	0,34	0,35	0,35	0,36	0,36	0,37

3. Woven fusible interfacing, 140cm wide, in meters:

34	36	38	40	42	44	46	48	50	52
0,76	0,8	0,84	0,88	0,92	0,96	1	1,04	1,08	1,12

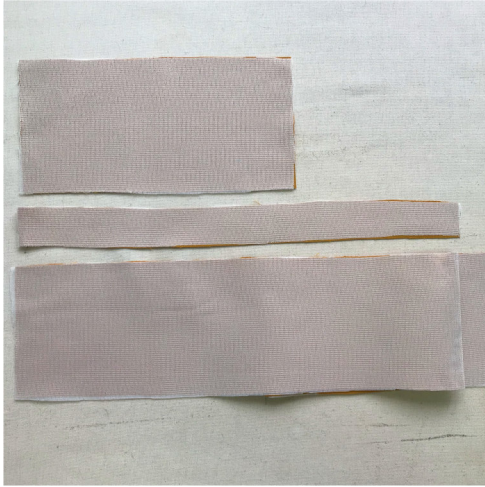
IMPORTANT!

When purchasing fabric, please account for shrinkage and buy 5% more than required.

- One pant zipper 20cm in length for all sizes and heights
- One sew-on hook and eye
- Matching thread - 5 spools (1 spool for the sewing machine and 4 spools for the overlocker)

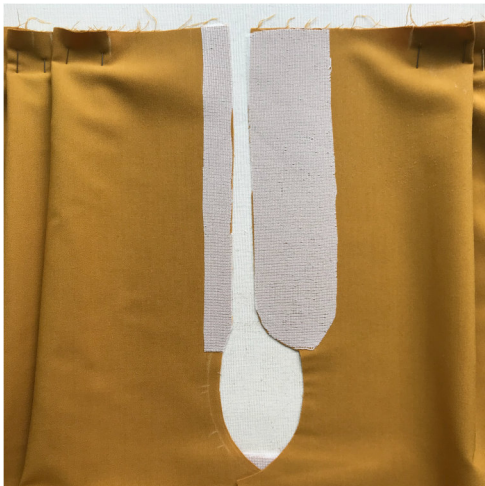
Fully interface the following pieces:

- Waistband – 1 piece
- Belt loop – 1 piece
- Fly shield – 1 piece



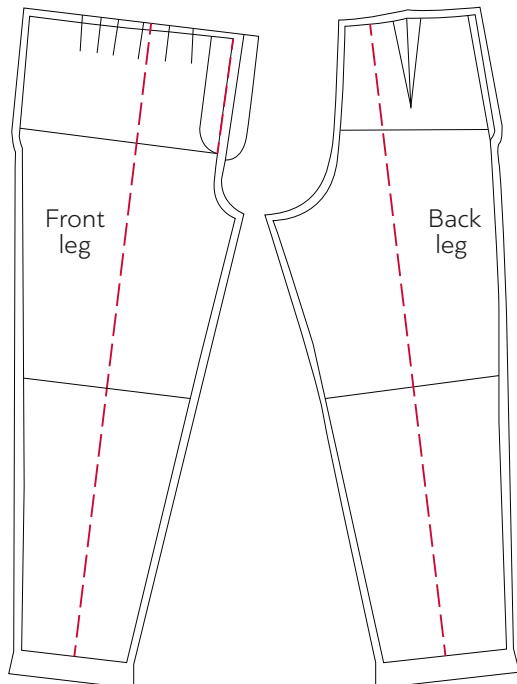
Prior to interfacing the pieces, we recommend testing the interfacing and/or seam tape interfacing on a scrap piece of the main fabric. Also check your iron settings: what temperature suits your fabric, can the interfacing be applied with steam, as well as the time needed to hold the iron over the interfacing for perfect adhesion.

To interface, put the gluey side of the interfacing (the side that feels rough to the touch) on top of the wrong side of the fabric piece (or a section thereof) and press with the iron. Do not iron the piece, but instead press it section by section, holding it down with the iron a few seconds until that section is adhered and then pressing down the next section. You may use a cotton pressing cloth to protect your iron sole. Once the interfacing process complete, leave the piece on a hard flat surface for 15 minutes to cool down.



Partially interface the following pieces:

- Fly extension – 1 piece
- Zipper insertion area on the left front side (with a 2cm wide strip of interfacing cut along the selvedge)
- Pocket openings on the front legs (indicated on pattern pieces)



On the front and back legs, hand sew a running stitch along the center line (for the creases), also baste along the fly extension (center front).

The basting should be done in a light-coloured thread, in order to avoid bleeding onto the main material during pressing and steaming.