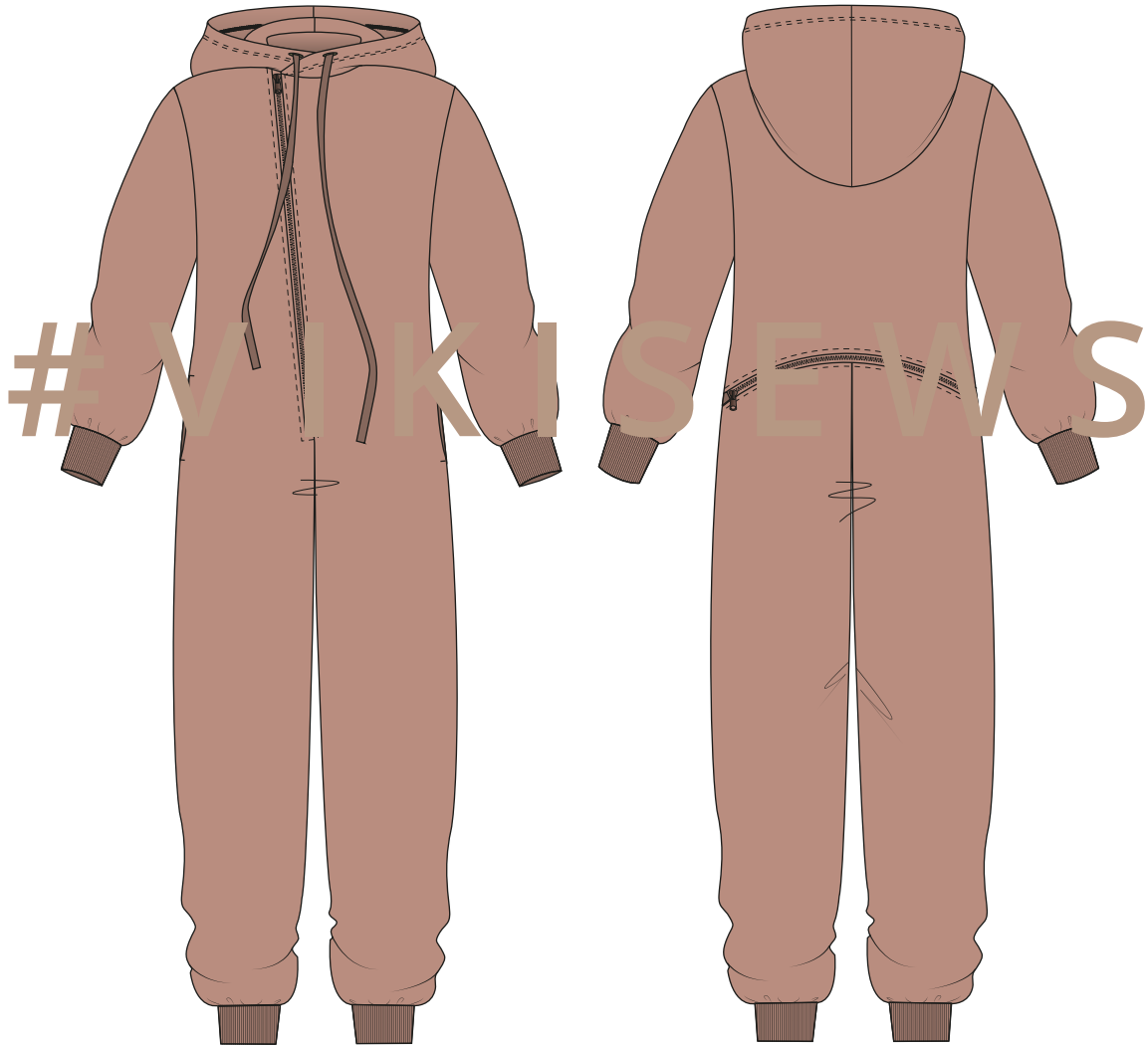


MAX

(for boys)



3-14 years
HEIGHT 98-158 cm
(38.5"-62.25")

DIFFICULTY



INTERMEDIATE

I M P O R T A N T !

The contents of this pattern are copyright protected and belong exclusively to VikiSews. You may use VikiSews patterns for personal use. It is prohibited to share VikiSews patterns and instructions with third parties, as well as to publish patterns and instructions online for public access. According to part 1 of clause 1252 and clause 1301 of the Civil Code of the Russian Federation, failure to comply with the mentioned rules constitutes a breach of the legislation in force in the field of copyright and entails liability of the violator. Illegal use or distribution will be prosecuted in accordance with legislation.

You may use VikiSews patterns for commercial use, to sew custom-made garments and/or create fashion collections, on the condition that the patterns are solely used in a manufacturing setting and are not further shared with individuals.

M A X

#vikisews

PATTERN DESCRIPTION

Max is a loose-fitting children's jumpsuit. It closes with an asymmetric front zipper that extends down to the hip level and is shifted toward the right side at the neckline. The jumpsuit has side seam pockets. The back features a horizontal seam between the waist and hip levels. There is a functional zipper in the curved seam. The jumpsuit has a high rise. The drop-shoulder set-in sleeves are long and finished with cuffs. The edges of the voluminous hood overlap at the front when the garment is closed. The pant legs are finished with cuffs. The jumpsuit is below-ankle length.



TOTAL EASE ALLOWANCE

	Chest ease	Waistline ease	Hipline ease	Upper arm ease
cm	20.5	21.7-28.7	14.9-15.2	12.5
inches	8 1/8	8 1/2-11 1/4	5 7/8-6	4 7/8

GARMENT LENGTH, SLEEVE LENGTH

Height, cm	Side seam length from waist down including cuff, cm	Sleeve length including shoulder width and cuff, cm
98	57.1	45.3-45.8
104	61.6	47.7-48.3
110	66	50.8-51.3
116	70.6	53.2-53.8
122	75	56.3-56.8
128	80.5	58.8-59.1
134	84.8	61.8-62.1
140	89.2	64.2-64.9
146	93.6	66.9-67.6
152	99.3	69.7-70.6
158	103.3	72.6-76

Height, in	Side seam length from waist down including cuff, in	Sleeve length including shoulder width and cuff, in
38.5	22 1/2	17 7/8-18
41	24 1/4	18 3/4-19
43.25	26	20-20 1/4
45.5	27 3/4	21-21 1/8
48	29 1/2	22 1/8-22 3/8
50.5	31 3/4	23 1/8-23 1/4
52.75	33 3/8	24 3/8-24 1/2
55	35 1/8	25 1/4-25 1/2
57.5	36 7/8	26 3/8-26 5/8
60	39 1/8	27 1/2-27 3/4
62.25	40 5/8	28 5/8-29 7/8

3. Ribbing for cuffs - 0.15m (1/8yd)
4. Matching thread - 5 spools (1 spool for the sewing machine + 4 spools for the overlocker).
5. Twill tape:

Height, cm	Length, meters
98-104	1.95
110-116	2.0
122-128	2.05
134-140	2.15
146-158	2.25

Height, in	Length, yards
38.5-41	2 1/8
43.25-45.5	2 1/8
48-50.5	2 1/4
52.75-55	2 3/8
57.5-62.25	2 1/2

IMPORTANT!

When purchasing fabric, please account for shrinkage and buy 5% more than required.

TOOLS AND EQUIPMENT

- sewing machine for construction
- overlocker for construction and finishing seam allowances. This can be replaced with a stretch overlock stitch or a zigzag stitch on the sewing machine (overlock or zigzag stitch width 2–3mm, stitch length 2.5mm)
- coverstitch or coverlock machine for finishing the hood facing. This can be replaced with a twin needle on a regular sewing machine that can do a zigzag stitch.

Important! We recommend using specialty needles when working with knit fabrics (for example, STRETCH, SUPER STRETCH, JERSEY, etc.). These are ballpoint needles, so they part the threads of the fabric you are stitching rather than piercing them.

Assemble the garment using one of these two methods:

- use a long machine stitch (4–5mm stitch length)
- baste by hand (approximately 1cm (3/8") stitch length). If after basting one of the pieces ends up longer than the other, don't rush to trim the longer piece or stretch the shorter one. First make sure that the notches match, lay out the pieces on a flat surface, and try basting again. If the pieces still don't match because they've stretched or there has been a cutting mistake, you can always trim the pieces after the fitting during the construction of the garment.

After assembling the garment, press it lightly and press the seam allowances either to one side or open.

What to look for during fitting? The right and left sides of the garment should look identical.

Check the garment balance - side seams should be vertical, center back and front lines positioned correctly, shoulder seam aligned with the natural shoulder line. Check the rise height. Check the fit of the sleeve - the sleeve should lie smoothly, without folds or wrinkles. After the fitting, make the necessary adjustments to both sides of the garment and do another baste fitting if necessary.



Using chalk, mark the position of the buttonholes on the right side of the hood pieces (transfer the position from the pattern).

Working from the right side, use a buttonhole foot to machine-stitch the buttonholes according to the markings.

Cut the buttonholes open. Insert a pin on each side of the buttonhole to protect the edges from being cut. Steam press the finished buttonholes.



Place the two hood pieces right sides together, align the center seam, pin, baste and stitch on the overlocker from either side.

This seam and all similar seams throughout the instructions are done on a 4-thread overlocker. It can be replaced with a stretch stitch or zigzag on a sewing machine.