

# ASPEN

(for boys)

---



3-14 years  
HEIGHT 98-158 cm  
(38.5"-62.25")

---

DIFFICULTY



ADVANCED

# I M P O R T A N T !

The contents of this pattern are copyright protected and belong exclusively to VikiSews. You may use VikiSews patterns for personal use. It is prohibited to share VikiSews patterns and instructions with third parties, as well as to publish patterns and instructions online for public access. According to part 1 of clause 1252 and clause 1301 of the Civil Code of the Russian Federation, failure to comply with the mentioned rules constitutes a breach of the legislation in force in the field of copyright and entails liability of the violator. Illegal use or distribution will be prosecuted in accordance with legislation.

You may use VikiSews patterns for commercial use, to sew custom-made garments and/or create fashion collections, on the condition that the patterns are solely used in a manufacturing setting and are not further shared with individuals.

## A S P E N

#vikisews

### PATTERN DESCRIPTION

*Aspen is an oversized trench coat with a straight silhouette. The front features a storm flap on the right side and single welt pockets. The back also has a storm flap with an inverted box pleat, held in place with a removable two-button tab. The raglan sleeves feature an epaulet along the top which passes through a belt loop and fastens with a button and buttonhole. The bottom of the sleeves also has a removable button tab held with belt loops. Aspen has a turn-down collar with a stand and a removable tie belt held with back belt loops. The double-breasted trench fastens with buttons and buttonholes and has a fully closed lining. All the small pieces as well as the collar, flaps, front edge, top sleeve seam, and garment and sleeve hems feature decorative topstitching. Aspen is below-the-knee length.*



## TOTAL EASE ALLOWANCE

	Chest ease	Waistline ease	Hipline ease	Upper arm ease
cm	26-35	30-43	21-30	19.3-22
inches	10 1/4-13 3/4	11 3/4-16 7/8	8 1/4-11 3/4	7 5/8-8 5/8

## GARMENT LENGTH, SLEEVE LENGTH

Height, cm	Center back length, cm	Sleeve length including shoulder width, cm
98	59	43.4-43.9
104	63	45.9-46.4
110	68	48.9-49.4
116	73	51.6-52.1
122	77	57.6-58.1
128	80	60-60.7
134	83	62.7-63.3
140	86	65.4-66.1
146	90	68-68.6
152	94	70.7-71.5
158	98	73.6-74

Height, in	Center back length, in	Sleeve length including shoulder width, in
38.5	23 1/4	17 1/8-17 1/4
41	24 3/4	18 1/8-18 1/4
43.25	26 3/4	19 1/4-19 1/2
45.5	28 3/4	20 3/8-20 1/2
48	30 3/8	22 5/8-22 7/8
50.5	31 1/2	23 5/8-23 7/8
52.75	32 5/8	24 5/8-24 7/8
55	33 7/8	25 3/4-26
57.5	35 3/8	26 3/4-27
60	37	27 7/8-28 1/8
62.25	38 5/8	29-29 1/8

# IMPORTANT!

*When purchasing fabric, please account for shrinkage and buy 5% more than required.*

3. Fusible woven interfacing, 140cm (55") wide:

	Size 26	Size 28	Size 30	Size 32	Size 34	Size 36	Size 38	Size 40
Meters	1.3	1.35	1.4	1.4	1.45	1.5	1.55	1.55
Yards	1 3/8	1 1/2	1 1/2	1 1/2	1 5/8	1 5/8	1 3/4	1 3/4

4. 13 buttons, 2–2.2cm (3/4"–7/8") in diameter

5. 13 backing buttons, 1cm (3/8") in diameter

6. 1 backing button, 1.5–2cm (5/8"–3/4") in diameter

7. Stitched straight-grain fusible stay tape — 4m (4 3/8 yards)

8. Matching thread — 1 spool

9. Matching topstitching thread (for example, Madeira #35) — 2 spools

## TOOLS AND EQUIPMENT

- Sewing machine for construction
- Buttonhole foot for your sewing machine

## PATTERN PIECES LIST

### 1. From main fabric:

- Front — cut 2
- Back — cut 1 on fold
- Back yoke (back storm flap) — cut 1 on fold
- Front yoke (front storm flap) — cut 1
- Front sleeve — cut 2
- Back sleeve — cut 2
- Undercollar — cut 1 on fold
- Upper collar — cut 1 on fold
- Collar stand — cut 2
- Front facing — cut 2
- Back neck facing — cut 1 on fold
- Pocket facing — cut 2
- Welt — cut 2
- Tie belt — cut 1
- Epaulet — cut 4
- Sleeve tab — cut 4
- Back yoke tab — cut 2
- Belt loops — cut 1
- Sleeve tab belt loops — cut 1
- Epaulet belt loops — cut 1

### 2. From lining fabric:

- Front lining — cut 2
- Back lining — cut 2
- Front sleeve lining — cut 2
- Back sleeve lining — cut 2
- Back yoke lining — cut 1 on fold
- Front yoke lining — cut 1
- Top pocket lining — cut 2
- Bottom pocket lining — cut 2

### 3. From fusible interfacing:

- Undercollar — cut 1 on fold
- Upper collar — cut 1 on fold
- Collar stand — cut 2
- Front facing — cut 2
- Back neck facing — cut 1 on fold
- Pocket facing — cut 2
- Welt — cut 2
- Tie belt — cut 1
- Epaulet — cut 4
- Sleeve tab — cut 4
- Back yoke tab — cut 2

# IMPORTANT!

*Don't forget to transfer all pattern markings and notches onto the fabric.*

### What to look for during fitting?

The left and right sides of the garment should look the same.

Verify the balance of the garment – the side seams must be vertical.

The front hem edges shouldn't overlap or spread apart.

The garment hemline should be parallel to the floor.

Evaluate the side view of the front and back of the garment (by looking at the garment sideways). The front and back should not sag or ride up. There shouldn't be any horizontal wrinkles across the back, nor any tension across the shoulder blades, shoulders and under the collar.

Evaluate the side seams from the front or back. The sides should not sag or ride up.

Verify the placement and the size of the pockets and other small decorative pieces (tabs, epaulets). Cut the small pieces out of muslin fabric and pin them to the garment.

Check the garment length.

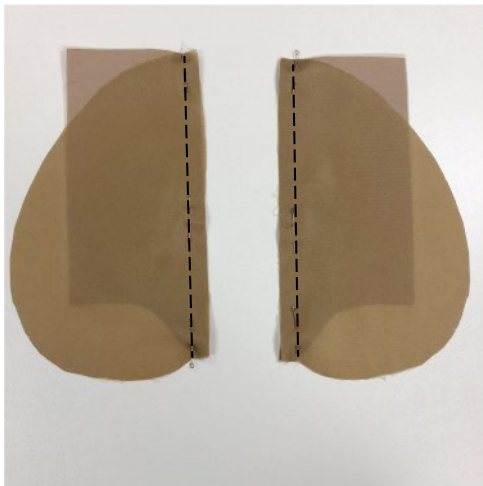
Verify the collar shape. The collar should fit snugly at the back neck.

Check for fit issues associated with individual features of the body (for example, an asymmetric figure with uneven shoulders, etc.)

There shouldn't be any tension and pulling, nor any diagonal draglines or folds where the buttons/snaps will be located.

Ensure there is enough ease for a comfortable fit.

After the fitting, mark changes symmetrically to both sides of the garment; if needed, baste once more and do another fitting.



Place the pocket facing and the top pocket lining pieces right sides together. Align the edges, pin, baste, and machine stitch. Backstitch at the beginning and end.



Press the seam flat.