

FROM THE FOUNDER OF THE #VIKISEWS BRAND



Back in 2016, when I was working on my first set of sewing instructions, I was trying to write them in such a way that even a complete beginner could easily understand and use them to create their very first garment. These instructions laid the foundation for the Vikisews brand, its vision and its mission. I wanted to create modern patterns with the most detailed and clear instructions.

Now, with each new collection we are constantly improving our instructions, amending them and adding more relevant details. By the time the final product reaches you, our drafters, correctors, and editors would have spent weeks perfecting every word and every photograph. If you compile a few of our instructions together, you will get a sewing manual that will assist you in sewing all kinds of garments at any difficulty level.

And I would be very happy if these instructions helped you to turn your hobby into a lifelong passion... Enjoy the process! Create your ultimate dream wardrobe! Wear your garments proudly for years to come!

If you have any questions, please contact us at info@vikisews.com - we are always there to help.



AMINA PATTERN DESCRIPTION

Amina is an oversized loose fit hoodie with a straight silhouette. The front features vertical design lines with built-in pockets. The hoodie has a dropped shoulder and long shirt sleeves with two decorative seams. The bottom of the sleeves is finished with cuffs. The hood is voluminous with a center seam and overlapping ends at the front neckline. The hood has a channel for a strip of twill tape threaded through the machine-sewn buttonholes. The bottom hem of the garment is finished with a waistband. The hoodie is below hip length.



IMPORTANT!

The contents of this pattern are copyright protected and belong exclusively to VikiSews. You may use VikiSews patterns for personal use. It is prohibited to share VikiSews patterns and instructions with third parties, as well as to publish patterns and instructions online for public access. According to part 1 of clause 1252 and clause 1301 of the Civil Code of the Russian Federation, failure to comply with the mentioned rules constitutes a breach of the legislation in force in the field of copyright and entails liability of the violator. Illegal use or distribution will be prosecuted in accordance with legislation.

You may use VikiSews patterns for commercial use, to sew custom-made garments and/or create fashion collections, on the condition that the patterns are solely used in a manufacturing setting and are not further shared with individuals.

TOTAL EASE ALLOWANCE

Bust ease, cm	Waistline ease, cm	Hipline ease, cm	Upper arm ease, cm
55.1-71.1	73.3-89.3	39.2-55.2	29.6-35.5

GARMENT LENGTH, SLEEVE LENGTH

Height, cm	Center back length including waistband, cm	Sleeve length including shoulder width and cuff, cm
1 (154-160)	74.3	80.2-81.8
2 (162-168)	77.3	82.2-83.8
3 (170-176)	80.3	84.2-85.8
4 (178-184)	83.3	86.2-87.8

SUGGESTED FABRIC

To sew this hoodie, choose knit fabrics with the following properties:

- Medium weight, breathable, non-stretch or with very little stretch
- The fiber content can include natural fibers (wool, cotton), artificial (viscose), blends (wool + polyester, cotton + polyester, cotton + elastane, etc.), and synthetic (polyester, polyester + elastane)
- The following fabrics are recommended: sweatshirt fleece, double knit (heavy or medium weight), bulky knit fabrics

Attention! We do not recommend using lightweight sheer fabrics (chiffon, organza, stretch lace).

As an additional material for the waistband and cuffs we recommend using rib knits.

The hoodie in the photo is made with sweatshirt fleece fabric. This fabric is medium weight, soft and has very little stretch. The fiber content is a blend of viscose, polyester and elastane. The waistband and cuffs are made out of ribbing.

PATTERN PIECES LIST

1. From main fabric:

- Front - cut 1 on fold
- Front side - cut 2
- Back - cut 1 on fold
- Top sleeve - cut 2
- Bottom sleeve - cut 2
- Hood - cut 2
- Pocket bag - cut 4

IMPORTANT! Don't forget to transfer all pattern markings and notches onto the fabric.

2. From additional fabric:

- Cuff - cut 2
- Front waistband - cut 1 on fold
- Back waistband - cut 1 on fold

3. From interfacing:

- Pocket opening seam allowances. Strips of fusible interfacing, 3cm wide and 22cm long, are applied to the pocket opening seam allowances.
- A 2x3cm rectangle of interfacing for each of the buttonhole areas on the hood. The interfacing grainline is parallel to the long side (runs along the selvedge of the fusible material).

SEAM ALLOWANCES

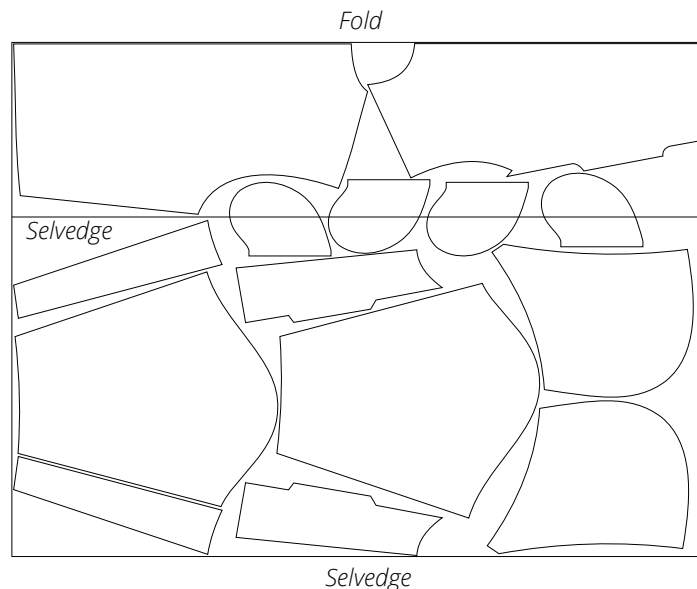
All pattern pieces include the following seam allowances:

- 1 cm for every edge

Take this into account when laying out pattern pieces on the fabric.

CUTTING LAYOUT

Main fabric, 160cm wide, with a partial fold, for sizes S-M in all heights,
with a non-directional print





Transfer the buttonhole marking line from the pattern to the right side of every hood piece. We recommend using a piece of chalk to put the marks. Test the chalk on a scrap of the main fabric first to make sure that marks can be easily removed.

Before you apply interfacing to the main pieces of your garment, we recommend that you try and fuse a piece of the interfacing material and/or fusible tape to a scrap of the main fabric for testing. Please also check the iron settings: temperature, steam (whether or not the main fabric can be interfaced with steam) and the holding time required for the interfacing material to be fused to the main fabric.

Partially interface the following:

- The buttonhole area on the wrong side of the hood — with a 2x3cm rectangle of the interfacing material, cut on the straight grain.
- Pocket opening seam allowances. Cut two strips of the interfacing material on the grain (strictly along the selvedge) with the width 3cm and length equal to the pocket opening size (according to the pattern) + 4cm.



To interface, position the gluey side of the interfacing onto the wrong side of the fabric and press. Try not to stretch the pieces with the iron. Firmly press the piece section by section, holding it down with the iron a few seconds until that section is adhered and then pressing down the next section. You may use a cotton pressing cloth to protect your iron sole. Once the interfacing is fused, leave the piece on a hard flat surface for 15 minutes for it to cool down.