

FROM THE FOUNDER OF THE #VIKISEWS BRAND

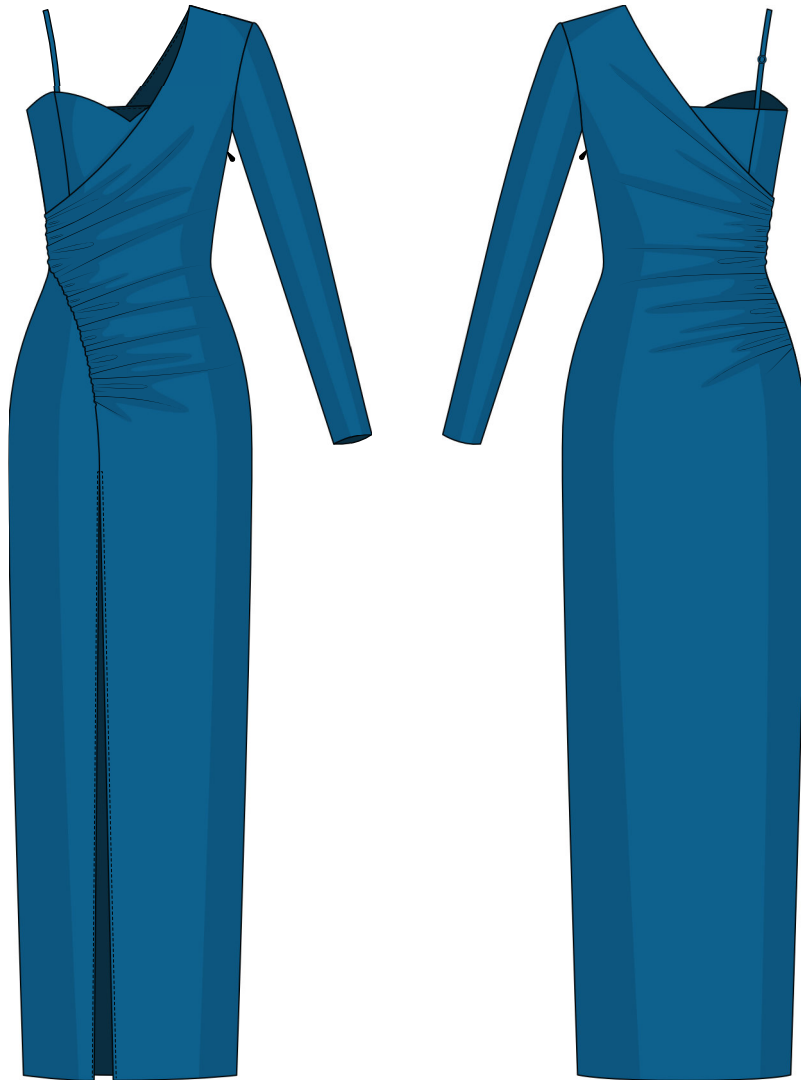


Back in 2016, when I was working on my first set of sewing instructions, I was trying to write them in such a way that even a complete beginner could easily understand and use them to create their very first garment. These instructions laid the foundation for the Vikisews brand, its vision and its mission. I wanted to create modern patterns with the utmost detailed and clear instructions.

Now, with each new collection we are constantly improving our instructions, amending them and adding more relevant details. By the time the final product reaches you, our drafters, correctors, and editors would have spent weeks perfecting every word and every photograph. If you compile a few of our instructions together, you will get a sewing manual that will assist you in sewing all kinds of garments at any difficulty level.

And I would be very happy if these instructions helped you to turn your hobby into a lifelong passion... Enjoy the process! Create your ultimate dream wardrobe! Wear your garments proudly for years to come!

If you have any questions, please contact us at info@vikisews.com — we are always there to help.



COLETTE PATTERN DESCRIPTION

Colette is a close-fitting dress. With its asymmetrical one-shoulder design, it has a long sleeve on the left and an adjustable shoulder strap on the right side. The fitted, set-in sleeve is cut on the bias. The dress is designed with an applied bodice piece as an inner layer. The outer layer features a draping detail both on the front and back. The high slit effect is achieved by attaching a separate side front skirt piece to the front. The dress closes with an invisible zipper in the left side seam. The dress is finished with a free-hanging lining and is below mid-calf length.



IMPORTANT!

The contents of this pattern are copyright protected and belong exclusively to Vikisews. You may use Vikisews patterns for personal use. It is prohibited to share Vikisews patterns and instructions with third parties, as well as to publish patterns and instructions online for public access. According to part 1 of clause 1252 and clause 1301 of the Civil Code of the Russian Federation, failure to comply with the mentioned rules constitutes a breach of the legislation in force in the field of copyright and entails liability of the violator. Illegal use or distribution will be prosecuted in accordance with legislation.

You may use Vikisews patterns for commercial use, to sew custom-made garments and/or create fashion collections, on the condition that the patterns are solely used in a manufacturing setting and are not further shared with individuals.

TOTAL EASE ALLOWANCE

	Bust ease	Waistline ease	Hipline ease	Upper arm ease
cm	-1.9 – -1.3	2.8–2.9	3.3–5.5	3.6
inches	-3/4 – -1/2	1 1/8	1 1/4–2 1/8	1 3/8

GARMENT LENGTH, SLEEVE LENGTH

Height, cm	Garment length from waist down, cm	Sleeve length (estimated), cm
1 (154–160)	93.9	59.8
2 (162–168)	96.9	61.8
3 (170–176)	99.9	63.8
4 (178–184)	102.9	65.8
Height, ft	Garment length from waist down, in	Sleeve length (estimated), in
1 (5'1"–5'3")	37	23 1/2
2 (5'4"–5'6")	38 1/8	24 3/8
3 (5'7"–5'9")	39 3/8	25 1/8
4 (5'10"–6'1")	40 1/2	25 7/8

SUGGESTED FABRIC

To sew this dress, choose dress-weight fabrics with the following properties:

- medium weight, with good drape, soft, non-stretch or with very little stretch, opaque
- the fiber content can include natural fibers (silk, cotton), artificial fibers (viscose), blends (wool + silk, wool + polyester, cotton + viscose, etc.), and synthetics (polyester, polyester + elastane)
- the following fabrics are recommended: natural silk, artificial silk, satin, dress-weight viscose, stretch crepe.

Attention! We do not recommend stretchy fabrics and lightweight sheer fabrics (chiffon, organza, stretch lace).

The dress in the photo is made of artificial silk. The fabric is medium weight, soft, non-stretch and with good drape.

The fiber content is 100% polyester.

PATTERN PIECES LIST

1. From main fabric:

- right side front bodice — cut 2 (1 + 1 lining)
- center front bodice — cut 2 (1 + 1 lining)
- left side front bodice — cut 2 (1 + 1 lining)
- right side back bodice — cut 2 (1 + 1 lining)
- center back bodice — cut 2 (1 + 1 lining)
- left side back bodice — cut 2 (1 + 1 lining)
- front — cut 1
- back — cut 1
- side front skirt — cut 1
- sleeve — cut 1
- front facing — cut 1
- back facing — cut 1
- strap + ring holder — cut 1
- back skirt lining — cut 1
- front skirt lining — cut 1
- side front skirt lining — cut 1.

IMPORTANT! Don't forget to transfer all pattern markings and notches onto the fabric.

2. From interfacing:

- front facing — cut 1
- back facing — cut 1.

Additionally, cut two interfacing strips, 1.3 cm (1/2") wide, to interface the zipper seam allowances. The interfacing strips should be cut on the cross grain (perpendicular to the selvedge). Also, cut two interfacing strips, 1.3 cm (1/2") wide, to interface the slit seam allowances. The interfacing strips should be cut on the straight grain (parallel to the selvedge).

SEAM ALLOWANCES

All pattern pieces include seam allowances as follows:

- garment hem allowance — 3 cm (1 1/8")
- sleeve hem allowance — 3 cm (1 1/8")
- all other edges — 1 cm (3/8").

Take this into account when laying out pattern pieces on the fabric.

For the gathering:

- On the back piece, machine-sew two parallel rows of stitches along the side edge, 6 mm (1/4") and 8 mm (just under 3/8") away from the edge, using a stitch length of 4 mm. Gather to the required length, as specified in the pattern.

Gather from the top edge down to the notch.

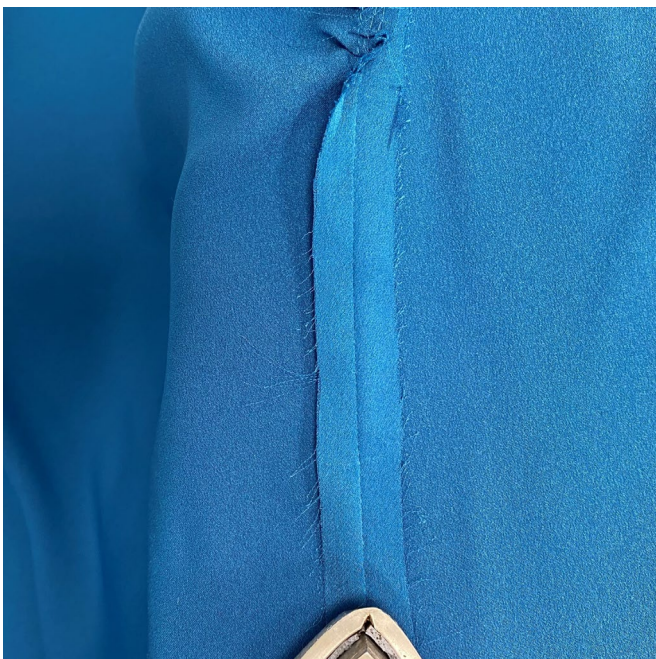
- On the front piece, machine-sew two parallel rows of stitches along the side edge, 6 mm (1/4") and 8 mm (just under 3/8") away from the edge, using a stitch length of 4 mm. Gather to the required length, as specified in the pattern.

- On the front piece, machine-sew two parallel rows of stitches along the right edge, 6 mm (1/4") and 8 mm (just under 3/8") away from the edge, using a stitch length of 4 mm. Gather to the required length, as specified in the pattern.

Gather from the top edge down to the notch.



Place the front and side front skirt pieces right sides together, align the edges. Pin, matching the notches. Stitch on the sewing machine, backstitching at the beginning and end.



Press the seam flat, press the seam allowances open all the way up to the gathering.