

FROM THE FOUNDER OF THE #VIKISEWS BRAND



Back in 2016, when I was working on my first set of sewing instructions, I was trying to write them in such a way that even a complete beginner could easily understand and use them to create their very first garment. These instructions laid the foundation for the Vikisews brand, its vision and its mission. I wanted to create modern patterns with the utmost detailed and clear instructions.

Now, with each new collection we are constantly improving our instructions, amending them and adding more relevant details. By the time the final product reaches you, our drafters, correctors, and editors would have spent weeks perfecting every word and every photograph. If you compile a few of our instructions together, you will get a sewing manual that will assist you in sewing all kinds of garments at any difficulty level.

And I would be very happy if these instructions helped you to turn your hobby into a lifelong passion... Enjoy the process! Create your ultimate dream wardrobe! Wear your garments proudly for years to come!

If you have any questions, please contact us at info@vikisews.com - we are always there to help.



MICKY PATTERN DESCRIPTION

Mickey is a semi-fitted children's jumper with a straight silhouette. It features long set-in sleeves finished with cuffs and a crew neck finished with a neckband. The jumper is below-hip length.



IMPORTANT!

The contents of this pattern are copyright protected and belong exclusively to Vikisews. You may use Vikisews patterns for personal use. It is prohibited to share Vikisews patterns and instructions with third parties, as well as to publish patterns and instructions online for public access. According to part 1 of clause 1252 and clause 1301 of the Civil Code of the Russian Federation, failure to comply with the mentioned rules constitutes a breach of the legislation in force in the field of copyright and entails liability of the violator. Illegal use or distribution will be prosecuted in accordance with legislation.

You may use Vikisews patterns for commercial use, to sew custom-made garments and/or create fashion collections, on the condition that the patterns are solely used in a manufacturing setting and are not further shared with individuals.

TOTAL EASE ALLOWANCE

| | Chest ease | Waistline ease | Hipline ease | Upper arm ease |
|--------|-------------|----------------|--------------|----------------|
| cm | 10.5–10.7 | 13–20 | 8–8.9 | 5.5–2.3 |
| inches | 4 1/8–4 1/4 | 5 1/8–7 7/8 | 3 1/8 –3 1/2 | 2 1/8 –7/8 |

GARMENT LENGTH, SLEEVE LENGTH

| Height, cm | Centre back length including neckband, cm | Sleeve length including cuff, cm |
|------------|--|-------------------------------------|
| 98 | 41.1 | 36.9 |
| 104 | 43.3 | 39.1 |
| 110 | 45.3 | 41.2–41.3 |
| 116 | 47.3 | 43.5–43.6 |
| 122 | 49.3 | 45.7–46.1 |
| 128 | 51.3 | 47.7–47.8 |
| 134 | 53.3 | 49.6–49.8 |
| 140 | 55.3 | 51.6–51.8 |
| 146 | 58.3 | 54–54.1 |
| 152 | 61.3 | 55.9–56 |
| 158 | 64.3 | 58.8–58.9 |

| Height, in | Centre back length including neckband, in | Sleeve length including cuff, in |
|------------|--|-------------------------------------|
| 38.5 | 16 1/8 | 14 1/2 |
| 41 | 17 | 15 3/8 |
| 43.25 | 17 7/8 | 16 1/4 |
| 45.5 | 18 5/8 | 17 1/8 |
| 48 | 19 3/8 | 18–18 1/8 |
| 50.5 | 20 1/4 | 18 3/4–18 7/8 |
| 52.75 | 21 | 19 1/2–19 5/8 |
| 55 | 21 3/4 | 20 3/8 |
| 57.5 | 23 | 21 1/4 |
| 60 | 24 1/8 | 22 |
| 62.25 | 25 3/8 | 23 1/8–23 1/4 |

Main fabric, 180cm wide, in meters:

| Height, cm | Size | | | | | | | |
|------------|------|------|------|------|------|------|------|------|
| | 26 | 28 | 30 | 32 | 34 | 36 | 38 | 40 |
| 98 | 0.47 | 0.48 | | | | | | |
| 104 | 0.49 | 0.5 | | | | | | |
| 110 | | 0.52 | 0.52 | | | | | |
| 116 | | 0.54 | 0.54 | | | | | |
| 122 | | | 0.56 | 0.56 | | | | |
| 128 | | | 0.58 | 0.58 | 0.58 | | | |
| 134 | | | | 0.6 | 0.6 | 0.6 | | |
| 140 | | | | | 0.62 | 0.62 | 0.62 | |
| 146 | | | | | | 0.65 | 0.65 | 0.65 |
| 152 | | | | | | 0.68 | 0.68 | 0.69 |
| 158 | | | | | | | 0.72 | 0.72 |

Main fabric, 70" wide, in yards:

| Height, in | Size | | | | | | | |
|------------|------|-----|-----|-----|-----|-----|-----|-----|
| | 26 | 28 | 30 | 32 | 34 | 36 | 38 | 40 |
| 38.5 | 1/2 | 1/2 | | | | | | |
| 41 | 1/2 | 1/2 | | | | | | |
| 43.25 | | 5/8 | 5/8 | | | | | |
| 45.5 | | 5/8 | 5/8 | | | | | |
| 48 | | | 5/8 | 5/8 | | | | |
| 50.5 | | | 5/8 | 5/8 | 5/8 | | | |
| 52.75 | | | | 5/8 | 5/8 | 5/8 | | |
| 55 | | | | | 5/8 | 5/8 | 5/8 | |
| 57.5 | | | | | | 3/4 | 3/4 | 3/4 |
| 60 | | | | | | 3/4 | 3/4 | 3/4 |
| 62.25 | | | | | | | 3/4 | 3/4 |

2. Additional fabric (ribbing), 120cm (47") wide - 0.1m (4") for all sizes in all heights.

SEAM ALLOWANCES

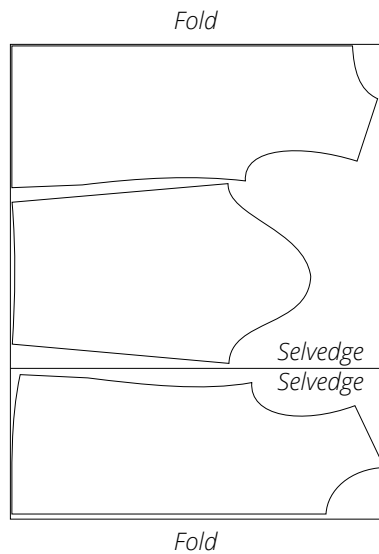
Pattern pieces include seam allowances as follows:

- Garment hem allowance – 2cm (3/4")
- All other edges – 1cm (3/8")

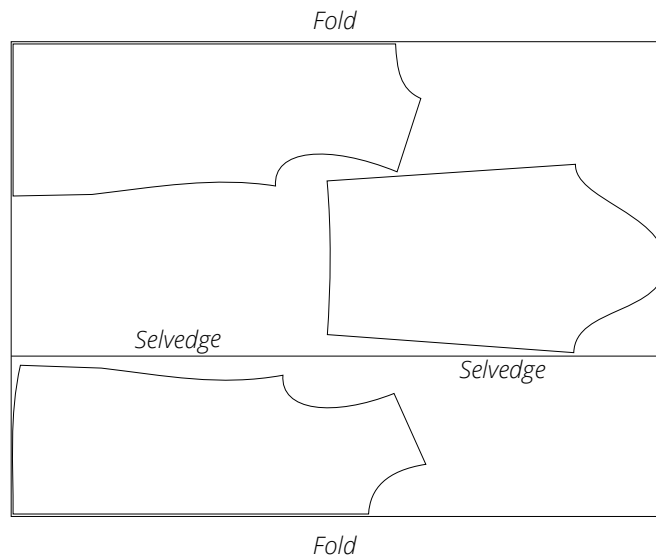
Take this into account when laying out pattern pieces on the fabric.

CUTTING LAYOUT

Take this into account when laying out pattern pieces on the fabric. Main fabric with a directional print, 140 cm (55") wide, with two folds, for all sizes, height 98–122 (38.5–48"); for size 30–32, height 128 (50.5")



Main fabric with a directional print, 140 cm (55") wide, with two folds, for size 34, height 128 (50.5"); for sizes 32–34, height 134 (52.75"); and for size 34, height 140 (55")





Apply interfacing strips to the shoulder seam allowance of the front piece. The grainline of the interfacing should be parallel to the longer side of the strip, the width of the strips should be 1cm (3/8"). You can use shop-bought fusible interfacing tape instead.

To interface, put the gluey side of the interfacing on top of the wrong side of the fabric piece (or a section thereof) and press with the iron.

Do not iron the piece, but instead press it section by section, holding it down with the iron for a few seconds until that section is adhered and then pressing down the next section. You may use a cotton pressing cloth to protect your iron sole. Once the interfacing process is complete, leave the piece on a hard, flat surface for 15 minutes for it to cool down.

FITTING

First test fitting

We recommend test fitting any garment.

Why? Test fitting is done to check the balance of the garment, to adjust the ease (in case you did not make a toile of the garment and made no adjustments to the pattern before cutting out the pieces) only by decreasing it, to adjust the finished garment length and sleeve length, to decide on the depth of the neckline.

How? After applying fusible interfacing tape, assemble the garment (including the sleeves) by basting the main seams (shoulder seams, side seams, seams along the sleeves). Baste the garment's hem allowance and baste the cuffs to the sleeve hems.

Assembling the garment in the right way is essential to achieve a good fit. Do not overlook the notches. Start by matching the notches of the garment pieces, and then straightening the fabric and pinning in between the notches.

To baste the garment you can:

- machine sew the seams (use a 4–5 mm stitch length)
- baste by hand (approximately 1cm [3/8"] stitch length).

Important! Check if the chosen fabric is prone to be left with visible holes from the needle (such as knits, Ponte di Roma etc.). In this case, it is recommended to check the fit or detect any potential fit issues by sewing a TOILE first. Test fitting the garment from the main fabric is either not done at all, or has the purpose to solely adjust the length.

If after basting one piece ends up being bigger than the other one, do not rush to true them (making them identical by trimming the excess). First make sure all notches match, lay your pieces out on a flat surface and try to baste them again.