

FROM THE FOUNDER OF THE #VIKISEWS BRAND

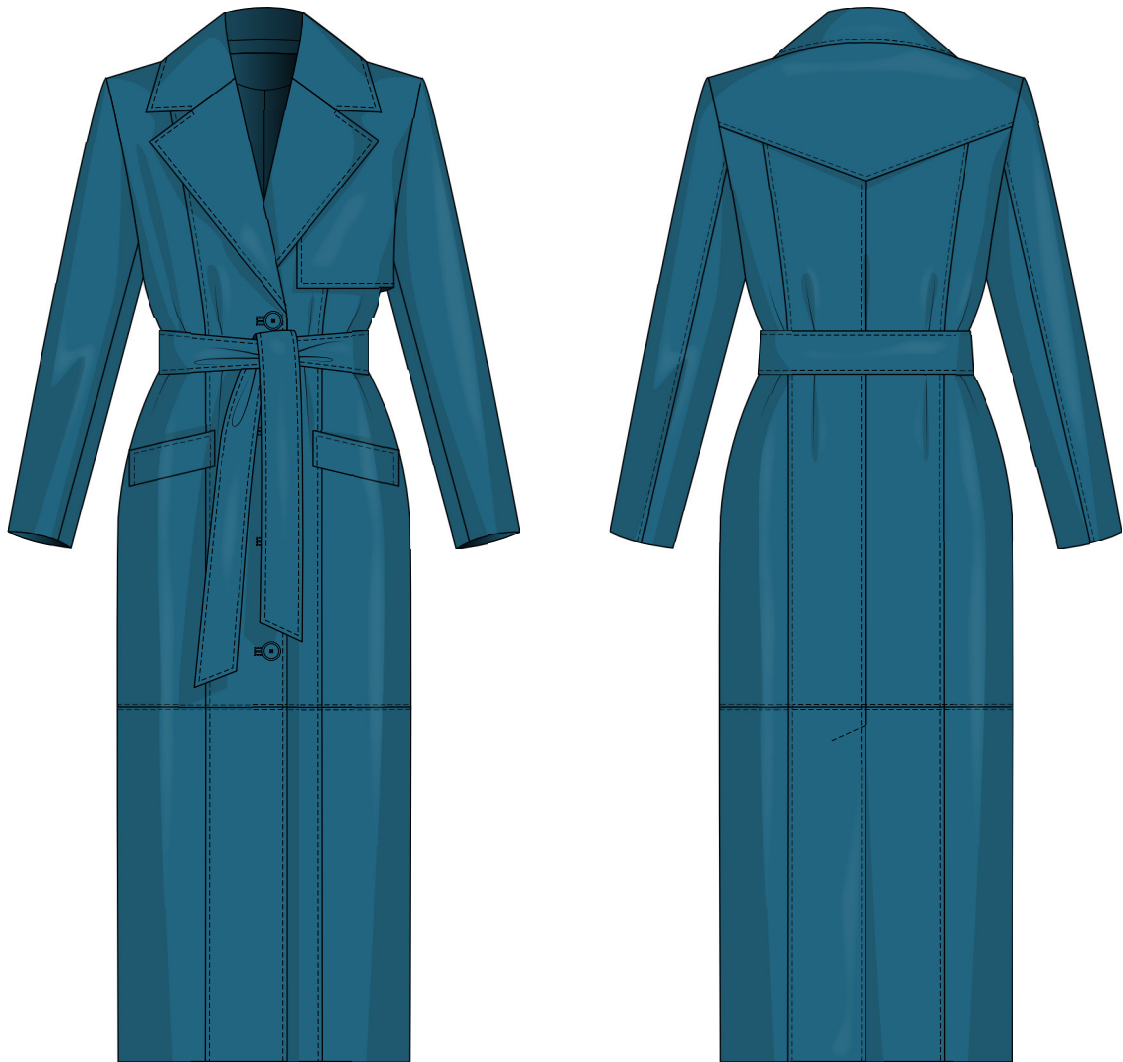


Back in 2016, when I was working on my first set of sewing instructions, I was trying to write them in such a way that even a complete beginner could easily understand and use them to create their very first garment. These instructions laid the foundation for the Vikisews brand, its vision and its mission. I wanted to create modern patterns with the utmost detailed and clear instructions.

Now, with each new collection we are constantly improving our instructions, amending them and adding more relevant details. By the time the final product reaches you, our drafters, correctors, and editors would have spent weeks perfecting every word and every photograph. If you compile a few of our instructions together, you will get a sewing manual that will assist you in sewing all kinds of garments at any difficulty level.

And I would be very happy if these instructions helped you to turn your hobby into a lifelong passion... Enjoy the process! Create your ultimate dream wardrobe! Wear your garments proudly for years to come!

If you have any questions, please contact us at info@vikisews.com - we are always there to help.



GLADYS PATTERN DESCRIPTION

Gladys is a semi-fitted, straight-cut, fully lined coat featuring a detachable belt. The shaping of the coat is achieved with a center back seam, as well as with princess seams on the back and front. There is a shaped yoke on the back. The center back seam is finished with a vent. The front of the coat features a rectangular-shaped storm flap attached to the shoulder seam, as well as to the armhole of the garment. There are horizontal seams above the knee, which run across the front and back of the garment. Gladys features decorative topstitching along the main seams. The classic stand-collar features rectangular-shaped lapels. The coat has welt pockets at the hip level and long, set-in, two-piece sleeves. It has a center front closure, featuring buttons and bound buttonholes. Gladys is below-knee length.



IMPORTANT!

The contents of this pattern are copyright protected and belong exclusively to VikiSews. You may use VikiSews patterns for personal use. It is prohibited to share VikiSews patterns and instructions with third parties, as well as to publish patterns and instructions online for public access. According to part 1 of clause 1252 and clause 1301 of the Civil Code of the Russian Federation, failure to comply with the mentioned rules constitutes a breach of the legislation in force in the field of copyright and entails liability of the violator. Illegal use or distribution will be prosecuted in accordance with legislation.

You may use VikiSews patterns for commercial use, to sew custom-made garments and/or create fashion collections, on the condition that the patterns are solely used in a manufacturing setting and are not further shared with individuals.

TOTAL EASE ALLOWANCE

	Bust ease	Waistline ease	Hipline ease	Upper arm ease
cm	21	41.6	18	8
inches	8 1/4	16 3/8	7 1/8	3 1/8

GARMENT LENGTH, SLEEVE LENGTH

Height, cm	Center back length, cm	Sleeve length, cm	Height, ft	Center back length, in	Sleeve length, in
1 (154–160)	116.9–118.7	59.8–61.5	1 (5'1"–5'3")	46–46 3/4	23 1/2–24 1/4
2 (162–168)	120.9–122.7	61.8–63.5	2 (5'4"–5'6")	47 5/8–48 1/4	24 3/4–25
3 (170–176)	124–126.7	63.8–65.4	3 (5'7"–5'9")	48 7/8–49 7/8	25 1/8–25 3/4
4 (178–184)	128.9–130.7	65.8–67.4	4 (5'10"–6'1")	50 3/4–51 1/2	25 7/8–26 1/2

SUGGESTED FABRIC

To sew this coat, choose fabrics with the following properties:

- medium-weight, durable, non-stretch or low-stretch, opaque
- the fabric content can include natural (wool, cotton, linen), artificial (viscose), blends (man-made silk + polyurethane + elastane, cotton + polyester, cotton + viscose, etc.), and synthetic fibers (polyester + polyurethane, polyester + elastane)
- the following fabrics are recommended: faux leather, denim, corduroy, blended raincoat fabrics, thick cotton gabardine.

Attention! We do not recommend very stretchy knit materials (jersey fabric) and lightweight sheer fabrics (chiffon, stretch lace).

For the lining, choose lining fabrics made of artificial (viscose), blends (viscose + elastane, viscose + polyester), and synthetic fibers (polyester, polyester + elastane).

The coat in the photo is made of faux leather. This fabric is medium-weight, pliable, and has little stretch. The fiber content is a blend of man-made silk, polyurethane and elastane.

The lining is 100% viscose.

Following the lines marked on the pattern pieces:

- shoulder cap area on the top sleeve - cut 2
- hem area on the top sleeve - cut 2
- armhole area on the bottom sleeve - cut 2
- hem area on the bottom sleeve - cut 2.

Additionally, cut 2 strips of interfacing that are 6 cm (2 3/8") wide to interface the pocket area on the top front and top side front pieces. The grainline of the interfacing should be parallel to the longer side (should run along the selvedge of the interfacing).

SEAM ALLOWANCES

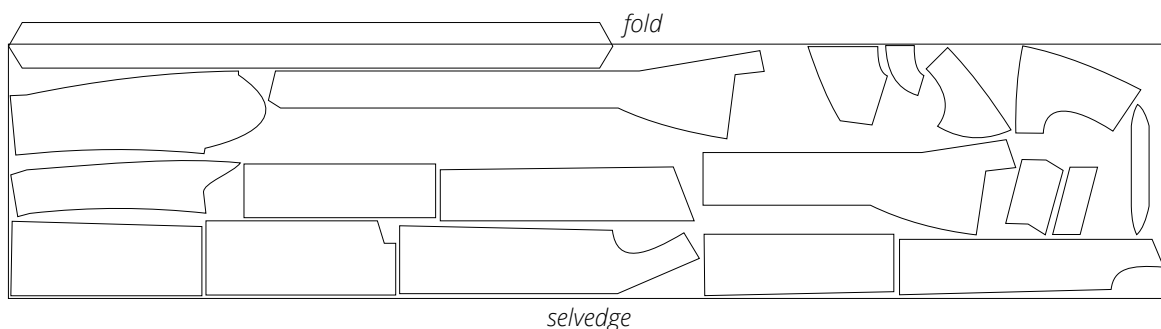
All pattern pieces include seam allowances as follows:

- garment hem allowance - 4 cm (1 5/8")
- sleeve hem allowance - 4 cm (1 5/8")
- pocket bags' joining seam allowance - 1.5 cm (5/8")
- all other seams - 1 cm (3/8").

Take this into account when laying out pattern pieces on the fabric.

CUTTING LAYOUT

Main fabric with a directional print and nap, 140 cm (55") wide, folded,
for size 34 in all heights



The belt and storm flap pieces are to be cut on a single layer out of leftover fabric.
Cut one storm flap piece only.



Before applying interfacing on the pieces cut in the main fabric, we recommend testing interfacing and/or straight grain fusible tape on a leftover piece of fabric. Also, check the iron settings: the temperature, the steam (if the main fabric can be interfaced using the steam setting), and the time needed for the interfacing to adhere to the main fabric.

Fully interface the following pieces:

- back yoke – 1 piece on fold
- top back – 2 pieces
- bottom back – 2 pieces
- top side back – 2 pieces
- bottom side back – 2 pieces
- top front – 2 pieces
- bottom front – 2 pieces
- top side front – 2 pieces
- bottom side front – 2 pieces
- upper collar – 1 piece on fold
- undercollar – 2 pieces
- collar stand – 2 pieces
- front facing – 2 pieces
- back neck facing – 1 piece on fold
- welt – 2 pieces
- pocket facing – 2 pieces
- belt – 1/2 of width of the piece.



Additionally interface using straight grain fusible tape the following:

- the neckline, lapel and front edges on the top front and bottom front pieces
- the lapel roll line on the top front piece
- the vent roll line on the bottom back piece
- the foldline on the welt piece
- the angled edges on the back yoke piece.

