

# FROM THE FOUNDER OF THE #VIKISEWS BRAND

---

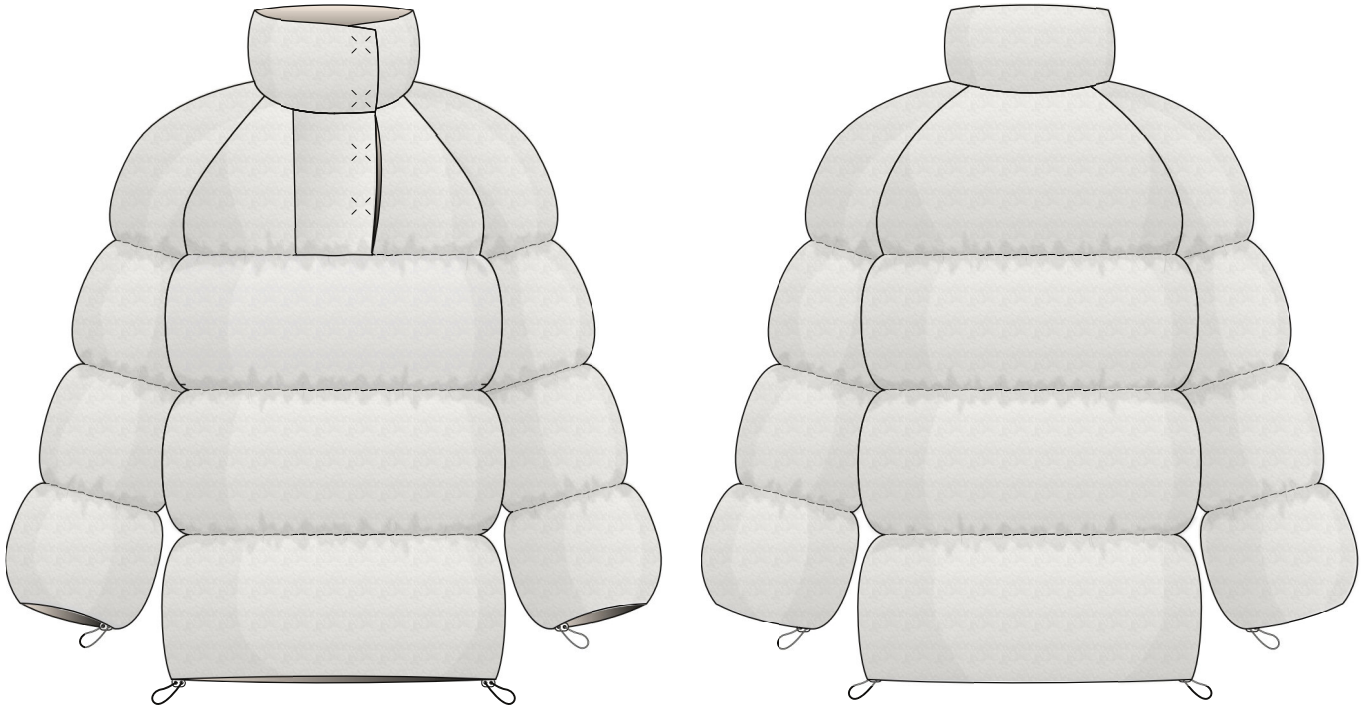


Back in 2016, when I was working on my first set of sewing instructions, I was trying to write them in such a way that even a complete beginner could easily understand and use them to create their very first garment. These instructions laid the foundation for the Vikisews brand, its vision and its mission. I wanted to create modern patterns with the utmost detailed and clear instructions.

Now, with each new collection we are constantly improving our instructions, amending them and adding more relevant details. By the time the final product reaches you, our drafters, correctors, and editors would have spent weeks perfecting every word and every photograph. If you compile a few of our instructions together, you will get a sewing manual that will assist you in sewing all kinds of garments at any difficulty level.

And I would be very happy if these instructions helped you to turn your hobby into a lifelong passion... Enjoy the process! Create your ultimate dream wardrobe! Wear your garments proudly for years to come!

If you have any questions, please contact us at [info@vikisews.com](mailto:info@vikisews.com) - we are always there to help.



## UMA PATTERN DESCRIPTION

---

Uma is a loose-fitting, straight-cut down coat featuring wide horizontal quilting. The garment has side seam pockets and a tall standing collar. Uma fastens with four snaps on the short center front placket and collar. The long, wide, one-piece raglan sleeves have a shoulder dart. Decorative elastic cord with stoppers is threaded through the casings at the garment and sleeve hems. The coat is below-hip length.



## IMPORTANT!

---

The contents of this pattern are copyright protected and belong exclusively to Vikisews. You may use Vikisews patterns for personal use. It is prohibited to share Vikisews patterns and instructions with third parties, as well as to publish patterns and instructions online for public access. According to part 1 of clause 1252 and clause 1301 of the Civil Code of the Russian Federation, failure to comply with the mentioned rules constitutes a breach of the legislation in force in the field of copyright and entails liability of the violator. Illegal use or distribution will be prosecuted in accordance with legislation.

You may use Vikisews patterns for commercial use, to sew custom-made garments and/or create fashion collections, on the condition that the patterns are solely used in a manufacturing setting and are not further shared with individuals.

# TOTAL EASE ALLOWANCE

	Bust ease	Waistline ease	Hipline ease	Upper arm ease
cm	48.1–56.1	69.4–77.4	46–54	26.7–29.5
inches	18 7/8–22 1/8	27 3/8–30 1/2	18 1/8–21 1/4	10 1/2–11 5/8

# GARMENT LENGTH, SLEEVE LENGTH

Height, cm	Garment length at center back, cm	Sleeve length including shoulder width, cm	Height, ft	Garment length at center back, in	Sleeve length including shoulder width, in
1 (154–160)	76.7–77.8	78–80.6	1 (5'1"–5'3")	30 1/4–30 5/8	30 3/4–31 3/4
2 (162–168)	79.7–80.8	80–82.5	2 (5'4"–5'6")	31 3/8–31 3/4	31 1/2–32 1/2
3 (170–176)	82.7–83.8	82–84.6	3 (5'7"–5'9")	32 1/2–33	32 1/4–33 1/4
4 (178–184)	85.7–86.8	84–86.5	4 (5'10"–6'1")	33 3/4–34 1/8	33 1/8–34

# SUGGESTED FABRIC

To sew the coat, use short and medium pile faux broadtail fur (pile length up to 10 mm [3/8"]) with a knit or woven backing and with the following properties:

- Medium weight, non-stretch or with very little stretch, malleable

You may also use raincoat fabrics with the following properties:

- Malleable, soft, non-stretch, wind-proof and water-resistant
- The fiber content can include natural fibers (wool, cotton), artificial (viscose, acetate), blends (cotton + polyester, etc.), and synthetics (polyester, polyester + elastane, terylene/dacron)
- The following fabrics are recommended: faux fur with knit or woven backing, blended raincoat fabrics, dewspo, twill, taffeta, taslan, etc.

**Attention!** We do not recommend stretchy knit materials.

For the lining, we recommend artificial fibers (viscose), blends (viscose + elastane, viscose + polyester) or synthetics (polyester, polyester + elastane). The lining fabric must be smooth, slippery and opaque.

For the insulation, use swan down.

For the interlining, use spunbond 30 g/m2.

Spunbond interlining, 300 cm wide, in meters  
(double layer):

Height, cm	Sizes		
	XS-S	M-L	XL
1 (154–160)	1.73	1.9	2.56 (1.71; 0.85)
2 (162–168)	1.76	1.94	2.63 (1.75; 0.88)
3 (170–176)	1.81	1.98	2.72 (1.81; 0.91)
4 (178–184)	1.84	2.02	2.81 (1.87; 0.94)

4. Fusible / sew-in knit or woven interfacing, 140 cm (55") wide, for all sizes in all heights — 0.3 m (3/8 yd). Use fusible / sew-in stay tape to interface the placket edge. Cut 1 cm (3/8") wide stay tape on the grain. The stay tape may be one-piece or made of several pieces.

Spunbond interlining, 118" wide, in yards  
(double layer):

Height, ft	Sizes		
	XS-S	M-L	XL
1 (5'1"–5'3")	1 7/8	2 1/8	2 3/4 (1 7/8; 7/8)
2 (5'4"–5'6")	1 7/8	2 1/8	2 7/8 (1 7/8; 1)
3 (5'7"–5'9")	2	2 1/8	3 (2; 1)
4 (5'10"–6'1")	2	2 1/4	3 1/8 (2; 1)

\* The sew-in interfacing material (calico) must be preshrunk by being soaked in warm water, rinsed in cool water, and steam-pressed thoroughly while still wet. The total length required is about 50 cm (1/2 yd). You can use fusible stay tape if the fur properties allow steam pressing.

**IMPORTANT!** When purchasing fabric, please account for shrinkage and buy 5% more than required.

Swan down insulation — 800 g to 1,000 g. (Those are the approximate volume and weight of a pillow stuffing: 800 g for a 50x70 cm [20" by 27 1/2"] pillow and 1,200 g for a 70x70 cm [27 1/2" by 27 1/2"] pillow).

5. Knit elastic cord, 0.3–0.5 cm (1/8"–3/16"),  
in meters/yards:

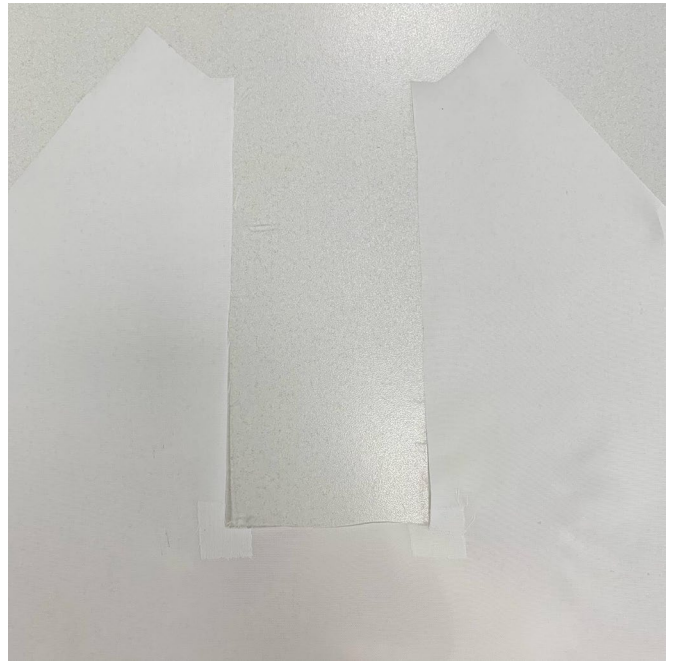
Sizes	Sizes		
	XS-S	M-L	XL
Total elastic cord length, m	2.21	2.44	2.6
Total elastic cord length, yd	2 3/8	2 5/8	2 7/8

6. Four double-hole stoppers

7. Four sew-on snaps, 2 cm (3/4") in diameter

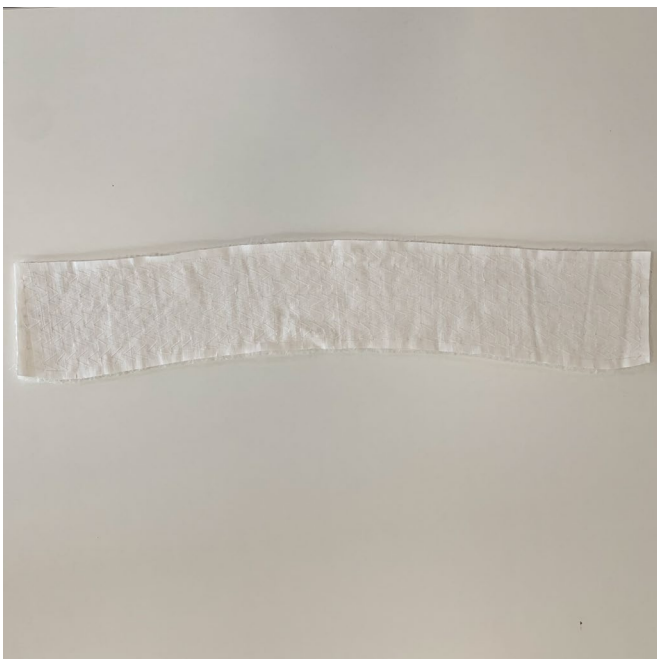
8. Thread matching the faux fur — 1 spool,  
thread matching the lining fabric — 1 spool





Pad-stitch the pieces of sew-in interfacing to the placket pieces with several parallel rows of permanent diagonal hand stitches. While attaching the sew-in interfacing, make sure the stitches are not visible on the right side. If the pile is caught by hand stitching, release it with a needle.

The interfacing piece shall cover the placket center line by 3 mm (1/8").



Pad-stitch a piece of sew-in interfacing to the inner placket.