

FROM THE FOUNDER OF THE #VIKISEWS BRAND



Back in 2016, when I was working on my first set of sewing instructions, I was trying to write them in such a way that even a complete beginner could easily understand and use them to create their very first garment. These instructions laid the foundation for the Vikisews brand, its vision and its mission. I wanted to create modern patterns with the utmost detailed and clear instructions.

Now, with each new collection we are constantly improving our instructions, amending them and adding more relevant details. By the time the final product reaches you, our drafters, correctors, and editors would have spent weeks perfecting every word and every photograph. If you compile a few of our instructions together, you will get a sewing manual that will assist you in sewing all kinds of garments at any difficulty level.

And I would be very happy if these instructions helped you to turn your hobby into a lifelong passion... Enjoy the process! Create your ultimate dream wardrobe! Wear your garments proudly for years to come!

If you have any questions, please contact us at info@vikisews.com — we are always there to help.



VIRIAM PATTERN DESCRIPTION

Viriam is a semi-fitted dress cut on the bias. The silhouette is shaped thanks to the vertical princess seams on the front and back with flounces in them. The left princess seam features a mid-thigh high slit. The crew neck has a deep keyhole on the front with ties at the neck and bust. The long, two-piece sleeves are flared at the hem. The front seam of the sleeve features a flounce and a slit with ties at the bottom. Viriam is midi length.



IMPORTANT!

The contents of this pattern are copyright protected and belong exclusively to Vikisews. You may use Vikisews patterns for personal use. It is prohibited to share Vikisews patterns and instructions with third parties, as well as to publish patterns and instructions online for public access. According to part 1 of clause 1252 and clause 1301 of the Civil Code of the Russian Federation, failure to comply with the mentioned rules constitutes a breach of the legislation in force in the field of copyright and entails liability of the violator. Illegal use or distribution will be prosecuted in accordance with legislation.

You may use Vikisews patterns for commercial use, to sew custom-made garments and/or create fashion collections, on the condition that the patterns are solely used in a manufacturing setting and are not further shared with individuals.

TOTAL EASE ALLOWANCE

	Bust ease	Waistline ease	Hipline ease	Upper arm ease
cm	10–12.2	16–19.4	14.6–17.8	3.9–4.8
inches	3 7/8–4 3/4	6 1/4–7 5/8	5 3/4–7	1 1/2–1 7/8

GARMENT LENGTH, SLEEVE LENGTH

Height, cm	Garment length at center back, cm	Sleeve length, cm
1 (154–160)	119.6–121.4	61.5–63.2
2 (162–168)	124.8–126.4	65.4–67.1
3 (170–176)	129.6–131.4	69.2–70.8
4 (178–184)	134.6–136.4	73.1–74.6

Height, ft	Garment length at center back, in	Sleeve length, in
1 (5'1"–5'3")	47 1/8–47 3/4	24 1/4–24 7/8
2 (5'4"–5'6")	49 1/8–49 3/4	25 3/4–26 3/8
3 (5'7"–5'9")	51–51 3/4	27 1/4–27 7/8
4 (5'10"–6'1")	53–53 3/4	28 3/4–29 3/8

SUGGESTED FABRIC

To sew this dress, choose blouse and dress-weight fabrics with the following properties:

- lightweight, fluid, soft, non-stretch or with very little stretch, sheer, semi-sheer or opaque, double-faced
- the fiber content can include natural fibers (silk, cotton), artificial fibers (viscose), blends (cotton + silk, cotton + viscose, silk + viscose, etc.), and synthetics (polyester, polyester + elastane)
- the following fabrics are recommended: chiffon, crepe de chine, lightweight natural or synthetic silk

Attention! We do not recommend stretchy knit fabrics and heavyweight fabrics.

The garment in the photo is made of blouse and dress-weight chiffon. The fabric is lightweight, fluid, soft and with very little stretch. The fiber content is 100% silk.

PATTERN PIECES LIST

1. From main fabric:

- front — cut 1
- back — cut 1
- side front — cut 2
- side back — cut 2
- front sleeve — cut 2
- back sleeve — cut 2
- neckline rouleau strap — cut 2
- sleeve flounce — cut 2
- front princess seam flounce — cut 2

- back princess seam flounce — cut 2
- rouleau strap — cut 4
- armhole rouleau strap — cut 2
- neck keyhole bias binding — cut 1

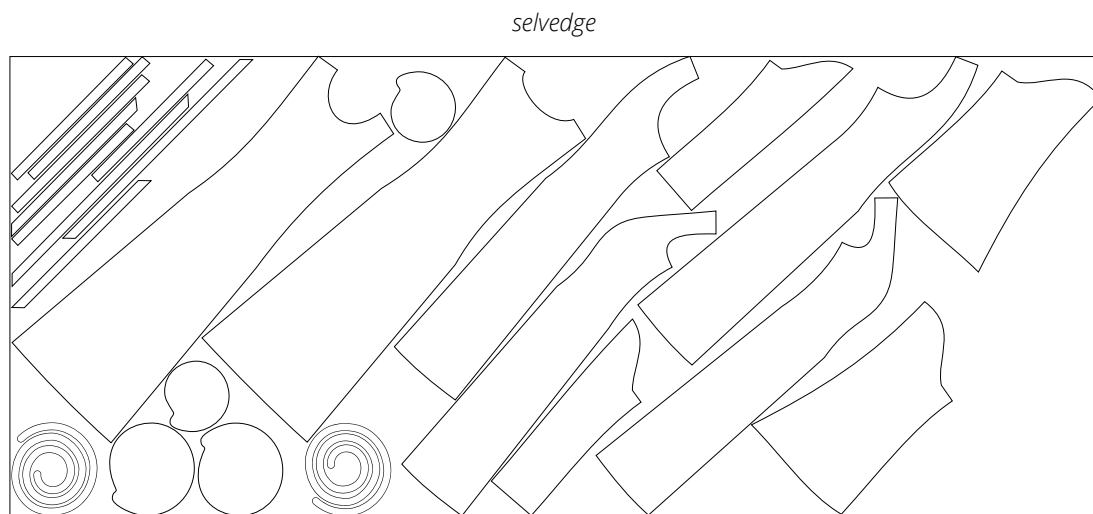
IMPORTANT! Don't forget to transfer all pattern markings and notches onto the fabric.

SEAM ALLOWANCES

All pattern pieces include 1 cm (3/8") wide seam allowances.
Take this into account when laying out pattern pieces on the fabric.

CUTTING LAYOUT

Main fabric, 140 cm (55") wide, with a directional print/nap, cut on a single layer,
for sizes 34–52 in height 1 and sizes 40–52 in height 2



selvedge

If one of the pieces ends up longer than the other after basting, do not rush to true them by cutting off the excess or stretching the shorter piece. First make sure that the notches are properly matched, lay the pieces on a flat surface and try to re-baste them together. If the pieces still don't match in length because they have stretched or there has been a cutting mistake, you can always true the pieces after the fitting, during the construction of the garment.

After assembling the garment, press it lightly and press the seam allowances either to one side or open.

What to look for during fitting?

The left and right sides of the garment should look the same.

Verify the garment balance: the side seams should be vertical, the shoulder seams should lie on the natural shoulder line.

The garment hem should be straight and parallel to the floor.

Evaluate the side view of the front and back of the garment (look at the person sideways). The front and back should not sag or ride up. There shouldn't be any horizontal wrinkles across the back or any tension across the shoulder blades and shoulders.

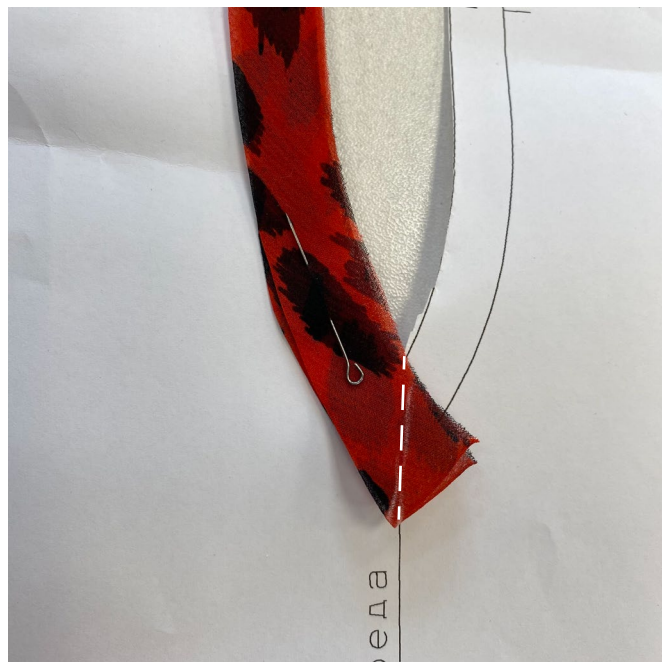
Evaluate the side seams from the front or back. The garment sides should not sag or ride up.

Verify the garment length.

Check for fit issues associated with individual features of the body (for example, an asymmetrical figure with shoulders at different levels, etc.).

Verify the garment volume, there should be enough ease for a comfortable fit.

After the fitting, mark changes symmetrically to both sides of the garment; if needed, baste once more for another fitting.



Fold the neck keyhole bias binding piece in half lengthwise, wrong sides together, and press. Pin it, folded in the center. Place the neck keyhole bias binding piece along the neck keyhole edge on the paper pattern, align the edges. Mark the center line.

Machine-stitch along the center line. Use a stitch length of up to 1 mm instead of backstitching on the delicate fabric.