

FROM THE FOUNDER OF THE #VIKISEWS BRAND

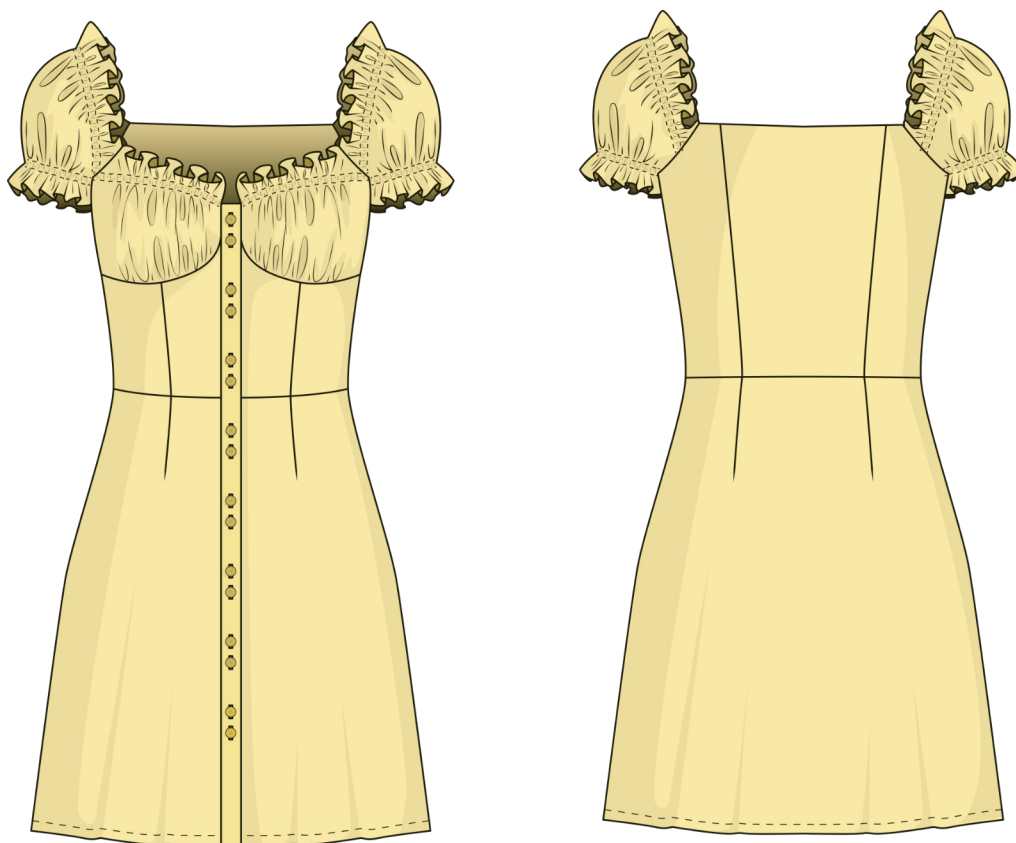


Back in 2016, when I was working on my first sewing instructions, I was trying to write them in such a way that even a complete beginner would be able to understand and create their first garment. These instructions laid the foundation of the Vikisews brand, its vision and mission. I wanted to create modern patterns with the most detailed and clear instructions.

With each new collection, we're constantly improving our instructions: adding more details, removing redundancies. Before they reach you, our drafters, correctors, and editors spend weeks working on every word and every photograph. If you put a few instructions together, you'll get a sewing manual that will assist you in sewing all kinds of garments of any difficulty level.

And I'll be very happy if these instructions help you to grow a small hobby into a lifelong passion. Enjoy the process. Create your ideal and effective wardrobe. Wear your garments with pride and for years to come.

If you have any questions, do write to us at info@vikisews.com. We'll always help you.



ALEXIA PATTERN DESCRIPTION

Alexia is a close fitting dress with an accentuated waist. It features a waist seam and separate yokes on the top front with gathering on the bottom and an elasticated channel on top. The waist darts have been transferred into princess seams. The back also features vertical princess seams. Alexia fastens with buttons and buttonholes on the center front plackets. The short voluminous sleeves are half raglan and feature elasticated channels on the top and bottom to mirror the yokes. The top edge of the yokes as well as the top and bottom edges of the sleeves are finished with rolled hems. The bottom of the skirt is slightly flared, the front and back necklines are deep and wide. Alexia is above-knee length.



FOR YOUR CONSIDERATION!

Patterns of VikiSews are allowed:

- for personal use. It is prohibited to share VikiSews patterns and sewing instructions with third parties, as well as to publish patterns and instructions online for public access. According to part 1 of clause 1252 and clause 1301 of the Civil Code of the Russian Federation, failure to comply with the mentioned rules constitutes a breach of the legislation in force in the field of copyright and entails liability of the violator. Illegal use or distribution will be prosecuted in accordance with legislation.
- for commercial use, to sew custom-made garments and/or create fashion collections, on the condition that the patterns are solely used in a manufacturing setting and are not further shared with individual parties.

TOTAL WEARING EASE

Bust ease, cm	Waistline ease, cm	Hipline ease, cm	Upper arm ease, cm
4.1-4.7	4.1-4.2	7.3-7.8	30.8-31.8

GARMENT LENGTH, SLEEVE LENGTH

Height, cm	Garment length at the back from waist down, cm	Sleeve length including part of shoulder, cm
1 (154-160)	42.2	19.1-23.8
2 (162-168)	46.2	20.1-23.9
3 (170-176)	50.2	21.1-24.3
4 (178-184)	54.2	21.6-25.0

SUGGESTED FABRIC

To sew this dress, choose woven fabrics with the following properties:

- Lightweight, with good drape, breathable, soft, non-stretch or with very little stretch, opaque
- The fiber content can include natural fibers (silk, cotton), artificial (viscose), blends (cotton + viscose, etc)
- The following fabrics are recommended: viscose, lightweight denim, challis, shirting, chintz, artificial silk, natural silk

Attention! We do not recommend stretchy knit materials and lightweight sheer fabrics (chiffon, organza, stretch lace).

The dress on the photo is made with viscose fabric. This fabric is medium weight, soft, has good drape and very little stretch. The fiber content is of viscose.

FABRIC AND NOTIONS REQUIREMENTS

IMPORTANT! When purchasing fabric, please account for shrinkage and buy 5% more than required.

Main fabric, 120cm wide, with a directional print, in meters

Height, cm	Size 34	Size 36	Size 38	Size 40	Size 42	Size 44	Size 46	Size 48	Size 50	Size 52
1 (154-160)	1.35	1.35	1.35	1.45	1.45	1.45	1.5	1.6	1.65	1.65
2 (162-168)	1.4	1.4	1.4	1.5	1.5	1.5	1.55	1.65	1.7	1.7
3 (170-176)	1.45	1.45	1.45	1.55	1.55	1.55	1.6	1.7	1.8	1.8
4 (178-184)	1.55	1.55	1.55	1.65	1.65	1.65	1.7	1.8	1.85	1.85

Main fabric, 140cm wide, with a directional print, in meters

Height, cm	Size 34	Size 36	Size 38	Size 40	Size 42	Size 44	Size 46	Size 48	Size 50	Size 52
1 (154-160)	1	1.05	1.1	1.1	1.3	1.35	1.35	1.4	1.5	1.5
2 (162-168)	1.1	1.1	1.15	1.15	1.35	1.4	1.4	1.45	1.55	1.55
3 (170-176)	1.15	1.15	1.2	1.2	1.45	1.45	1.45	1.5	1.65	1.65
4 (178-184)	1.2	1.2	1.25	1.25	1.5	1.55	1.55	1.6	1.7	1.7

2. 0.5-1cm wide elastic

Height, cm	Size 34	Size 36	Size 38	Size 40	Size 42	Size 44	Size 46	Size 48	Size 50	Size 52
1 (154-160)	120	125	130	135	140	150	150	155	160	165
2 (162-168)	120	130	130	140	140	150	150	155	160	165
3 (170-176)	120	130	135	140	140	150	155	155	160	165
4 (178-184)	125	135	135	140	145	150	155	160	165	165



Fully interface the following pieces:

- Placket - cut 2
- Back facing - cut 1 on fold

To interface, put the gluey side of the interfacing (the side that feels rough to the touch) on top of the wrong side of the fabric piece (or a section thereof) and press with the iron. Do not iron the piece, but instead press it section by section, holding it down with the iron a few seconds until that section is adhered and then pressing down the next section. You may use a cotton pressing cloth to protect your iron sole. Once the interfacing process complete, leave the piece on a hard flat surface for 15 minutes for it to cool down.



Mark the darts on the wrong side of the front and back skirt pieces (transfer from pattern pieces).