

# FROM THE FOUNDER OF THE #VIKISEWS BRAND

---

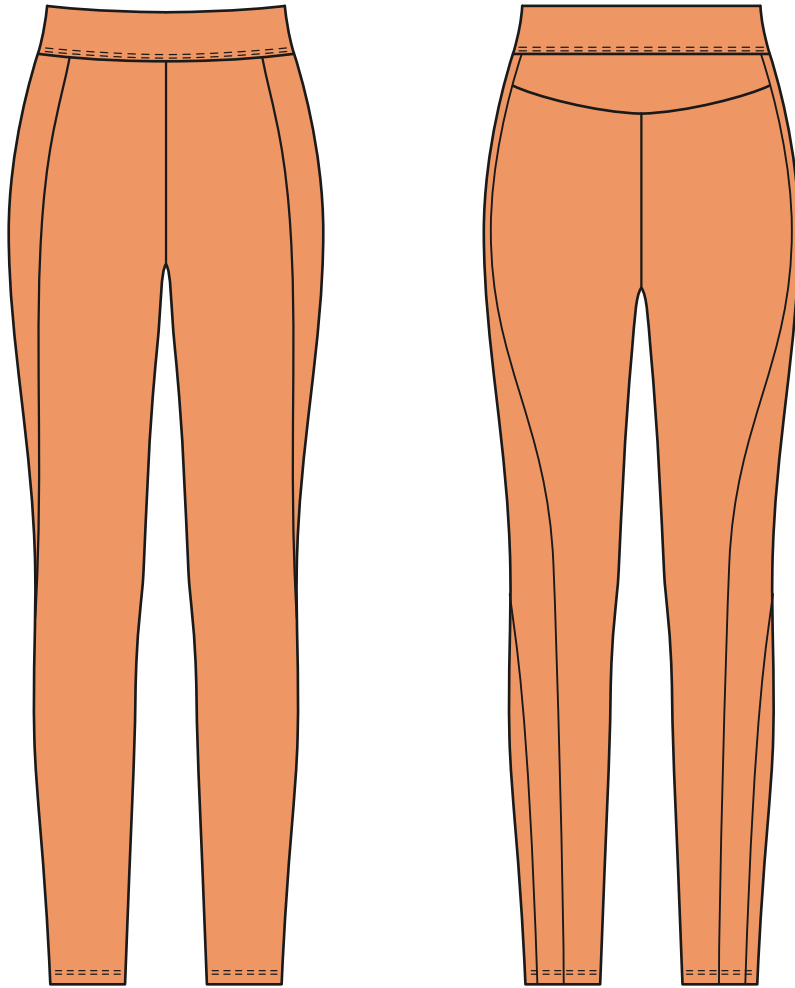


Back in 2016, when I was working on my first set of sewing instructions, I was trying to write them in such a way that even a complete beginner could easily understand and use them to create their very first garment. These instructions laid the foundation for the Vikisews brand, its vision and its mission. I wanted to create modern patterns with the utmost detailed and clear instructions.

Now, with each new collection we are constantly improving our instructions, amending them and adding more relevant details. By the time the final product reaches you, our drafters, correctors, and editors would have spent weeks perfecting every word and every photograph. If you compile a few of our instructions together, you will get a sewing manual that will assist you in sewing all kinds of garments at any difficulty level.

And I would be very happy if these instructions helped you to turn your hobby into a lifelong passion... Enjoy the process! Create your ultimate dream wardrobe! Wear your garments proudly for years to come!

If you have any questions, please contact us at [info@vikisews.com](mailto:info@vikisews.com) - we are always there to help.



## MOLLY PATTERN DESCRIPTION

---

Molly is a pair of close-fitting leggings with a slim fit silhouette. The back features a small yoke. The sides feature curved decorative panels. The leggings have an elastic waistband, and are ankle length.

**Attention!** We recommend printing this pattern in A4 format for paper and money saving purposes.



## IMPORTANT!

---

The contents of this pattern are copyright protected and belong exclusively to VikiSews. You may use VikiSews patterns for personal use. It is prohibited to share VikiSews patterns and instructions with third parties, as well as to publish patterns and instructions online for public access. According to part 1 of clause 1252 and clause 1301 of the Civil Code of the Russian Federation, failure to comply with the mentioned rules constitutes a breach of the legislation in force in the field of copyright and entails liability of the violator. Illegal use or distribution will be prosecuted in accordance with legislation.

You may use VikiSews patterns for commercial use, to sew custom-made garments and/or create fashion collections, on the condition that the patterns are solely used in a manufacturing setting and are not further shared with individuals.

# TOTAL EASE ALLOWANCE

	Waistline ease	Hipline ease
cm	-6	-27.3
inches	-2 3/8	-10 3/4

# GARMENT LENGTH

Height, cm	Garment side length including waistband, cm	Height, ft	Garment side length including waistband, in
1 (154–160)	89.6–91.1	1 (5'1"–5'3")	35 1/4–35 7/8
2 (162–168)	93.9–95.4	2 (5'4"–5'6")	37–37 1/2
3 (170–176)	98.2–99.7	3 (5'7"–5'9")	38 5/8–39 1/4
4 (178–184)	102.5–104	4 (5'10"–6'1")	40 3/8–41

# SUGGESTED FABRIC

To sew these leggings, choose knit fabrics with the following properties:

- Soft, elastic, stretch, medium weight
- The fiber content can include natural fibers (cotton), artificial (viscose), blends (cotton + polyester, cotton + elastane, etc.), and synthetic (polyester, polyester + elastane)
- The following fabrics are recommended: biflex, stretch double knits, interlock knits.

**Attention!** We do not recommend lightweight sheer fabrics (chiffon, organza, stretch lace).

We recommend elastic as an additional material for the waistband.

The leggings in the photo are made of biflex. This fabric is medium weight, soft, and stretch. The fiber content is a blend: polyester + elastane. The waistband is made of elastic.

# PATTERN PIECES LIST

---

## 1. From main fabric:

- back yoke – cut 1 on fold
- back leg – cut 2
- panel – cut 2
- front leg – cut 2

## 2. From additional material:

- waistband (elastic) – cut 1

***IMPORTANT!** Don't forget to transfer all pattern markings and notches onto the fabric.*

# SEAM ALLOWANCES

---

All pattern pieces include seam allowances as follows:

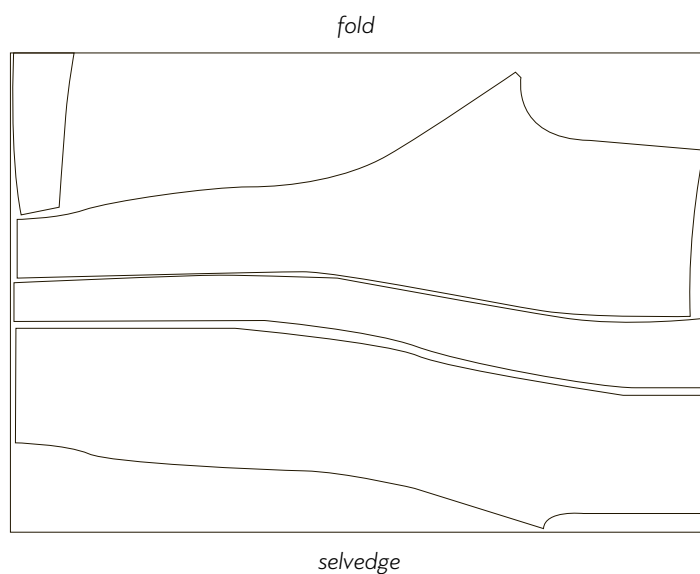
- garment hem allowance – 2 cm (3/4")
- all other edges – 1 cm (3/8")

Take this into account when laying out pattern pieces on the fabric.

# CUTTING LAYOUT

---

Main fabric, 140 cm (55") wide, folded, for all sizes in all heights,  
with a directional print/nap



## READY? LET'S GET SEWING!

---

When sewing this garment, you can't make a toile. You can either make the garment from the main fabric according to the instructions or use chain stitching for construction (if such an option is available). The fitting is done after the construction of the main pieces, namely the back legs and yoke, the panels and front and back legs, and after the elastic waistband and garment hem allowance basting.



Place the back leg pieces right sides together, align the crotch curve, match the notches, and pin. Hand-baste if necessary. Use a very thin needle and light-colored thread (in order to avoid marking the fabric during pressing and steaming) and baste at 1.2–1.5 cm (1/2–5/8") from the edge in order to avoid stitching over the basting thread.

Prior to stitching the pieces on the overlocker, adjust its settings taking the fabric stretch and stitching line tension into account. Pay special attention to the thread! Use textured thread for loopers and extra strong or fine textured Aurora thread for needles. Do not forget to check the stitching line stretch before stitching the pieces together. There should be no breaks but at the same time the stitches should not be seen on the right side between the fabric layers.

Stitch the pieces on a 4-thread overlocker. Overlock with the right leg piece facing up.



Press and steam the garment. Press the seam allowance flat.

**Important!** Take a scrap piece of the main fabric and check what temperature and steam settings of your iron suit your fabric! As biflex which is mostly used to sew leggings is prone to melting due to a high temperature and strong steam shot.