

FROM THE FOUNDER OF THE #VIKISEWS BRAND

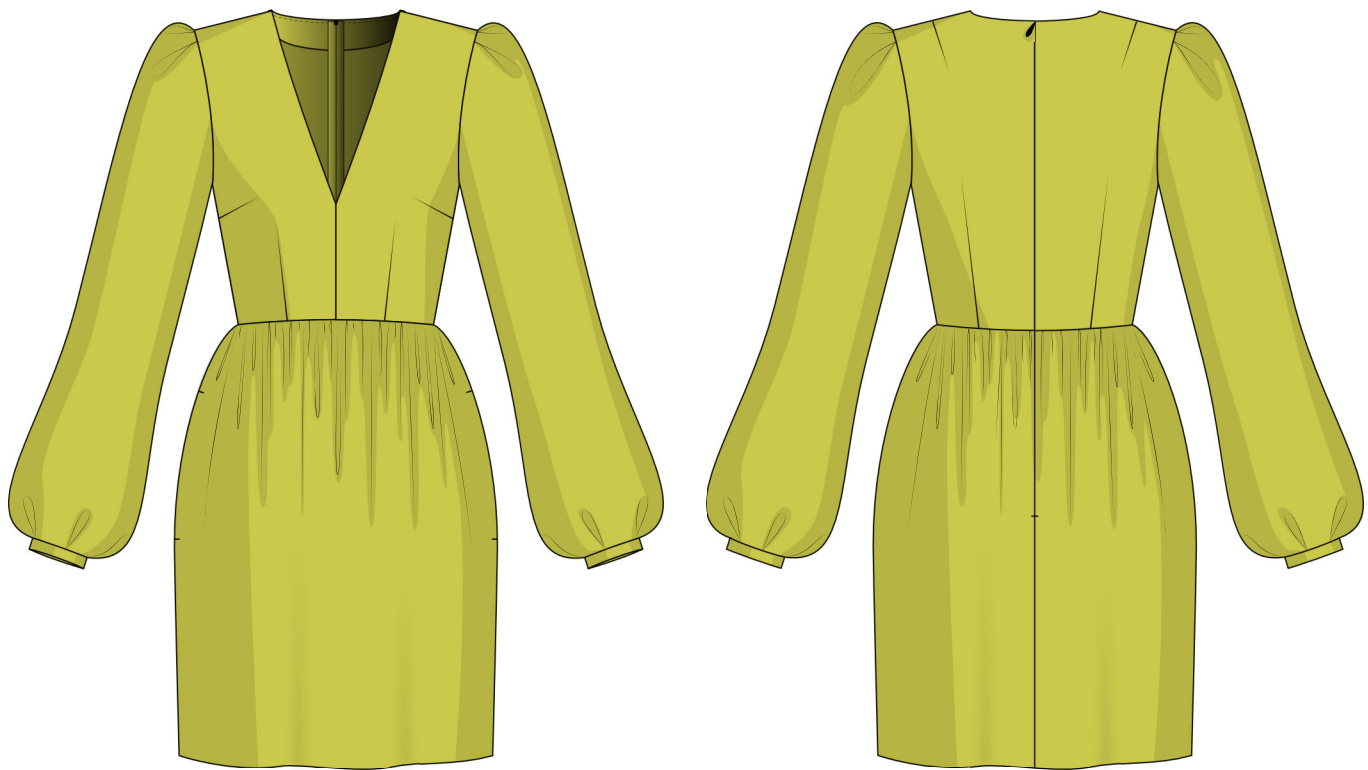


Back in 2016, when I was working on my first set of sewing instructions, I was trying to write them in such a way that even a complete beginner could easily understand and use them to create their very first garment. These instructions laid the foundation for the Vikisews brand, its vision and its mission. I wanted to create modern patterns with the utmost detailed and clear instructions.

Now, with each new collection we are constantly improving our instructions, amending them and adding more relevant details. By the time the final product reaches you, our drafters, correctors, and editors would have spent weeks perfecting every word and every photograph. If you compile a few of our instructions together, you will get a sewing manual that will assist you in sewing all kinds of garments at any difficulty level.

And I would be very happy if these instructions helped you to turn your hobby into a lifelong passion... Enjoy the process! Create your ultimate dream wardrobe! Wear your garments proudly for years to come!

If you have any questions, please contact us at info@vikisews.com — we are always there to help.



VIOLET PATTERN DESCRIPTION

Violet is a dress with a close-fitting bodice and a voluminous skirt. It features a waist seam that sits above the natural waistline. The front bodice features a center seam as well as bust and waist darts. The back bodice features shoulder and waist darts. The dress fastens with an invisible zipper in the center back seam. The skirt is gathered at the waist and features side seam pockets. The dress has a deep V-neckline and long set-in sleeves that are pleated at the caps and hems and finished with narrow cuffs. The front and back of the dress are finished with a free-hanging lining while the sleeves are unlined. Violet is above-knee length.



IMPORTANT!

The contents of this pattern are copyright protected and belong exclusively to Vikisews. You may use Vikisews patterns for personal use. It is prohibited to share Vikisews patterns and instructions with third parties, as well as to publish patterns and instructions online for public access. According to part 1 of clause 1252 and clause 1301 of the Civil Code of the Russian Federation, failure to comply with the mentioned rules constitutes a breach of the legislation in force in the field of copyright and entails liability of the violator. Illegal use or distribution will be prosecuted in accordance with legislation.

You may use Vikisews patterns for commercial use, to sew custom-made garments and/or create fashion collections, on the condition that the patterns are solely used in a manufacturing setting and are not further shared with individuals.

TOTAL EASE ALLOWANCE

	Bust ease	Design line ease (3 cm [1 1/8"] above the waistline)	Hipline ease	Upper arm ease
cm	0.2–1.8	3.1–6.4	38.1–41.1	10.4–14
inches	1/8–3/4	1 1/4–2 1/2	15–16 1/8	4 1/8–5 1/2

GARMENT LENGTH, SLEEVE LENGTH

Height, cm	Back length from waist down (estimated), cm	Sleeve length including cuff, cm
1 (154–160)	43	65.1–67.4
2 (162–168)	46	66.8–68.8
3 (170–176)	49	68.5–70.5
4 (178–184)	52	70.3–72.2
Height, ft	Back length from waist down (estimated), in	Sleeve length including cuff, in
1 (5'1"–5'3")	16 7/8	25 5/8–26 1/2
2 (5'4"–5'6")	18 1/8	26 1/4–27 1/8
3 (5'7"–5'9")	19 1/4	27–27 3/4
4 (5'10"–6'1")	20 1/2	27 5/8–28 3/8

SUGGESTED FABRIC

To sew this dress, choose dress-weight fabrics with the following properties:

- medium weight, with good drape, soft, non-stretch or with very little stretch, opaque
- the fiber content can include natural fibers (wool, silk, cotton, linen), artificial fibers (viscose), blends (wool + silk, wool + polyester, cotton + viscose, etc.), and synthetics (polyester, polyester + elastane)
- the following fabrics are recommended: dress-weight wool, gabardine, suiting, velvet, dress-weight fine wale corduroy, modal

Attention! We do not recommend stretchy (lightweight knits) and lightweight fabrics (chiffon, stretch lace, challis).

For the lining, we recommend artificial fibers (viscose), blends (viscose + elastane, viscose + polyester), or synthetics (polyester, polyester + elastane).

The dress in the photo is made of suiting fabric. The fabric is medium weight, soft, with good drape and very little stretch. The fiber content is a blend of polyester, viscose, and spandex.

The lining is a blend of viscose and polyester.

2. Lining fabric, 140 cm wide, in meters:

Height, cm	Size				
	34-40	42-46	48	50	52
1 (154-160)	0.9	0.9	1.1	1.25	1.35
2 (162-168)	0.9	0.9	1.2	1.3	1.4
3 (170-176)	0.95	0.95	1.25	1.4	1.5
4 (178-184)	1	1.1	1.3	1.45	1.55

Lining fabric, 55" wide, in yards:

Height, ft	Size				
	34-40	42-46	48	50	52
1 (5'1"-5'3")	1	1	1 1/4	1 3/8	1 1/2
2 (5'4"-5'6")	1	1	1 1/4	1 3/8	1 1/2
3 (5'7"-5'9")	1	1	1 3/8	1 1/2	1 5/8
4 (5'10"-6'1")	1 1/8	1 1/4	1 3/8	1 5/8	1 3/4

IMPORTANT! When purchasing fabric, please account for shrinkage and buy 5% more than required.

3. Bias-cut fusible stay tape — 2 m (2 1/8 yd)

4. Lightweight knit or woven interfacing, 140 cm (55") wide, for all sizes in all heights — 0.35 m (3/8 yd)

5. One invisible zipper, 55 cm (21 5/8") long, for all sizes in all heights

6. Tulle for sleeve heads, for all sizes in all heights — 0.3 m (3/8 yd)

7. Matching thread — 5 spools (1 spool for the sewing machine + 4 spools for the overlocker)

TOOLS AND EQUIPMENT

- sewing machine for construction
- overlocker for finishing raw edges. This may be replaced with a stretch overlock stitch or a zigzag stitch on the sewing machine (overlock or zigzag stitch width 2-3 mm, stitch length 2.5 mm)
- stitch-in-the-ditch foot for the sewing machine (optional)
- invisible zipper foot for the sewing machine

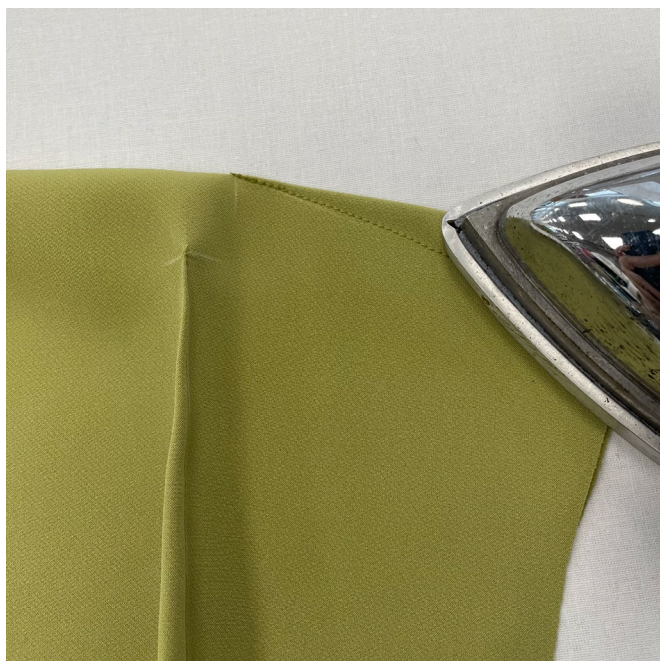
Check for fit issues associated with individual features of the body (for example, an asymmetrical figure with shoulders at different levels, etc.).

Verify the garment volume, there should be enough ease for a comfortable fit.

After the fitting, make changes symmetrically to both sides of the garment; if needed, baste once more for another fitting.



Match the dart legs on the wrong side of the front and back bodice pieces. Pin and machine-stitch along the marked lines, starting at the wide end and moving towards the cross marking. Backstitch at the beginning only, leave long thread tails at the end, tie them into a knot and hide them inside the dart bulk.



For sizes 44-52, trim the bust dart seam allowance down to 1 cm (3/8"). Overlock the edges, with the dart underside facing up.

Press all the darts flat.