

FROM THE FOUNDER OF #VIKISEWS BRAND

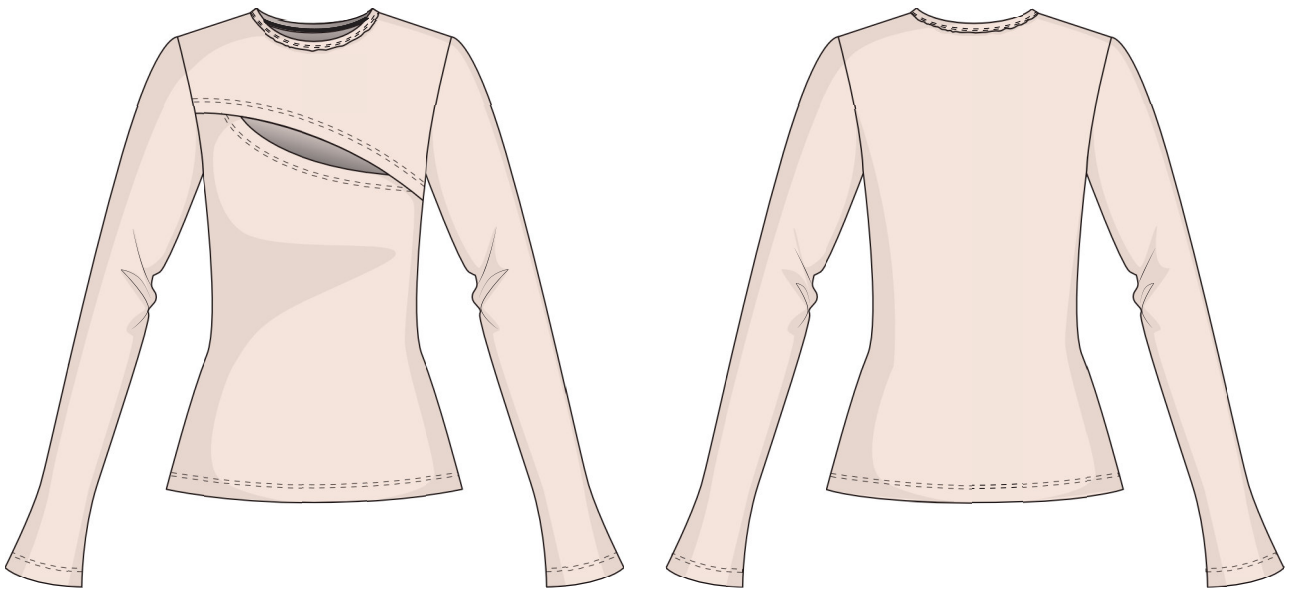


Back in 2016 when I was working on my first sewing manual, I pursued the idea to write that instruction in a simple and clear way. So that even a complete beginner in sewing would be able to understand every step to create the first garment. That first manual was a starting point for my pattern-making brand Vikisews with its mission and vision. I began creating modern patterns with a very detailed step-by-step sewing description.

We are constantly working on our sewing manuals with each new collection coming: adding new details or removing excessive information. Long before, you download our instructions, designers, pattern construction technicians and editors are putting a lot of efforts into each single word and photo. You can combine sewing instructions for different garments, so you get a useful handbook that would help you to sew future garments of any difficulty.

I would be very glad if my sewing manuals would contribute to growing your life-long business out of a small hobby. Don't forget to enjoy sewing! Create your own powerful wardrobe. Wear your self-made garments with honor.

If any questions remain, do not hesitate to contact us via the email info@vikisews.com. We would be glad to help!



TERRY PATTERN DESCRIPTION

Terry Long Sleeve Top pattern with a slim fit silhouette. Front bodice part consists of two pieces. Shaped cutout above the bust level between upper and lower front bodice parts. Sleeves are full arm length. Crew neckline finished with a raw edged neckband. Terry is hip length.



FOR YOUR CONSIDERATION!

Patterns of VikiSews are allowed:

- for personal use. It is prohibited to share VikiSews patterns and sewing instructions with third parties, as well as to publish patterns and instructions online for public access. According to part 1 of clause 1252 and clause 1301 of the Civil Code of the Russian Federation, failure to comply with the mentioned rules constitutes a breach of the legislation in force in the field of copyright and entails liability of the violator. Illegal use or distribution will be prosecuted in accordance with legislation.
- for commercial use, to sew custom-made garments and/or create fashion collections, on the condition that the patterns are solely used in a manufacturing setting and are not further shared with individual parties.

TOTAL EASE ALLOWANCE

Bust ease, cm	Waistline ease, cm	Hipline ease, cm	Upper arm ease, cm
-8.9 to -9	2.1	-7.8	-0.6

GARMENT LENGTH, SLEEVE LENGTH

Height, cm	Garment length at center back, cm	Sleeve length, cm
1 (154-160)	54	60
2 (162-168)	57	62
3 (170-176)	60	64
4 (178-184)	63	66

SUGGESTED FABRIC

Knit fabrics with the following properties are suitable for the Terry Long Sleeve Top:

- soft, stretchy and very stretchy, highly elastic, smooth and textured
- the fibre content can include natural (wool, cotton, silk, bamboo + cotton), artificial (viscose), blends (wool + elastane, cotton + polyester+ nylon, cotton + elastane, cotton + spandex, bamboo + elastane, viscose + elastane) or synthetic (polyester + nylon + elastane, polyester + acrylic)
- the following fabrics are recommended: rib knit jersey, bamboo knit jersey, silk knit jersey, biflex, weft-knit jersey, single knit jersey with a high content of elastane.

Attention! Fabrics must have a certain content of elastic fibers like elastane or spandex.

The Long Sleeve Top on the photo is made of a single-knit jersey. This fabric is lightweight, soft and highly elastic. The fiber content is 90% viscose, 10% elastane. Stretch ratio is 1.7-2.

PATTERN PIECES LIST

1. Main fabric:

- Top front – cut 1
- Bottom front – cut 1
- Back – cut 1 on fold
- Sleeve – cut 2
- Neckband – cut 1

***NOTE!** Don't forget to transfer all pattern markings and notches onto the fabric.*

2. Interfacing:

- Back shoulder seam allowances

Seam allowances are reinforced with strips cut out of interfacing with 1 cm width and the length of the shoulder line (measure on the paper pattern).

SEAM ALLOWANCES

Pattern pieces already include the following seam allowances:

- hem allowance – 3 cm
- sleeve hem allowance – 2cm
- top front bottom edge – 1.5 cm
- bottom front upper edge – 1.5 cm

Please consider this when laying out pattern pieces on the fabric.

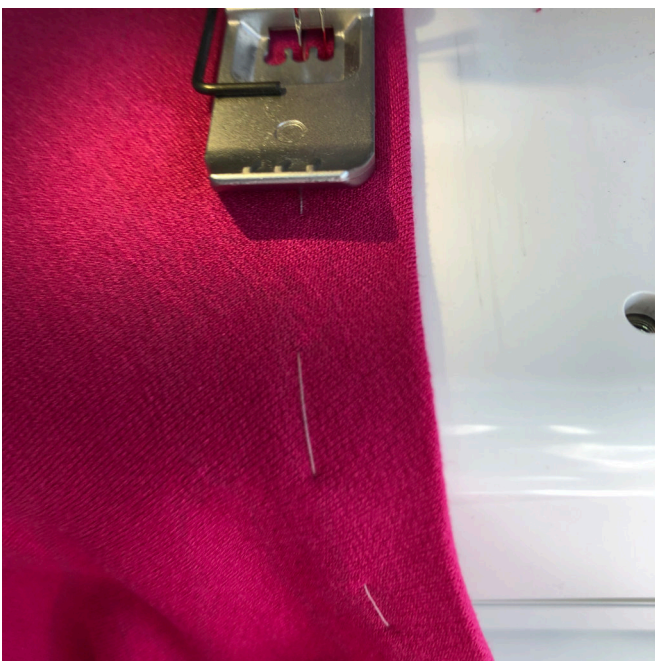
***NOTE!** Pattern pieces which are marked as “face” should be laid out onto the face side of the fabric*



Press the lower edge of the top front to the back side following seam allowance line at 1,5 cm.



Baste seam allowances of the top and bottom fronts at a distance of 3 mm to the edge.



Sew basted seams of the top and bottom fronts using coverstitch machine. Try to position the stitching in such a way that the basting hand stitch is in the middle between coverlock needles.