

FROM THE FOUNDER OF THE #VIKISEWS BRAND

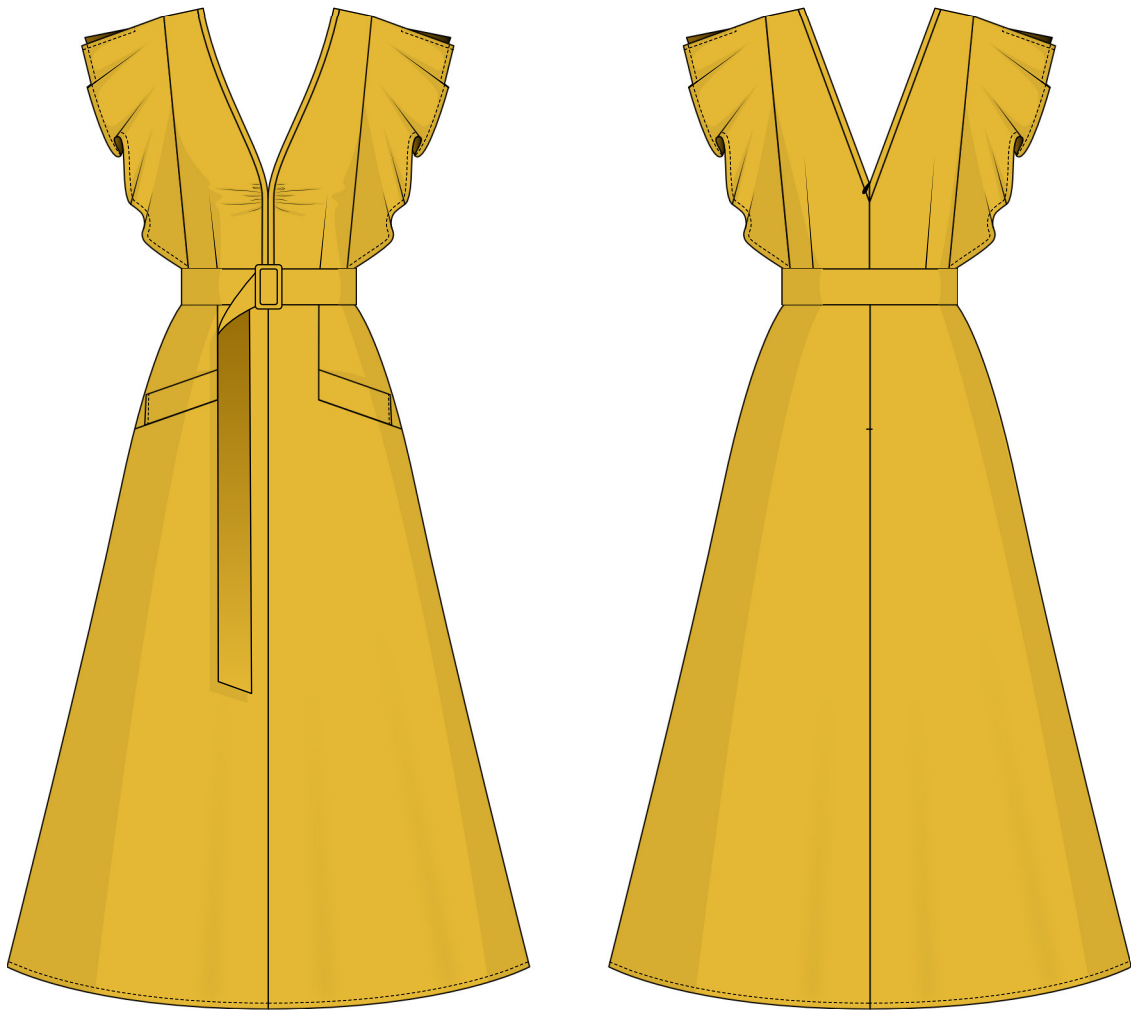


Back in 2016, when I was working on my first set of sewing instructions, I was trying to write them in such a way that even a complete beginner could easily understand and use them to create their very first garment. These instructions laid the foundation for the Vikisews brand, its vision and its mission. I wanted to create modern patterns with the utmost detailed and clear instructions.

Now, with each new collection we are constantly improving our instructions, amending them and adding more relevant details. By the time the final product reaches you, our drafters, correctors, and editors would have spent weeks perfecting every word and every photograph. If you compile a few of our instructions together, you will get a sewing manual that will assist you in sewing all kinds of garments at any difficulty level.

And I would be very happy if these instructions helped you to turn your hobby into a lifelong passion... Enjoy the process! Create your ultimate dream wardrobe! Wear your garments proudly for years to come!

If you have any questions, please contact us at info@vikisews.com — we are always there to help.



FELICIA PATTERN DESCRIPTION

Felicia is a close-fitting dress with an accentuated waist. It features a waist seam and a detachable belt with a fabric-covered buckle. The skirt has a gentle A-line shape. The front bodice features a center seam draped at the bust level. The bodice is fitted with shoulder princess seams both on the front and back. The front and back princess seams feature flounces with shoulder seam slits. The front skirt features a center seam and welt pockets. The dress has a deep V-neckline finished with bias binding and fastens with an invisible zipper in the center back seam. Felicia is mid-calf length.



IMPORTANT!

The contents of this pattern are copyright protected and belong exclusively to Vikisews. You may use Vikisews patterns for personal use. It is prohibited to share Vikisews patterns and instructions with third parties, as well as to publish patterns and instructions online for public access. According to part 1 of clause 1252 and clause 1301 of the Civil Code of the Russian Federation, failure to comply with the mentioned rules constitutes a breach of the legislation in force in the field of copyright and entails liability of the violator. Illegal use or distribution will be prosecuted in accordance with legislation.

You may use Vikisews patterns for commercial use, to sew custom-made garments and/or create fashion collections, on the condition that the patterns are solely used in a manufacturing setting and are not further shared with individuals.

TOTAL EASE ALLOWANCE

	Bust ease	Waistline ease	Hipline ease
cm	6.8–7.1	6.8–8.3	14.5–16.4
inches	2 5/8–2 3/4	2 5/8–3 1/4	5 3/4–6 1/2

GARMENT LENGTH

Height, cm	Garment length from waist down, cm	Height, ft	Garment length from waist down, in
1 (154–160)	77	1 (5'1"–5'3")	30 3/8
2 (162–168)	80	2 (5'4"–5'6")	31 1/2
3 (170–176)	83	3 (5'7"–5'9")	32 5/8
4 (178–184)	86	4 (5'10"–6'1")	33 7/8

SUGGESTED FABRIC

To sew this dress, choose dress-weight fabrics with the following properties:

- medium weight, easily pressed and steamed, soft, non-stretch or with very little stretch, opaque
- the fiber content can include natural fibers (silk, cotton, linen), artificial fibers (viscose, tencel), blends (cotton + silk, linen + silk, cotton + viscose, etc.), and synthetics (polyester, polyester + elastane)
- the following fabrics are recommended: dress-weight viscose, crepe, linen, poplin, satin, silk, cotton eyelet fabric, dress-weight denim

Attention! We do not recommend stretchy knit fabrics and lightweight sheer fabrics (chiffon, organza, stretch lace).

The dress in the photo is made of linen with cotton. The fabric is medium weight, soft, with very little stretch and presses well. The fiber content is linen + cotton + tencel.

2. Interfacing, 140 cm wide, for all heights, in meters:

34	36	38	40	42	44	46	48	50	52
1.17	1.21	1.25	1.3	1.35	1.4	1.45	1.5	1.5	1.55

Interfacing, 55" wide, for all heights, in yards:

34	36	38	40	42	44	46	48	50	52
1 1/4	1 3/8	1 3/8	1 3/8	1 1/2	1 1/2	1 5/8	1 5/8	1 5/8	1 3/4

***IMPORTANT!** When purchasing fabric, please account for shrinkage and buy 5% more than required.*

- 3. One invisible zipper, 50 cm (19 5/8") long, for all sizes in all heights
- 4. Stitched bias-cut fusible stay tape with stitch reinforcement, 1.5 cm (5/8") wide — 1.5 m (1 5/8 yd)
- 5. One buckle, 5 cm (2") in diameter
- 6. Matching thread — 5 spools (1 spool for the sewing machine + 4 spools for the overlocker)

TOOLS AND EQUIPMENT

- sewing machine for construction
- overlocker for finishing raw edges. This may be replaced with a stretch overlock stitch or a zigzag stitch on the sewing machine (overlock or zigzag stitch width 2–3 mm, stitch length 2.5 mm)
- stitch-in-the-ditch foot for the sewing machine (optional)
- invisible zipper foot for the sewing machine
- one-sided foot for the sewing machine to attach the buckle
- bias tape maker



Fully interface the following pieces:

- belt — 1 piece
- welt — 2 pieces

Partially interface the following pieces:

- pocket area on the front skirt pieces

Apply bias-cut fusible stay tape to the following:

- pocket seam allowance on the front skirt pieces
- zipper seam allowance on the back bodice and back skirt pieces

Apply the fusible stay tape along the edge so that the reinforcement stitches on the tape align with the pocket and zipper seam lines.

We recommend testing your interfacing and fusible stay tape on a scrap of fabric before applying it to the main pieces. Check your iron's temperature and steam settings (check if it's safe to use steam on your main fabric). Check how long it takes for the interfacing to bond.

To interface, put the gluey side of the interfacing onto the wrong side of the fabric piece (or a section thereof) and press with the iron. Do not iron the piece, but instead press it section by section, holding it down with the iron for a few seconds until that section is adhered and then pressing down the next section. You may use a cotton pressing cloth to protect your iron sole. Once the interfacing is fused, leave the piece on a hard flat surface for 15 minutes for it to cool down.



Transfer the welt placement line to the side front skirt pieces with hand stitches.

Use light-colored thread in order to avoid marking the fabric during pressing and steaming.