

FROM THE FOUNDER OF THE #VIKISEWS BRAND

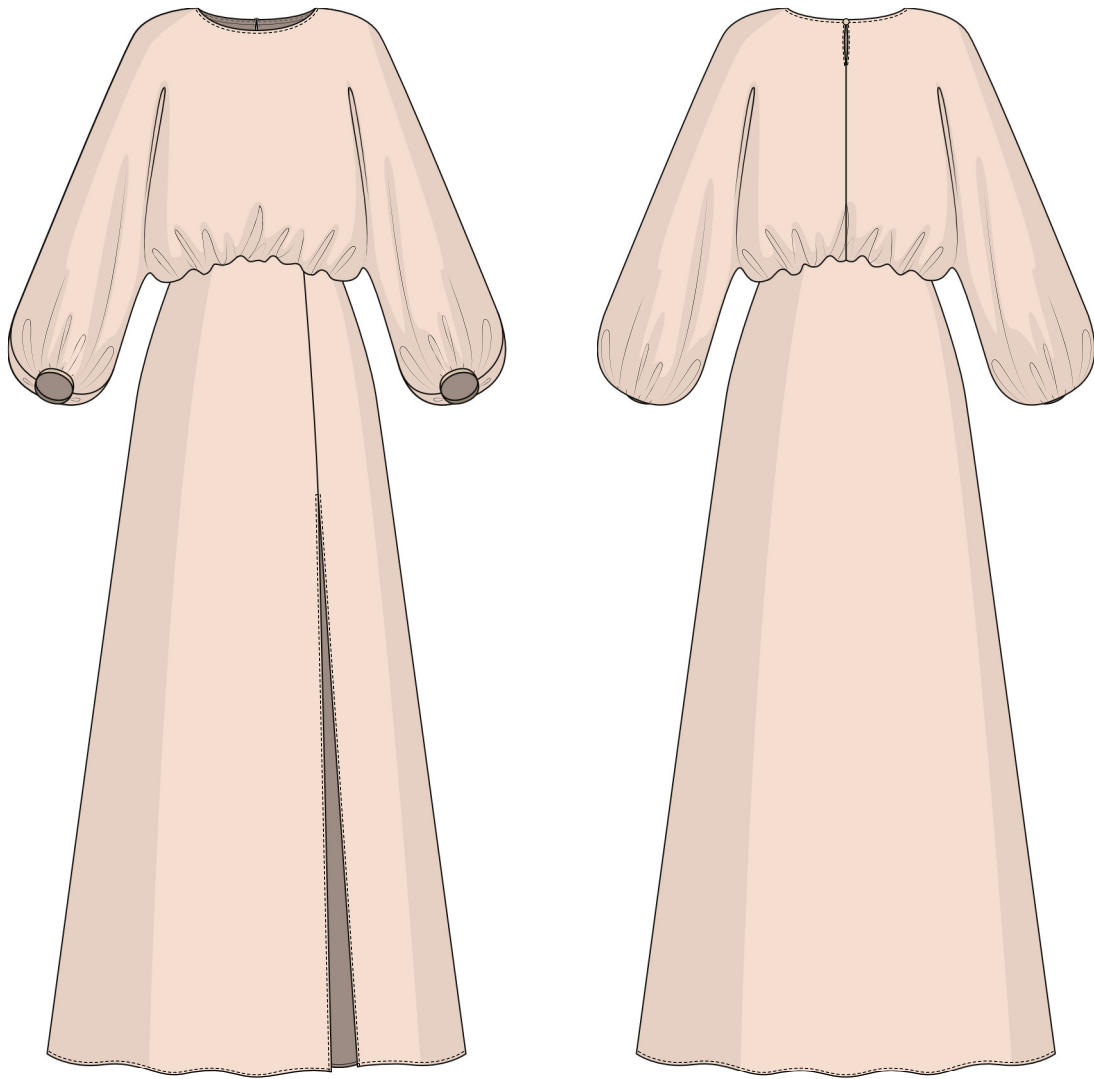


Back in 2016, when I was working on my first set of sewing instructions, I was trying to write them in such a way that even a complete beginner could easily understand and use them to create their very first garment. These instructions laid the foundation for the Vikisews brand, its vision and its mission. I wanted to create modern patterns with the utmost detailed and clear instructions.

Now, with each new collection we are constantly improving our instructions, amending them and adding more relevant details. By the time the final product reaches you, our drafters, correctors, and editors would have spent weeks perfecting every word and every photograph. If you compile a few of our instructions together, you will get a sewing manual that will assist you in sewing all kinds of garments at any difficulty level.

And I would be very happy if these instructions helped you to turn your hobby into a lifelong passion... Enjoy the process! Create your ultimate dream wardrobe! Wear your garments proudly for years to come!

If you have any questions, please contact us at info@vikisews.com — we are always there to help.



FLAVIA PATTERN DESCRIPTION

Flavia is a bias-cut dress with an accentuated waist. The loose-fitting bodice is gathered along the waist seam. The round neckline has a keyhole opening and a button and button loop closure at the back. The full grown-on sleeves are gathered at the bottom into narrow cuffs. The skirt of the dress features a high front slit on the left. Flavia is floor-length.



IMPORTANT!

The contents of this pattern are copyright protected and belong exclusively to Vikisews. You may use Vikisews patterns for personal use. It is prohibited to share Vikisews patterns and instructions with third parties, as well as to publish patterns and instructions online for public access. According to part 1 of clause 1252 and clause 1301 of the Civil Code of the Russian Federation, failure to comply with the mentioned rules constitutes a breach of the legislation in force in the field of copyright and entails liability of the violator. Illegal use or distribution will be prosecuted in accordance with legislation.

You may use Vikisews patterns for commercial use, to sew custom-made garments and/or create fashion collections, on the condition that the patterns are solely used in a manufacturing setting and are not further shared with individuals.

TOTAL EASE ALLOWANCE

	Bust ease	Waistline ease	Hipline ease	Upper arm ease
cm	28.7–29.2	3.5–6.2	7–12.5	28.1–39.2
inches	11 1/4–11 1/2	1 3/8–2 1/2	2 3/4–4 7/8	11 1/8–15 3/8

GARMENT LENGTH, SLEEVE LENGTH

Height, cm	Garment length from waist down, cm	Sleeve length including shoulder and cuff width, cm
1 (154–160)	105.5	59.6–62.3
2 (162–168)	109.5	61.6–64.3
3 (170–176)	113.5	64.6–67.3
4 (178–184)	117.5	67.6–70.3

Height, ft	Garment length from waist down, in	Sleeve length including shoulder and cuff width, in
1 (5'1"–5'3")	41 1/2	23 1/2–24 1/2
2 (5'4"–5'6")	43 1/8	24 1/4–25 3/8
3 (5'7"–5'9")	44 5/8	25 3/8–26 1/2
4 (5'10"–6'1")	46 1/4	26 5/8–27 5/8

SUGGESTED FABRIC

To sew this dress, choose dress-weight fabrics with the following properties:

- moderately lightweight, pliable, soft, non-stretch or low-stretch, opaque
- the fiber content can include natural fibers (silk, cotton, linen), artificial fibers (viscose), blends (viscose + silk, viscose + polyester, cotton + viscose, etc.), and synthetics (polyester, polyester + elastane)
- the following fabrics are recommended: silk, viscose, crepe, satin, challis

Attention! We do not recommend stretchy knit fabrics and crisp, structured fabrics (organza, cotton).

The dress in the photo is made of silk. The fabric is medium weight, fluid, soft and low-stretch. The fiber content is 100% silk.

2. Elastic (for the waist), 1 cm (3/8") wide, for all heights:

Size	34	36	38	40	42	44	46	48	50	52
cm	63.5	67.6	71.6	75.6	80.6	84.6	88.6	94.2	98.2	102.2
inches	25	26 5/8	28 1/4	29 3/4	31 3/4	33 1/4	34 7/8	37 1/8	38 5/8	40 1/4

IMPORTANT! When purchasing fabric, please account for shrinkage and buy 5% more than required.

3. Lightweight knit or woven interfacing, 140 cm (55") wide, for all sizes in all heights — 0.2 m (1/4 yd)

4. One button, 1–1.5 cm (3/8–5/8") in diameter

5. Matching thread — 4 spools (1 spool for the sewing machine + 3 spools for the overlocker)

TOOLS AND EQUIPMENT

- sewing machine for construction
- overlocker for finishing raw edges. This may be replaced with a stretch overlock stitch or a zigzag stitch on the sewing machine (overlock or zigzag stitch width 2–3 mm, stitch length 2.5 mm)
- loop turner
- bias tape maker

PATTERN PIECES LIST

1. From main fabric:

- front bodice — cut 1
- back bodice — cut 2
- right front skirt — cut 1
- left front skirt — cut 1
- back skirt — cut 1
- cuff — cut 2
- neckline binding — cut 1
- rouleau loop — cut 1
- slit reinforcement — cut 1

2. From interfacing:

- cuff — cut 2
- slit reinforcement — cut 1

IMPORTANT! Don't forget to transfer all pattern markings and notches onto the fabric.

Additionally, cut the following pieces from interfacing:

- two strips, 2 cm (3/4") wide, to interface the front slit seam allowances
- two strips, 1.5 cm (5/8") wide, to interface the neckline slit seam allowances

The interfacing strips should be cut on the cross grain (perpendicular to the selvedge).



Place the back bodice pieces right sides together, align the center edges and match the notches. Pin and baste.



Machine-stitch between the slit notch and the bottom edge.

Press the seam flat.



Press the seam allowances open.