

FROM THE FOUNDER OF THE #VIKISEWS BRAND

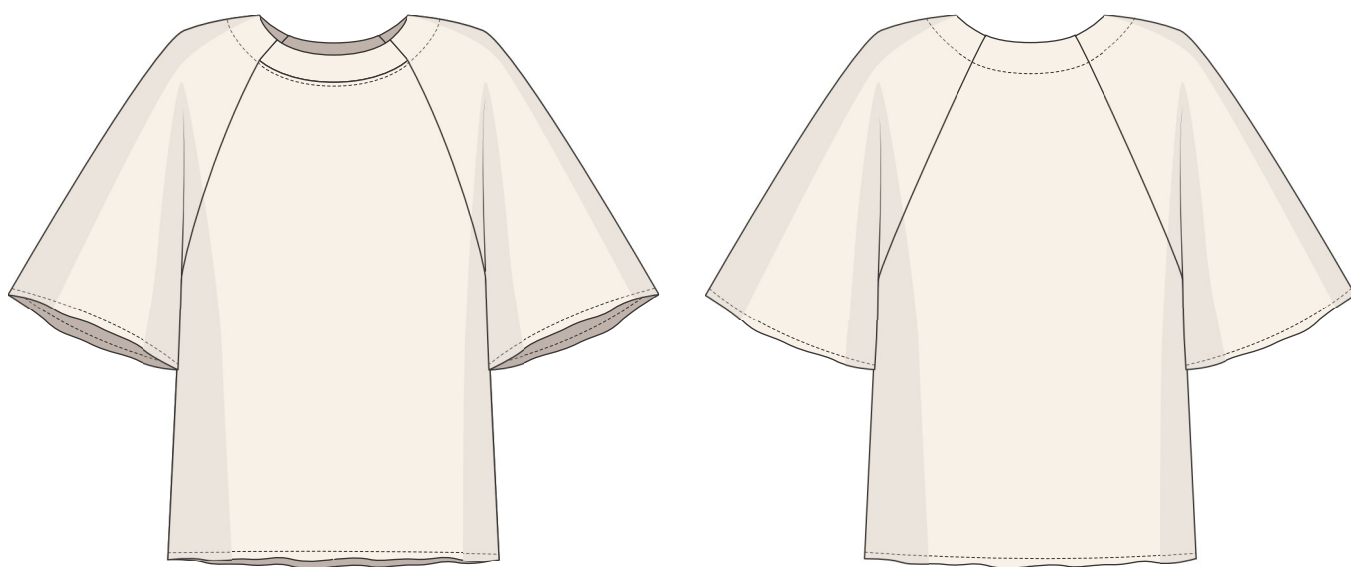


Back in 2016, when I was working on my first set of sewing instructions, I was trying to write them in such a way that even a complete beginner could easily understand and use them to create their very first garment. These instructions laid the foundation for the Vikisews brand, its vision and its mission. I wanted to create modern patterns with the utmost detailed and clear instructions.

Now, with each new collection we are constantly improving our instructions, amending them and adding more relevant details. By the time the final product reaches you, our drafters, correctors, and editors would have spent weeks perfecting every word and every photograph. If you compile a few of our instructions together, you will get a sewing manual that will assist you in sewing all kinds of garments at any difficulty level.

And I would be very happy if these instructions helped you to turn your hobby into a lifelong passion... Enjoy the process! Create your ultimate dream wardrobe! Wear your garments proudly for years to come!

If you have any questions, please contact us at info@vikisews.com — we are always there to help.



ILMA PATTERN DESCRIPTION

Ilma is a loose-fitting T-shirt. It features a round neckline with an insert made of ribbing. The raglan sleeves are loose and above-elbow length. Ilma is hip-length.



IMPORTANT!

The contents of this pattern are copyright protected and belong exclusively to Vikisews. You may use Vikisews patterns for personal use. It is prohibited to share Vikisews patterns and instructions with third parties, as well as to publish patterns and instructions online for public access. **Non-compliance with the mentioned rules is a violation of the US copyright law and may result in civil liability and criminal prosecution.**

You may use Vikisews patterns for commercial use, to sew custom-made garments and/or create fashion collections, on the condition that the patterns are solely used in a manufacturing setting and are not further shared with individuals.

TOTAL EASE ALLOWANCE

	Bust ease (estimated)	Waistline ease (estimated)	Hipline ease	Upper arm ease (estimated)
cm	10.3–25.1	29.6–44.6	7.8–24.3	21.5–35.7
inches	4–9 7/8	11 5/8–17 1/2	3 1/8–9 5/8	8 1/2–14

GARMENT LENGTH, SLEEVE LENGTH

Height, cm	Back length, cm	Sleeve length including shoulder width, cm
1 (154–160)	54.8–56.3	33.7–35
2 (162–168)	57.8–59.3	35.6–37
3 (170–176)	60.8–62.3	37.6–39
4 (178–184)	63.8–65.3	39.6–41

Height, ft	Back length, in	Sleeve length including shoulder width, in
1 (5'1"–5'3")	21 5/8–22 1/8	13 1/4–13 3/4
2 (5'4"–5'6")	22 3/4–23 3/8	14–14 5/8
3 (5'7"–5'9")	23 7/8–24 1/2	14 3/4–15 3/8
4 (5'10"–6'1")	25 1/8–25 3/4	15 5/8–16 1/8

SUGGESTED FABRIC

To sew this T-shirt, choose knit fabrics with the following properties:

- medium or heavyweight, non-stretch or low-stretch, structured
- the fabric content can include natural fibers (cotton), artificial fibers (viscose), blends (cotton + polyester, cotton + elastane, viscose + polyester, etc.), and synthetics (polyester, polyester + elastane)
- the following fabrics are recommended: lightweight sweatshirting, French terry, jersey

Attention! We do not recommend lightweight fabrics.

As an additional fabric for the front neckband, we recommend choosing ribbing.

TOOLS AND EQUIPMENT

- sewing machine for construction
- overlocker for construction and finishing raw edges. It can be replaced with a stretch overlock stitch or a zigzag stitch on the sewing machine (overlock or zigzag stitch width 2–3 mm, stitch length 2.5 mm)

IMPORTANT! We recommend using specialty needles when working with knit fabrics (for example, STRETCH, SUPER STRETCH, JERSEY, etc.). These are ballpoint needles, so they part the threads of the fabric you are stitching rather than piercing them.

PATTERN PIECES LIST

1. From main fabric:

- front — cut 1 on fold
- back — cut 1 on fold
- sleeve — cut 2
- neck facing — cut 1 on fold

2. From additional fabric:

- front neckband — cut 1

IMPORTANT! Don't forget to transfer all pattern markings and notches onto the fabric.

SEAM ALLOWANCES

All pattern pieces include 1 cm (3/8") seam allowances.
Take this into account when laying out pattern pieces on the fabric.



Press the seams flat.



Press the seam allowances towards the sleeves.



Overlock the bottom edge of the neck facing piece, with the right side facing up.