

# FROM THE FOUNDER OF THE #VIKISEWS BRAND

---

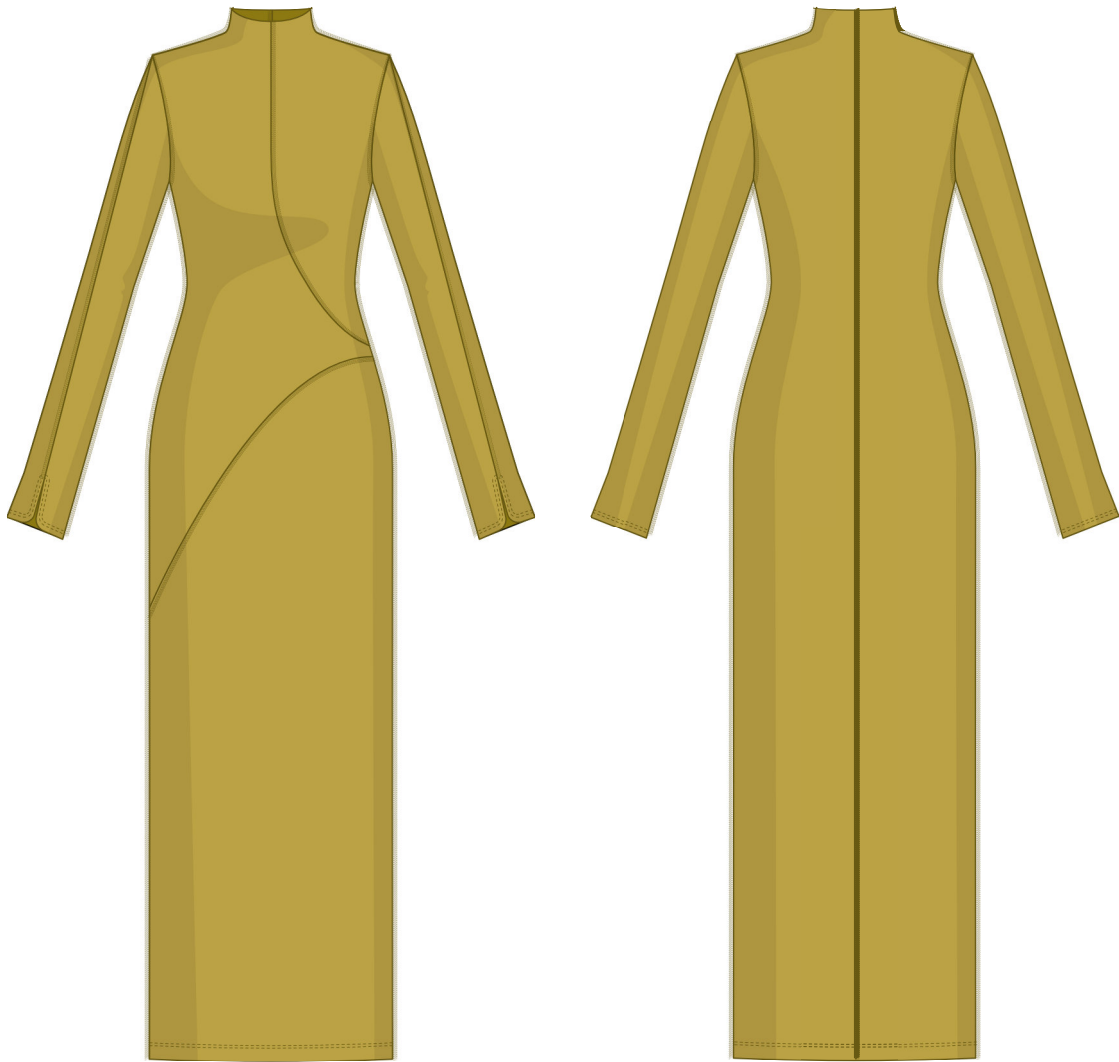


Back in 2016, when I was working on my first set of sewing instructions, I was trying to write them in such a way that even a complete beginner could easily understand and use them to create their very first garment. These instructions laid the foundation for the Vikisews brand, its vision and its mission. I wanted to create modern patterns with the utmost detailed and clear instructions.

Now, with each new collection we are constantly improving our instructions, amending them and adding more relevant details. By the time the final product reaches you, our drafters, correctors, and editors would have spent weeks perfecting every word and every photograph. If you compile a few of our instructions together, you will get a sewing manual that will assist you in sewing all kinds of garments at any difficulty level.

And I would be very happy if these instructions helped you to turn your hobby into a lifelong passion... Enjoy the process! Create your ultimate dream wardrobe! Wear your garments proudly for years to come!

If you have any questions, please contact us at [info@vikisews.com](mailto:info@vikisews.com) — we are always there to help.



## ROXANNE PATTERN DESCRIPTION

---

Roxanne is a close-fitting dress with exposed seams. The dress has a grown-on stand collar and long, two-piece set-in sleeves featuring a shaped hem and a slit. The front of the dress is made up of three shaped pieces. The back features a center seam. Roxanne is midi length.



## IMPORTANT!

---

The contents of this pattern are copyright protected and belong exclusively to Vikisews. You may use Vikisews patterns for personal use. It is prohibited to share Vikisews patterns and instructions with third parties, as well as to publish patterns and instructions online for public access. **Non-compliance with the mentioned rules is a violation of the US copyright law and may result in civil liability and criminal prosecution.**

You may use Vikisews patterns for commercial use, to sew custom-made garments and/or create fashion collections, on the condition that the patterns are solely used in a manufacturing setting and are not further shared with individuals.

# TOTAL EASE ALLOWANCE

	Bust ease	Waistline ease	Hipline ease	Upper arm ease
cm	-18.2 – (-18.7)	-10.4	-12.5	-2.2
inches	-7 1/8 – (-7 3/8)	-4 1/8	-4 7/8	-7/8

# GARMENT LENGTH, SLEEVE LENGTH

Height, cm	Back length from waist down, cm	Sleeve length, cm
1 (154–160)	96.1	63
2 (162–168)	99.1	65
3 (170–176)	102.1	67
4 (178–184)	105.1	69

Height, ft	Back length from waist down, in	Sleeve length, in
1 (5'1"–5'3")	37 7/8	24 3/4
2 (5'4"–5'6")	39	25 5/8
3 (5'7"–5'9")	40 1/4	26 3/8
4 (5'10"–6'1")	41 3/8	27 1/8

# SUGGESTED FABRIC

To sew this dress, choose knit fabrics with the following properties:

- medium weight, soft, stretchy, highly elastic (stretch factor 1.3–1.5)
- the fiber content should include elastane or spandex and can also include natural fibers (wool, cotton), artificial fibers (viscose), blends (wool + polyester, cotton + polyester, etc.), and synthetics (polyester)
- the following fabrics are recommended: rib knits

**Attention!** We recommend using only stretchy fabrics for this dress.

You can determine the stretch factor of your fabric yourself. Mark 10 cm (4") along the crosswise grain of the fabric, lay a ruler next to the marked section and stretch the fabric. Divide the measurement you get by 10.

The dress in the photo is made of rib knit fabric. The fabric is medium weight, soft, and stretchy. The fiber content is a blend of polyester (98%) and spandex (2%). The fabric weight is 400 g/m<sup>2</sup>.

# PATTERN PIECES LIST

---

From main fabric:

- right front — cut 1
- left front — cut 1
- bottom front — cut 1
- back — cut 2
- front sleeve — cut 2
- back sleeve — cut 2

**IMPORTANT!** Don't forget to transfer all pattern markings and notches onto the fabric.

## SEAM ALLOWANCES

---

All pattern pieces include seam allowances as follows:

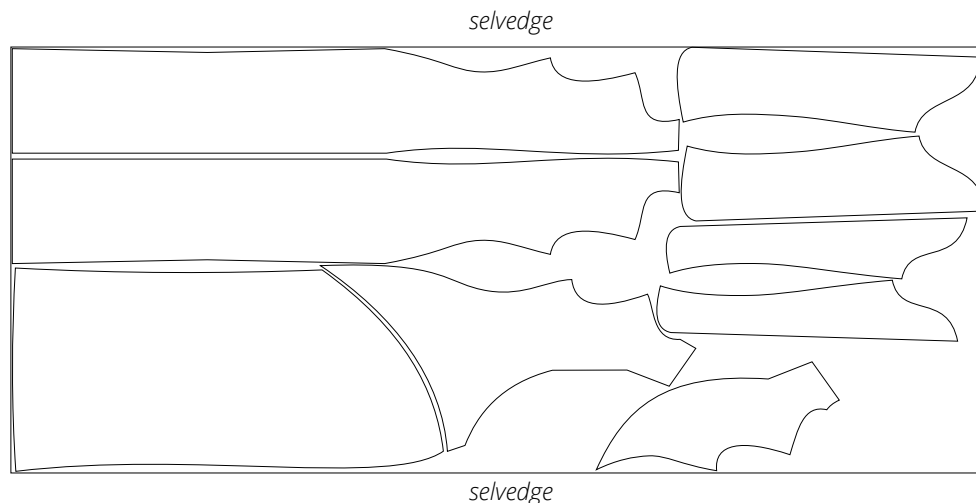
- seam allowance of the grown-on stand collar — 3.5 cm (1 3/8")
- garment hem allowance — 2 cm (3/4")
- all other edges — 1 cm (3/8")

Take this into account when laying out pattern pieces on the fabric.

## CUTTING LAYOUT

---

Main fabric, 100 cm (39") wide, with a directional print/nap, cut on a single layer, for sizes 34–42 in all heights; main fabric, 120 cm (47") wide, with a directional print/nap, cut on a single layer, for sizes 46–52 in all heights







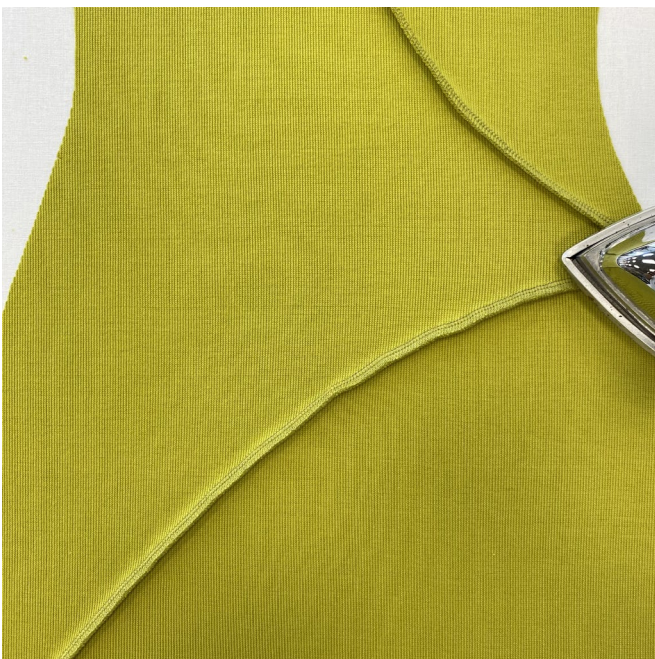
Press the seam flat, and then press the seam allowances towards the right front piece.

**Attention!** In case the edges have stretched out after stitching, press out the extra ease.



Place the top edge of the bottom front piece and the bottom edge of the assembled top front piece wrong sides together. Align the edges and pin.

Stitch the pieces on the overlocker, with the right side of the assembled top front piece facing up.



Press the seam flat, and then press the seam allowances towards the bottom front piece.