

FROM THE FOUNDER OF THE #VIKISEWS BRAND



Back in 2016, when I was working on my first set of sewing instructions, I was trying to write them in such a way that even a complete beginner could easily understand and use them to create their very first garment. These instructions laid the foundation for the Vikisews brand, its vision and its mission. I wanted to create modern patterns with the utmost detailed and clear instructions.

Now, with each new collection we are constantly improving our instructions, amending them and adding more relevant details. By the time the final product reaches you, our drafters, correctors, and editors would have spent weeks perfecting every word and every photograph. If you compile a few of our instructions together, you will get a sewing manual that will assist you in sewing all kinds of garments at any difficulty level.

And I would be very happy if these instructions helped you to turn your hobby into a lifelong passion... Enjoy the process! Create your ultimate dream wardrobe! Wear your garments proudly for years to come!

If you have any questions, please contact us at info@vikisews.com — we are always there to help.



ROMY PATTERN DESCRIPTION

Romy is a loose-fitting lined bomber jacket with a straight cut. The front features welt pockets. The neckline is round. The stand collar is sewn with thick ribbing. The long shirt sleeves are finished with thick ribbing cuffs. The bomber jacket has an applied waistband made of thick ribbing. Romy closes with a separating zipper and is below-hip length.



IMPORTANT!

The contents of this pattern are copyright protected and belong exclusively to Vikisews. You may use Vikisews patterns for personal use. It is prohibited to share Vikisews patterns and instructions with third parties, as well as to publish patterns and instructions online for public access. **Non-compliance with the mentioned rules is a violation of the US copyright law and may result in civil liability and criminal prosecution.**

You may use Vikisews patterns for commercial use, to sew custom-made garments and/or create fashion collections, on the condition that the patterns are solely used in a manufacturing setting and are not further shared with individuals.

TOTAL EASE ALLOWANCE

	Bust ease	Waistline ease	Hipline ease	Upper arm ease
cm	63.9	79.8–80.3	43	30.3–32.2
inches	25 1/8	31 3/8–31 5/8	16 7/8	11 7/8–12 5/8

GARMENT LENGTH, SLEEVE LENGTH

Height, cm	Back length including waistband, cm	Sleeve length including shoulder width and cuff, cm
1 (154–160)	73.6	76.3–78
2 (162–168)	75.6	78.3–80
3 (170–176)	77.6	80.3–82
4 (178–184)	79.6	82.3–84

Height, ft	Back length including waistband, in	Sleeve length including shoulder width and cuff, in
1 (5'1"–5'3")	29	30–30 3/4
2 (5'4"–5'6")	29 3/4	30 7/8–31 1/2
3 (5'7"–5'9")	30 1/2	31 5/8–32 1/4
4 (5'10"–6'1")	31 3/8	32 3/8–33 1/8

SUGGESTED FABRIC

To sew this bomber jacket, choose suiting fabrics with the following properties:

- medium weight, structured, non- or low-stretch
- the fiber content can include natural fibers (cotton), artificial fibers (viscose), blends (cotton + polyester, etc.), and synthetics (polyester)
- the following fabrics are recommended: cotton gabardine, denim, faux leather

Attention! We do not recommend soft and lightweight (outerwear) fabrics.

For the lining, choose lining fabrics made of artificial fibers (viscose), blends (viscose + elastane, viscose + polyester), or synthetics (polyester, polyester + elastane).

TOOLS AND EQUIPMENT

- sewing machine for construction
- stitch-in-the-ditch foot for the sewing machine (optional)
- one-sided foot for the sewing machine

PATTERN PIECES LIST

1. From main fabric:

- front — cut 2
- back — cut 1 on fold
- sleeve — cut 2
- front facing — cut 2
- welt — cut 2
- zipper placket — cut 1
- mid front waistband — cut 2
- pocket facing — cut 2
- back neck facing — cut 1 on fold

2. From lining fabric:

- front lining — cut 2
- back lining — cut 1 on fold
- sleeve lining — cut 2
- pocket top lining — cut 2
- pocket bottom lining — cut 2

3. From additional fabric:

- cuff — cut 2
- collar — cut 1
- waistband — cut 1

4. From interlining fabric:

- cuff — cut 2
- collar — cut 1
- waistband — cut 1

IMPORTANT! Don't forget to transfer all pattern markings and notches onto the fabric.

5. From insulation, 150 g/m²:

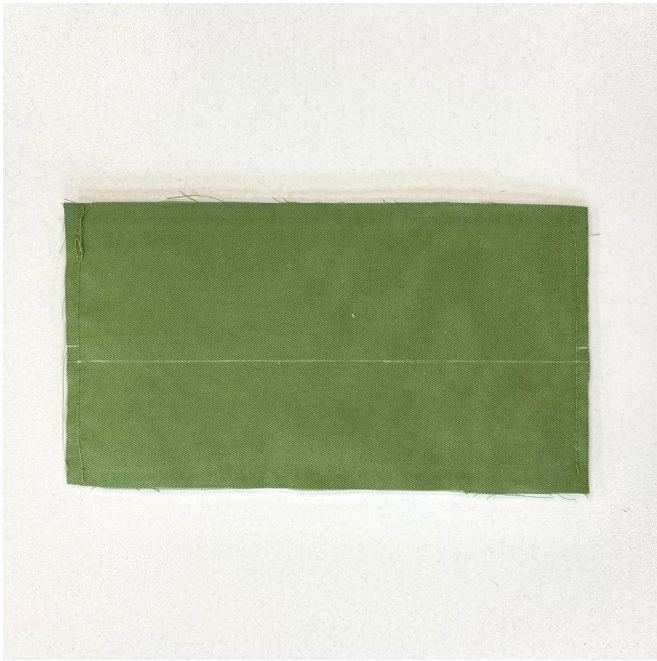
- front — cut 2
- back — cut 1 on fold
- sleeve — cut 2
- welt — cut 2 (½ thickness)
- zipper placket — cut 1 (½ thickness)

6. From interfacing:

- front facing — cut 2
- back neck facing — cut 1 on fold
- mid front waistband — cut 2

Additionally, cut two interfacing strips from interfacing. The length and width of the interfacing strip can be measured on the front pattern piece. The interfacing strip should be cut on the straight grain (parallel to the selvedge).

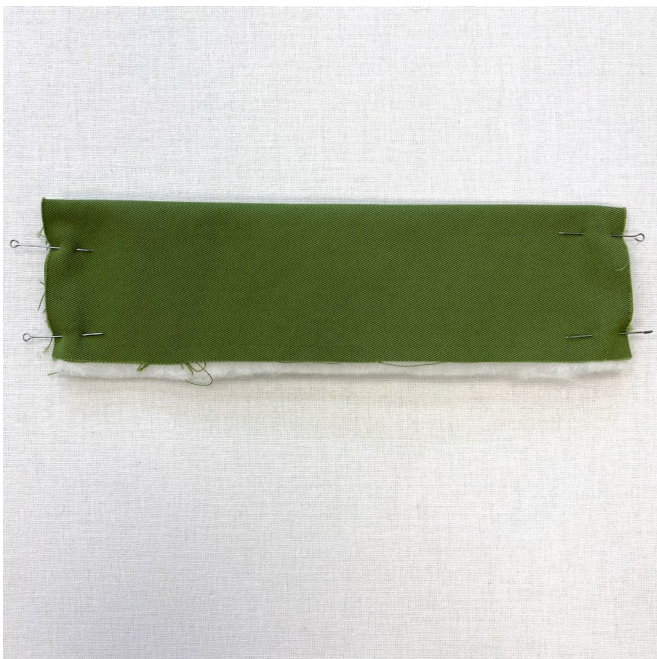
Also, cut two squares with 2 cm (3/4") sides from interfacing to reinforce the neckline seam allowance at the corner on the front pieces.



Using tailor's chalk, mark a line on the right side of the welt piece, at 5 mm (just under 1/4") from the foldline.



Quilt the welt piece with the insulation following the marked line (the quilting line will be on the underside of the welt).



Fold the welt piece in half lengthwise, wrong sides together. Pin along the short edges and machine-stitch along three sides at 7 mm (just over 1/4") from the edge.