

# FROM THE FOUNDER OF THE #VIKISEWS BRAND

---

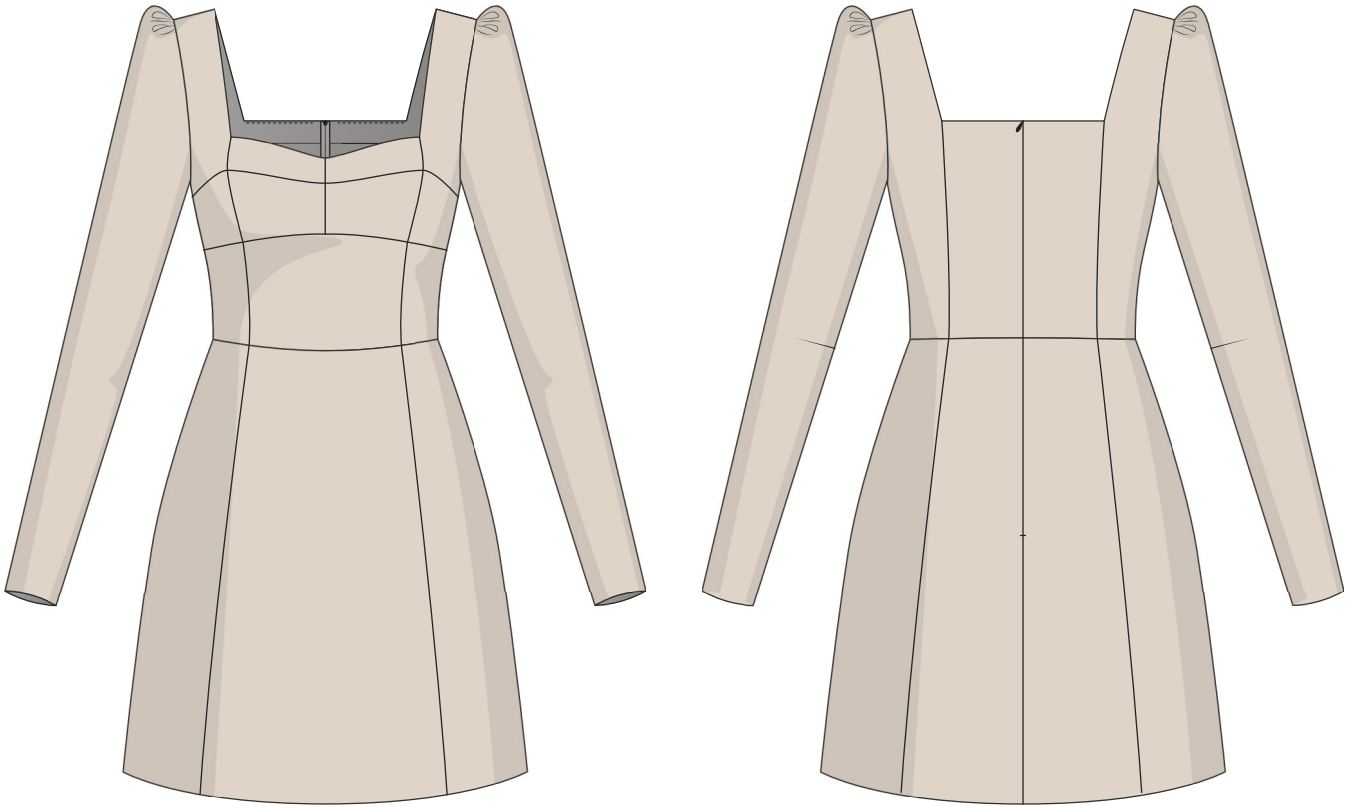


Back in 2016, when I was working on my first set of sewing instructions, I was trying to write them in such a way that even a complete beginner could easily understand and use them to create their very first garment. These instructions laid the foundation for the Vikisews brand, its vision and its mission. I wanted to create modern patterns with the utmost detailed and clear instructions.

Now, with each new collection we are constantly improving our instructions, amending them and adding more relevant details. By the time the final product reaches you, our drafters, correctors, and editors would have spent weeks perfecting every word and every photograph. If you compile a few of our instructions together, you will get a sewing manual that will assist you in sewing all kinds of garments at any difficulty level.

And I would be very happy if these instructions helped you to turn your hobby into a lifelong passion... Enjoy the process! Create your ultimate dream wardrobe! Wear your garments proudly for years to come!

If you have any questions, please contact us at [info@vikisews.com](mailto:info@vikisews.com) — we are always there to help.



## MERYL PATTERN DESCRIPTION

---

Meryl is a close-fitting dress with an accentuated waist. It features a waist seam and an underbust seam. Both the front and back of the dress are fitted with princess seams and have a deep square neckline. The long, set-in sleeves are gathered at the sleeve cap and feature elbow darts. The dress closes with an invisible zipper in the center back seam. Meryl is finished with a free-hanging lining and is above-knee length.



## IMPORTANT!

---

The contents of this pattern are copyright protected and belong exclusively to Vikisews. You may use Vikisews patterns for personal use. It is prohibited to share Vikisews patterns and instructions with third parties, as well as to publish patterns and instructions online for public access. **Non-compliance with the mentioned rules is a violation of the US copyright law and may result in civil liability and criminal prosecution.**

You may use Vikisews patterns for commercial use, to sew custom-made garments and/or create fashion collections, on the condition that the patterns are solely used in a manufacturing setting and are not further shared with individuals.

# TOTAL EASE ALLOWANCE

---

	Bust ease	Waistline ease	Hipline ease	Upper arm ease
cm	3.9-5.4	3-5.1	6-3.8	6.9-4.9
inches	1 1/2-2 1/8	1 1/8-2	2 3/8-1 1/2	2 3/4-1 7/8

# GARMENT LENGTH, SLEEVE LENGTH

---

Height, cm	Garment length from waist down, cm	Sleeve length, cm
1 (154-160)	40.7	63.1
2 (162-168)	43.7	65.1
3 (170-176)	46.7	67.3
4 (178-184)	49.7	69.3
Height, ft	Garment length from waist down, in	Sleeve length, in
1 (5'1"-5'3")	16	24 7/8
2 (5'4"-5'6")	17 1/4	25 5/8
3 (5'7"-5'9")	18 3/8	26 1/2
4 (5'10"-6'1")	19 5/8	27 1/4

# SUGGESTED FABRIC

---

To sew this dress, choose dress-weight fabrics with the following properties:

- medium weight, pliable, non-stretch or low-stretch
- the fiber content can include natural fibers (wool, cotton), artificial fibers (viscose), blends (wool + polyester, cotton + viscose, etc.), and synthetics (polyester)
- the following fabrics are recommended: dress-weight wool, suiting fabrics, gabardine

**Attention!** We do not recommend stretchy knit fabrics and lightweight sheer fabrics (chiffon, organza, stretch lace).

For the lining, choose lining fabrics made of blends (viscose + elastane, viscose + polyester) or synthetics (polyester, polyester + elastane).

The dress in the photo is made of suiting fabric. The fabric is medium weight, pliable, and low-stretch. The fiber content is a blend of viscose and wool. The fabric weight is 340 g/m<sup>2</sup>.

The lining is a blend of viscose and polyester. The weight of the lining fabric is 100 g/m<sup>2</sup>.

The interfacing weight is 30 g/m<sup>2</sup>.

# TOOLS AND EQUIPMENT

---

- sewing machine for construction
- overlocker for finishing raw edges. This may be replaced with a stretch overlock stitch or a zigzag stitch on the sewing machine (overlock or zigzag stitch width 2–3 mm, stitch length 2.5 mm)
- stitch-in-the-ditch foot for the sewing machine (optional)
- invisible zipper foot for the sewing machine
- one-sided foot for the sewing machine
- latch hook or large-eye needle

## PATTERN PIECES LIST

---

### 1. From main fabric:

- top side front bodice — cut 4
- bust cup top center panel — cut 4
- bust cup bottom center panel — cut 4
- bust cup bottom side panel — cut 4
- center midriff — cut 1 on fold
- side midriff — cut 2
- center back bodice — cut 2
- side back bodice — cut 2
- sleeve — cut 2
- center front skirt — cut 1 on fold
- side front skirt — cut 2
- center back skirt — cut 2
- side back skirt — cut 2

### 2. From lining fabric:

- center midriff — cut 1 on fold
- side midriff — cut 2
- center back bodice — cut 2
- side back bodice — cut 2
- center front skirt — cut 1 on fold
- side front skirt — cut 2
- center back skirt — cut 2
- side back skirt — cut 2

***IMPORTANT!** Don't forget to transfer all pattern markings and notches onto the fabric.*

### 3. From interfacing:

- top side front bodice — cut 2
- bust cup top center panel — cut 2
- bust cup bottom center panel — cut 2
- bust cup bottom side panel — cut 2

Additionally, cut two interfacing strips, 2 cm (3/4") wide, to interface the zipper seam allowances. The interfacing strips should be cut on the straight grain (parallel to the selvedge).



Place the center back and side back bodice pieces right sides together, align the princess seam edges, match the notches, and pin. Machine-stitch, backstitching at the beginning and end.



Press the seam flat.



Press the seam allowances open.