

FROM THE FOUNDER OF THE #VIKISEWS BRAND

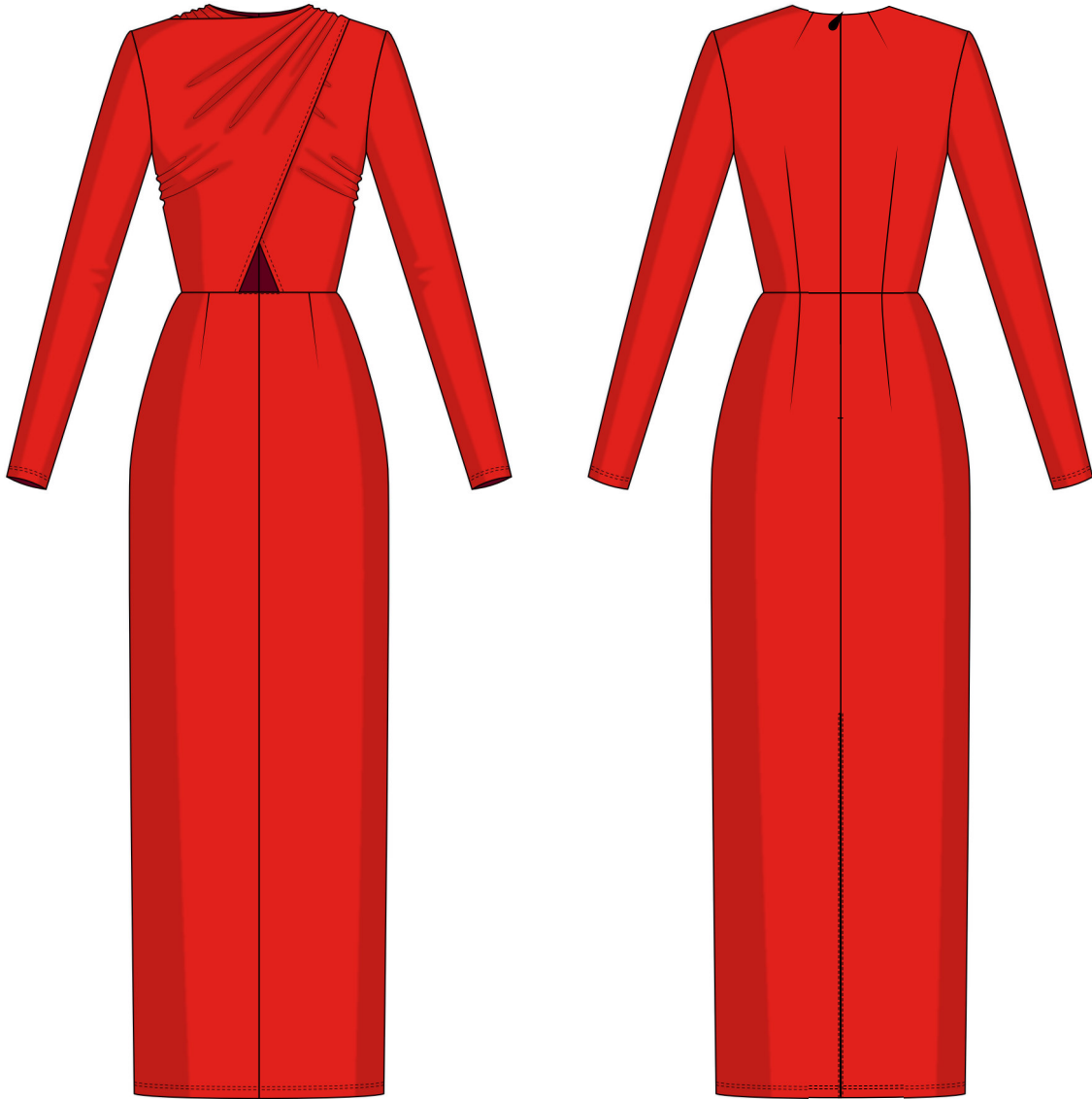


Back in 2016, when I was working on my first set of sewing instructions, I was trying to write them in such a way that even a complete beginner could easily understand and use them to create their very first garment. These instructions laid the foundation for the Vikisews brand, its vision and its mission. I wanted to create modern patterns with the utmost detailed and clear instructions.

Now, with each new collection we are constantly improving our instructions, amending them and adding more relevant details. By the time the final product reaches you, our drafters, correctors, and editors would have spent weeks perfecting every word and every photograph. If you compile a few of our instructions together, you will get a sewing manual that will assist you in sewing all kinds of garments at any difficulty level.

And I would be very happy if these instructions helped you to turn your hobby into a lifelong passion... Enjoy the process! Create your ultimate dream wardrobe! Wear your garments proudly for years to come!

If you have any questions, please contact us at info@vikisews.com — we are always there to help.



EDWINA PATTERN DESCRIPTION

Edwina is a close-fitting dress with a waist seam and long set-in sleeves. The front bodice is gathered at the shoulders and side seams. The bodice also features a criss-cross detail at the bust that forms a shaped cutout above the waist and is secured at the shoulder seams. The back bodice is shaped with shoulder and waist darts. The skirt has a center front seam, as well as front and back waist darts. There is an invisible zipper in the top part of the center back seam and a slit at the bottom. Edwina is below mid-calf length.



IMPORTANT!

The contents of this pattern are copyright protected and belong exclusively to Vikisews. You may use Vikisews patterns for personal use. It is prohibited to share Vikisews patterns and instructions with third parties, as well as to publish patterns and instructions online for public access. **Non-compliance with the mentioned rules is a violation of the US copyright law and may result in civil liability and criminal prosecution.**

You may use Vikisews patterns for commercial use, to sew custom-made garments and/or create fashion collections, on the condition that the patterns are solely used in a manufacturing setting and are not further shared with individuals.

TOTAL EASE ALLOWANCE

	Bust ease (estimated)	Waistline ease	Hipline ease	Upper arm ease
cm	3.8-2.6	1.7-2.8	0-3	0.5
inches	1 1/2-1	5/8-1 1/8	0-1 1/8	1/4

GARMENT LENGTH, SLEEVE LENGTH

Height, cm	Garment length from waist down, cm	Sleeve length, cm
1 (154-160)	91.5	60.6
2 (162-168)	94.5	62.6
3 (170-176)	97.5	64.6
4 (178-184)	100.5	66.6

Height, ft	Garment length from waist down, in	Sleeve length, in
1 (5'1"-5'3")	36	23 7/8
2 (5'4"-5'6")	37 1/4	24 5/8
3 (5'7"-5'9")	38 3/8	25 3/8
4 (5'10"-6'1")	39 5/8	26 1/4

SUGGESTED FABRIC

To sew this garment, choose knit fabrics with the following properties:

- soft, medium-weight, pliable, low-stretch, with medium elasticity
- the fiber content should include elastane or spandex and can also include natural fibers (wool, cotton), artificial fibers (viscose), blends (wool + polyester, cotton + polyester, cotton + elastane, etc.), and synthetics (polyester)
- the following fabrics are recommended: double knits.

Attention! We recommend using only stretchy fabrics for this dress.

The dress in the photos is made of double knit. The fabric is medium-weight, pliable, soft, low-stretch. The fiber content is 95% polyester and 5% spandex. The fabric weight is 350 g/m².

The interfacing weight is 30 g/m².

TOOLS AND EQUIPMENT

- sewing machine for construction
- overlocker for finishing raw edges. It can be replaced with a stretch overlock stitch or a zigzag stitch on the sewing machine (overlock or zigzag stitch width 2–3 mm, stitch length 2.5 mm)
- coverstitch or coverlock machine for finishing the garment hem and sleeve hems. It can be replaced with a twin needle on a regular sewing machine that can do a zigzag stitch.
- invisible zipper foot for the sewing machine
- one-sided foot for the sewing machine
- latch hook. It can be replaced with a large-eye needle.

***IMPORTANT!** We recommend using specialty needles when working with double knit fabrics (for example, STRETCH, SUPER STRETCH, JERSEY, etc.). These are ballpoint needles, so they part the threads of the fabric you are stitching rather than piercing them.*

PATTERN PIECES LIST

1. From main fabric:

- front bodice – cut 2
- back bodice – cut 2
- front skirt – cut 2
- back skirt – cut 2
- sleeve – cut 2
- back neck facing – cut 2.

***IMPORTANT!** Don't forget to transfer all pattern markings and notches onto the fabric.*

2. From interfacing:

- back neck facing – cut 2
- zipper section of the center back seam allowances
- slit section of the center back seam allowances.

To interface the seam allowances, cut strips of interfacing that are 2 cm (3/4") wide and as long as the interfaced section (measure on the pattern). The strips should be cut on the cross grain (perpendicular to the selvedge).

SEAM ALLOWANCES

All pattern pieces include seam allowances as follows:

- garment hem allowance – 2 cm (3/4")
- sleeve hem allowance – 2 cm (3/4")
- front cutout edges – 1.5 cm (5/8")
- front neckline edge – 1–3 cm (3/8–1 1/8")
- center seam allowance on the back bodice – 1.5 cm (5/8")
- center seam allowance on the back skirt – 1.5 cm (5/8")
- all other edges – 1 cm (3/8").

Take this into account when laying out pattern pieces on the fabric.



Tie the thread tails at the dart point into knots and hide them inside the dart bulk using a needle.



Press the dart seam allowances flat.

