

FROM THE FOUNDER OF THE #VIKISEWS BRAND

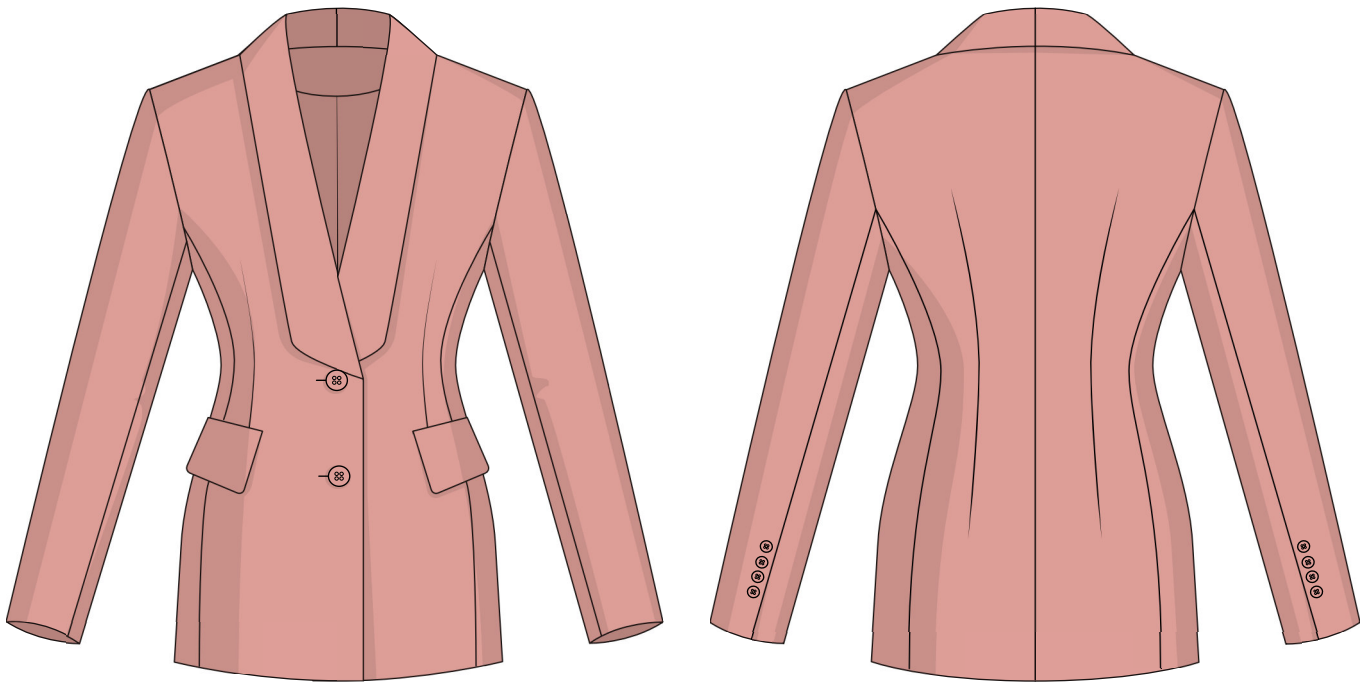


Back in 2016, when I was working on my first set of sewing instructions, I was trying to write them in such a way that even a complete beginner could easily understand and use them to create their very first garment. These instructions laid the foundation for the Vikisews brand, its vision and its mission. I wanted to create modern patterns with the utmost detailed and clear instructions.

Now, with each new collection we are constantly improving our instructions, amending them and adding more relevant details. By the time the final product reaches you, our drafters, correctors, and editors would have spent weeks perfecting every word and every photograph. If you compile a few of our instructions together, you will get a sewing manual that will assist you in sewing all kinds of garments at any difficulty level.

And I would be very happy if these instructions helped you to turn your hobby into a lifelong passion... Enjoy the process! Create your ultimate dream wardrobe! Wear your garments proudly for years to come!

If you have any questions, please contact us at info@vikisews.com — we are always there to help.



ADELAIDE PATTERN DESCRIPTION

Adelaide is a semi-fitted lined blazer with an accentuated waist. There are side panels at the front and back. The back of the blazer is fitted with waist darts as well as with a center seam. The shaping at the front is achieved with vertical bust darts that go down to welt pockets with flaps. The shoulder line is extended. The long, set-in, two-piece sleeves have faux button vents in the elbow seams. Adelaide features a shawl collar with shaped lapels and fastens with buttons and buttonholes at the center front. The blazer is below-hip length.



IMPORTANT!

The contents of this pattern are copyright protected and belong exclusively to Vikisews. You may use Vikisews patterns for personal use. It is prohibited to share Vikisews patterns and instructions with third parties, as well as to publish patterns and instructions online for public access. **Non-compliance with the mentioned rules is a violation of the US copyright law and may result in civil liability and criminal prosecution.**

You may use Vikisews patterns for commercial use, to sew custom-made garments and/or create fashion collections, on the condition that the patterns are solely used in a manufacturing setting and are not further shared with individuals.

TOTAL EASE ALLOWANCE

	Bust ease	Waistline ease	Hipline ease	Upper arm ease
cm	9.8–11.8	7.5–9.6	13.7–14	8.7–9.3
inches	3 7/8–4 5/8	3–3 3/4	5 3/8–5 1/2	3 3/8–3 5/8

GARMENT LENGTH, SLEEVE LENGTH

Height, cm	Back length, cm	Sleeve length, cm
1 (154–160)	66–67.7	63.6–64
2 (162–168)	69–70.7	65.6–66
3 (170–176)	72–73.7	67.6–68
4 (178–184)	75–76.7	69.6–70

Height, ft	Back length, in	Sleeve length, in
1 (5'1"–5'3")	26–26 5/8	25–25 1/4
2 (5'4"–5'6")	27 1/8–27 7/8	25 7/8–26
3 (5'7"–5'9")	28 3/8–29	26 5/8–26 3/4
4 (5'10"–6'1")	29 1/2–30 1/4	27 3/8–27 1/2

SUGGESTED FABRIC

To sew this blazer, choose suiting fabrics with the following properties:

- medium-weight, pliable, structured, non-stretch or low-stretch
- the fabric content can include natural fibers (wool), artificial fibers (viscose), blends (wool + silk, wool + polyester, etc.), and synthetics (polyester)
- the following fabrics are recommended: gabardine, suiting, denim.

Attention! We do not recommend stretchy, soft, lightweight (dress-weight wool) and loosely woven suiting fabrics.

For the lining, choose lining fabrics made of artificial fibers (viscose), blends (viscose + elastane, viscose + polyester), or synthetics (polyester, polyester + elastane).

The blazer in the photo is made of wool suiting. The fabric is medium-weight, pliable, structured, and has very little stretch. The fiber content is a blend of wool (60%) and silk (40%). The fabric weight is 290 g/m².

The fiber content of the lining is a blend of polyester (55%) and viscose (45%). The fabric weight is 130 g/m².

TOOLS AND EQUIPMENT

- sewing machine for construction
- buttonhole foot for the sewing machine.

PATTERN PIECES LIST

IMPORTANT! Cut the main pieces, except for the sleeve pieces, from the fully interfaced fabric. To do this, block fuse a piece of main fabric first, and then cut the pieces out of it.

1. From fully-interfaced main fabric:

- front — cut 2
- side front — cut 2
- back — cut 2
- side back — cut 2
- front facing — cut 2
- back neck facing — cut 1 on fold
- pocket top flap — cut 2
- welt — cut 2
- pocket facing — cut 2.

From non-interfaced main fabric:

- top sleeve — cut 2
- bottom sleeve — cut 2.

2. From lining fabric:

- front lining — cut 2
- back lining — cut 2
- top sleeve lining — cut 2
- bottom sleeve lining — cut 2
- pocket bottom flap — cut 2
- pocket lining — cut 4.

3. From interfacing:

- two strips of interfacing for the pocket areas (measure the area marked on the pattern to find the necessary strip size).

IMPORTANT! Don't forget to transfer all pattern markings and notches onto the fabric.

Additionally, interface the following:

- top sleeve — 2 pieces: interface the sleeve cap and the bottom part of the sleeve (refer to the sections outlined on the pattern when applying interfacing)
- bottom sleeve — 2 pieces: interface the sleeve cap and the bottom part of the sleeve (refer to the sections outlined on the pattern when applying interfacing).

Interface the following sections outlined on the patterns:

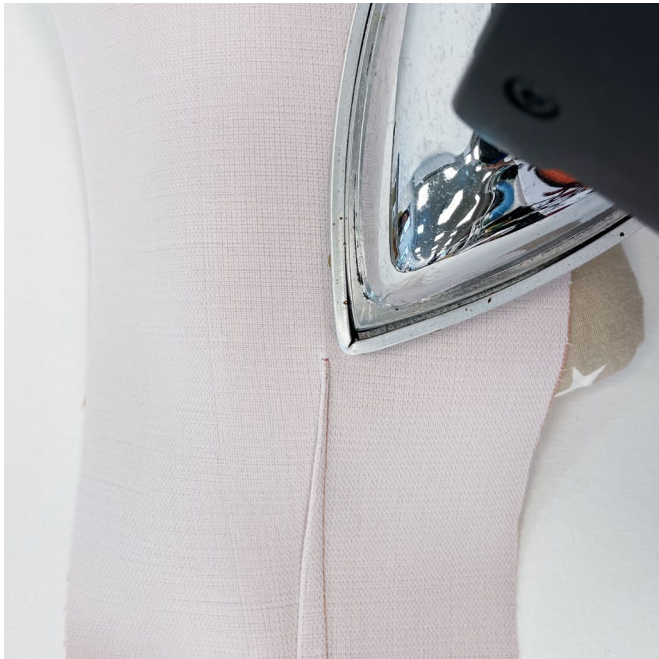
- front (2nd interfacing layer) — 2 pieces
- side front (2nd interfacing layer) — 2 pieces
- back (2nd interfacing layer) — 2 pieces
- side back (2nd interfacing layer) — 2 pieces.

Also, cut four 2.5×2.5 cm (1×1") square pieces to reinforce the clipped sections of the grown-on collar seam allowance on the front and front facing pieces.

The interfacing pieces should be cut on the straight grain (parallel to the selvedge).



Press the darts towards the center back edge.



Press and steam the darts, shrink out the fullness at the dart points on a tailor's ham.



Place the back pieces right sides together, align the center back edges. Match the notches and pin.