

FROM THE FOUNDER OF THE #VIKISEWS BRAND

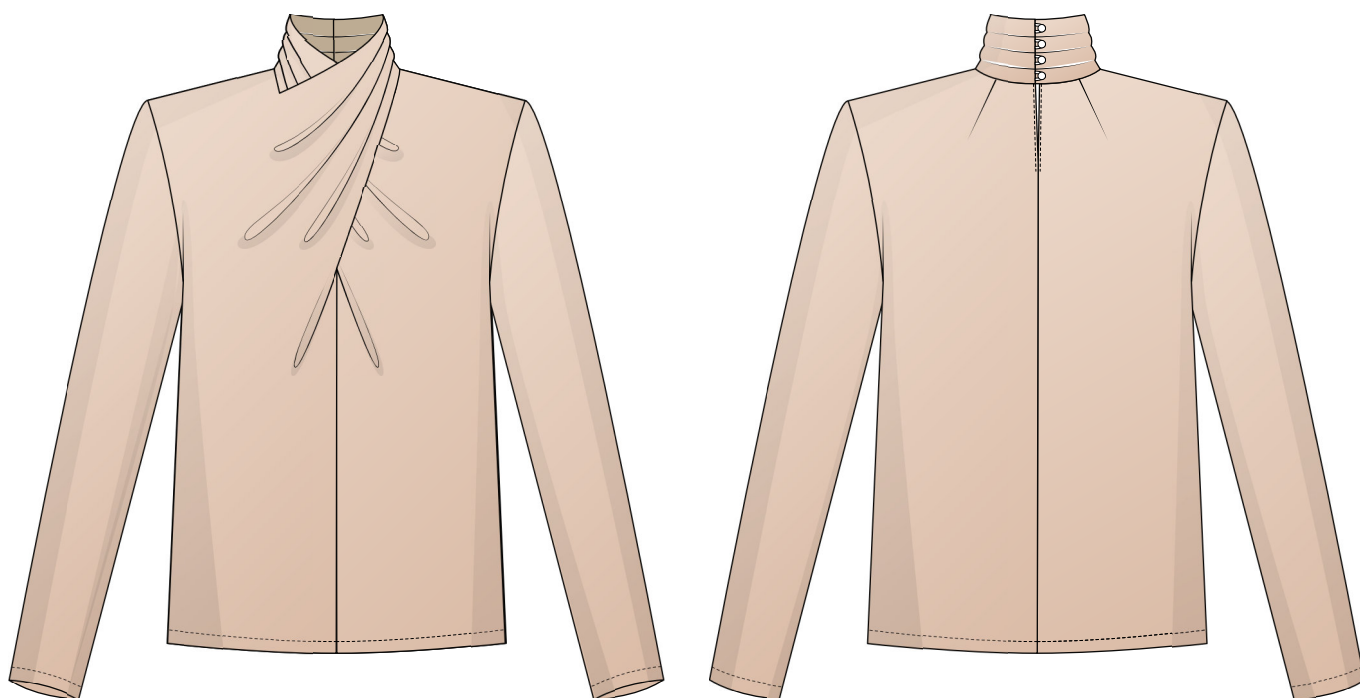


Back in 2016, when I was working on my first set of sewing instructions, I was trying to write them in such a way that even a complete beginner could easily understand and use them to create their very first garment. These instructions laid the foundation for the Vikisews brand, its vision and its mission. I wanted to create modern patterns with the utmost detailed and clear instructions.

Now, with each new collection we are constantly improving our instructions, amending them and adding more relevant details. By the time the final product reaches you, our drafters, correctors, and editors would have spent weeks perfecting every word and every photograph. If you compile a few of our instructions together, you will get a sewing manual that will assist you in sewing all kinds of garments at any difficulty level.

And I would be very happy if these instructions helped you to turn your hobby into a lifelong passion... Enjoy the process! Create your ultimate dream wardrobe! Wear your garments proudly for years to come!

If you have any questions, please contact us at info@vikisews.com — we are always there to help.



SUMAYA PATTERN DESCRIPTION

Sumaya is a semi-fitted blouse with a slightly accentuated waist. The front of the blouse features a slit in the center seam that continues into a crossover draped detail. The front consists of two parts that twist at the bust and transition into the pleated grown-on stand collar. The back of the blouse is shaped with shoulder darts and a center seam. The blouse has a back keyhole opening and a stand collar with a button and rouleau loop closure. The set-in sleeves are long and semi-fitted. Sumaya is hip-length.



IMPORTANT!

The contents of this pattern are copyright protected and belong exclusively to Vikisews. You may use Vikisews patterns for personal use. It is prohibited to share Vikisews patterns and instructions with third parties, as well as to publish patterns and instructions online for public access. **Non-compliance with the mentioned rules is a violation of the US copyright law and may result in civil liability and criminal prosecution.**

You may use Vikisews patterns for commercial use, to sew custom-made garments and/or create fashion collections, on the condition that the patterns are solely used in a manufacturing setting and are not further shared with individuals.

TOTAL EASE ALLOWANCE

	Bust ease	Waistline ease	Hipline ease	Upper arm ease
cm	24.7–23.2	26.1–29.3	7.8–10.1	4.8–6.5
inches	9 3/4–9 1/8	10 1/4–11 1/2	3 1/8–4	1 7/8–2 1/2

GARMENT LENGTH, SLEEVE LENGTH

Height, cm	Back length, cm	Sleeve length, cm
1 (154–160)	61.7–62.7	59–59.5
2 (162–168)	63.7–64.2	61–61.5
3 (170–176)	65.7–66.1	62.9–63.4
4 (178–184)	67.7–68	64.9–65.4

Height, ft	Back length, in	Sleeve length, in
1 (5'1"–5'3")	24 1/4–24 5/8	23 1/4–23 3/8
2 (5'4"–5'6")	25 1/8–25 1/4	24–24 1/4
3 (5'7"–5'9")	25 7/8–26	24 3/4–25
4 (5'10"–6'1")	26 5/8–26 3/4	25 1/2–25 3/4

SUGGESTED FABRIC

To sew this blouse, choose blouse and dress-weight fabrics with the following properties:

- lightweight to medium weight, with good drape, soft, non-stretch or with very little stretch
- the fiber content can include natural fibers (silk, cotton), artificial fibers (viscose), blends (cotton + silk, cotton + viscose, silk + viscose, etc.), and synthetics (polyester)
- the following fabrics are recommended: natural or artificial silk, crepe.

Attention! We do not recommend lightweight, sheer, loosely woven materials (chiffon, stretch lace), heavyweight (satin) and structured fabrics (sateen, organza).

The blouse in the photo is made of artificial silk. The fabric is lightweight, soft, with good drape and very little stretch. The fiber content is 100% polyester. The fabric weight is 230 g/m². The interfacing weight is 30 g/m².

TOOLS AND EQUIPMENT

- sewing machine for construction
- overlocker for finishing raw edges. This may be replaced with a stretch overlock stitch or a zigzag stitch on the sewing machine (overlock or zigzag stitch width 2–3 mm, stitch length 2.5 mm)
- stitch-in-the-ditch foot for the sewing machine (optional)
- loop turner
- press tool for button covering
- latch hook or large-eye needle.

PATTERN PIECES LIST

1. From main fabric:

- front — cut 2
- back — cut 2
- sleeve — cut 2
- front neck facing — cut 2
- rouleau loop — cut 1.

IMPORTANT! Don't forget to transfer all pattern markings and notches onto the fabric.

2. From interfacing:

- front neck facing — cut 2.

Additionally, cut the following pieces from interfacing:

- two strips, 1.3 cm (1/2") wide, to interface the front neckline seam allowances
- two strips, 1.3 cm (1/2") wide, to interface the center seam allowances of the stand collar on the front piece
- two 2.5x2.5 cm (1x1") square pieces to interface the section of the neckline seam allowance on the front piece for attaching the front neck facing.

The interfacing strips should be cut on the straight grain (parallel to the selvedge).

SEAM ALLOWANCES

All pattern pieces include seam allowances as follows:

- garment hem allowance — 3 cm (1 1/8")
- sleeve hem allowance — 3 cm (1 1/8")
- front neckline slit seam allowance — 1.5 cm (5/8")
- grown-on back neck facing — 1.5 cm (5/8")
- all other edges — 1 cm (3/8").

Take this into account when laying out pattern pieces on the fabric.



Tie the thread tails at the dart point into a knot and hide them inside the dart bulk using a needle.



Press the dart seam flat.



Press the darts toward the center back.
Press and steam the darts, shrink out the fullness at the dart points on a tailor's ham.