

FROM THE FOUNDER OF THE #VIKISEWS BRAND

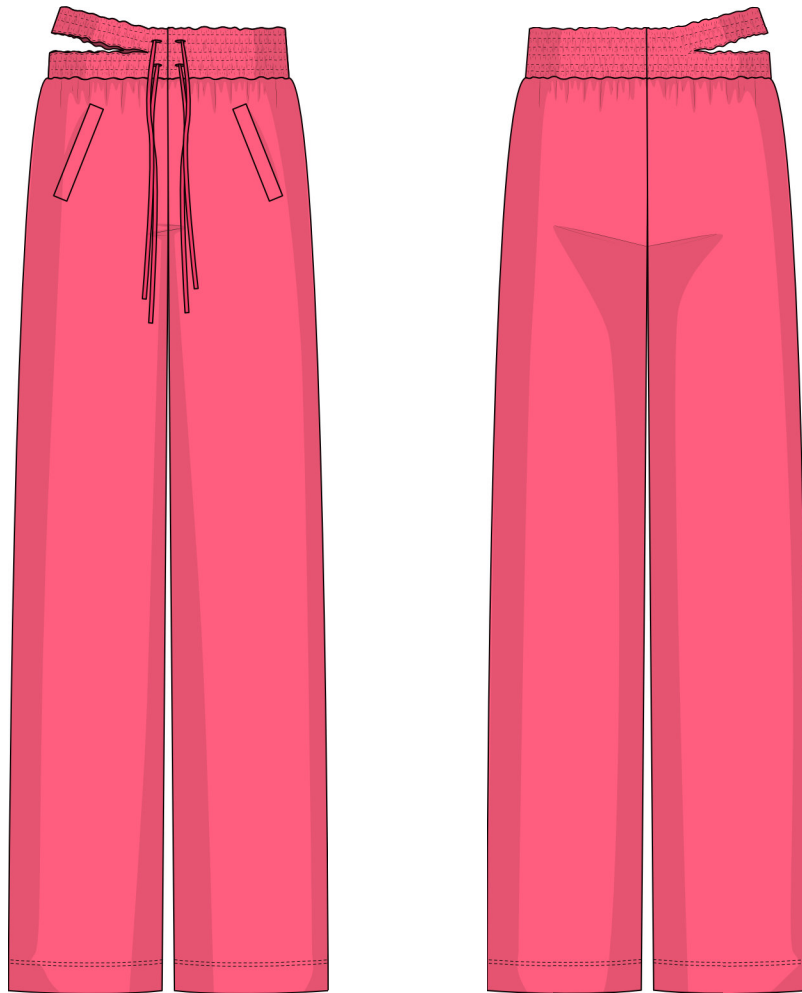


Back in 2016, when I was working on my first set of sewing instructions, I was trying to write them in such a way that even a complete beginner could easily understand and use them to create their very first garment. These instructions laid the foundation for the Vikisews brand, its vision and its mission. I wanted to create modern patterns with the utmost detailed and clear instructions.

Now, with each new collection we are constantly improving our instructions, amending them and adding more relevant details. By the time the final product reaches you, our drafters, correctors, and editors would have spent weeks perfecting every word and every photograph. If you compile a few of our instructions together, you will get a sewing manual that will assist you in sewing all kinds of garments at any difficulty level.

And I would be very happy if these instructions helped you to turn your hobby into a lifelong passion... Enjoy the process! Create your ultimate dream wardrobe! Wear your garments proudly for years to come!

If you have any questions, please contact us at info@vikisews.com — we are always there to help.



TABBY PATTERN DESCRIPTION

Tabby is a pair of straight-cut, semi-fitted pants. The pants do not have side seams and feature front welt pockets. The grown-on, elasticated waistband has a cutout on the right side. The topstitching on the waistband forms two rows of drawstring casings. Tabby is below-ankle length.



IMPORTANT!

The contents of this pattern are copyright protected and belong exclusively to Vikisews. You may use Vikisews patterns for personal use. It is prohibited to share Vikisews patterns and instructions with third parties, as well as to publish patterns and instructions online for public access. **Non-compliance with the mentioned rules is a violation of the US copyright law and may result in civil liability and criminal prosecution.**

You may use Vikisews patterns for commercial use, to sew custom-made garments and/or create fashion collections, on the condition that the patterns are solely used in a manufacturing setting and are not further shared with individuals.

TOTAL EASE ALLOWANCE

	Waistline ease (estimated)	Hipline ease
cm	25.4–31.4	8.5–11.6
inches	10–12 3/8	3 3/8–4 5/8

GARMENT LENGTH

Height, cm	Side seam length including waistband, cm	Height, ft	Side seam length including waistband, in
1 (154–160)	103–104.6	1 (5'1"–5'3")	40 1/2–41 1/8
2 (162–168)	107.1–108.6	2 (5'4"–5'6")	42 1/8–42 3/4
3 (170–176)	111–112.6	3 (5'7"–5'9")	43 3/4–44 3/8
4 (178–184)	115.1–116.6	4 (5'10"–6'1")	45 3/8–45 7/8

FINISHED HEM WIDTH FOR ALL HEIGHTS

Size	34	36	38	40	42	44	46	48	50	52
Width, cm	25.8	26.7	27.6	28.6	29.5	30.4	31.4	32.3	33.3	34.2
Width, in	10 1/8	10 1/2	10 7/8	11 1/4	11 5/8	12	12 3/8	12 3/4	13 1/8	13 1/2

SUGGESTED FABRIC

To sew this garment, choose knit fabrics with the following properties:

- soft, breathable, low or medium-stretch, medium-weight
- the fiber content can include natural fibers (wool, cotton), artificial fibers (viscose), blends (wool + polyester, cotton + polyester, cotton + elastane, etc.), and synthetics (polyester, polyester + elastane)
- the following fabrics are recommended: thick French terry, double knits.

Attention! We do not recommend lightweight, very stretchy knit fabrics.

For the pocket bag, use lightweight knit fabrics made of natural fibers (cotton), or blends (cotton + viscose).

TOOLS AND EQUIPMENT

- sewing machine for construction
- overlocker for construction and finishing raw edges. It can be replaced with a stretch overlock stitch or a zigzag stitch on the sewing machine (overlock or zigzag stitch width 2–3 mm, stitch length 2.5 mm)
- coverstitch or coverlock machine for finishing the garment hem. It can be replaced with a twin needle on a regular sewing machine that can do a zigzag stitch.
- elastic threader (can be replaced with a safety pin)
- buttonhole foot for the sewing machine.

IMPORTANT! We recommend using specialty needles when working with knit fabrics (for example, STRETCH, SUPER STRETCH, JERSEY, etc.). These are ballpoint needles, so they part the threads of the fabric you are stitching rather than piercing them.

PATTERN PIECES LIST

1. From main fabric:

- pant leg – cut 2
- pocket bag – cut 2
- welt – cut 2.

IMPORTANT! Don't forget to transfer all pattern markings and notches onto the fabric.

2. From additional fabric (jersey):

- pocket bag – cut 2.

3. From interfacing:

- welt – cut 2.

Additionally, cut the following from interfacing:

- 2 strips to interface the pocket area on the pant leg piece (measure the area marked on the pattern to find the necessary size)
- 4 strips, 3×5 cm (1 1/8×2"), to interface the buttonhole area of the grown-on waistband on the pant leg piece.

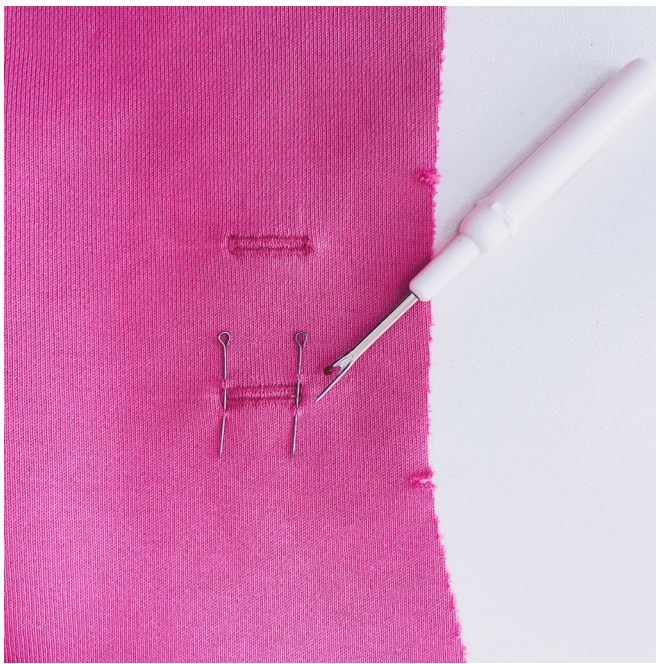
The interfacing strips should be cut on the straight grain (parallel to the selvedge).

SEAM ALLOWANCES

All pattern pieces include seam allowances as follows:

- garment hem allowance – 4 cm (1 5/8")
- all other edges – 1 cm (3/8").

Take this into account when laying out pattern pieces on the fabric.



Machine-stitch the buttonholes using a buttonhole foot.

Insert a pin on each end of the buttonhole to protect the edge from being cut.

Cut the buttonholes open with a seam ripper and press them.



Place the pocket bag cut from the lining fabric onto the pant leg piece wrong sides together, following the pattern markings.

Baste the pocket bag in place along the upper edge so that the seam allowance of the pocket bag extends beyond the bottom waistband stitching line. Baste along the pocket opening.

The pocket is constructed from the pocket bag side.



With the right side facing up, overlock the longest edge of the welt piece.