

FROM THE FOUNDER OF THE #VIKISEWS BRAND

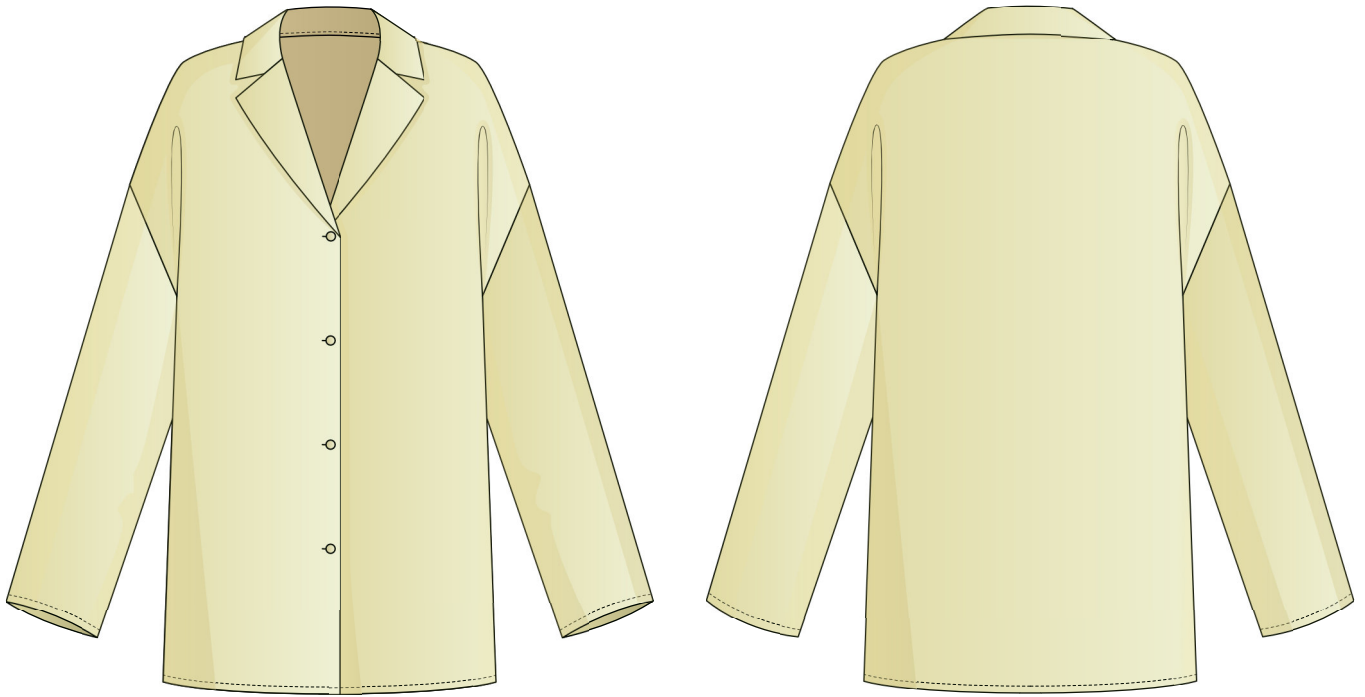


Back in 2016, when I was working on my first set of sewing instructions, I was trying to write them in such a way that even a complete beginner could easily understand and use them to create their very first garment. These instructions laid the foundation for the Vikisews brand, its vision and its mission. I wanted to create modern patterns with the utmost detailed and clear instructions.

Now, with each new collection we are constantly improving our instructions, amending them and adding more relevant details. By the time the final product reaches you, our drafters, correctors, and editors would have spent weeks perfecting every word and every photograph. If you compile a few of our instructions together, you will get a sewing manual that will assist you in sewing all kinds of garments at any difficulty level.

And I would be very happy if these instructions helped you to turn your hobby into a lifelong passion... Enjoy the process! Create your ultimate dream wardrobe! Wear your garments proudly for years to come!

If you have any questions, please contact us at info@vikisews.com — we are always there to help.



SIOBHAN PATTERN DESCRIPTION

Siobhan is a loose-fitting blouse with a straight silhouette. It features a notched turn-down collar, and long, set-in, drop-shoulder sleeves. The blouse fastens with buttons and buttonholes at the center front. Siobhan is below-hip length.



IMPORTANT!

The contents of this pattern are copyright protected and belong exclusively to Vikisews. You may use Vikisews patterns for personal use. It is prohibited to share Vikisews patterns and instructions with third parties, as well as to publish patterns and instructions online for public access. **Non-compliance with the mentioned rules is a violation of the US copyright law and may result in civil liability and criminal prosecution.**

You may use Vikisews patterns for commercial use, to sew custom-made garments and/or create fashion collections, on the condition that the patterns are solely used in a manufacturing setting and are not further shared with individuals.

TOTAL EASE ALLOWANCE

	Bust ease	Waistline ease	Hipline ease	Upper arm ease
cm	43–43.1	60	33.6	8.7–12
inches	16 7/8–17	23 5/8	13 1/4	3 3/8–4 3/4

GARMENT LENGTH, SLEEVE LENGTH

Height, cm	Back length, cm	Sleeve length including shoulder width, cm
1 (154–160)	72.5	71.9
2 (162–168)	74.5	73.8
3 (170–176)	76.5	75.9
4 (178–184)	78.5	77.9

Height, ft	Back length, in	Sleeve length including shoulder width, in
1 (5'1"–5'3")	28 1/2	28 1/4
2 (5'4"–5'6")	29 3/8	29
3 (5'7"–5'9")	30 1/8	29 7/8
4 (5'10"–6'1")	30 7/8	30 5/8

SUGGESTED FABRIC

To sew this blouse, choose blouse and dress-weight fabrics with the following properties:

- lightweight, fluid, soft, non-stretch or with very little stretch, semi-sheer or opaque
- the fiber content can include natural fibers (silk, cotton, linen), artificial fibers (viscose), blends (viscose + silk, viscose + polyester, cotton + viscose, etc.), and synthetics (polyester, polyester + elastane)
- the following fabrics are recommended: natural silk, artificial silk, dress-weight viscose, cupro.

Attention! We do not recommend stretchy knit fabrics.

The blouse in the photo is made of natural silk. The fabric is lightweight, fluid, soft and non-stretch. The fiber content is 100% silk. The fabric weight is 100 g/m².

PATTERN PIECES LIST

1. From main fabric:

- front — cut 2
- back — cut 1 on fold
- sleeve — cut 2
- upper collar — cut 1 on fold
- undercollar — cut 1 on fold
- front facing — cut 2.

Additionally, cut 1.5 cm (5/8") wide strips of interfacing (length according to the pattern) to reinforce the shoulder seam allowances. The interfacing pieces should be cut on the straight grain (parallel to the selvedge).

2. From interfacing:

- upper collar — cut 1 on fold
- undercollar — cut 1 on fold
- front facing — cut 2.

IMPORTANT! Don't forget to transfer all pattern markings and notches onto the fabric.

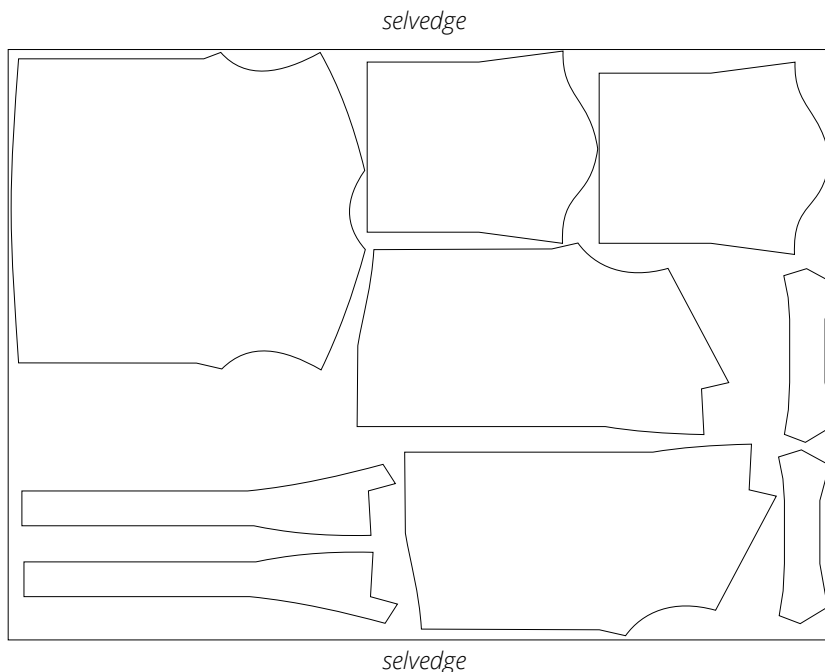
SEAM ALLOWANCES

All pattern pieces include the seam allowances as follows:

- garment hem and sleeve hems — 2.5 cm (1")
- all other edges — 1 cm (3/8")

Take this into account when laying out pattern pieces on the fabric.

Main fabric, 140 cm (55") wide, with a directional print/nap, cut on a single layer, for sizes M–L–XL in all heights; main fabric, 150 cm (59") wide, with a directional print/nap, cut on a single layer, for size XL in all heights





Press the seam allowances open.



Press the seam allowances towards the front.



Overlock the seam allowances together, using a 3-thread narrow overlock stitch. Set the stitch width to 5 mm.

Press.