

FROM THE FOUNDER OF THE #VIKISEWS BRAND



Back in 2016, when I was working on my first set of sewing instructions, I was trying to write them in such a way that even a complete beginner could easily understand and use them to create their very first garment. These instructions laid the foundation for the Vikisews brand, its vision and its mission. I wanted to create modern patterns with the utmost detailed and clear instructions.

Now, with each new collection we are constantly improving our instructions, amending them and adding more relevant details. By the time the final product reaches you, our drafters, correctors, and editors would have spent weeks perfecting every word and every photograph. If you compile a few of our instructions together, you will get a sewing manual that will assist you in sewing all kinds of garments at any difficulty level.

And I would be very happy if these instructions helped you to turn your hobby into a lifelong passion... Enjoy the process! Create your ultimate dream wardrobe! Wear your garments proudly for years to come!

If you have any questions, please contact us at info@vikisews.com — we are always there to help.



ZENDAYA PATTERN DESCRIPTION

Zendaya is a loose-fitting, tiered dress with an A-line silhouette and wide shoulder straps. It has a front neckline casing through which the strap is threaded. At the back, the strap is attached to the garment with buttons and button loops. Zendaya is below-ankle length.



IMPORTANT!

The contents of this pattern are copyright protected and belong exclusively to Vikisews. You may use Vikisews patterns for personal use. It is prohibited to share Vikisews patterns and instructions with third parties, as well as to publish patterns and instructions online for public access. **Non-compliance with the mentioned rules is a violation of the US copyright law and may result in civil liability and criminal prosecution.**

You may use Vikisews patterns for commercial use, to sew custom-made garments and/or create fashion collections, on the condition that the patterns are solely used in a manufacturing setting and are not further shared with individuals.

TOTAL EASE ALLOWANCE

	Bust ease (estimated)	Waistline ease	Hipline ease
cm	16.3–29	95.7–103.5	82.7–91
inches	6 3/8–11 3/8	37 5/8–40 3/4	32 1/2–35 7/8

GARMENT LENGTH

Height, cm	Back length from waist down, cm	Height, ft	Back length from waist down, in
1 (154–160)	106	1 (5'1"–5'3")	41 3/4
2 (162–168)	110	2 (5'4"–5'6")	43 1/4
3 (170–176)	114	3 (5'7"–5'9")	44 7/8
4 (178–184)	118	4 (5'10"–6'1")	46 1/2

SUGGESTED FABRIC

To sew this dress, choose dress-weight fabrics with the following properties:

- medium-weight, pliable, soft, opaque, non-stretch or low-stretch
- the fiber content can include natural fibers (silk, cotton), artificial fibers (viscose), blends (cotton + silk, cotton + viscose, etc.), and synthetics (polyester)
- the following fabrics are recommended: natural or artificial silk, challis.

The dress in the photos is made of challis. The fabric is medium-weight, pliable, soft, and without stretch. The fiber content is 100% viscose. The fabric weight is 150 g/m².

SEAM ALLOWANCES

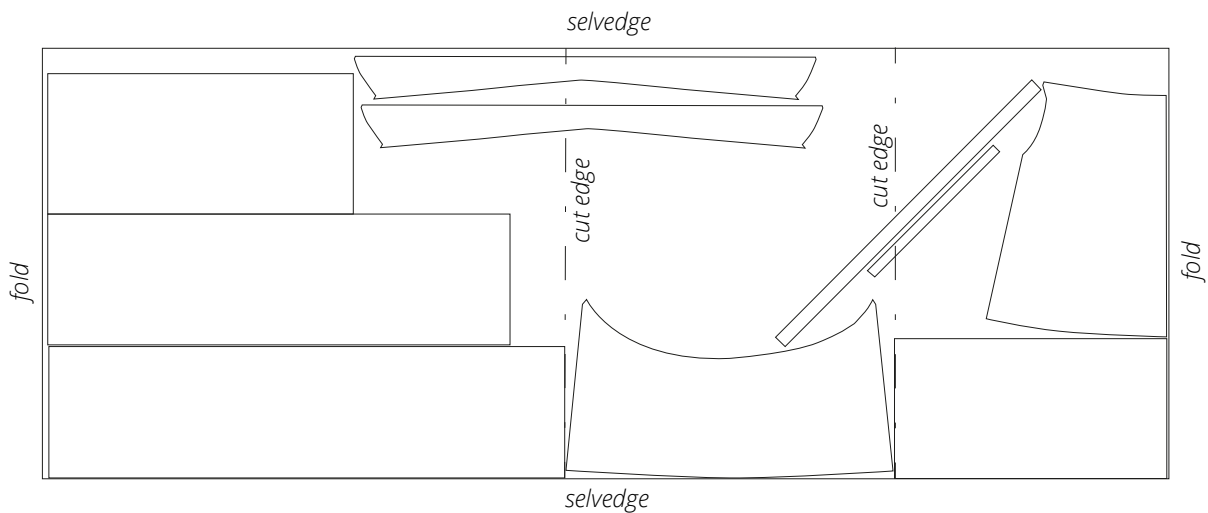
All pattern pieces include seam allowances as follows:

- garment hem allowance – 2 cm (3/4")
- short shaped edges of the top and bottom strap pieces – 4 cm (1 5/8"). Trim these seam allowances down to 1 cm (3/8") after the fitting.
- all other edges – 1 cm (3/8").

Take this into account when laying out pattern pieces on the fabric.

CUTTING LAYOUT

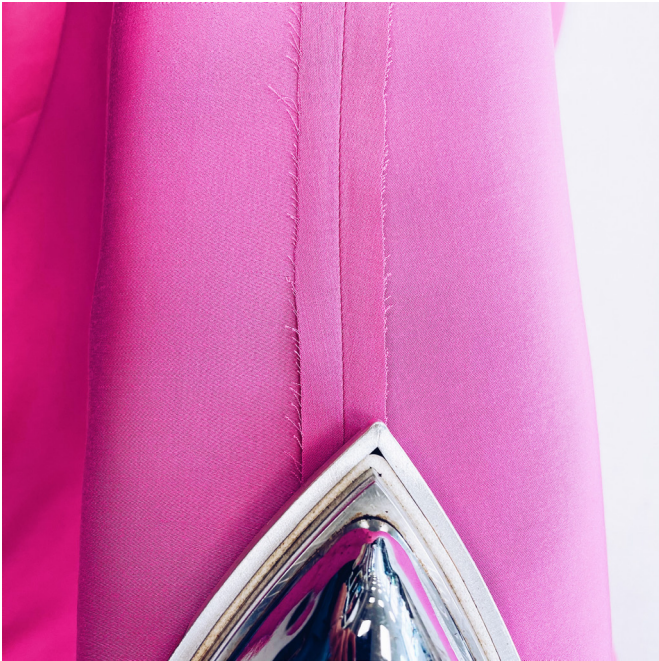
Main fabric, 140 cm (55") wide, cut with two folds on the cross grain,
for all sizes and heights



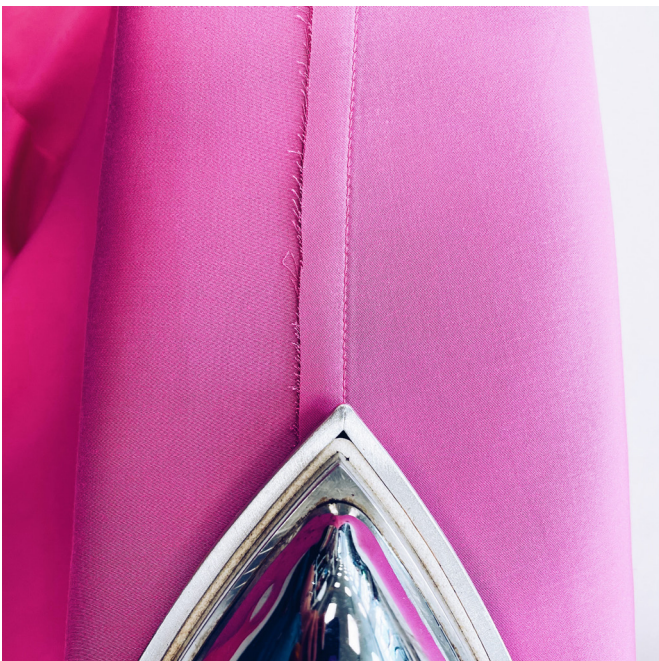
Attention! Cut one each of the bottom strap, top strap, rouleau strap for button loops, and top edge binding on a single layer out of leftover fabric.



Press the seam flat.



Press the seam allowances open.



Press the seam allowances toward the back.