

FROM THE FOUNDER OF THE #VIKISEWS BRAND

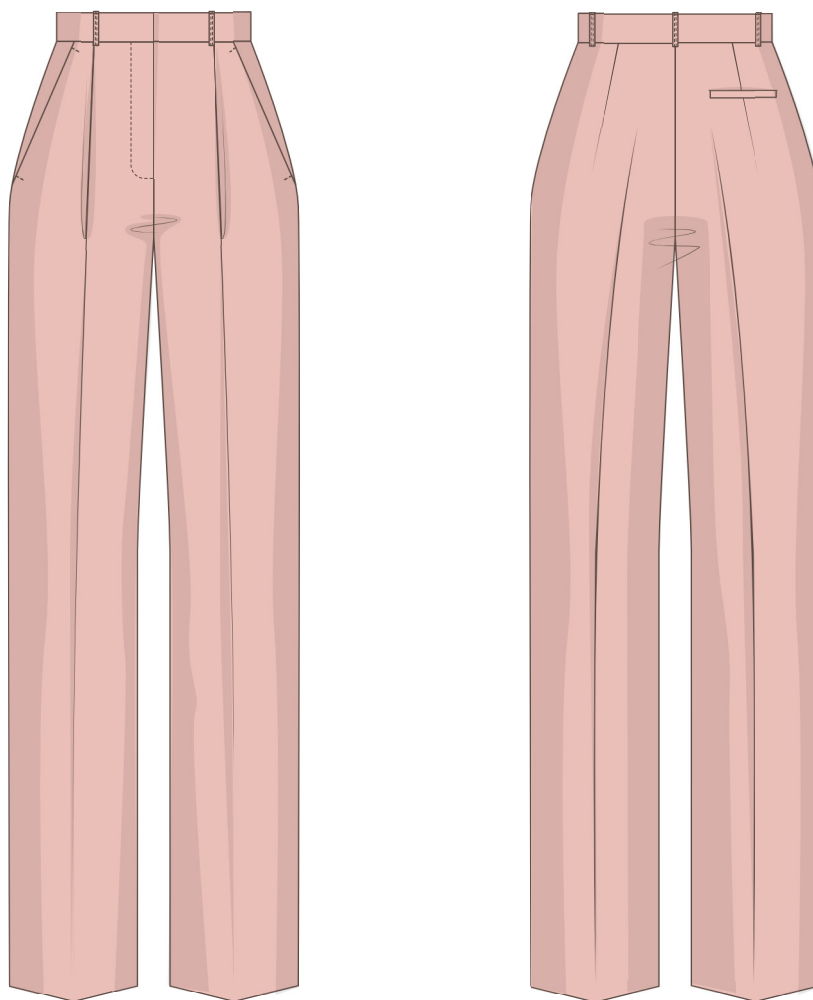


Back in 2016, when I was working on my first set of sewing instructions, I was trying to write them in such a way that even a complete beginner could easily understand and use them to create their very first garment. These instructions laid the foundation for the Vikisews brand, its vision and its mission. I wanted to create modern patterns with the utmost detailed and clear instructions.

Now, with each new collection we are constantly improving our instructions, amending them and adding more relevant details. By the time the final product reaches you, our drafters, correctors, and editors would have spent weeks perfecting every word and every photograph. If you compile a few of our instructions together, you will get a sewing manual that will assist you in sewing all kinds of garments at any difficulty level.

And I would be very happy if these instructions helped you to turn your hobby into a lifelong passion... Enjoy the process! Create your ultimate dream wardrobe! Wear your garments proudly for years to come!

If you have any questions, please contact us at info@vikisews.com — we are always there to help.



HALSEY PATTERN DESCRIPTION

Halsey is a pair of semi-fitted, straight-cut trousers with pressed creases. The back is shaped with waist darts. The front pleats formed at the waistline are directed to the side seams. There are functional front slash pockets and a single back welt pocket on the right side. The waistband sits at the waistline and features belt loops. It fastens with a sew-on hook and bar. The trousers have a fly front zipper closure and are floor length, with a slight break at the bottom.



IMPORTANT!

The contents of this pattern are copyright protected and belong exclusively to Vikisews. You may use Vikisews patterns for personal use. It is prohibited to share Vikisews patterns and instructions with third parties, as well as to publish patterns and instructions online for public access. **Non-compliance with the mentioned rules is a violation of the US copyright law and may result in civil liability and criminal prosecution.**

You may use Vikisews patterns for commercial use, to sew custom-made garments and/or create fashion collections, on the condition that the patterns are solely used in a manufacturing setting and are not further shared with individuals.

TOTAL EASE ALLOWANCE

	Waistline ease	Hipline ease
cm	2–4	4.1–4.9
inches	3/4–1 5/8	1 5/8–1 7/8

GARMENT LENGTH

Height, cm	Side seam length including waistband, cm	Height, ft	Side seam length including waistband, in
1 (154–160)	113.8–115.7	1 (5'1"–5'3")	44 3/4–45 1/2
2 (162–168)	117.9–119.9	2 (5'4"–5'6")	46 3/8–47 1/4
3 (170–176)	122.2–124.3	3 (5'7"–5'9")	48 1/8–48 7/8
4 (178–184)	126.4–128.2	4 (5'10"–6'1")	49 3/4–50 1/2

FINISHED HEM WIDTH

Size	34	36	38	40	42	44	46	48	50	52
cm	21.2	21.6	22	22.4	22.8	23.2	23.6	24	24.4	24.8
inches	8 3/8	8 1/2	8 5/8	8 7/8	9	9 1/8	9 1/4	9 1/2	9 5/8	9 3/4

SUGGESTED FABRIC

To sew these trousers, choose suiting fabrics with the following properties:

- medium weight, pliable, soft, non-stretch or with very little stretch, opaque
- the fiber content can include natural fibers (wool, silk, cotton, linen), artificial fibers (viscose), blends (wool + silk, wool + polyester, cotton + viscose, etc.), and synthetics (polyester, polyester + elastane)
- the following fabrics are recommended: wool suiting, gabardine, crepe, heavyweight silk, linen

Attention! We do not recommend stretchy knit fabrics and lightweight sheer fabrics (blouse-weight silk). For the lining, choose lining fabrics made of artificial fibers (viscose), blends (viscose + elastane, viscose + polyester), or synthetics (polyester, polyester + elastane).

The trousers in the photo are made of suiting fabric. The fabric is medium weight, pliable, soft and with very little stretch. The fabric weight is 290 g/m². The fiber content is a blend of viscose and polyester. The lining's fiber content is a blend of viscose and polyester.

PATTERN PIECES LIST

1. From main fabric:

- front leg — cut 2
- outer pocket facing — cut 2
- inner pocket facing — cut 2
- fly shield — cut 1
- back leg — cut 2
- pocket lining — cut 1
- welt — cut 1
- waistband — cut 1
- belt loop — cut 1 (5 pieces)

2. From lining fabric:

- pocket top lining — cut 2
- pocket bottom lining — cut 2
- pocket lining — cut 1

IMPORTANT! Don't forget to transfer all pattern markings and notches onto the fabric.

3. From interfacing:

- waistband — cut 1
- inner pocket facing — cut 2
- fly shield — cut 2/3 of the piece
- welt — cut 1

Additionally, cut the following from interfacing:

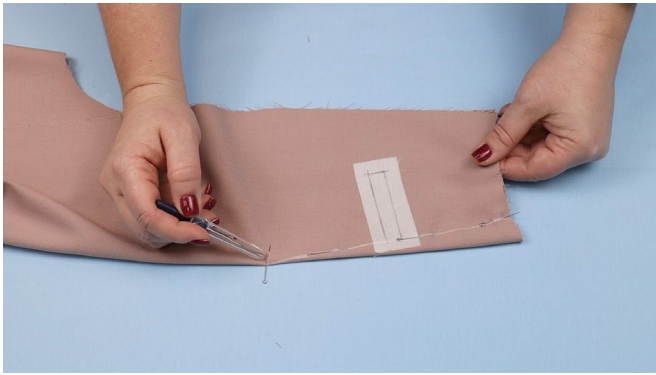
- one strip, 3 cm (1 1/8") wide, to interface the fly extension on the right front leg piece
- one strip, 1.5 cm (5/8") wide, to interface the fly seam allowance on the left front leg piece
- one strip, 4 cm (1 5/8") wide, to interface the pocket opening area on the right back leg piece

SEAM ALLOWANCES

All pattern pieces include seam allowances as follows:

- garment hem allowance — 4 cm (1 5/8")
- side and bottom edges of the pocket lining — 1.5 cm (5/8")
- all other edges — 1 cm (3/8")

Take this into account when laying out pattern pieces on the fabric.



Following the marking, match up the dart legs on the wrong side of the back leg piece and pin.

Machine-stitch the dart, starting at the wide end and moving towards the dart point. Backstitch at the beginning only and leave long thread tails at the end.



Tie the thread tails into a knot at the dart point and hide them inside the dart bulk using a hand sewing needle.



Press the dart flat.



Fold the dart seam allowance towards the crotch seam edge and press in place.



Shrink out the fullness at the dart point on a tailor's ham or board by ironing with a circular motion.