

FROM THE FOUNDER OF THE #VIKISEWS BRAND



Back in 2016, when I was working on my first set of sewing instructions, I was trying to write them in such a way that even a complete beginner could easily understand and use them to create their very first garment. These instructions laid the foundation for the Vikisews brand, its vision and its mission. I wanted to create modern patterns with the utmost detailed and clear instructions.

Now, with each new collection we are constantly improving our instructions, amending them and adding more relevant details. By the time the final product reaches you, our drafters, correctors, and editors would have spent weeks perfecting every word and every photograph. If you compile a few of our instructions together, you will get a sewing manual that will assist you in sewing all kinds of garments at any difficulty level.

And I would be very happy if these instructions helped you to turn your hobby into a lifelong passion... Enjoy the process! Create your ultimate dream wardrobe! Wear your garments proudly for years to come!

If you have any questions, please contact us at info@vikisews.com — we are always there to help.



ELVIRA PATTERN DESCRIPTION

Elvira is a close-fitting dress with an accentuated waist and a slight flare at the bottom. It features a waist seam, a center front seam, and front and back yokes. The bodice of the dress is gathered along the waist and yoke seams at the front and back. There are waist darts on the front and back of the skirt. The long set-in sleeves are made up of two pieces, gathered along the cap, and feature a vent and decorative buttons at the bottom of the front seam. The dress has a deep V-neckline and fastens with an invisible zipper in the side seam. The detachable belt features two loops and fastens with a buckle and grommets. Elvira is below mid-calf length.



IMPORTANT!

The contents of this pattern are copyright protected and belong exclusively to Vikisews. You may use Vikisews patterns for personal use. It is prohibited to share Vikisews patterns and instructions with third parties, as well as to publish patterns and instructions online for public access. **Non-compliance with the mentioned rules is a violation of the US copyright law and may result in civil liability and criminal prosecution.**

You may use Vikisews patterns for commercial use, to sew custom-made garments and/or create fashion collections, on the condition that the patterns are solely used in a manufacturing setting and are not further shared with individuals.

TOTAL EASE ALLOWANCE

	Bust ease	Waistline ease	Hipline ease	Upper arm ease
cm	16.3–18.5	3	3	4.9–6.1
inches	6 3/8–7 1/4	1 1/8	1 1/8	1 7/8–2 3/8

GARMENT LENGTH, SLEEVE LENGTH

Height, cm	Garment length at center back, cm	Sleeve length, cm
1 (154–160)	128.5–128.7	62.2–64.2
2 (162–168)	133.6–133.8	64.2–66.2
3 (170–176)	138.9–139.1	66.2–68.2
4 (178–184)	144.1–144.3	68.2–70.2

Height, ft	Garment length at center back, in	Sleeve length, in
1 (5'1"–5'3")	50 5/8	24 1/2–25 1/4
2 (5'4"–5'6")	52 5/8	25 1/4–26 1/8
3 (5'7"–5'9")	54 5/8–54 3/4	26 1/8–26 7/8
4 (5'10"–6'1")	56 3/4	26 7/8–27 5/8

SUGGESTED FABRIC

To sew this dress, choose dress-weight fabrics with the following properties:

- medium weight, pliable, soft, non-stretch or low-stretch
- the fiber content can include natural fibers (wool, cotton), artificial fibers (viscose), blends (wool + polyester, cotton + viscose, etc.), and synthetics (polyester, elastane)
- the following fabrics are recommended: dress-weight wool, gabardine, modal, suiting fabrics

Attention! We do not recommend stretchy knit fabrics and lightweight sheer fabrics (chiffon, organza, stretch lace).

The dress in the photo is made of suiting fabric. The fabric is medium weight, soft, pliable, and with very little stretch. The fiber content is a blend of wool, viscose, and elastane. The fabric weight is 350 g/m².

The interfacing weight is 30 g/m².

PATTERN PIECES LIST

1. From main fabric:

- front yoke — cut 4
- back yoke — cut 2 on fold
- front bodice — cut 2
- back bodice — cut 1 on fold
- top sleeve — cut 2
- bottom sleeve — cut 2
- front skirt — cut 1 on fold
- back skirt — cut 1 on fold
- front neck facing — cut 1 on fold
- sleeve vent facing — cut 2
- belt — cut 1
- belt loop — cut 1

***IMPORTANT!** Don't forget to transfer all pattern markings and notches onto the fabric.*

2. From interfacing:

- belt — cut 1
- front neck facing — cut 1 on fold

Additionally, cut the following pieces from interfacing:

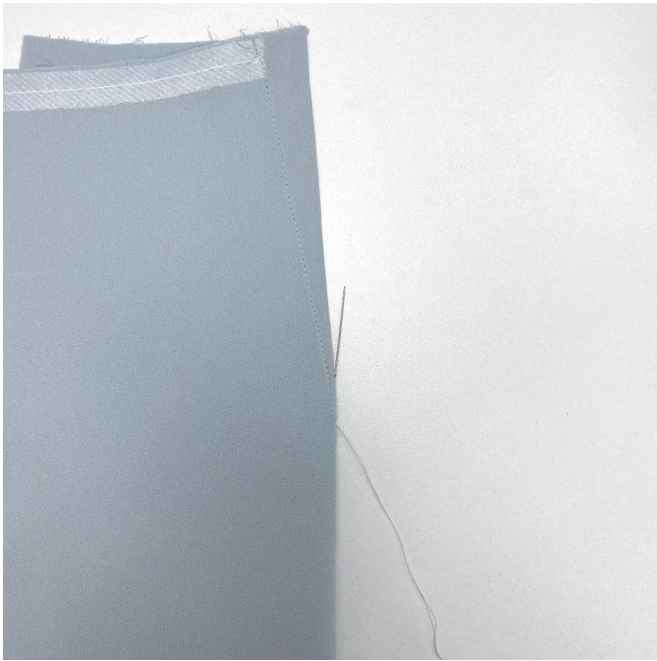
- two interfacing strips, 2 cm (3/4") wide, to interface the zipper seam allowances. The interfacing strips should be cut on the straight grain (parallel to the selvedge)
- two interfacing strips, 4 cm (1 5/8") wide, to interface the sleeve hem allowances. Measure the needed length on the pattern pieces. The interfacing strips should be cut on the cross grain (perpendicular to the selvedge)
- two interfacing strips to interface the sleeve vent allowances. The size of the strips is indicated on the top sleeve pattern piece. The grainline direction on the interfacing strip should be the same as on the sleeve vent allowance

SEAM ALLOWANCES

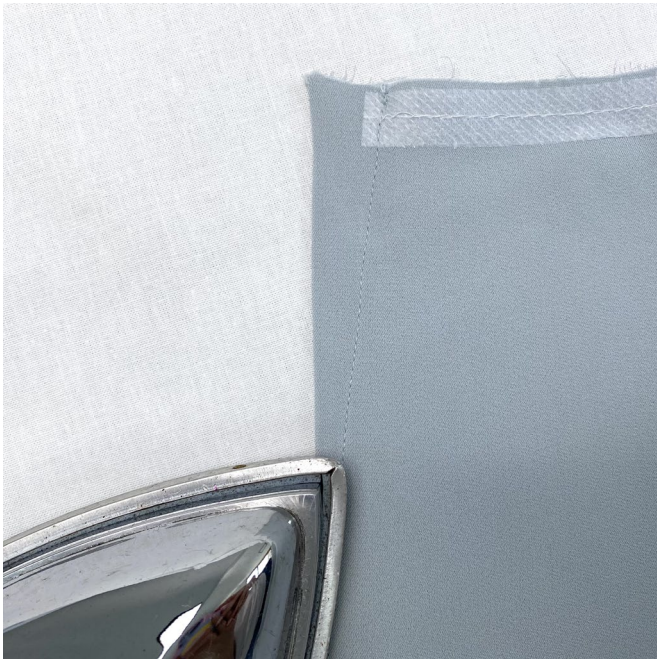
All pattern pieces include seam allowances as follows:

- garment hem allowance — 2 cm (3/4")
- sleeve hem allowance — 3 cm (1 1/8")
- side seam allowance — 1.5 cm (5/8")
- all other edges — 1 cm (3/8")

Take this into account when laying out pattern pieces on the fabric.



Tie the thread tails at the dart point into a knot and hide them inside the dart bulk using a needle.



Press the darts flat.



Press the darts towards the center front and center back, respectively.

Press and steam the darts, shrink out the fullness at the dart points on a tailor's ham.