

FROM THE FOUNDER OF THE #VIKISEWS BRAND



Back in 2016, when I was working on my first set of sewing instructions, I was trying to write them in such a way that even a complete beginner could easily understand and use them to create their very first garment. These instructions laid the foundation for the Vikisews brand, its vision and its mission. I wanted to create modern patterns with the utmost detailed and clear instructions.

Now, with each new collection we are constantly improving our instructions, amending them and adding more relevant details. By the time the final product reaches you, our drafters, correctors, and editors would have spent weeks perfecting every word and every photograph. If you compile a few of our instructions together, you will get a sewing manual that will assist you in sewing all kinds of garments at any difficulty level.

And I would be very happy if these instructions helped you to turn your hobby into a lifelong passion... Enjoy the process! Create your ultimate dream wardrobe! Wear your garments proudly for years to come!

If you have any questions, please contact us at info@vikisews.com — we are always there to help.



REGGIE PATTERN DESCRIPTION

Reggie is a puffer coat with a loose fit and a straight cut. It features a grown-on hood and welt pockets. The front bust darts are transferred to the shoulder seam. The shoulder line is extended. The two-piece sleeves are long and loose-fitting. The coat is double-breasted and closes with sew-on snaps. The detachable tie belt is secured with belt loops at the side seams. The coat is fully lined and is above-ankle length.



IMPORTANT!

The contents of this pattern are copyright protected and belong exclusively to Vikisews. You may use Vikisews patterns for personal use. It is prohibited to share Vikisews patterns and instructions with third parties, as well as to publish patterns and instructions online for public access. **Non-compliance with the mentioned rules is a violation of the US copyright law and may result in civil liability and criminal prosecution.**

You may use Vikisews patterns for commercial use, to sew custom-made garments and/or create fashion collections, on the condition that the patterns are solely used in a manufacturing setting and are not further shared with individuals.

TOTAL EASE ALLOWANCE

	Bust ease	Waistline ease	Hipline ease	Upper arm ease
cm	37	56.7	30.2	15–18.4
inches	14 5/8	22 3/8	11 7/8	5 7/8–7 1/4

GARMENT LENGTH, SLEEVE LENGTH

Height, cm	Back length, cm	Sleeve length including shoulder width, cm
1 (154–160)	120	74.2–77.8
2 (162–168)	123	76.2–79.7
3 (170–176)	126	78.1–81.6
4 (178–184)	129	80.1–83.6

Height, ft	Back length, in	Sleeve length including shoulder width, in
1 (5'1"–5'3")	47 1/4	29 1/4–30 5/8
2 (5'4"–5'6")	48 3/8	30–31 3/8
3 (5'7"–5'9")	49 5/8	30 3/4–32 1/8
4 (5'10"–6'1")	50 3/4	31 1/2–32 7/8

SUGGESTED FABRIC

To sew this coat, choose outerwear fabrics with the following properties:

- medium-weight, pliable, breathable, soft, non-stretch, water-repellent, windproof
- the fiber content can include natural fibers (cotton), artificial fibers (viscose), blends (cotton + viscose, etc.), and synthetics (polyester, polyamide)
- the following fabrics are recommended: blended raincoat fabrics, outerwear fabrics, dewspo.

For the insulation layer, choose 100 g/m2 materials: alpolux, isosoft, thinsulate, holofiber, polyester batting, or use pre-quilted fabrics.

Attention! We do not recommend stretchy knit materials or heavyweight (denim) fabrics.

For the lining, choose lining fabrics made of artificial fibers (viscose), blends (viscose + elastane, viscose + polyester), or synthetics (polyester, polyester + elastane).

The coat in the photos is made of outerwear fabric with an added insulation layer. The fabric is medium-weight, pliable, soft, non-stretch, water-repellent. The fiber content is 100% polyester. The insulation material is alpolux 100 g/m2 and is a blend of 15% wool and 85% microfiber. The lining is 100% viscose.

TOOLS AND EQUIPMENT

- sewing machine for construction
- edgestitch foot for the sewing machine (optional)
- loop turner.

PATTERN PIECES LIST

1. From main fabric:

- front – cut 2
- back – cut 2
- top sleeve – cut 2
- bottom sleeve – cut 2
- front facing – cut 2
- back neck facing – cut 1 on fold
- tie belt – cut 1
- welt – cut 2
- top pocket facing – cut 2
- bottom pocket facing – cut 2
- belt loops – cut 1 (2 pcs).

Additionally, cut the following pieces from the main fabric:

- 2 strips to finish the pockets on the front piece (measure the area marked on the pattern to find the necessary size)
- 4 squares, 3×3 cm (1 1/8×1 1/8"), to reinforce the corners of the hood-to-neckline seam on the front and front facing.

2. From lining fabric:

- front lining – cut 2
- back lining – cut 2
- top sleeve lining – cut 2
- bottom sleeve lining – cut 2
- pocket lining – cut 4.

***IMPORTANT!** Don't forget to transfer all pattern markings and notches onto the fabric.*

3. From insulation 100 g/m2:

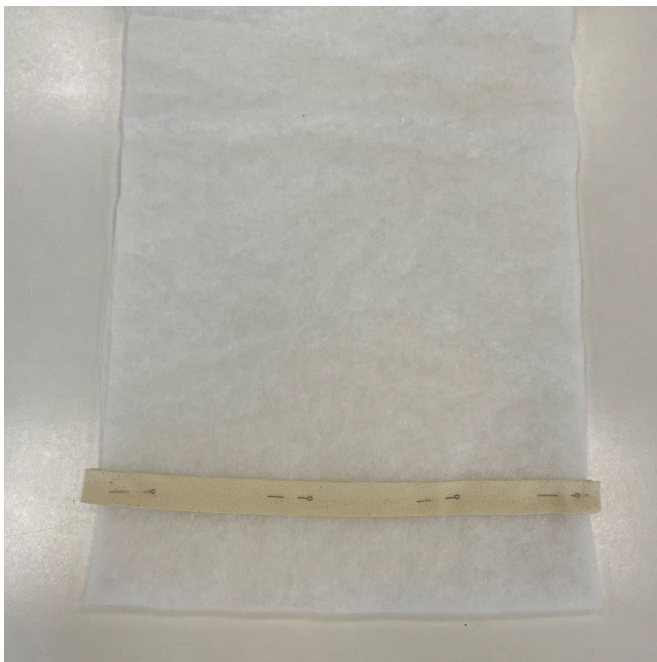
- front – cut 2
- back – cut 2
- top sleeve – cut 2
- bottom sleeve – cut 2
- front facing – cut 2 (½ thickness)
- back neck facing – cut 1 on fold (½ thickness)
- tie belt – cut 1 (½ thickness)
- welt – cut 2 (½ thickness).

SEAM ALLOWANCES

All pattern pieces include seam allowances as follows:

- hem allowance on the front piece – 4 cm (1 5/8")
- hem allowance on the back piece – 4 cm (1 5/8")
- hem allowance on the top sleeve – 4 cm (1 5/8")
- hem allowance on the bottom sleeve – 4 cm (1 5/8")
- all other edges – 1 cm (3/8").

Take this into account when laying out pattern pieces on the fabric.



Steam-press the twill tape to pre-shrink it.

Pin the twill tape to the bottom of the garment and sleeve insulation pieces so that the top edge of the tape is 8 cm (3 1/8") from the edge.

Important! It's very important to measure the distance between the garment bottom edge and tape edge precisely. This will determine where the hem allowance with the lining will be attached to the tape.



Machine-stitch in the middle of the tape to attach it to the insulation pieces, backstitch at the beginning and end of the seam.



Before doing any hand sewing, make sure needles do not leave visible holes in your fabric. If they do, use a disappearing marking pen to transfer markings to the fabric and test the pen on a scrap first.

When testing our chosen fabric we found out that needles leave holes in it, any marking tools leave permanent marks, and fusible interfacing can be seen from the right side. In this case we recommend that you don't use fusible interfacing and skip marking the main construction lines on the fabric.