

# FROM THE FOUNDER OF THE #VIKISEWS BRAND

---

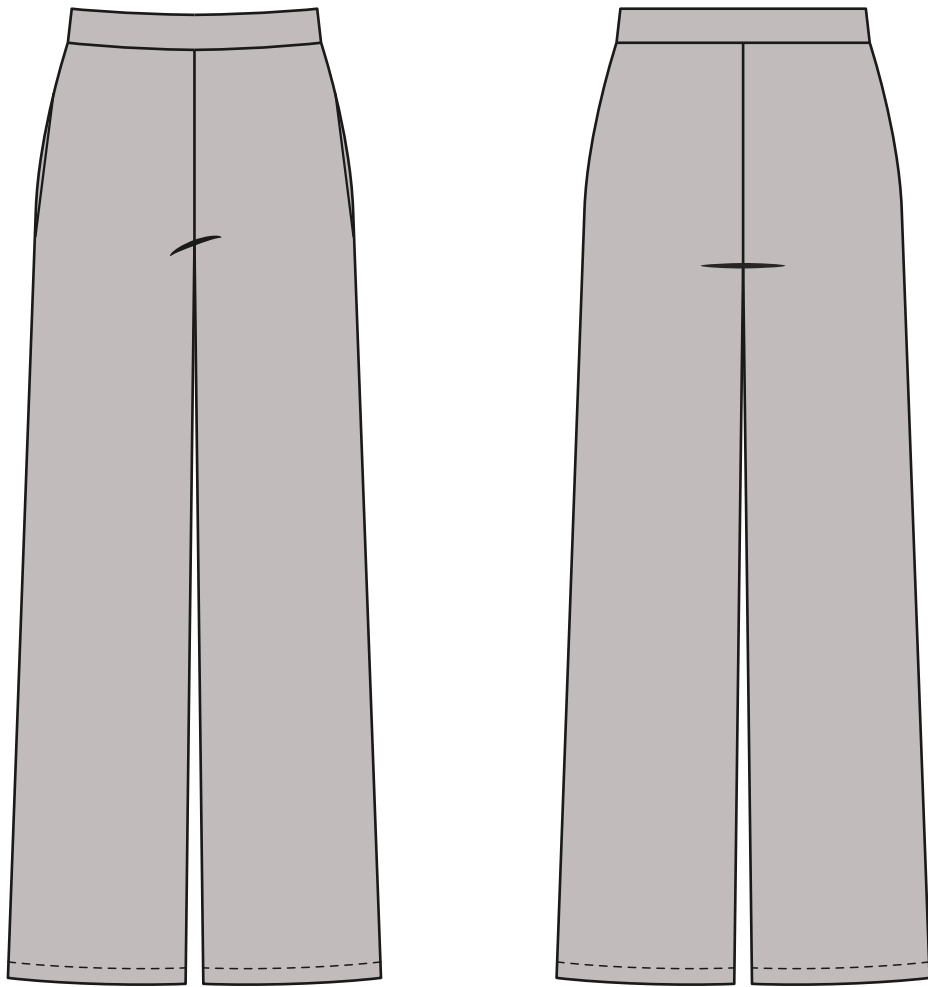


Back in 2016, when I was working on my first set of sewing instructions, I was trying to write them in such a way that even a complete beginner could easily understand and use them to create their very first garment. These instructions laid the foundation for the Vikisews brand, its vision and its mission. I wanted to create modern patterns with the utmost detailed and clear instructions.

Now, with each new collection we are constantly improving our instructions, amending them and adding more relevant details. By the time the final product reaches you, our drafters, correctors, and editors would have spent weeks perfecting every word and every photograph. If you compile a few of our instructions together, you will get a sewing manual that will assist you in sewing all kinds of garments at any difficulty level.

And I would be very happy if these instructions helped you to turn your hobby into a lifelong passion... Enjoy the process! Create your ultimate dream wardrobe! Wear your garments proudly for years to come!

If you have any questions, please contact us at [info@vikisews.com](mailto:info@vikisews.com) - we are always there to help.



## RUTA PATTERN DESCRIPTION

---

Ruta is a pair of drapey, comfy, semi-fitted straight-cut pants featuring pockets in the side seams and an elasticated waistband. The pants are floor length.



## IMPORTANT!

---

The contents of this pattern are copyright protected and belong exclusively to Vikisews. You may use Vikisews patterns for personal use. It is prohibited to share Vikisews patterns and instructions with third parties, as well as to publish patterns and instructions online for public access. **Non-compliance with the mentioned rules is a violation of the US copyright law and may result in civil liability and criminal prosecution.**

You may use Vikisews patterns for commercial use, to sew custom-made garments and/or create fashion collections, on the condition that the patterns are solely used in a manufacturing setting and are not further shared with individuals.

## TOTAL EASE ALLOWANCE

	Waistline ease	Hipline ease
cm	12	5
inches	4 3/4	2

## GARMENT LENGTH

Height, cm	Side seam length including waistband, cm	Height, ft	Side seam length including waistband, in
1 (154–160)	102	1 (5'1"–5'3")	40 1/8
2 (162–168)	105	2 (5'4"–5'6")	41 3/8
3 (170–176)	108	3 (5'7"–5'9")	42 1/2
4 (178–184)	111	4 (5'10"–6'1")	43 3/4

## SUGGESTED FABRIC

To sew these pants, choose sweater knit fabrics with the following properties:

- medium weight, soft, opaque, with good drape, stretchy or low-stretch
- the fiber content can include natural fibers (wool, cotton, silk), blends (wool + polyester, cotton + elastane), artificial fibers (viscose), and synthetics (polyester, polyester + elastane)

For the pocket lining, we recommend light-weight knit fabrics: jersey knits, interlock knits.

The pants in the photo are made of soft sweater knit. The fiber content is wool + polyester. The pocket bag is made of jersey knit. The fiber content is cotton.

# PATTERN PIECES LIST

---

## 1. From main fabric:

- front leg – cut 2
- back leg – cut 2
- waistband – cut 1 on fold

## 2. From lining fabric (for the pocket bag):

- pocket bag – cut 4

## 3. From interfacing:

- pocket opening seam allowances

***IMPORTANT!** Don't forget to transfer all pattern markings and notches onto the fabric.*

Cut 4 strips of interfacing equal in length to the pocket opening and 1.5 cm (3/8") wide. The interfacing strips should be cut on the straight grain.

# SEAM ALLOWANCES

---

All pattern pieces include seam allowances as follows:

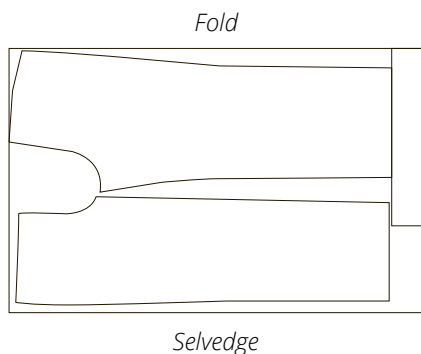
- hem allowance – 3 cm (1 1/8")
- all other edges – 1 cm (3/8")

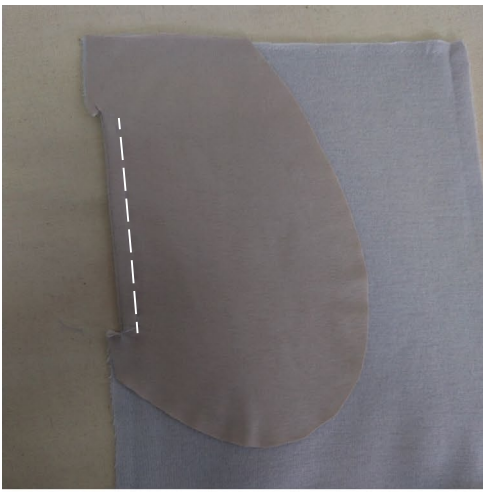
Take this into account when laying out pattern pieces on the fabric.

# CUTTING LAYOUT

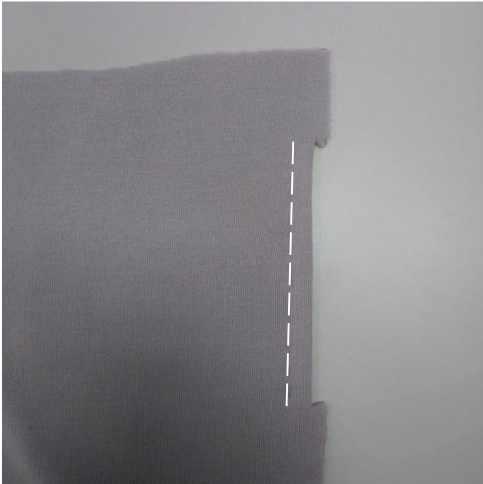
---

Main fabric, 160 cm (63") wide, with a non-directional print/no nap, cut on fold, for sizes XS (32–34) – L (44–46) in all heights

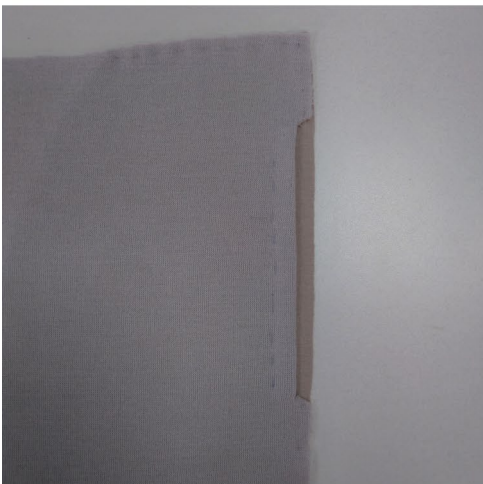




Fold the pocket bag towards the wrong side of the front leg. Hand-baste the pocket opening.



With right sides together, place the second pocket bag piece on top of the one already stitched on. Align the edges, match the notches and hand-baste. Sew both pocket bags together on the overlocker.



Hand-baste the top edge of the assembled pocket bag to the front leg.

This is what the pocket should look like from the right side at this point.