

# FROM THE FOUNDER OF THE #VIKISEWS BRAND

---

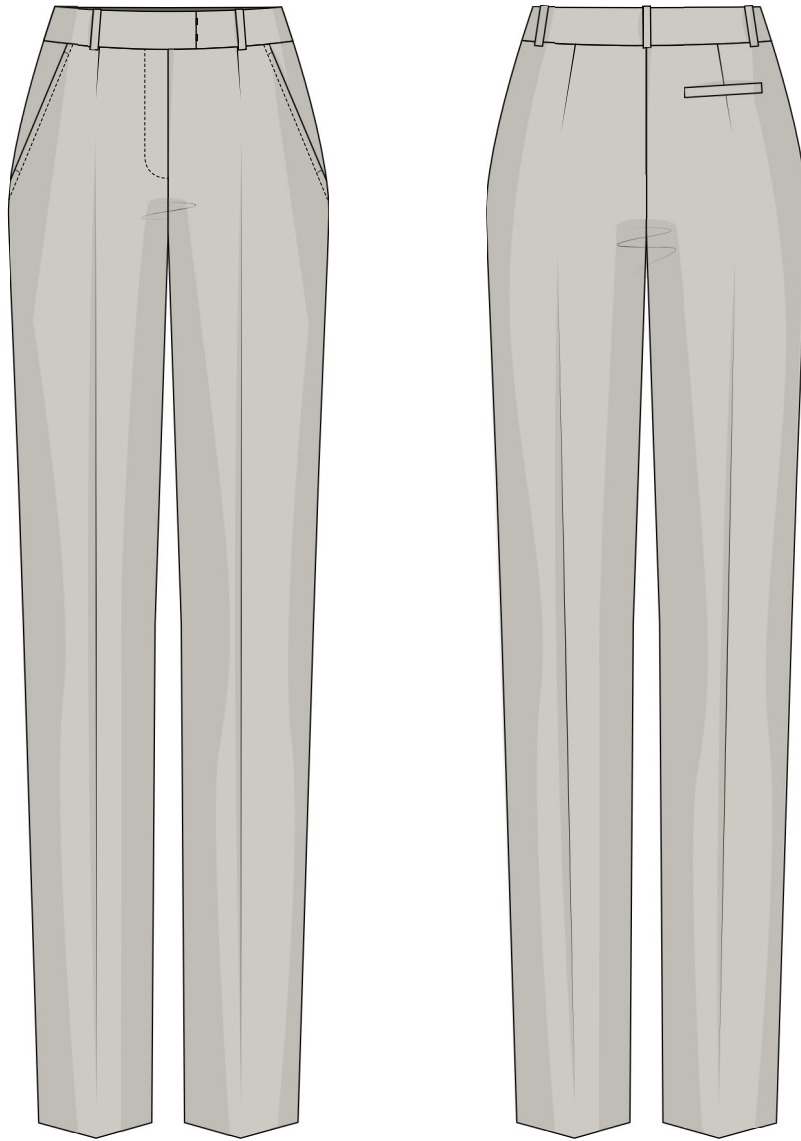


Back in 2016, when I was working on my first set of sewing instructions, I was trying to write them in such a way that even a complete beginner could easily understand and use them to create their very first garment. These instructions laid the foundation for the Vikisews brand, its vision and its mission. I wanted to create modern patterns with the utmost detailed and clear instructions.

Now, with each new collection we are constantly improving our instructions, amending them and adding more relevant details. By the time the final product reaches you, our drafters, correctors, and editors would have spent weeks perfecting every word and every photograph. If you compile a few of our instructions together, you will get a sewing manual that will assist you in sewing all kinds of garments at any difficulty level.

And I would be very happy if these instructions helped you to turn your hobby into a lifelong passion... Enjoy the process! Create your ultimate dream wardrobe! Wear your garments proudly for years to come!

If you have any questions, please contact us at [info@vikisews.com](mailto:info@vikisews.com) — we are always there to help.



## EDNA PATTERN DESCRIPTION

---

Edna is a pair of straight-cut, close-fitting, slightly tapered trousers. The trousers feature pressed creases down the front and back of the legs. There are front slash pockets and a single back welt pocket on the right side. The back pocket closes with an inner button loop. The back is shaped with waist darts. The applied three-piece waistband features an extension at the center front and belt loops. It closes with sew-on hooks and bars and an inner button and buttonhole. The upper edge of the waistband sits below the waist. The trousers have a fly front zipper closure and are partially lined at the front. The garment is ankle-length.



## IMPORTANT!

---

The contents of this pattern are copyright protected and belong exclusively to Vikisews. You may use Vikisews patterns for personal use. It is prohibited to share Vikisews patterns and instructions with third parties, as well as to publish patterns and instructions online for public access. **Non-compliance with the mentioned rules is a violation of the US copyright law and may result in civil liability and criminal prosecution.**

You may use Vikisews patterns for commercial use, to sew custom-made garments and/or create fashion collections, on the condition that the patterns are solely used in a manufacturing setting and are not further shared with individuals.

# TOTAL EASE ALLOWANCE

	Waistline ease (estimated)	Hipline ease
cm	2.8	2.9–3.2
inches	1 1/8	1 1/8–1 1/4

# GARMENT LENGTH

Height, cm	Side seam length including waistband, cm	Height, ft	Side seam length including waistband, in
1 (154–160)	98.7–101.2	1 (5'1"–5'3")	38 7/8–39 7/8
2 (162–168)	102.6–105.1	2 (5'4"–5'6")	40 3/8–41 3/8
3 (170–176)	106.7–109.2	3 (5'7"–5'9")	42–43
4 (178–184)	110.6–113.1	4 (5'10"–6'1")	43 1/2–44 1/2

# FINISHED HEM WIDTH

Sizes	34	36	38	40	42	44	46	48	50	52
Finished hem width, cm	17	17.5	17.9	18.4	18.8	19.3	19.7	20.1	20.6	21
Finished hem width, in	6 3/4	6 7/8	7	7 1/4	7 3/8	7 5/8	7 3/4	7 7/8	8 1/8	8 1/4

# SUGGESTED FABRIC

To sew these trousers, choose suiting fabrics with the following properties:

- medium-weight, pliable, breathable, soft, with a little stretch, opaque
- the fiber content can include natural fibers (wool, cotton), artificial fibers (viscose), blends (wool + polyester, cotton + viscose, etc.), and synthetics (polyester, elastane)
- the following fabrics are recommended: wool suiting, gabardine.

**Attention!** We do not recommend using fabrics without elastane or stretchy knit fabrics.

# TOOLS AND EQUIPMENT

---

- sewing machine for construction
- overlocker for finishing raw edges. It can be replaced with a stretch overlock stitch or a zigzag stitch on the sewing machine (overlock or zigzag stitch width 2–3 mm, stitch length 2.5 mm)
- buttonhole foot for the sewing machine
- edgestitch foot for the sewing machine (optional)
- one-sided zipper foot for the sewing machine
- size 80 sewing machine needles are recommended for suiting fabrics.

## PATTERN PIECES LIST

---

### 1. From main fabric:

- front leg – cut 2
- back leg – cut 2
- left front waistband – cut 2
- right front waistband – cut 2
- back waistband – cut 2
- slash pocket – cut 2
- slash pocket facing – cut 2
- back pocket lining – cut 1
- belt loops – cut 1
- fly extension – cut 1
- fly shield – cut 1
- welt – cut 1
- button loop – cut 1.

### 2. From lining fabric:

- front leg lining – cut 2
- slash pocket lining – cut 2
- back pocket lining – cut 1.

***IMPORTANT!** Don't forget to transfer all pattern markings and notches onto the fabric.*

### 3. From interfacing:

- Left front waistband — cut 2
- Right front waistband — cut 2
- Back waistband — cut 2
- Slash pocket facing — cut 2
- Fly extension — cut 1
- Welt — cut 1

### Additionally cut from interfacing:

- one strip to interface the pocket area on the back leg (measure on the pattern)
  - two strips, 2 cm (3/4") wide, to reinforce the fly seam allowances on the front legs
- The interfacing strips should be cut on the straight grain (parallel to the selvedge).

## SEAM ALLOWANCES

---

All pattern pieces include seam allowances as follows:

- hem allowance – 4 cm (1 5/8")
- back pocket lining edges – 1.5 cm (5/8")
- all other edges – 1 cm (3/8").

Take this into account when laying out pattern pieces on the fabric.



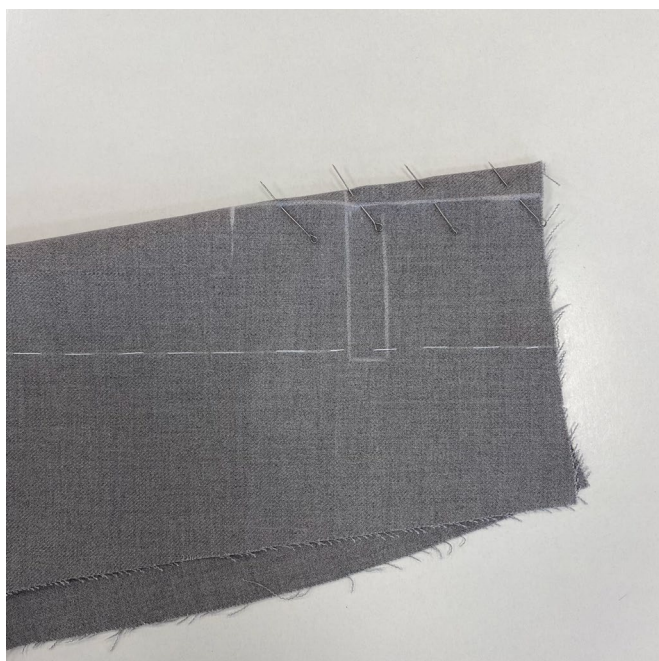


Use chalk to transfer the corresponding center lines from the pattern to the wrong side of the two outer front waistband pieces (right front waistband and left front waistband).

Transfer the pocket opening line from the pattern to the wrong side of the slash pocket piece.

Thread-trace along the marked chalk lines.

Baste with a light-colored thread that won't bleed into the fabric when steam ironed.



Use chalk to mark the pocket placement on the wrong side of the right back leg, mark the darts on both back legs.

Match the dart legs, pin the darts. Machine-stitch along the marked lines, starting at the wide end and moving towards the dart point marking.

Backstitch at the beginning of the seam only. Leave 10 cm (4") long thread tails at the end.



Tie the thread tails into a knot and hide them between the dart layers using a large-eye needle.