

FROM THE FOUNDER OF THE #VIKISEWS BRAND



Back in 2016, when I was working on my first set of sewing instructions, I was trying to write them in such a way that even a complete beginner could easily understand and use them to create their very first garment. These instructions laid the foundation for the Vikisews brand, its vision and its mission. I wanted to create modern patterns with the utmost detailed and clear instructions.

Now, with each new collection we are constantly improving our instructions, amending them and adding more relevant details. By the time the final product reaches you, our drafters, correctors, and editors would have spent weeks perfecting every word and every photograph. If you compile a few of our instructions together, you will get a sewing manual that will assist you in sewing all kinds of garments at any difficulty level.

And I would be very happy if these instructions helped you to turn your hobby into a lifelong passion... Enjoy the process! Create your ultimate dream wardrobe! Wear your garments proudly for years to come!

If you have any questions, please contact us at info@vikisews.com — we are always there to help.



MARED PATTERN DESCRIPTION

Mared is a straight-cut, semi-fitted, fully-lined, double-breasted coat. The front has bust darts transferred to the pocket line, welt pockets with flaps, and a welt chest pocket on the left side. The coat features a side panel and a center back seam ending with a vent. It has a turned-down, notched collar with a collar stand and an extended shoulder line. The shaping of the shoulders is achieved with shoulder pads. The long two-piece sleeves feature a vent in the elbow seam and decorative buttons. The coat fastens with buttons and buttonholes and is completed by a removable belt with a buckle and grommets. The belt is secured at the waist level with belt loops. Mared is above-ankle length and features topstitching along the center front, collar, pocket flaps, and welt edges. The belt is decorated with several rows of topstitching.



IMPORTANT!

The contents of this pattern are copyright protected and belong exclusively to Vikisews. You may use Vikisews patterns for personal use. It is prohibited to share Vikisews patterns and instructions with third parties, as well as to publish patterns and instructions online for public access. **Non-compliance with the mentioned rules is a violation of the US copyright law and may result in civil liability and criminal prosecution.**

You may use Vikisews patterns for commercial use, to sew custom-made garments and/or create fashion collections, on the condition that the patterns are solely used in a manufacturing setting and are not further shared with individuals.

TOTAL EASE ALLOWANCE

	Bust ease	Waistline ease	Hipline ease	Upper arm ease
cm	18.4–23.2	36.6–40.6	12.8–17.6	10.2–12.2
inches	7 1/4–9 1/8	14 3/8–16	5–6 7/8	4–4 3/4

GARMENT LENGTH, SLEEVE LENGTH

Height, cm	Garment length at center back, cm	Sleeve length, cm	Height, ft	Garment length at center back, in	Sleeve length, in
1 (154–160)	121	61.6–63.3	1 (5'1"–5'3")	47 5/8	24 1/4–24 7/8
2 (162–168)	125	63.6–65.2	2 (5'4"–5'6")	49 1/4	25–25 5/8
3 (170–176)	129	65.6–67.1	3 (5'7"–5'9")	50 3/4	25 7/8–26 3/8
4 (178–184)	133	67.6–69	4 (5'10"–6'1")	52 3/8	26 5/8–27 1/8

SUGGESTED FABRIC

To sew this coat choose coating fabrics that are structured, low- or non-stretch. The fiber content may be 100% wool or may include artificial (e.g. viscose) or synthetic fibers (polyester, elastane, acrylic, etc.).

Choose plain-colored or mélange fabrics, with short or medium pile or without pile.

We do not recommend choosing printed fabrics (such as check), since it will significantly increase fabric requirements and will complicate the sewing process due to pattern matching.

We recommend the following fabrics: cashmere, alpaca, wool coating, bouclé, melton wool.

The recommended fabric weight is 350–600 g/m².

The coat in the photo is made of coating wool. The fabric is medium weight, non-stretch, structured, and has a short pile. The fiber content is a blend of wool and polyester.

The coat is reinforced with fusible interfacing.

Attention! We do not recommend fabrics with the following properties:

- very stretchy, lightweight, loosely woven, soft, non-structured.

For the lining, choose lining fabrics made of viscose, viscose + elastane, or viscose + polyester. The lining fabric should be smooth, opaque, pleasant to the touch, non- or low-stretch.

PATTERN PIECES NAMES AND QUANTITY

1. From main fabric:

- front — cut 2
- side — cut 2
- back — cut 2
- undercollar — cut 2
- upper collar — cut 1 on fold
- collar stand — cut 2
- top sleeve — cut 2
- bottom sleeve — cut 2
- back neck facing — cut 1 on fold
- front facing — cut 2
- pocket top flap — cut 2
- welt — cut 2
- pocket facing — cut 2
- chest pocket welt — cut 1
- chest pocket facing — cut 1
- belt — cut 1
- belt loop — cut 1.

2. From lining fabric:

- back lining — cut 2
- front lining — cut 2
- side lining — cut 2
- top sleeve lining — cut 2
- bottom sleeve lining — cut 2
- pocket bottom flap — cut 2
- pocket top lining — cut 2
- pocket bottom lining — cut 2
- chest pocket lining — cut 1.

3. From interfacing, 55 g/m²:

- front — cut 2
- side — cut 2
- back — cut 2
- undercollar — cut 2
- upper collar — cut 1 on fold
- collar stand — cut 2
- back neck facing — cut 1 on fold
- front facing — cut 2
- pocket top flap — cut 2
- welt — cut 2
- pocket facing — cut 2
- chest pocket welt — cut 1
- chest pocket facing — cut 1
- belt loop — cut 1 (to be interfaced if the coat is made of soft, lightweight fabric).

Partially cut the following pieces from interfacing:

- top sleeve (sleeve cap, vent area, bottom part) — cut 2
- bottom sleeve (sleeve cap, vent area, bottom part) — cut 2.

4. From interfacing, 80 g/m²:

- belt — cut 1.

An additional layer of interfacing should be applied to the following pieces:

- back, front, side — see the marking on the pattern pieces.

IMPORTANT! Don't forget to transfer all pattern markings and notches onto the fabric.

Additionally, cut a strip of interfacing for finishing the welt pocket. The strip should be cut on the straight grain.

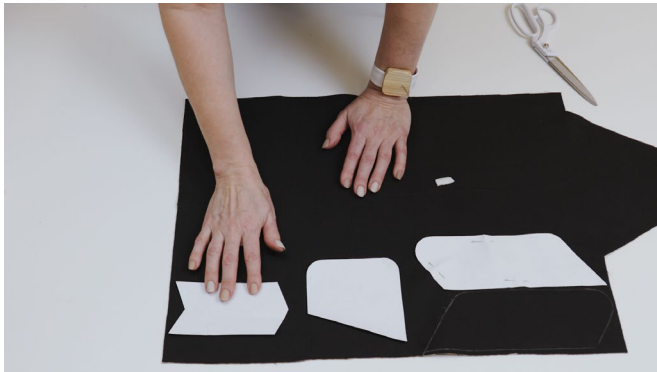
Measure the exact size on the front and side pattern pieces.



Transfer the following lines from the pattern to the wrong side of the front piece:

- center front (use hand stitches)
- pocket placement (use hand stitches)
- dart (use hand stitches)
- chest pocket placement on the left front piece
- lapel roll line (use hand stitches).

Transfer the vent foldline to the wrong side of the back piece (use hand stitches).
Transfer the vent lines to the top and bottom sleeve pieces (use hand stitches).



Cut the pocket top flap, chest pocket welt, and chest pocket facing from an interfaced piece of fabric. Make sure to check the nap and grainline direction. The nap direction on the small pieces should be the same as on the main garment.



Cut four rectangles from leftover fabric: about 5 cm (2") wide and as long as the uncut part of the bust dart plus 2-3 cm (3/4-1 1/8").

