

# FROM THE FOUNDER OF THE #VIKISEWS BRAND

---

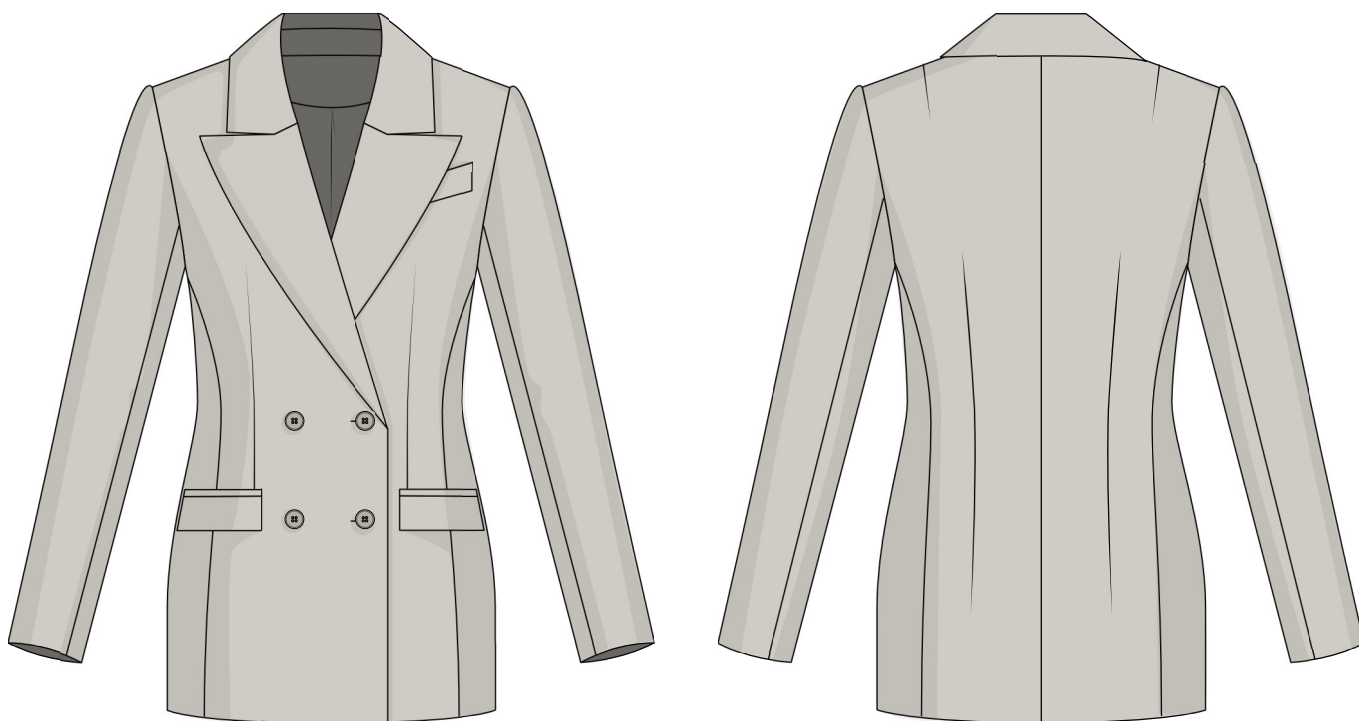


Back in 2016, when I was working on my first set of sewing instructions, I was trying to write them in such a way that even a complete beginner could easily understand and use them to create their very first garment. These instructions laid the foundation for the Vikisews brand, its vision and its mission. I wanted to create modern patterns with the utmost detailed and clear instructions.

Now, with each new collection we are constantly improving our instructions, amending them and adding more relevant details. By the time the final product reaches you, our drafters, correctors, and editors would have spent weeks perfecting every word and every photograph. If you compile a few of our instructions together, you will get a sewing manual that will assist you in sewing all kinds of garments at any difficulty level.

And I would be very happy if these instructions helped you to turn your hobby into a lifelong passion... Enjoy the process! Create your ultimate dream wardrobe! Wear your garments proudly for years to come!

If you have any questions, please contact us at [info@vikisews.com](mailto:info@vikisews.com) — we are always there to help.



## FERNANDA PATTERN DESCRIPTION

---

Fernanda is a semi-fitted lined blazer with an accentuated waist. There are side panels at the front and back. The back of the blazer is shaped with shoulder and waist darts, as well as with a center seam. The shaping at the front is achieved with vertical bust darts that transition into double welt pockets with flaps. There is a welt chest pocket on the left side. The long set-in sleeves are made up of two pieces. The blazer has a turned-down, notched collar with a collar stand. Fernanda has a double-breasted button and buttonhole closure and is below-hip length.



## IMPORTANT!

---

The contents of this pattern are copyright protected and belong exclusively to Vikisews. You may use Vikisews patterns for personal use. It is prohibited to share Vikisews patterns and instructions with third parties, as well as to publish patterns and instructions online for public access. **Non-compliance with the mentioned rules is a violation of the US copyright law and may result in civil liability and criminal prosecution.**

You may use Vikisews patterns for commercial use, to sew custom-made garments and/or create fashion collections, on the condition that the patterns are solely used in a manufacturing setting and are not further shared with individuals.

# TOTAL EASE ALLOWANCE

	Bust ease	Waistline ease	Hipline ease	Upper arm ease
cm	6.8–10.2	11.6–13.9	9.9–11	6–6.1
inches	2 5/8–4	4 5/8–5 1/2	3 7/8–4 3/8	2 3/8

# GARMENT LENGTH, SLEEVE LENGTH

Height, cm	Back length, cm	Sleeve length, cm
1 (154–160)	68.5–70.3	58.8–60.9
2 (162–168)	71.5–73.3	60.7–62.8
3 (170–176)	74.5–76.3	62.8–64.9
4 (178–184)	77.5–79.3	64.7–66.8
Height, ft	Back length, in	Sleeve length, in
1 (5'1"–5'3")	27–27 5/8	23 1/8–24
2 (5'4"–5'6")	28 1/8–28 7/8	23 7/8–24 3/4
3 (5'7"–5'9")	29 3/8–30	24 3/4–25 1/2
4 (5'10"–6'1")	30 1/2–31 1/4	25 1/2–26 1/4

# SUGGESTED FABRIC

To sew this blazer, choose suiting fabrics with the following properties:

- medium-weight, pliable, structured, non-stretch or low-stretch
- the fiber content can include natural fibers (wool), artificial fibers (viscose), blends (wool + silk, wool + polyester, etc.), and synthetics (polyester, polyester + elastane)
- the following fabrics are recommended: wool suiting, gabardine.

**Attention!** We do not recommend stretchy fabrics (knit fabric), lightweight soft fabrics (dress-weight wool), loosely woven suiting fabrics.

For the lining, choose lining fabrics made of artificial fibers (viscose), blends (viscose + elastane, viscose + polyester), or synthetics (polyester, polyester + elastane).

The blazer in the photo is made of wool suiting. The fabric is medium-weight, pliable, soft, structured, and has very little stretch. The fiber content is a blend of polyester, cotton, wool, and spandex.

The lining is 100% viscose.

# TOOLS AND EQUIPMENT

---

- sewing machine for construction
- buttonhole foot for the sewing machine.

## PATTERN PIECES LIST

---

### 1. From main fabric:

- front — cut 2
- side front — cut 2
- back — cut 2
- side back — cut 2
- top sleeve — cut 2
- bottom sleeve — cut 2
- undercollar — cut 1 on fold
- upper collar — cut 1 on fold
- collar stand — cut 2
- back neck facing — cut 1 on fold
- front facing — cut 2
- flap — cut 2
- top pocket welt — cut 2
- bottom pocket welt — cut 2
- pocket facing — cut 2
- chest pocket welt — cut 1
- chest pocket facing — cut 1.

### 2. From lining fabric:

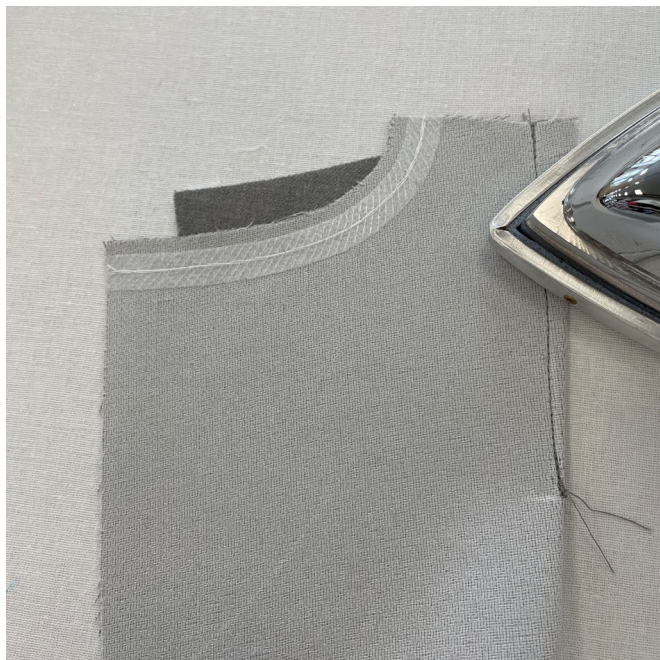
- front lining — cut 2
- back lining — cut 2
- top sleeve lining — cut 2
- bottom sleeve lining — cut 2
- flap lining — cut 2
- pocket bottom lining — cut 2
- pocket top lining — cut 2
- chest pocket bottom lining — cut 1
- chest pocket top lining — cut 1.

### 3. From interfacing:

- front — cut 2
- side front — cut 2
- back — cut 2
- side back — cut 2
- undercollar — cut 1 on fold
- upper collar — cut 1 on fold
- collar stand — cut 2
- back neck facing — cut 1 on fold
- front facing — cut 2
- flap — cut 2
- flap lining — cut 2
- chest pocket welt — cut 1.

**IMPORTANT!** Don't forget to transfer all pattern markings and notches onto the fabric.





Machine-stitch the shoulder darts, backstitching at the edge only.

Machine-stitch the waist darts without backstitching.

At the tip of the dart, tie thread tails into knots and trim them down to 3–4 cm (1 1/8–1 5/8"). The thread tails are not hidden between fabric layers due to fabric weight.

Press the seam flat.



Press the darts towards the center seam.



Press and steam the darts, shrink out the fullness at the dart point on a tailor's ham.